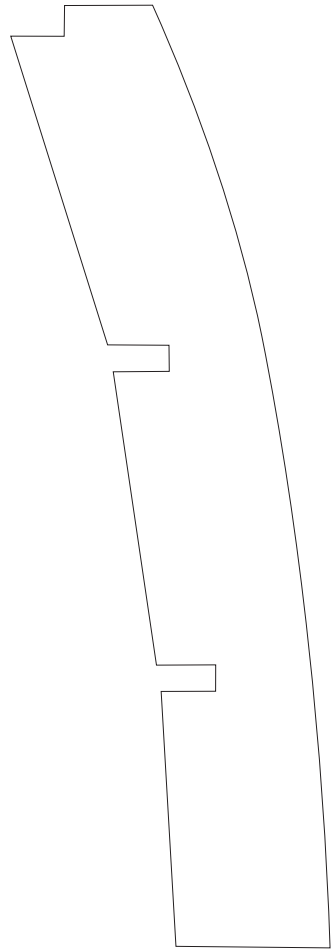
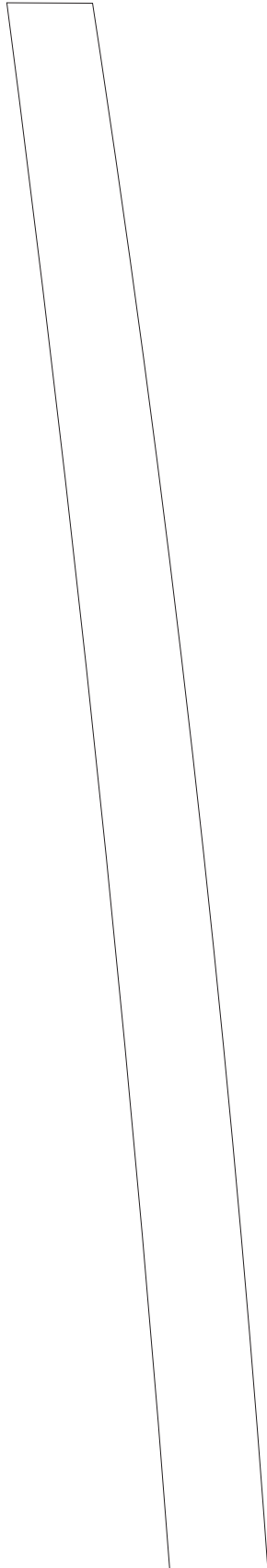
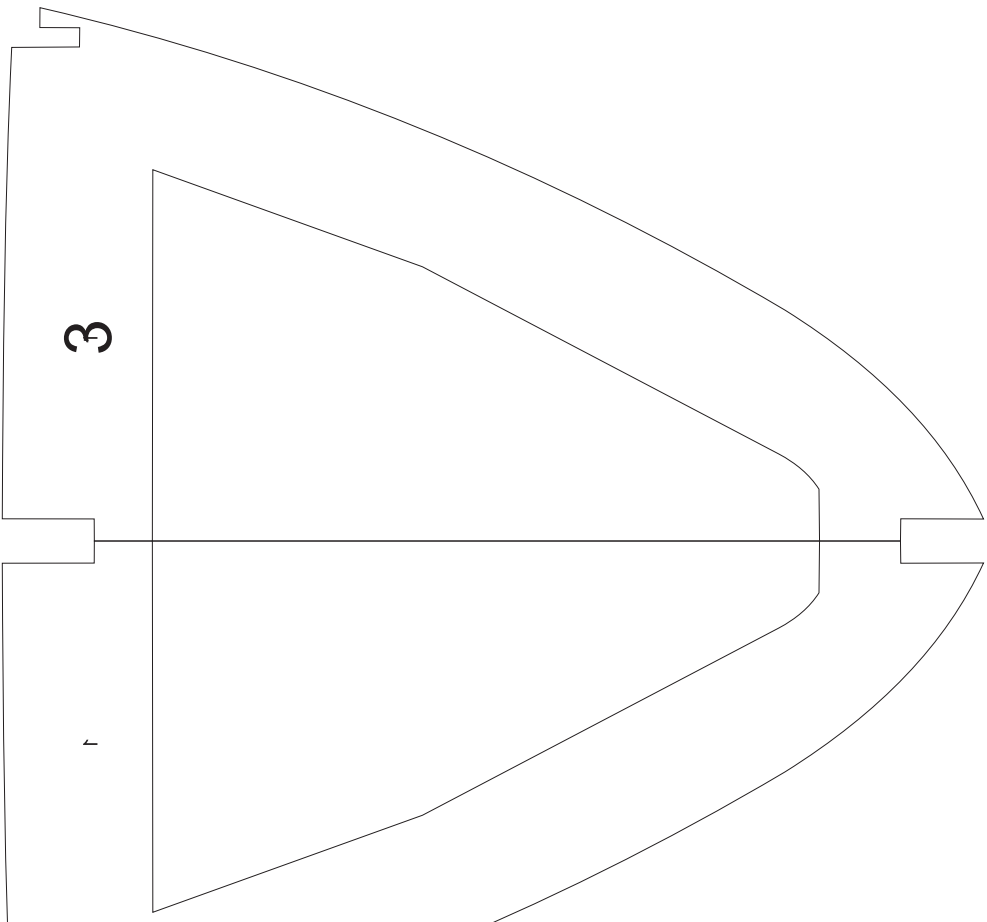
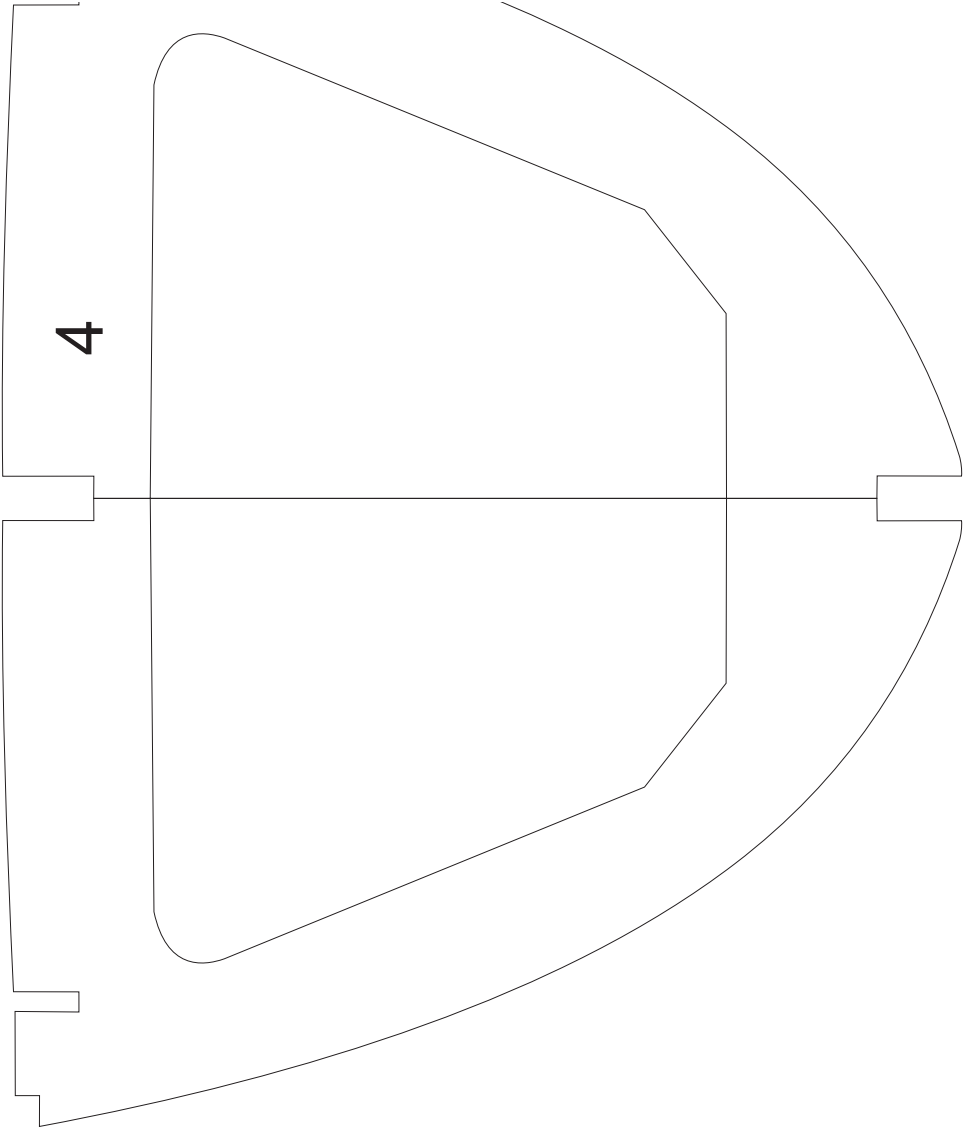
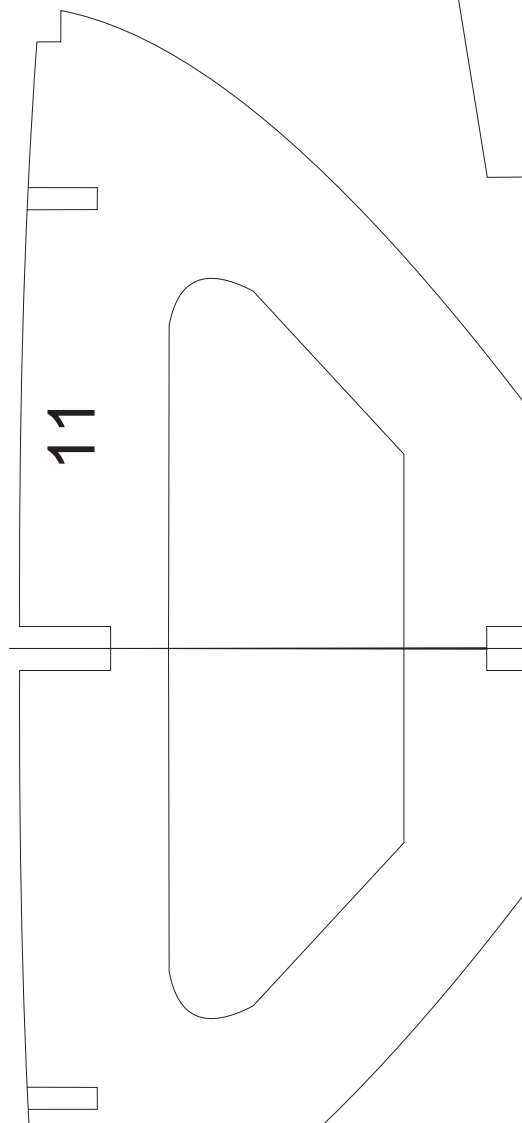
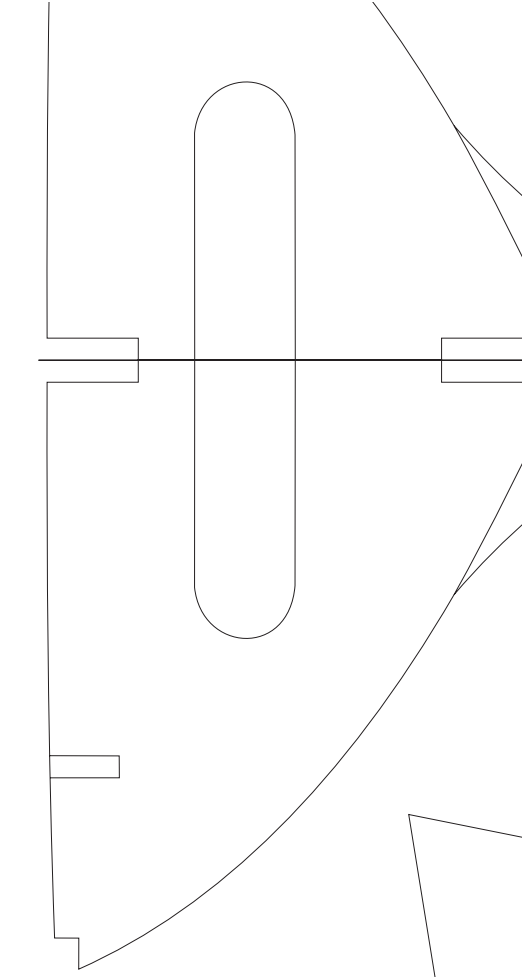
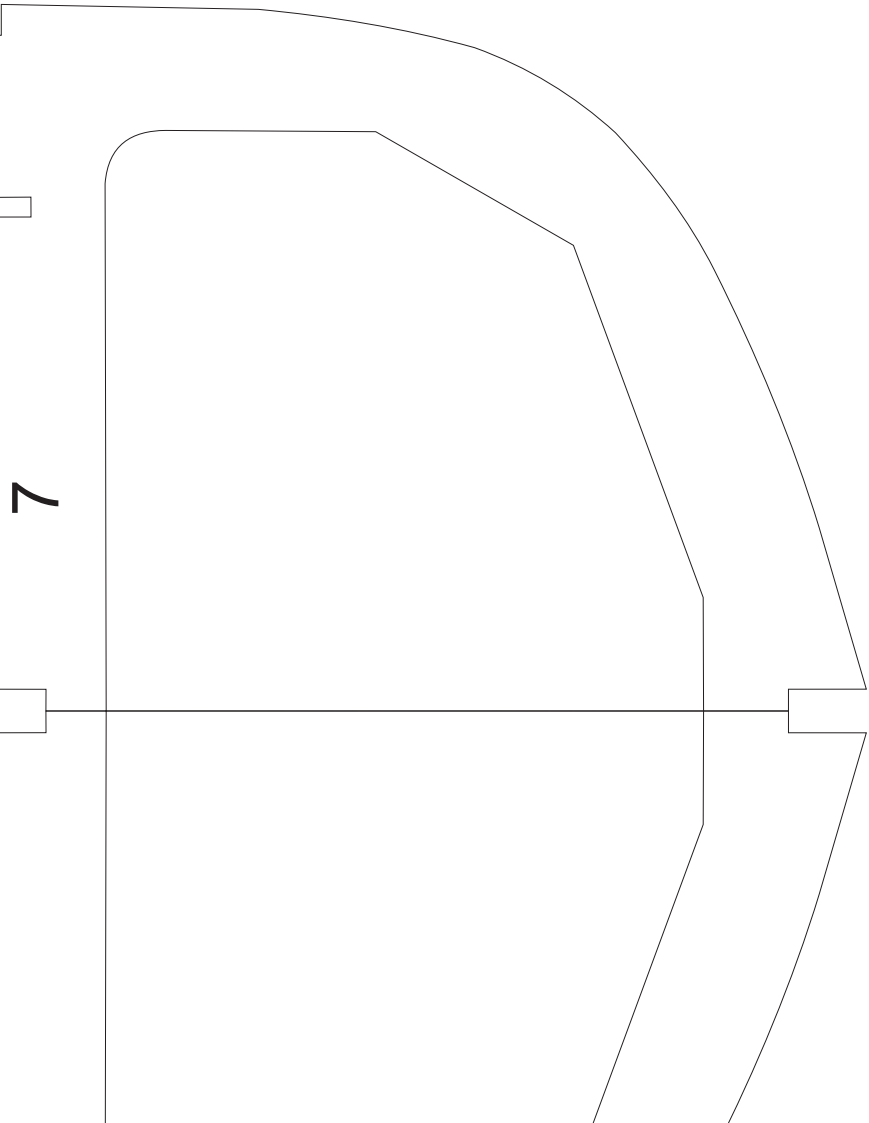
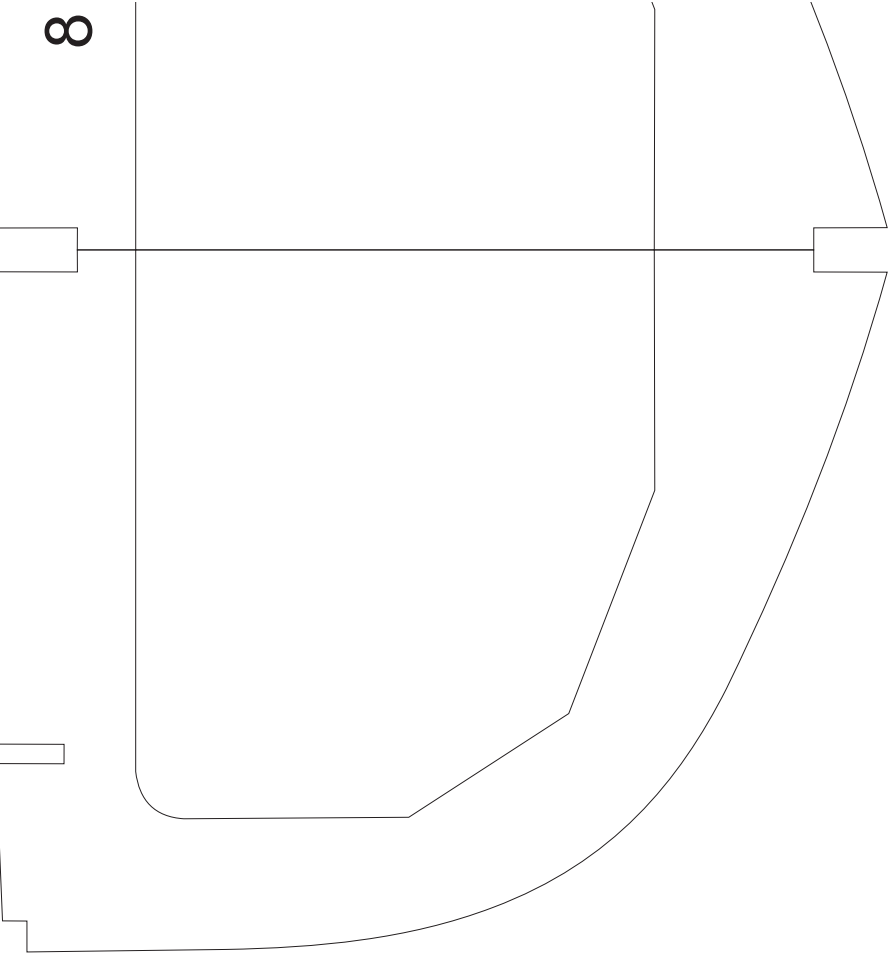
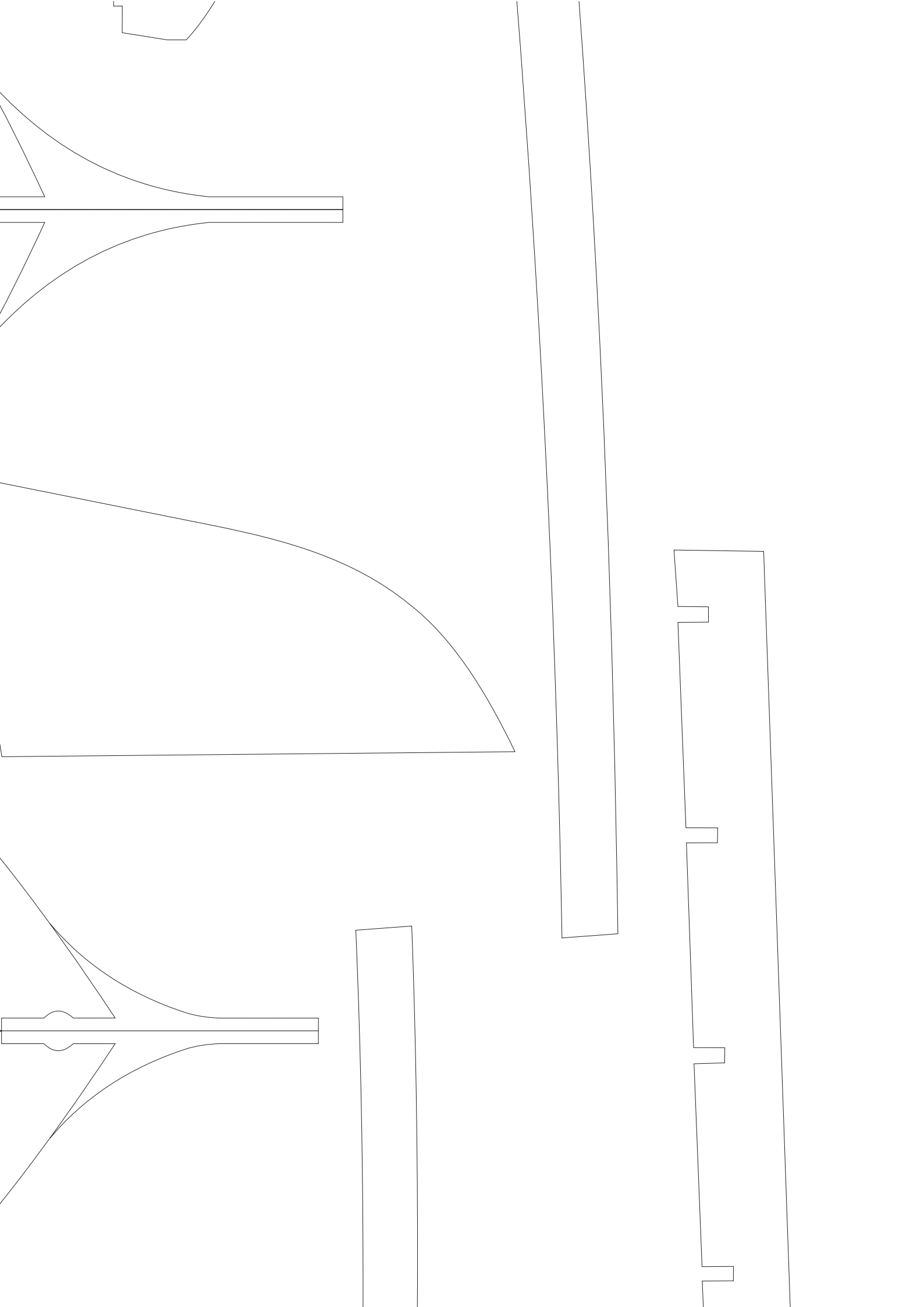


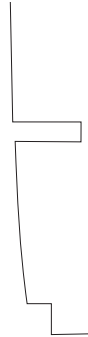
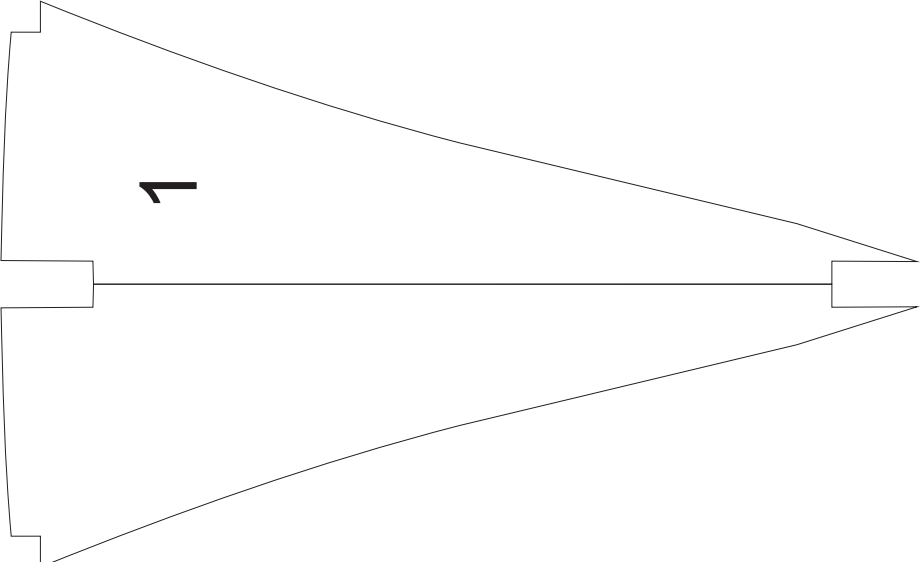
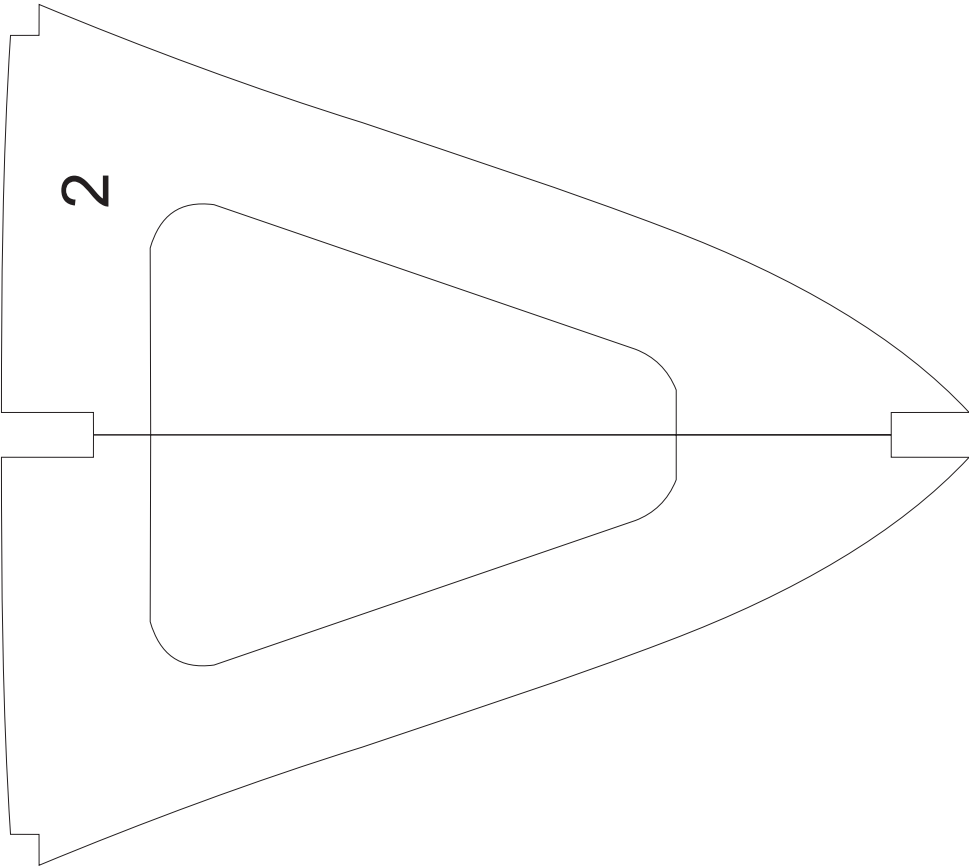
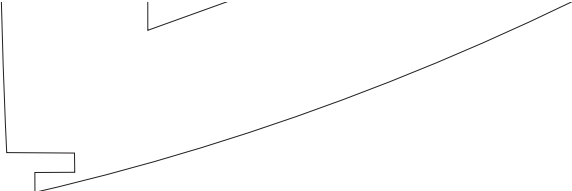
14

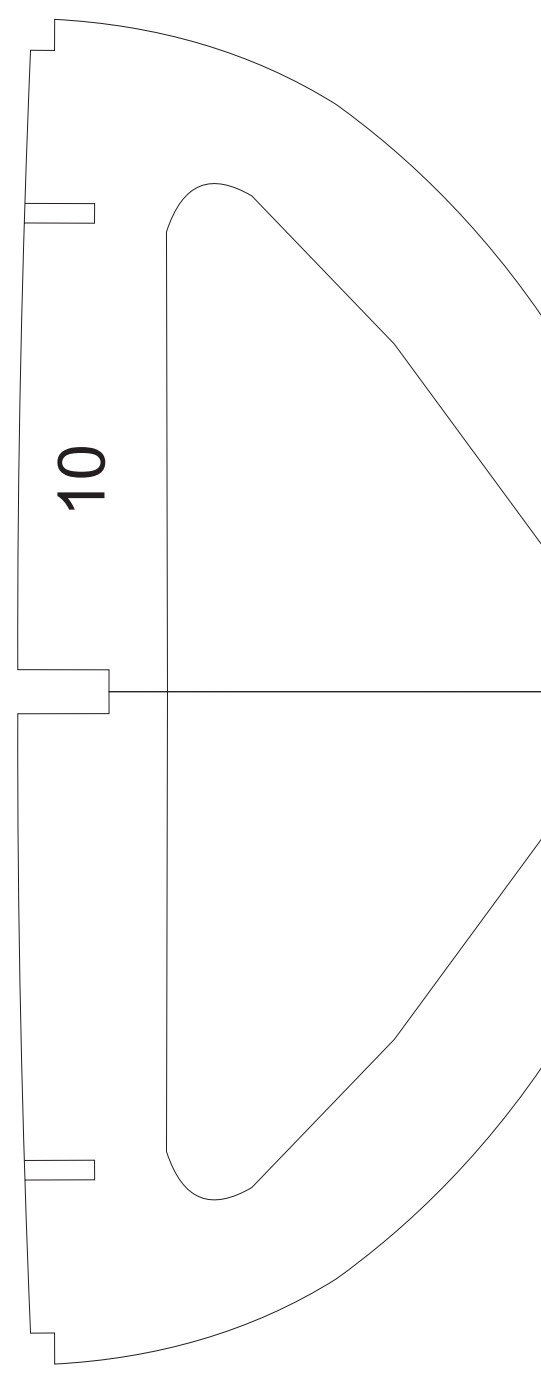
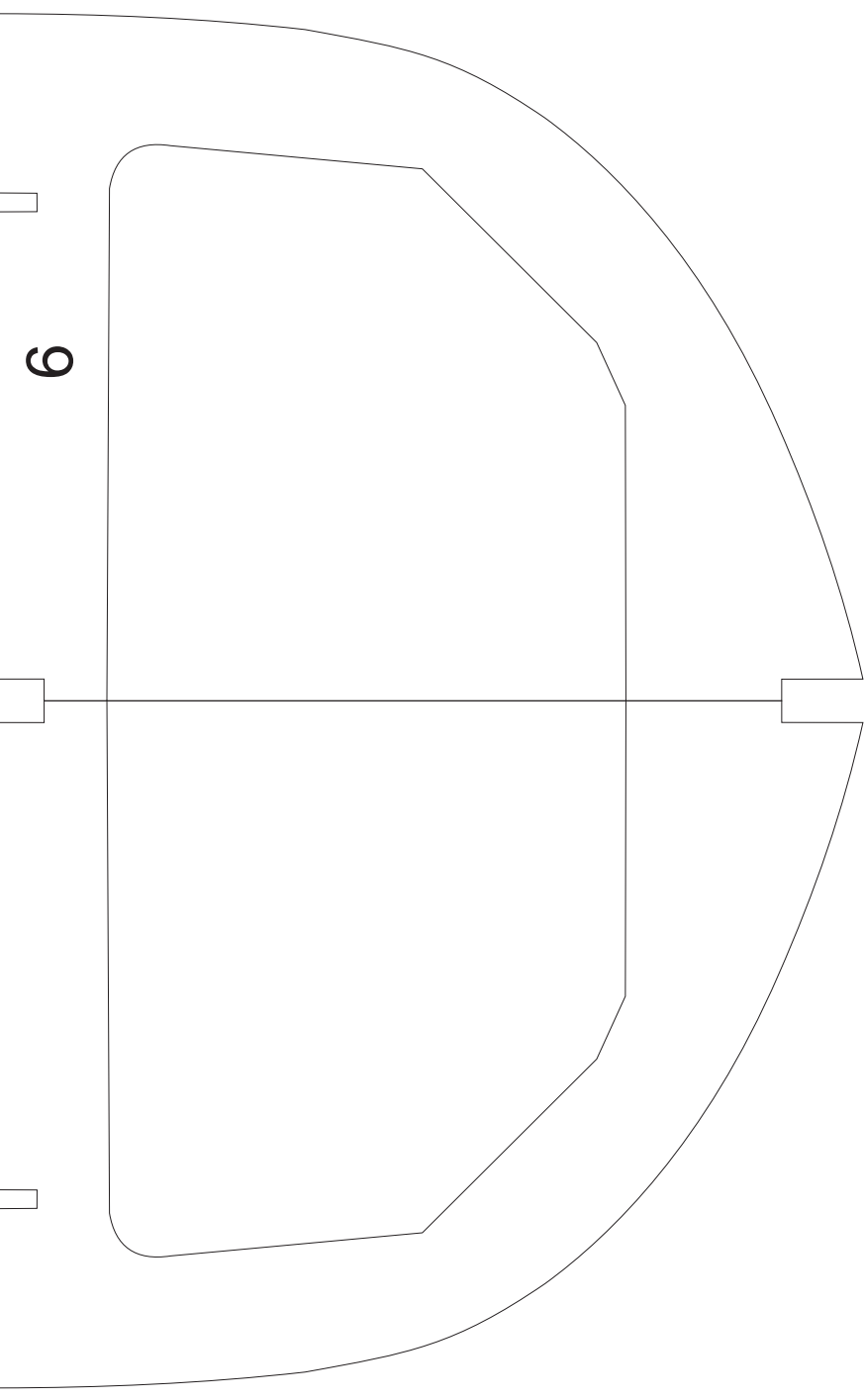
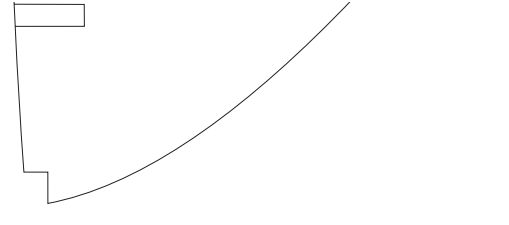
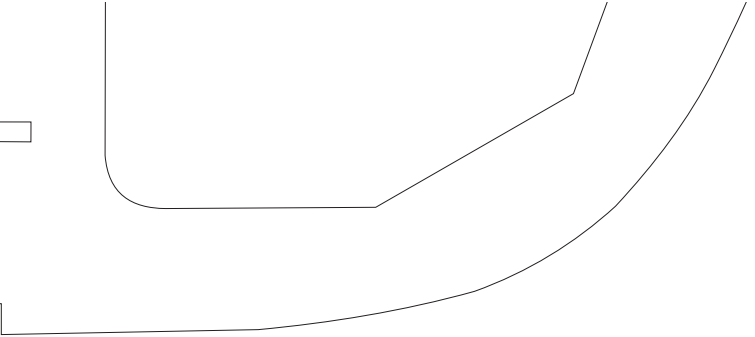




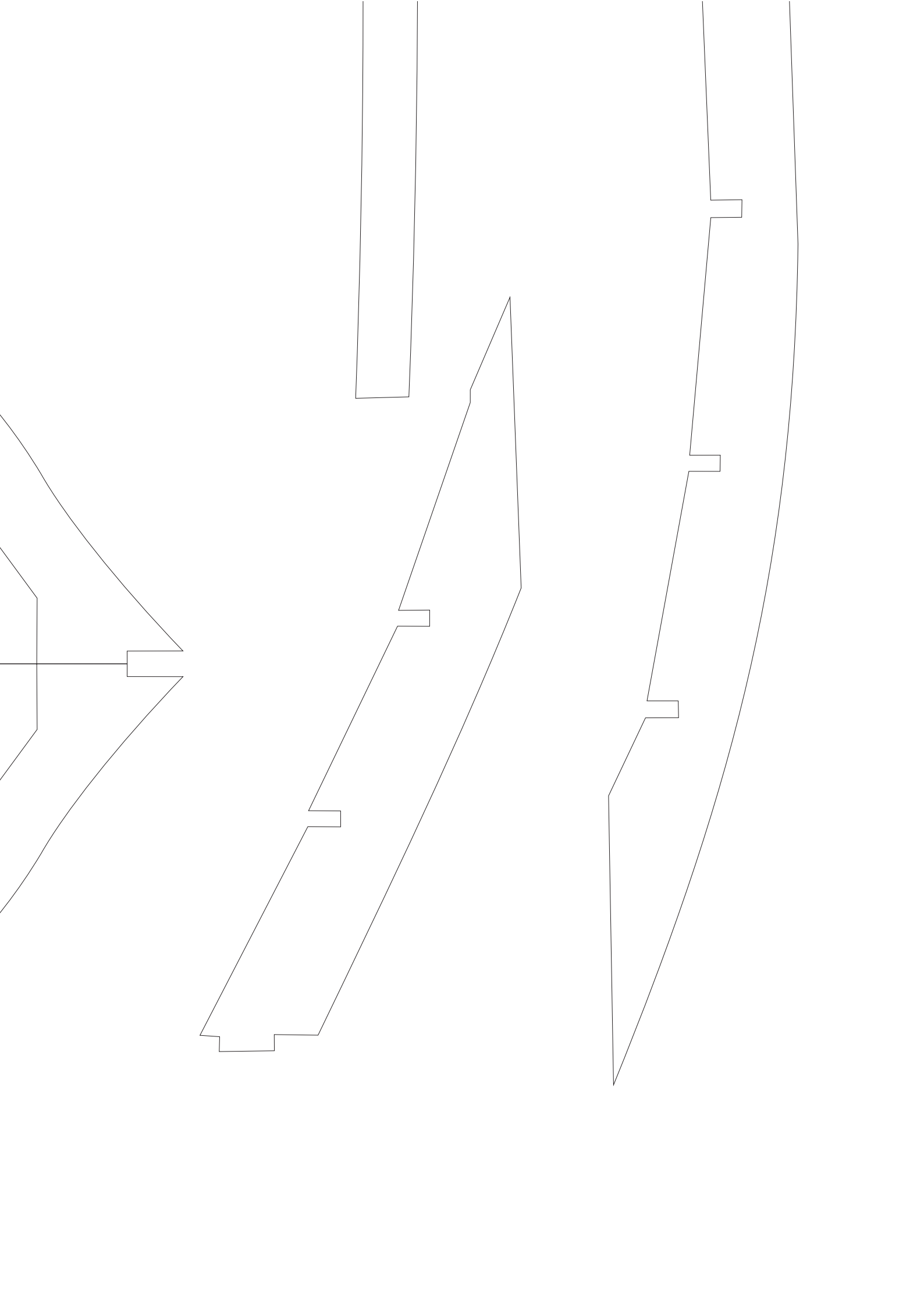




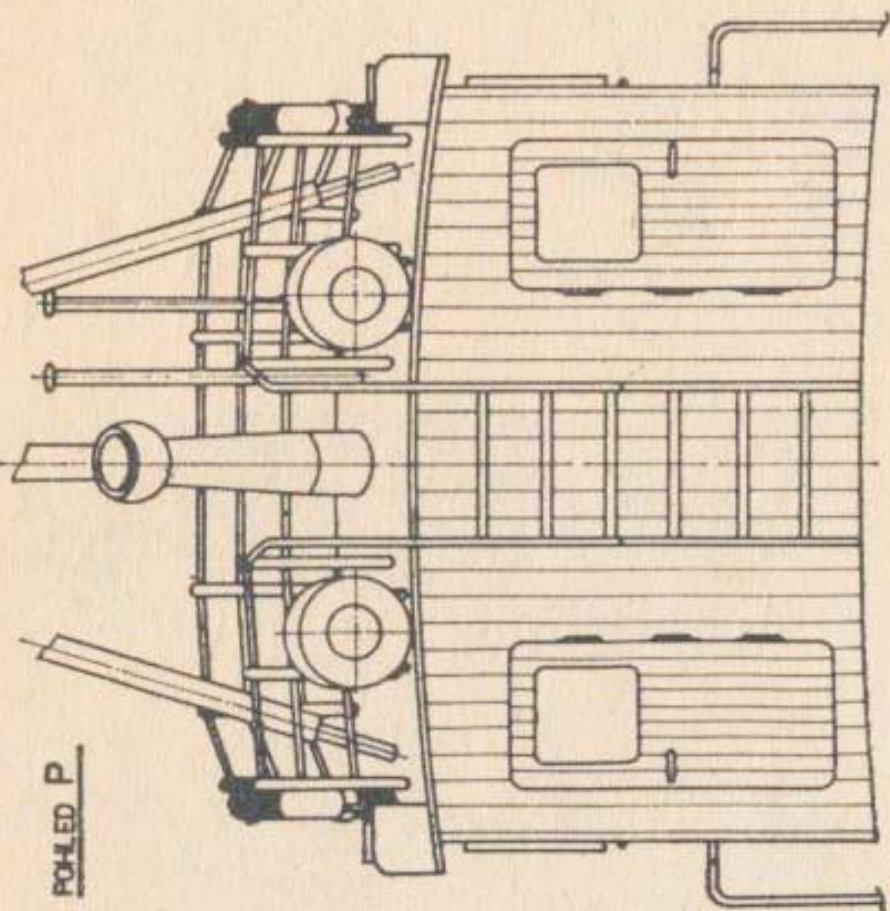




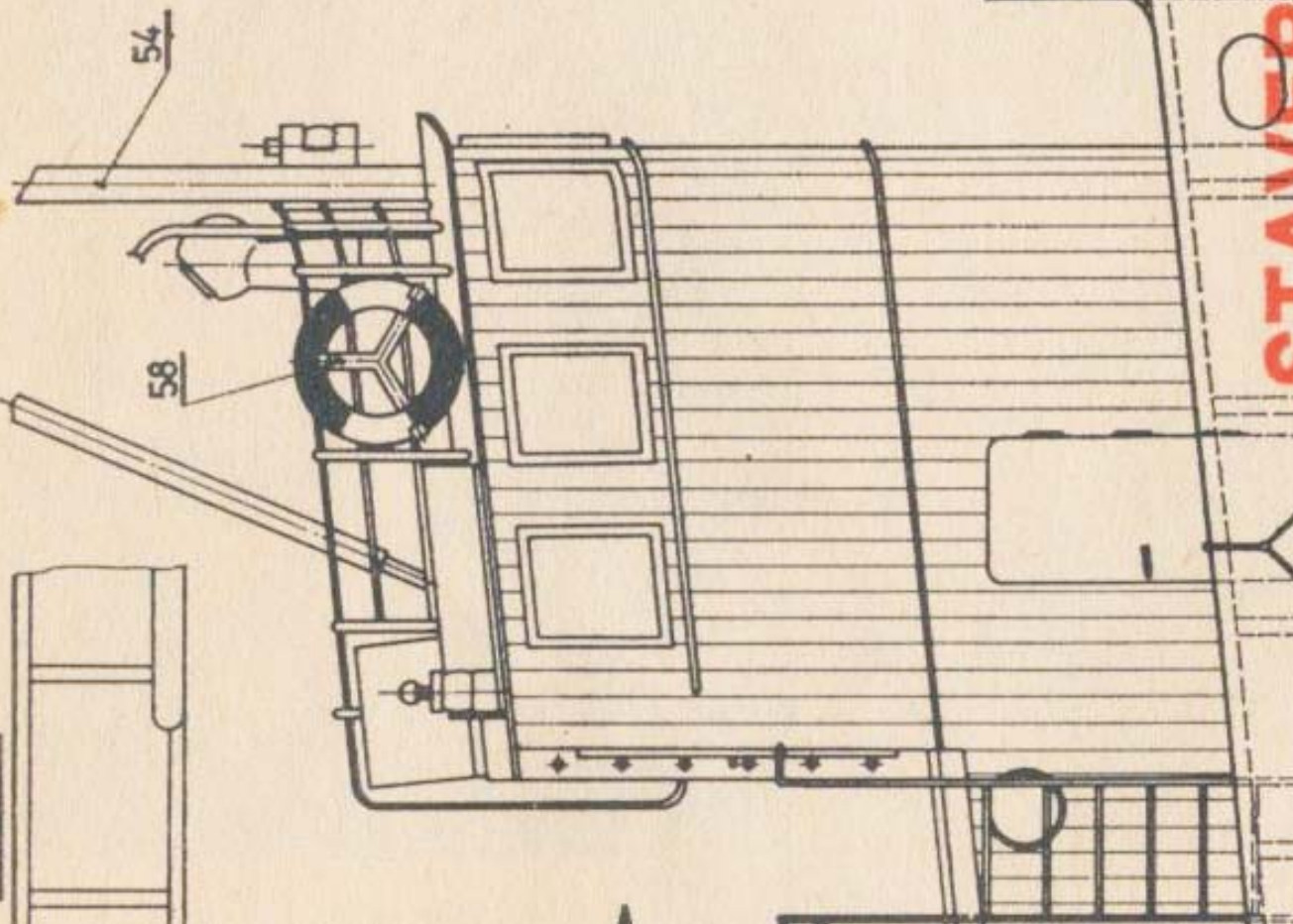




POHLED P



POHLED T



STAVBY AŽ DĚLÁMEK



# STAVEBNÍ PLÁNEK

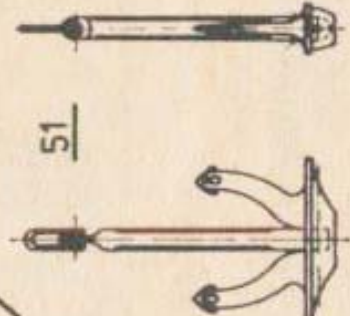
ve skutečné velikosti (tři listy formátu A1) vyjde pod číslem 80 (s) ve speciální řadě MODELÁŘ.

Čena výtisku je 12 Kčs. Plánek PAOLO-M přijde do modelářských prodejen asi ve 2. čtvrtletí 1977, jeho vyjití oznámíme v časopise. Prosíme, abyste nevyžadovali plánek dříve, vydání se tím neurychlí, naopak!

PLAN „PAOLO-M“ Foreign aeromodellers can order the plan (scale 1:1) on editor's address: MODELÁŘ, Jungmannova 24, 110 00 Praha 1, ČSSR

DEN BAUPLAN „PAOLO-M“ in natürlicher Grösse (M 1:1) können die ausländischen Modellbauer in der Redaktion MODE-

55  
53  
51  
52



23

22

21

20

1

19

18

16

2

24

3

44

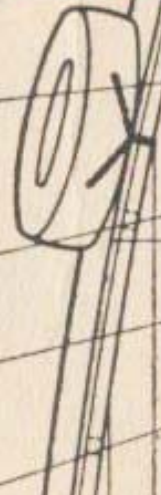
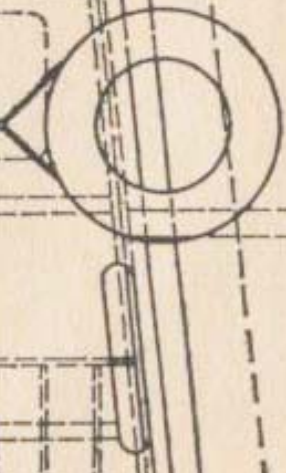
43

4

42

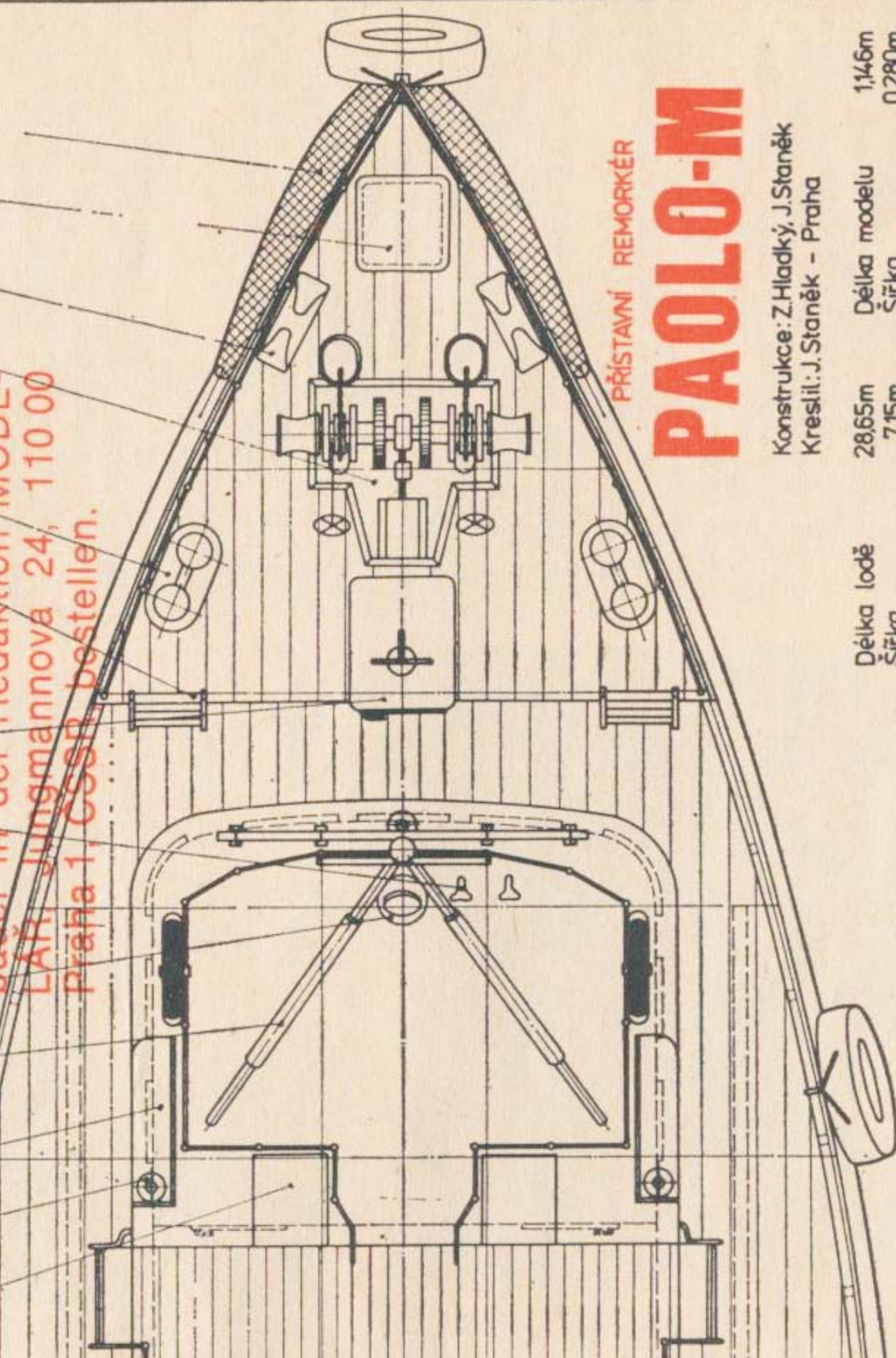
41

49





PAOLO-M  
LAFFI Jungmannova 24, 110 00  
Praha 1, CSSR bestellen.



PŘÍSTAVNÍ REMORKÉR

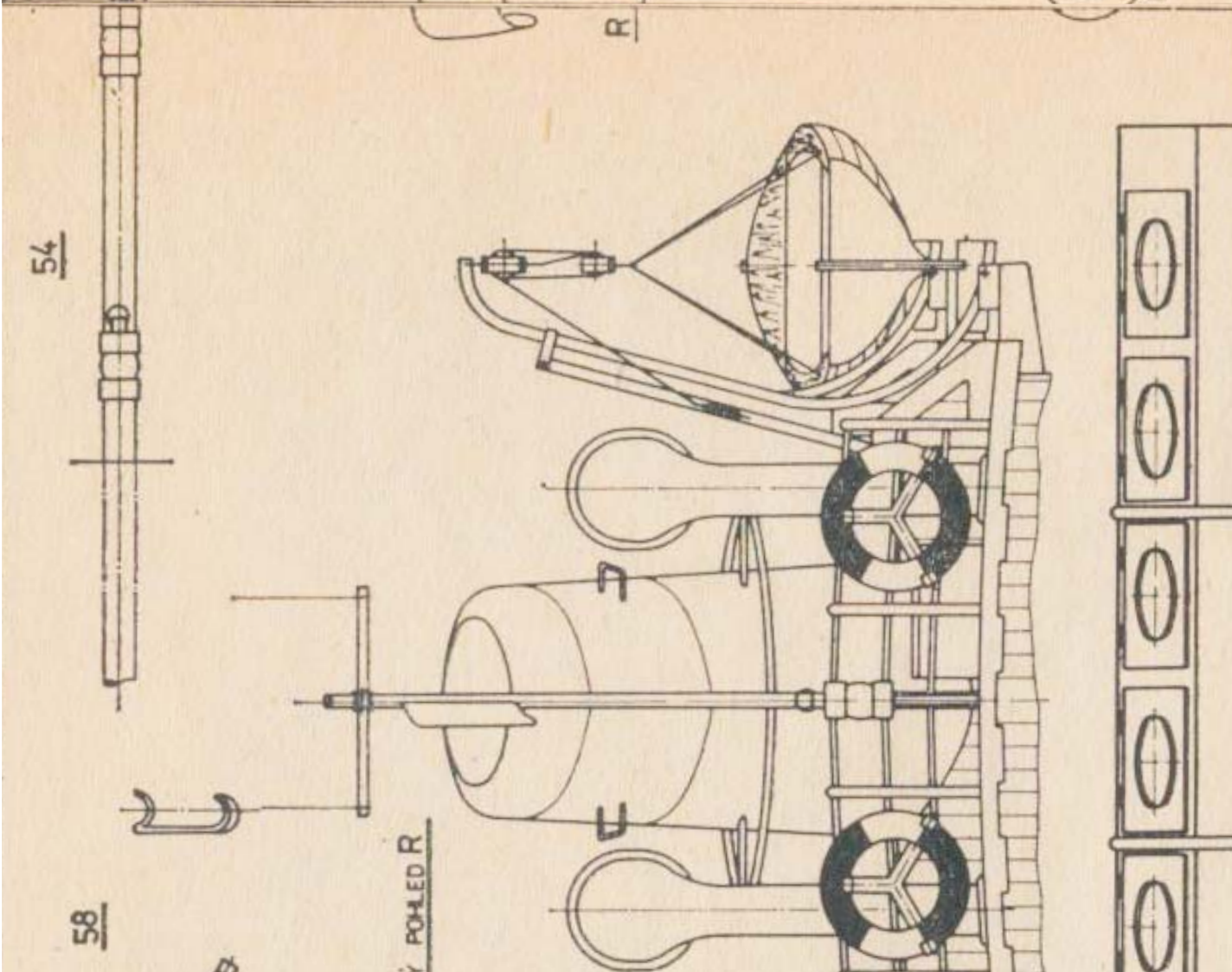
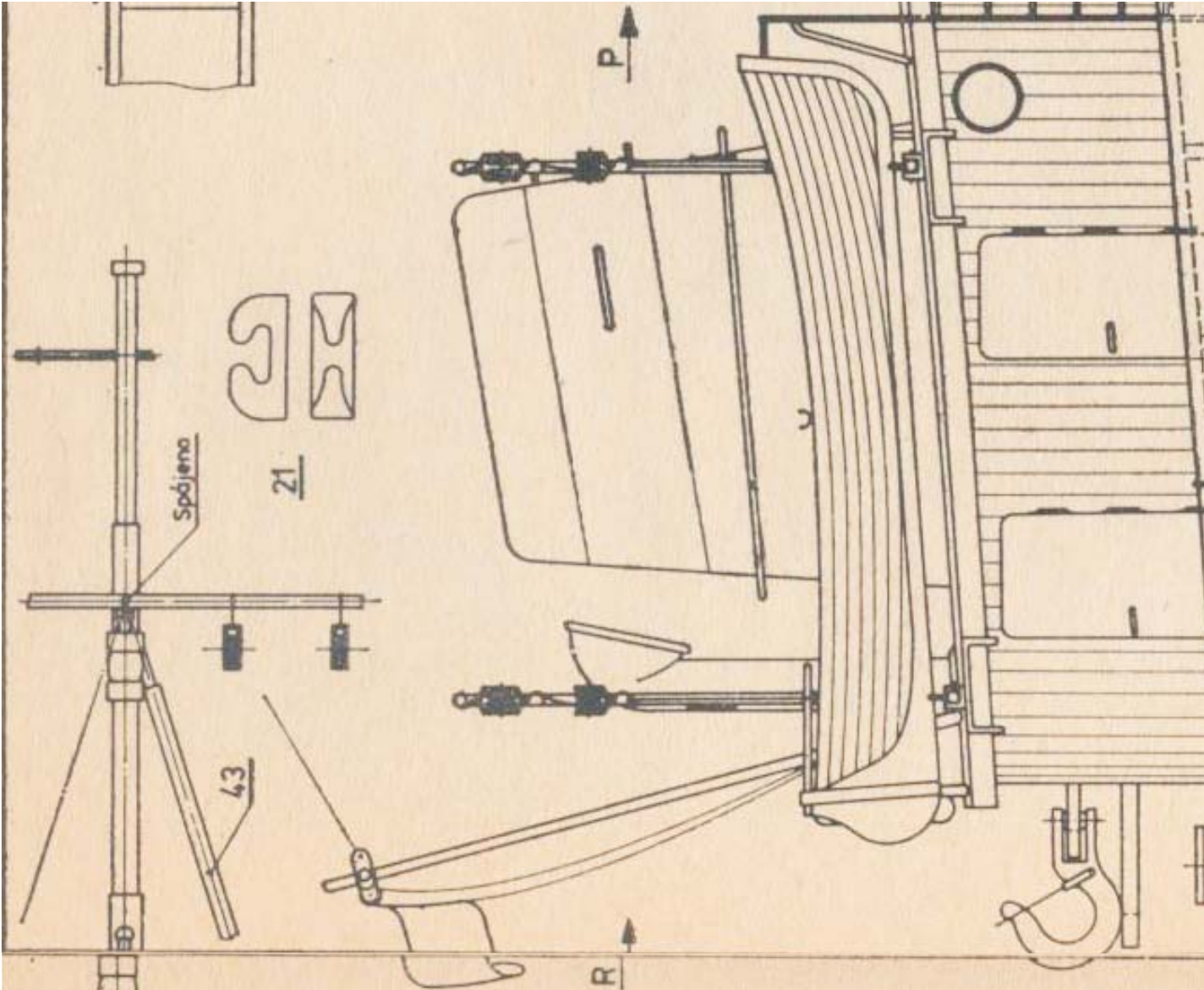
# PAOLO-M

Konstrukce: Z.Hladký, J.Staněk  
Kreslil: J.Staněk - Praha

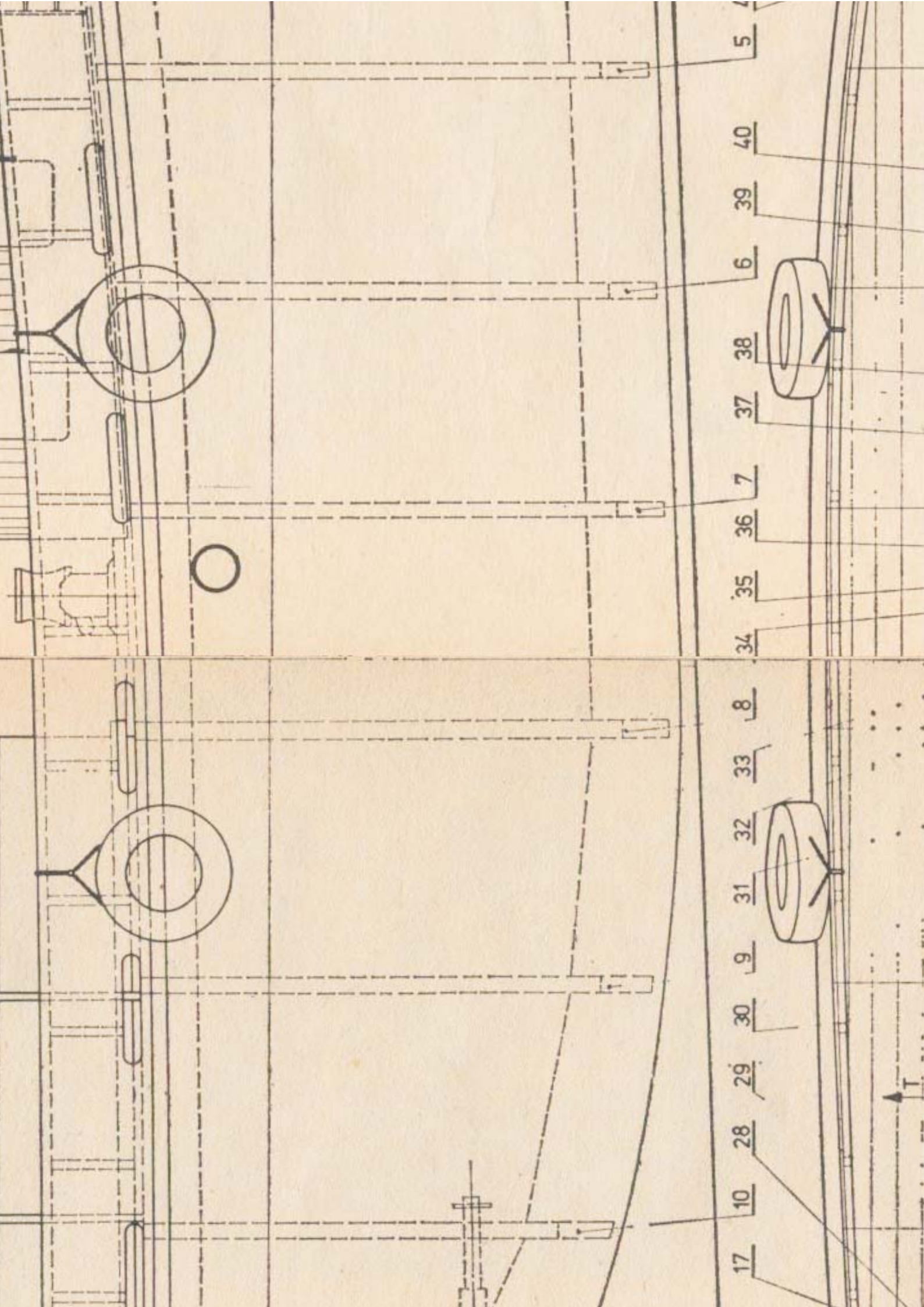
Délka lodě	28,65m	Délka modelu	1,146m
Šířka	7,15m	Šířka	0,280m
Ponor	4,5m	Ponor	0,140m
Měřítko	1:25	Hmotnost	16+20kg

Kresleno na 3 listech JSK

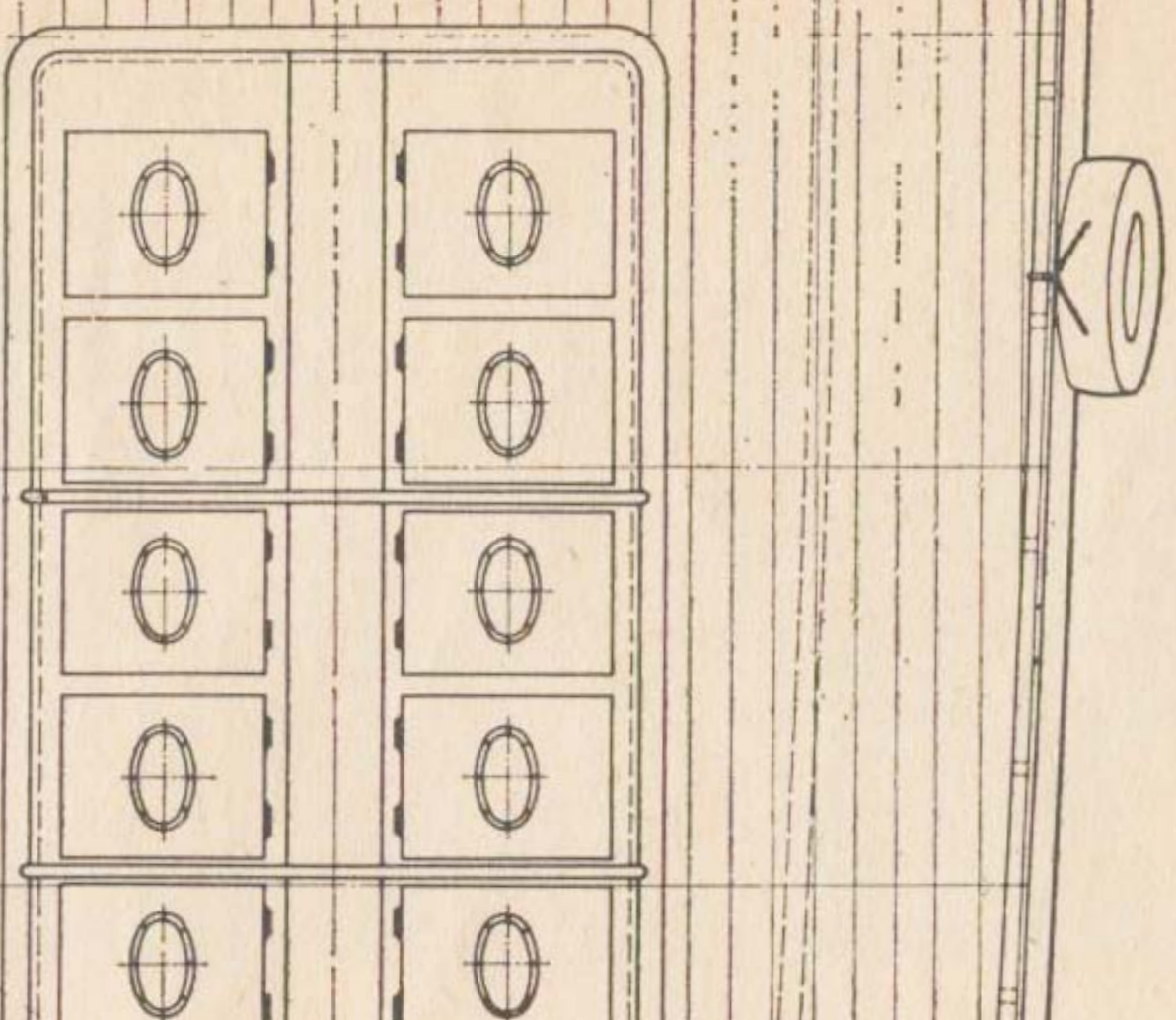
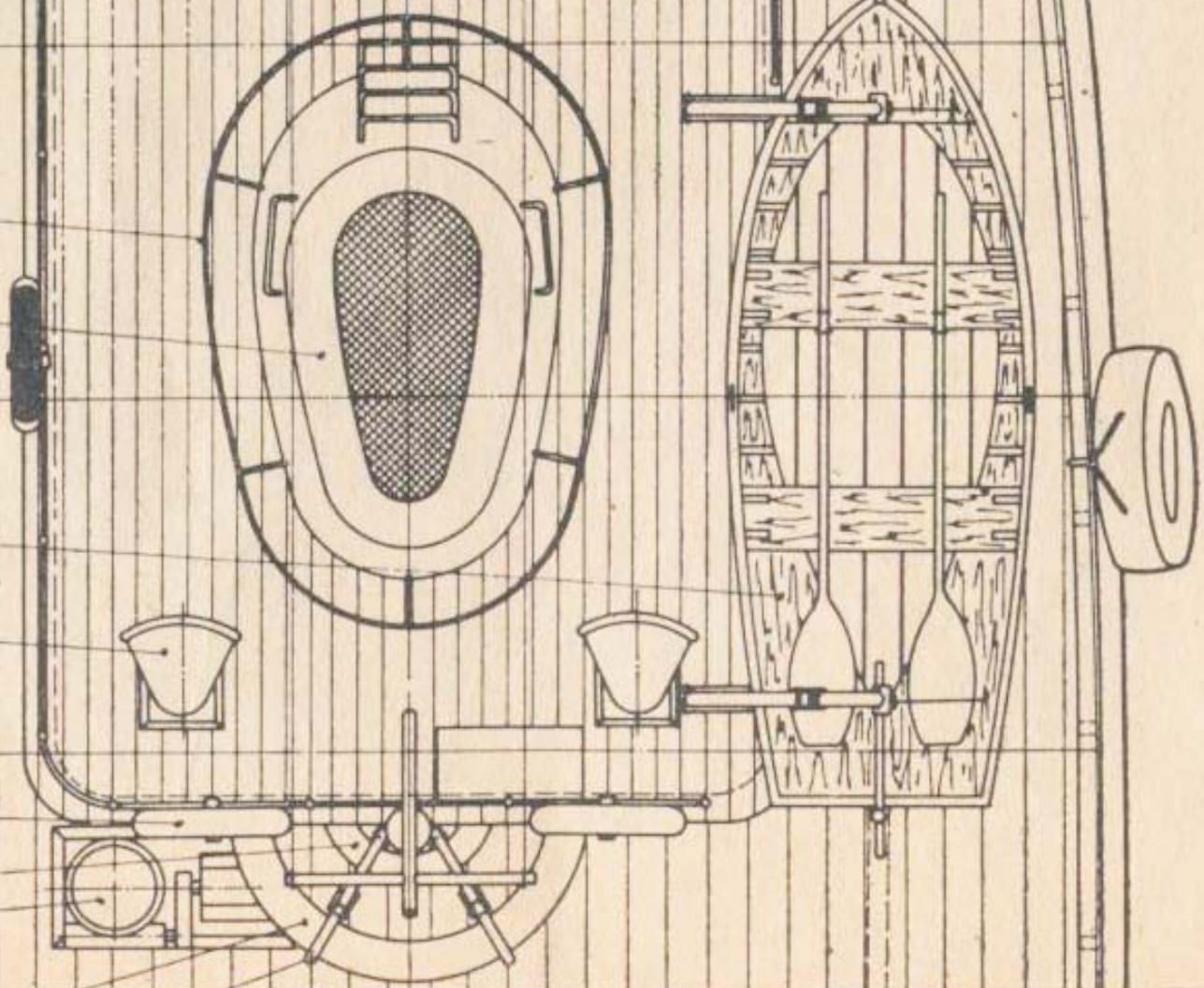




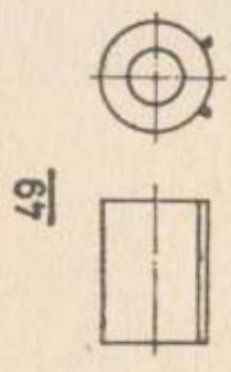
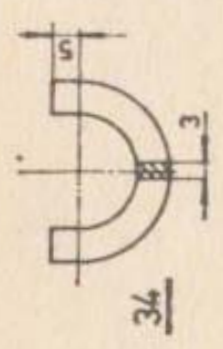
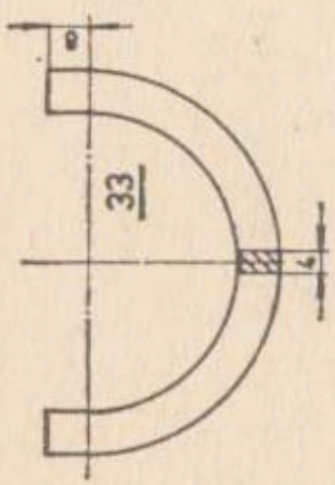






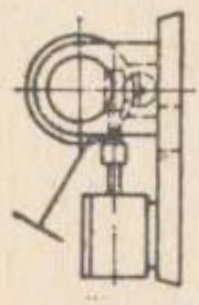
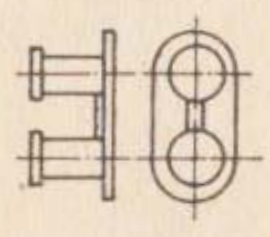




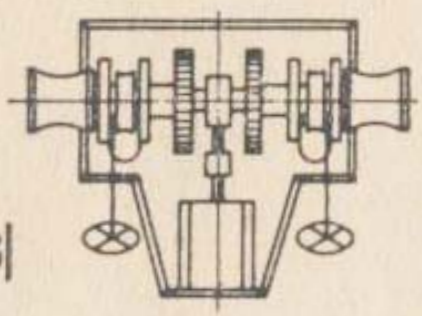


49

19

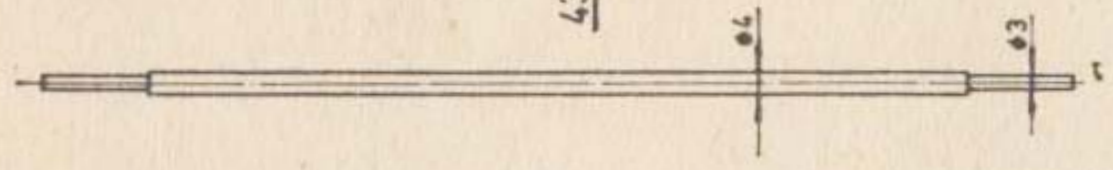


20



ČÁSTEČNÝ

43



ČÁSTEČNÝ PŮHLED S

Patoh trupu z lišt 3 x 8

Patoh paluby z lišt 3 x 8

Lišta 5 x 5

50

Lišta 5 x 5

Lišta 4 x 8

S



