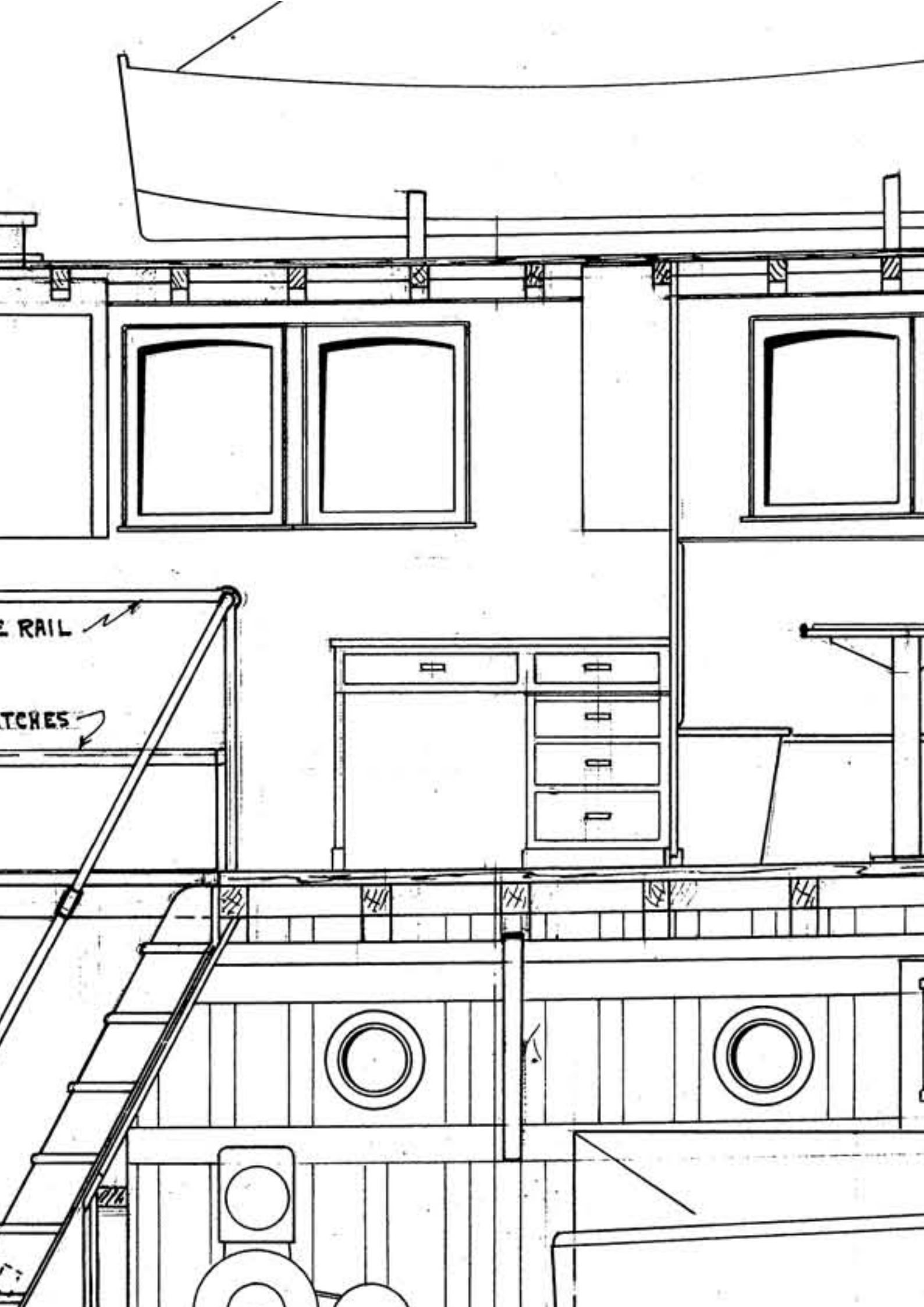
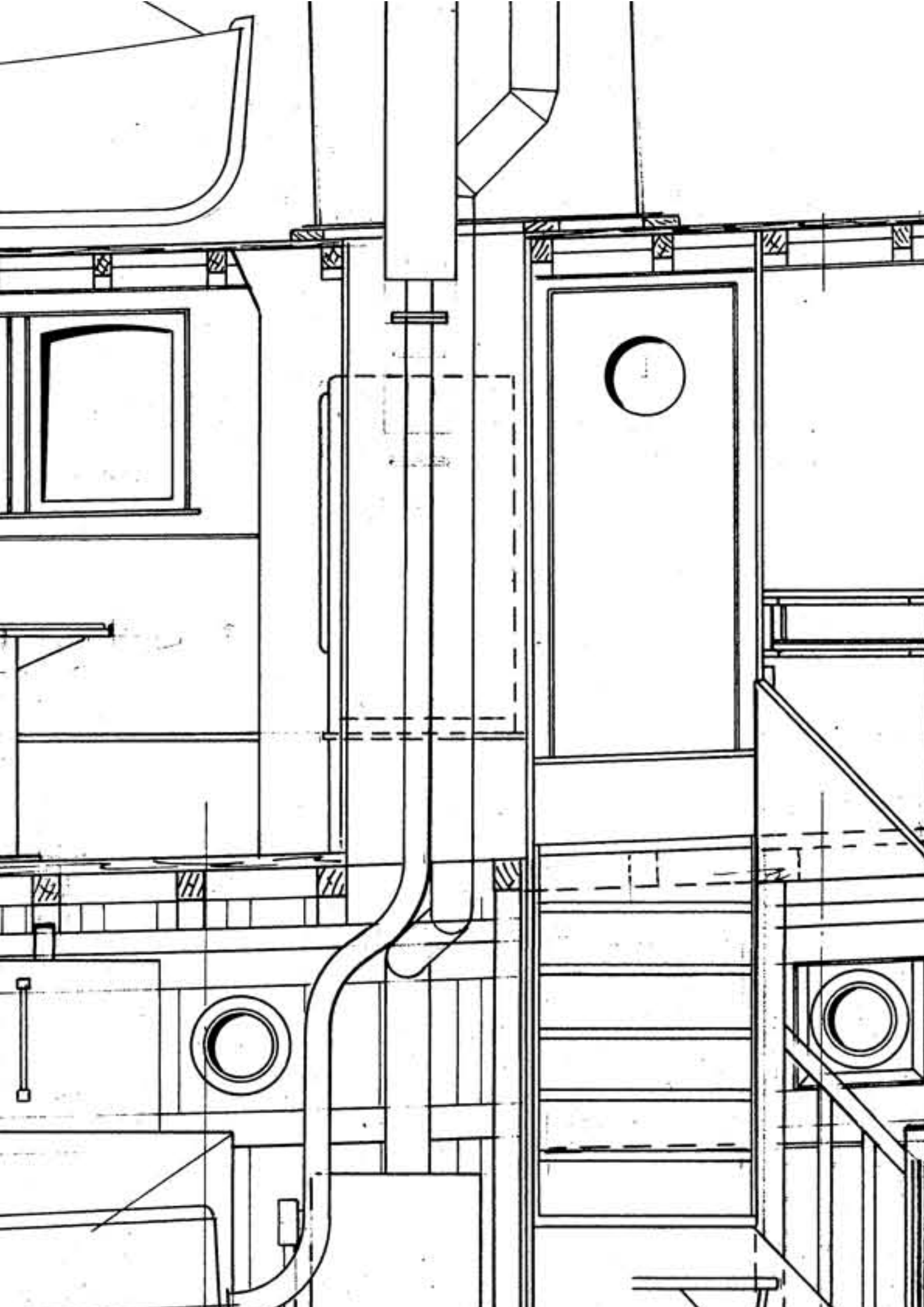


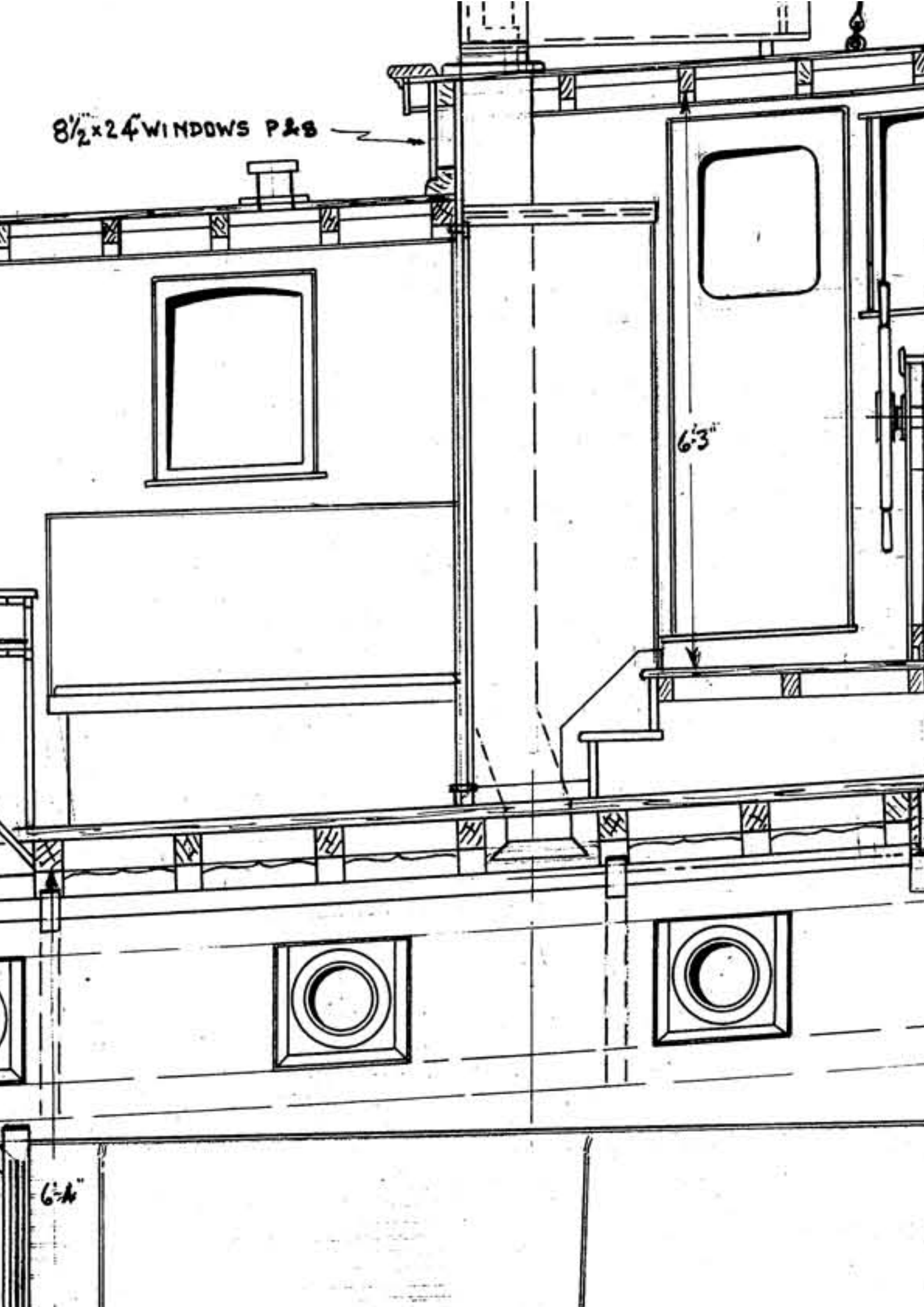
PORTABLE

HINGED HATCH





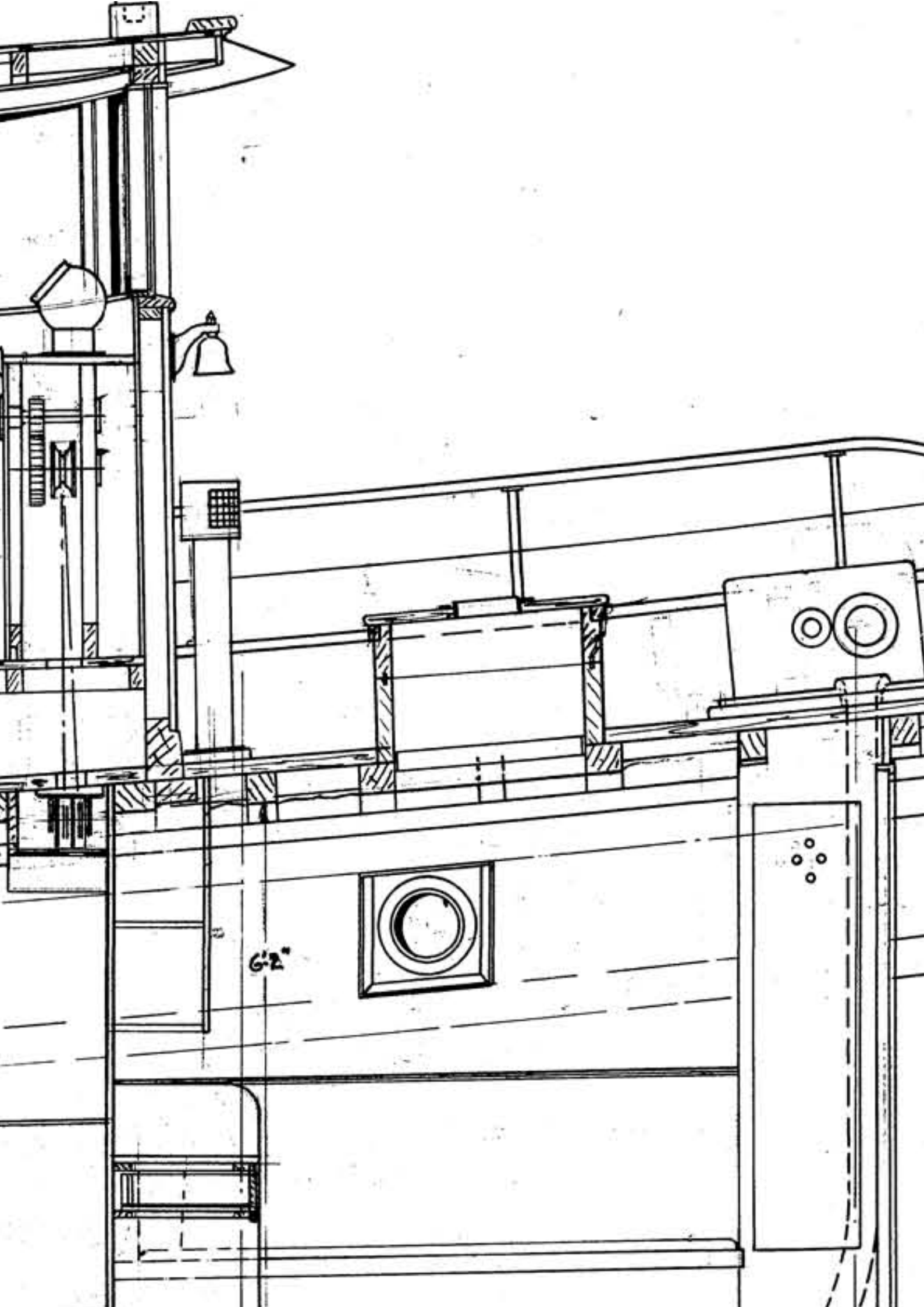
8 1/2" x 24" WINDOWS P & S

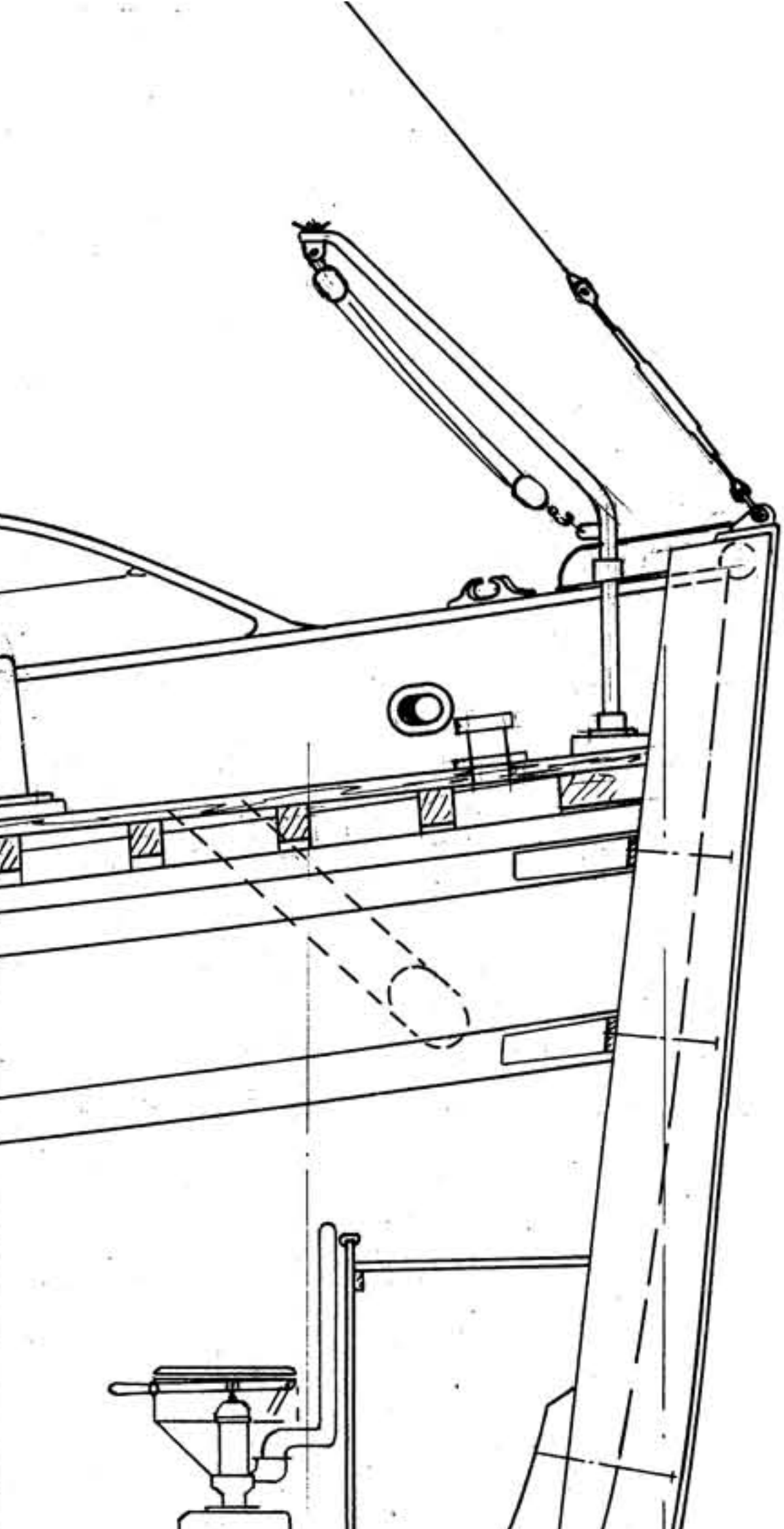


6'3"

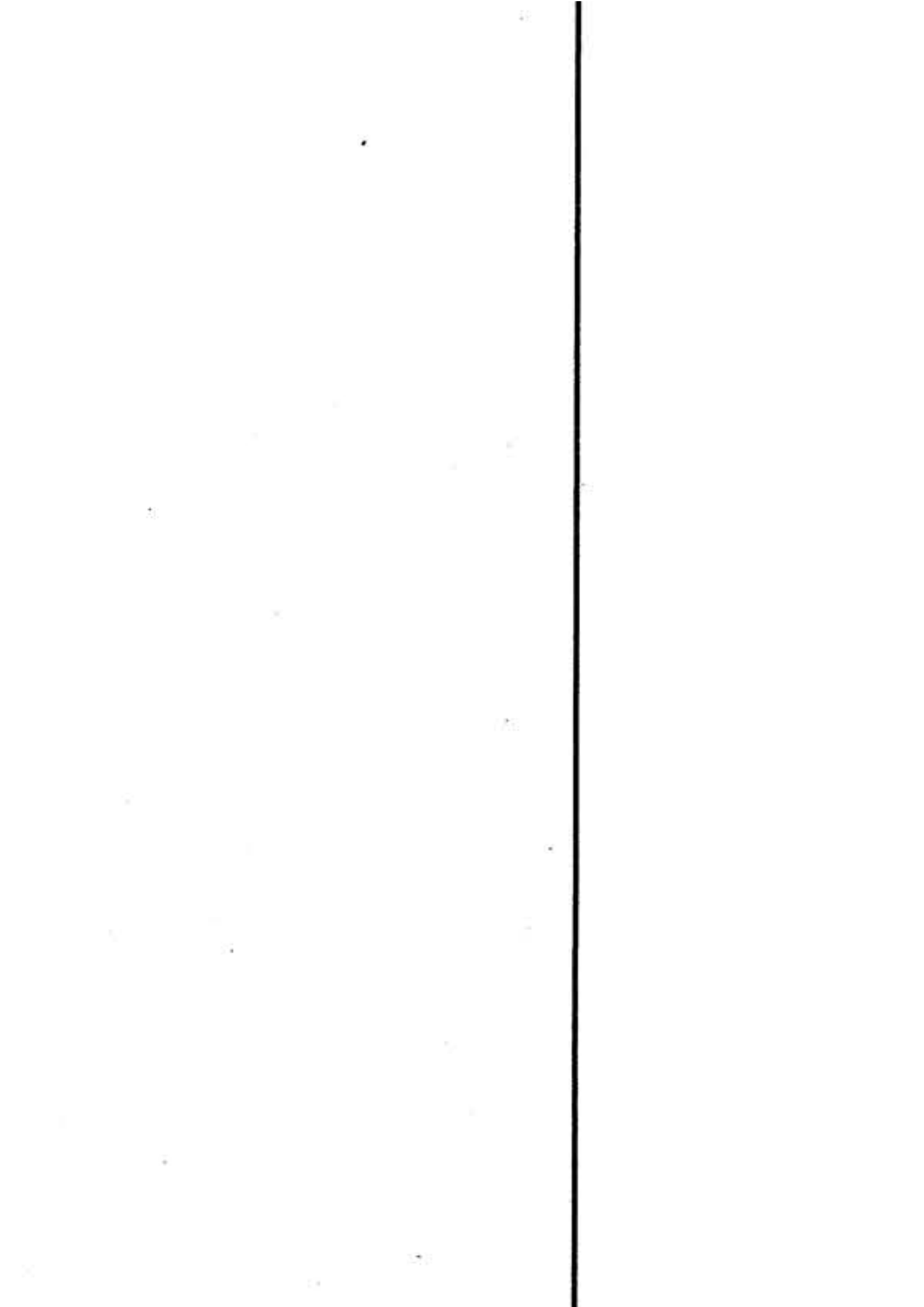
6'-4"

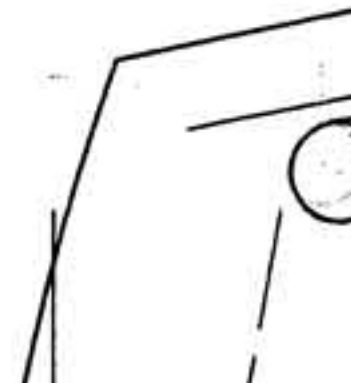
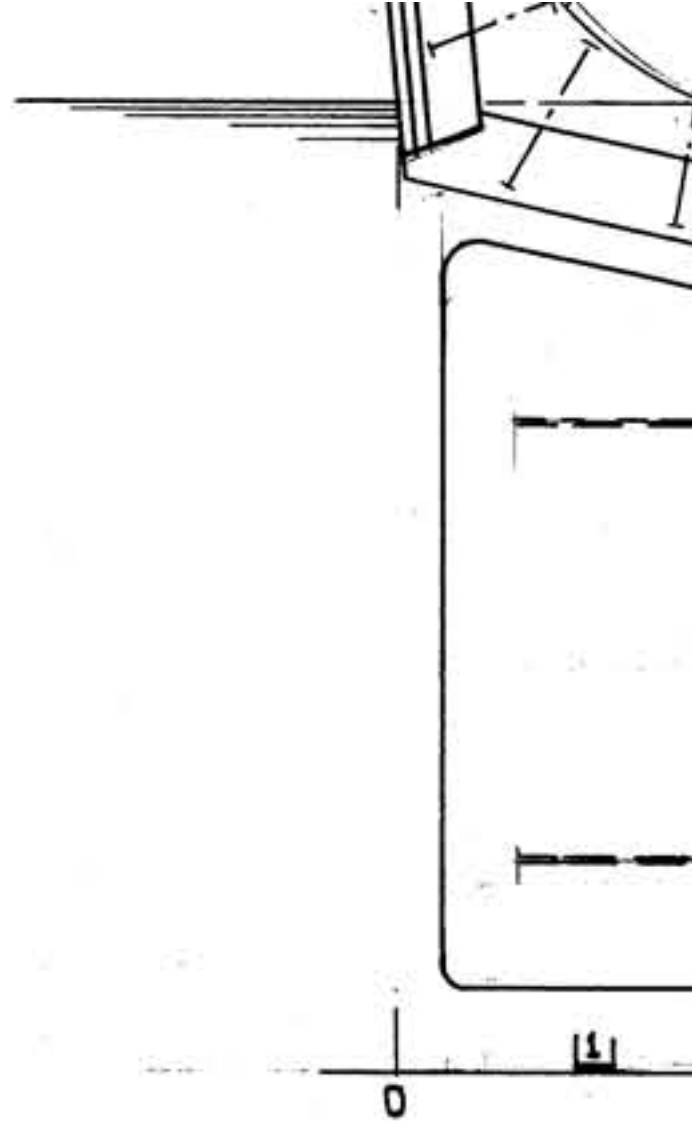


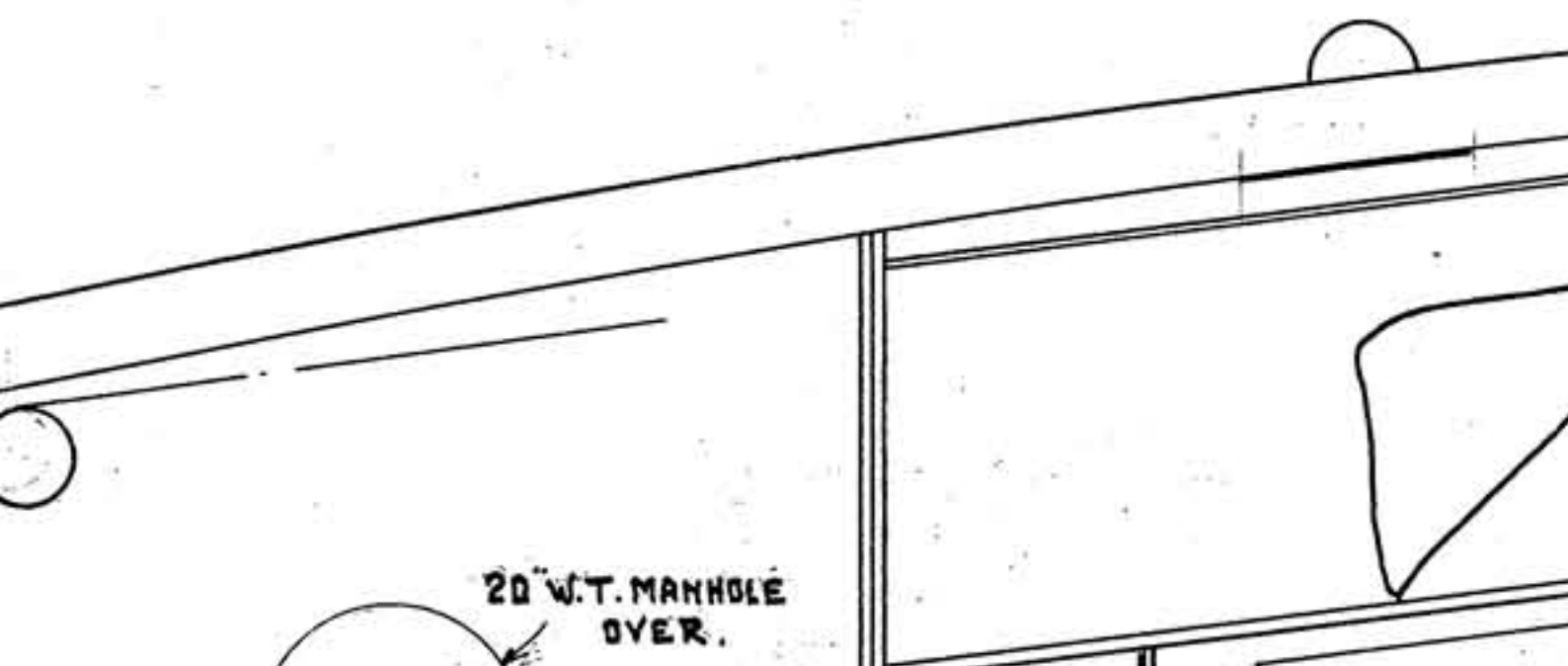
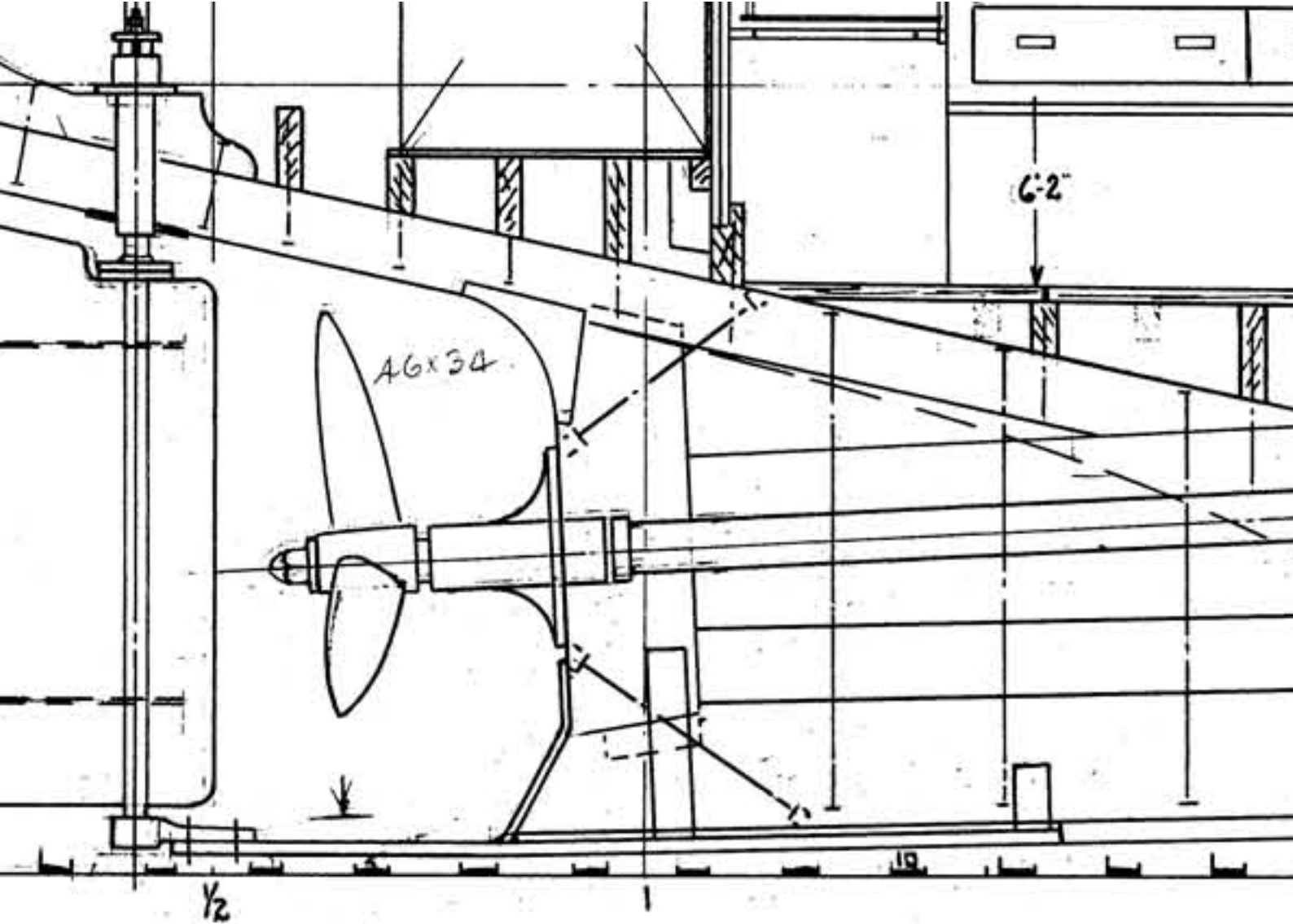


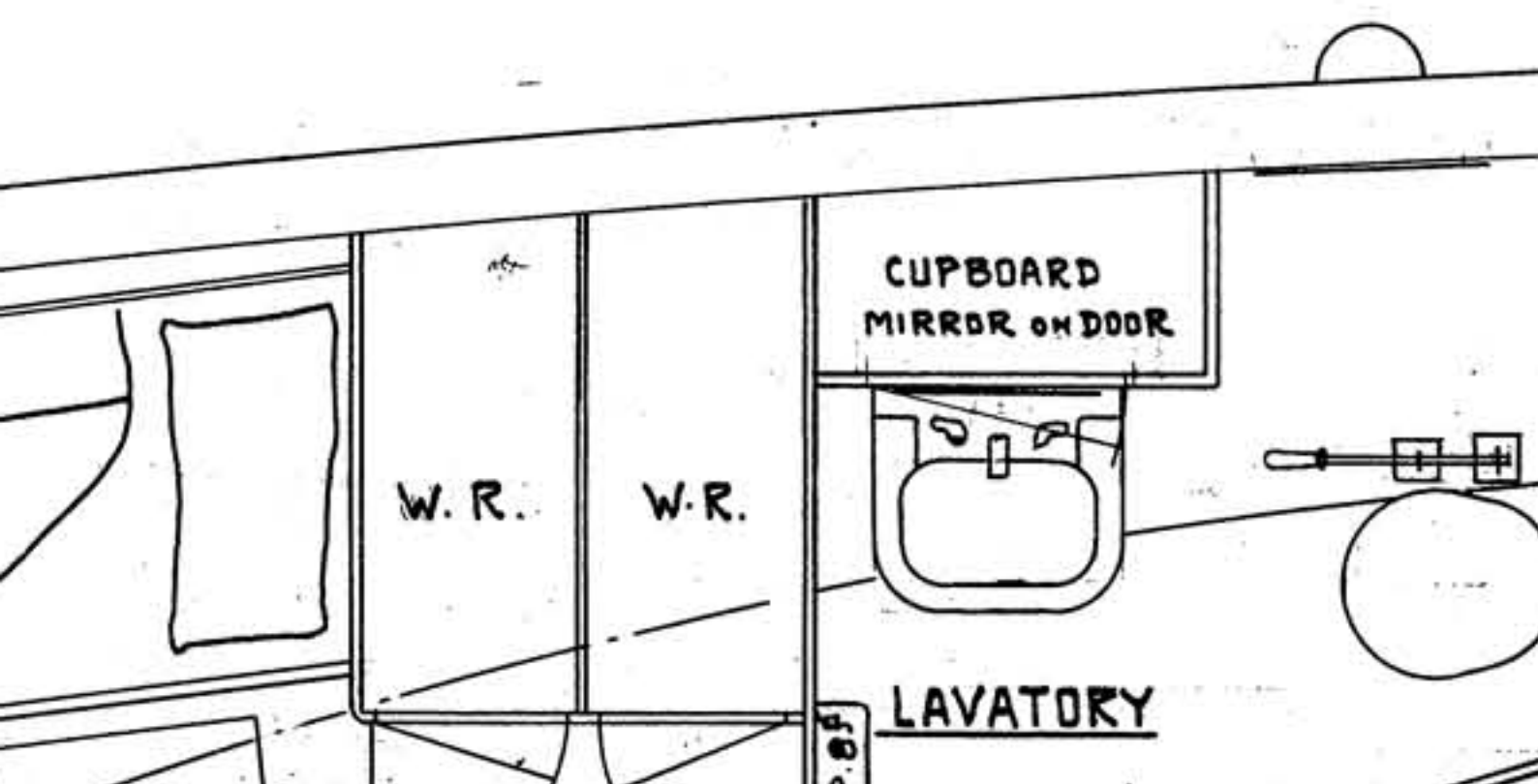
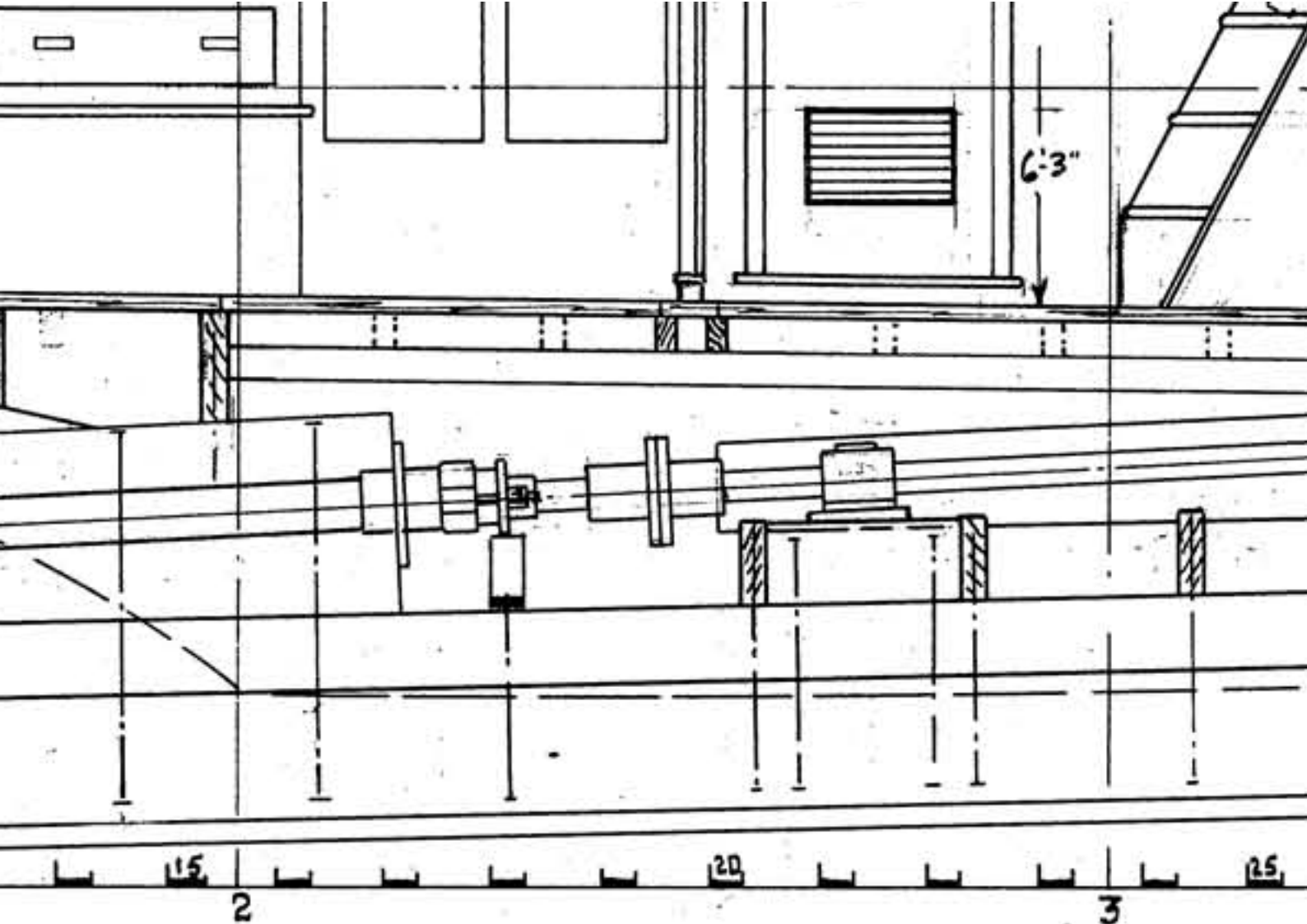


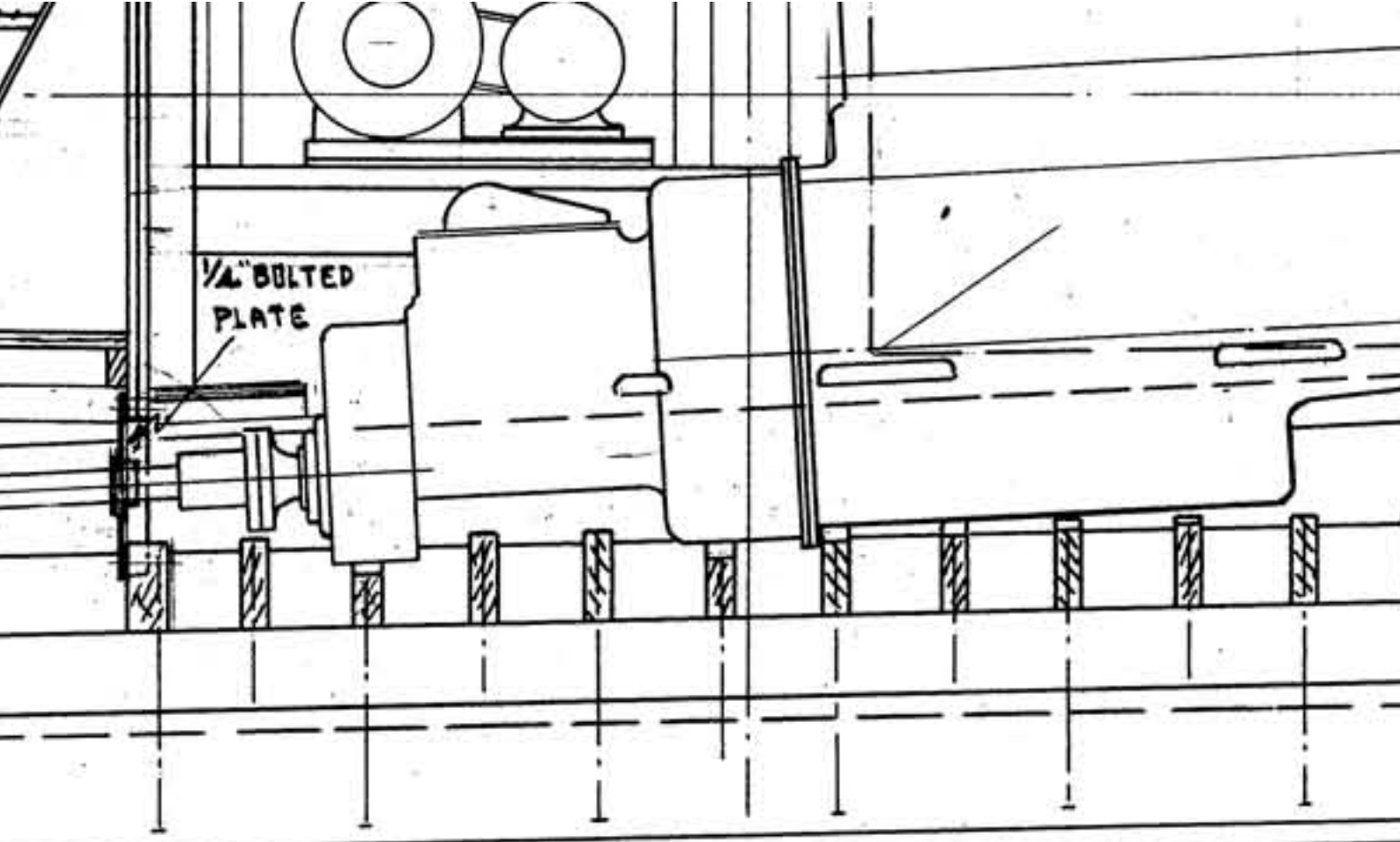








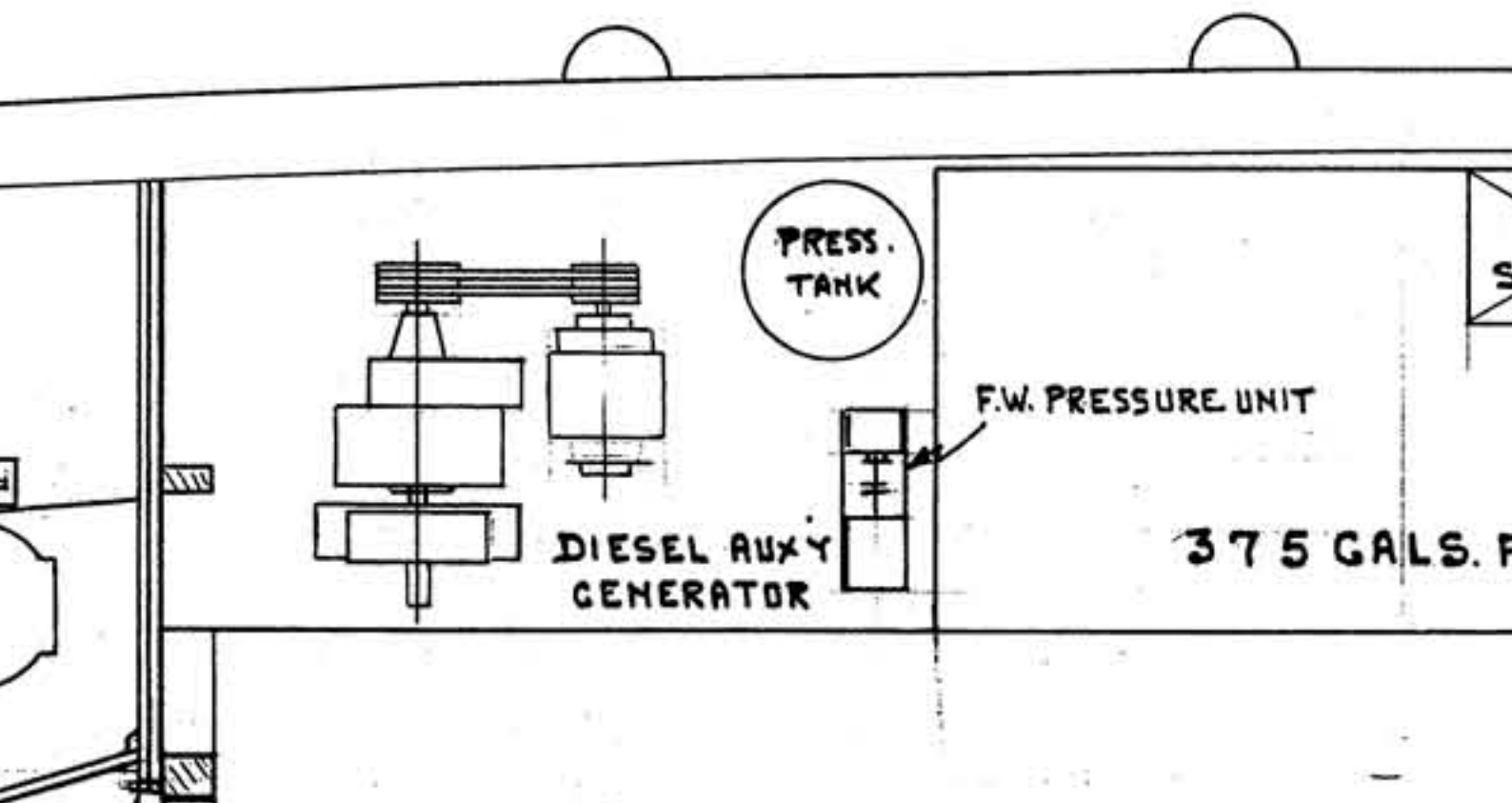




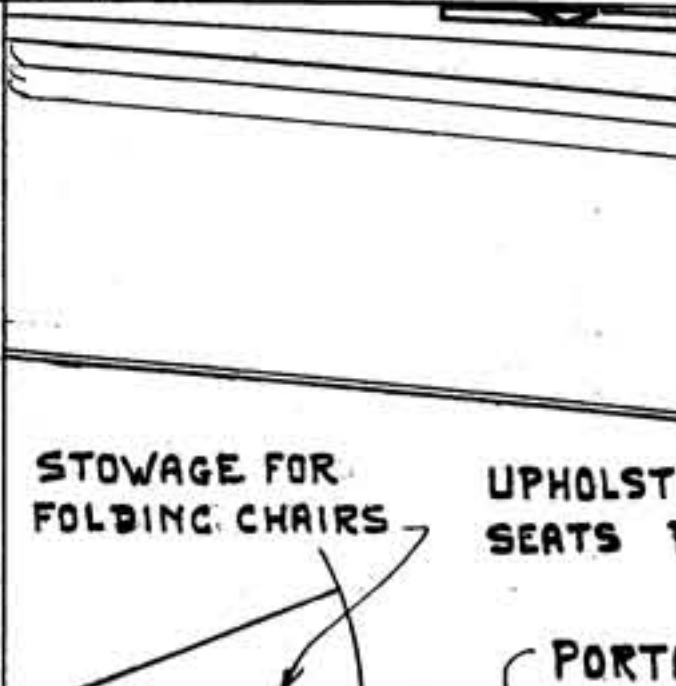
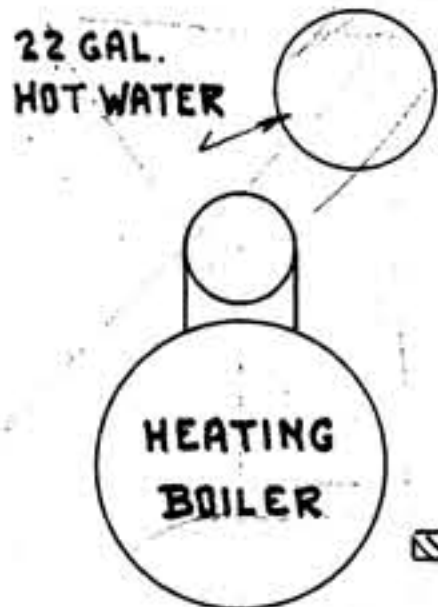
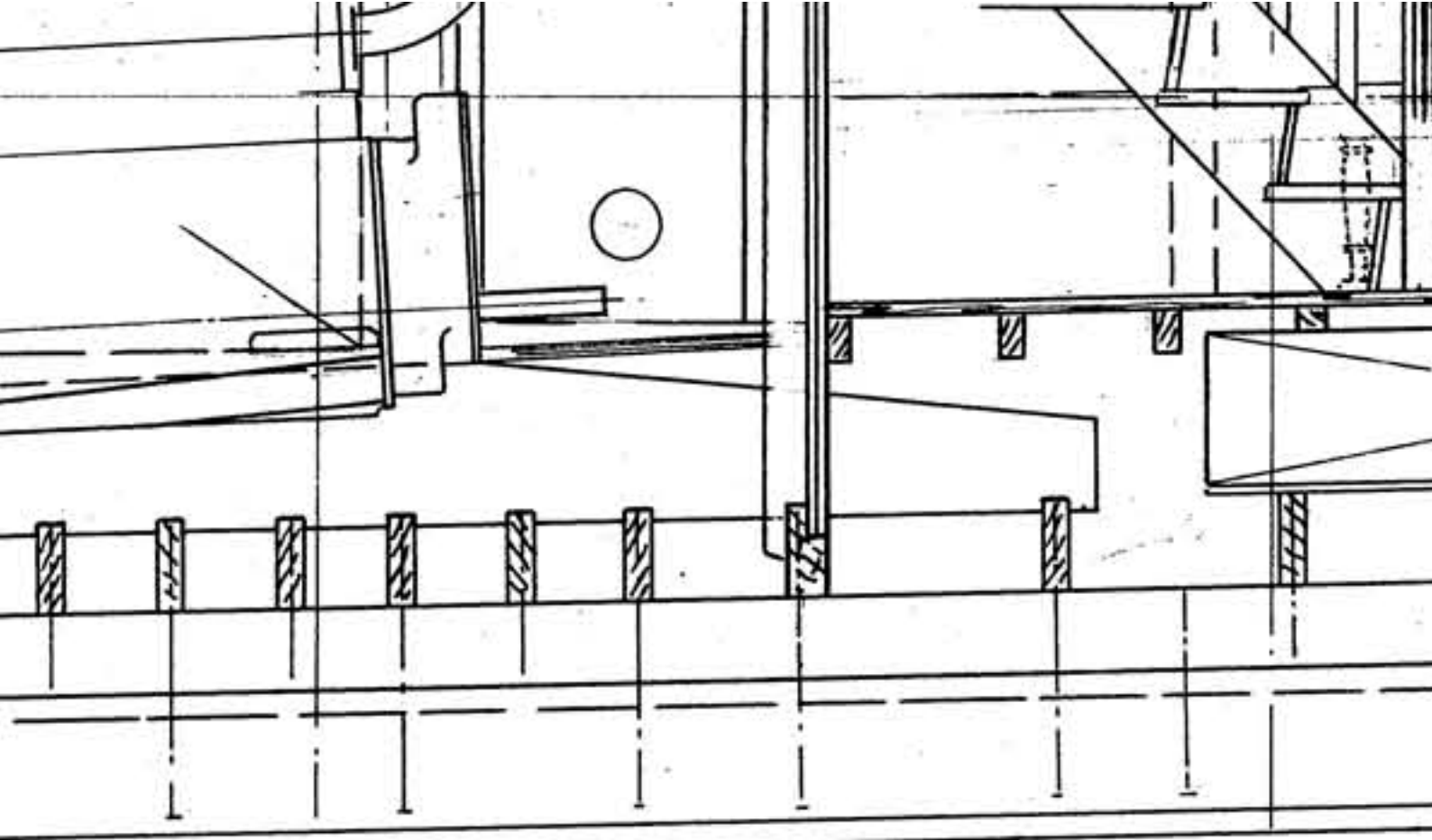
30

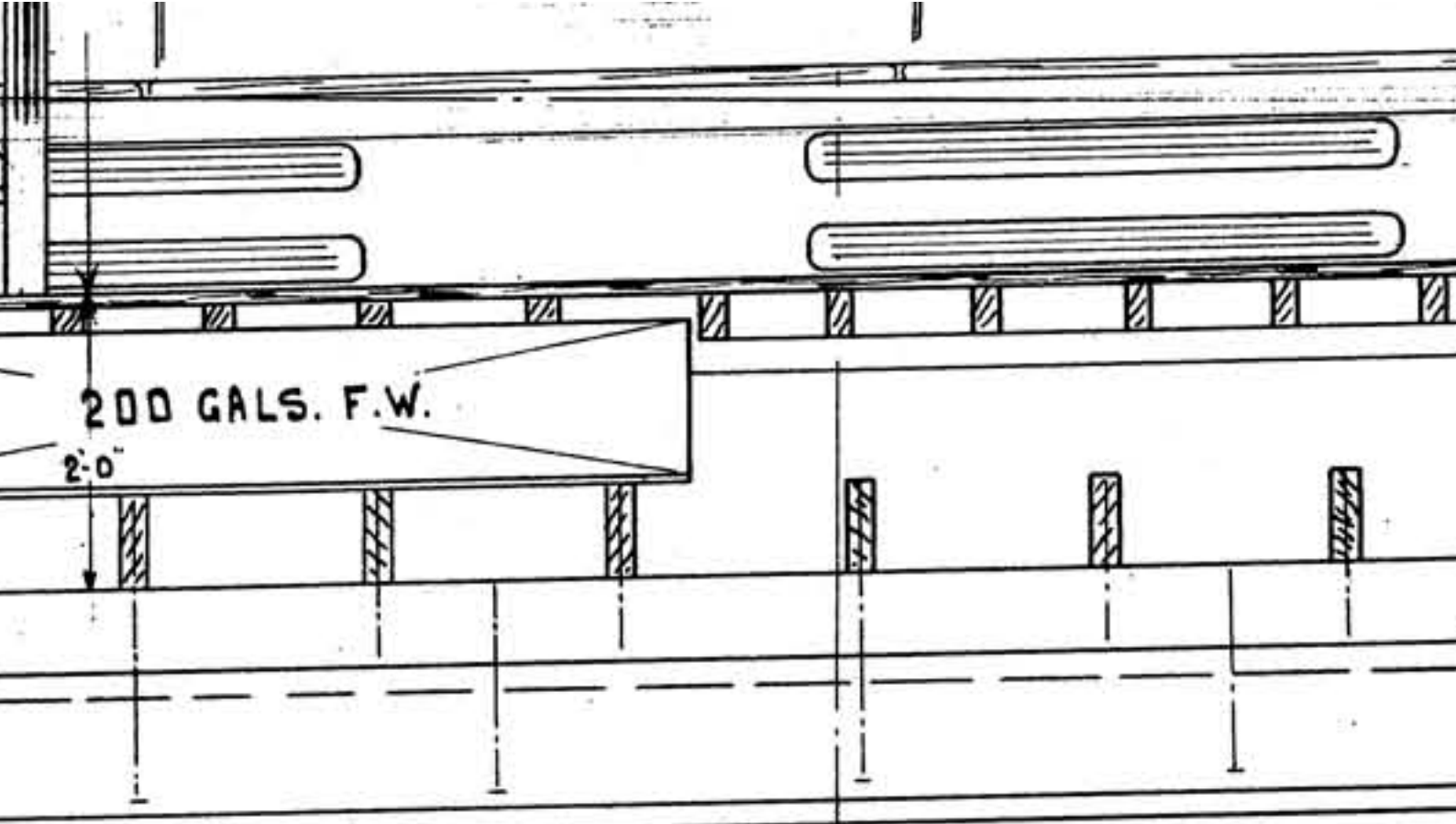
4

35



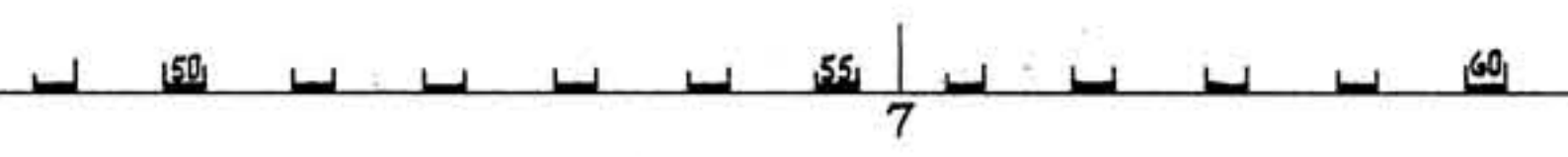






200 GALS. F.W.

2'-0"

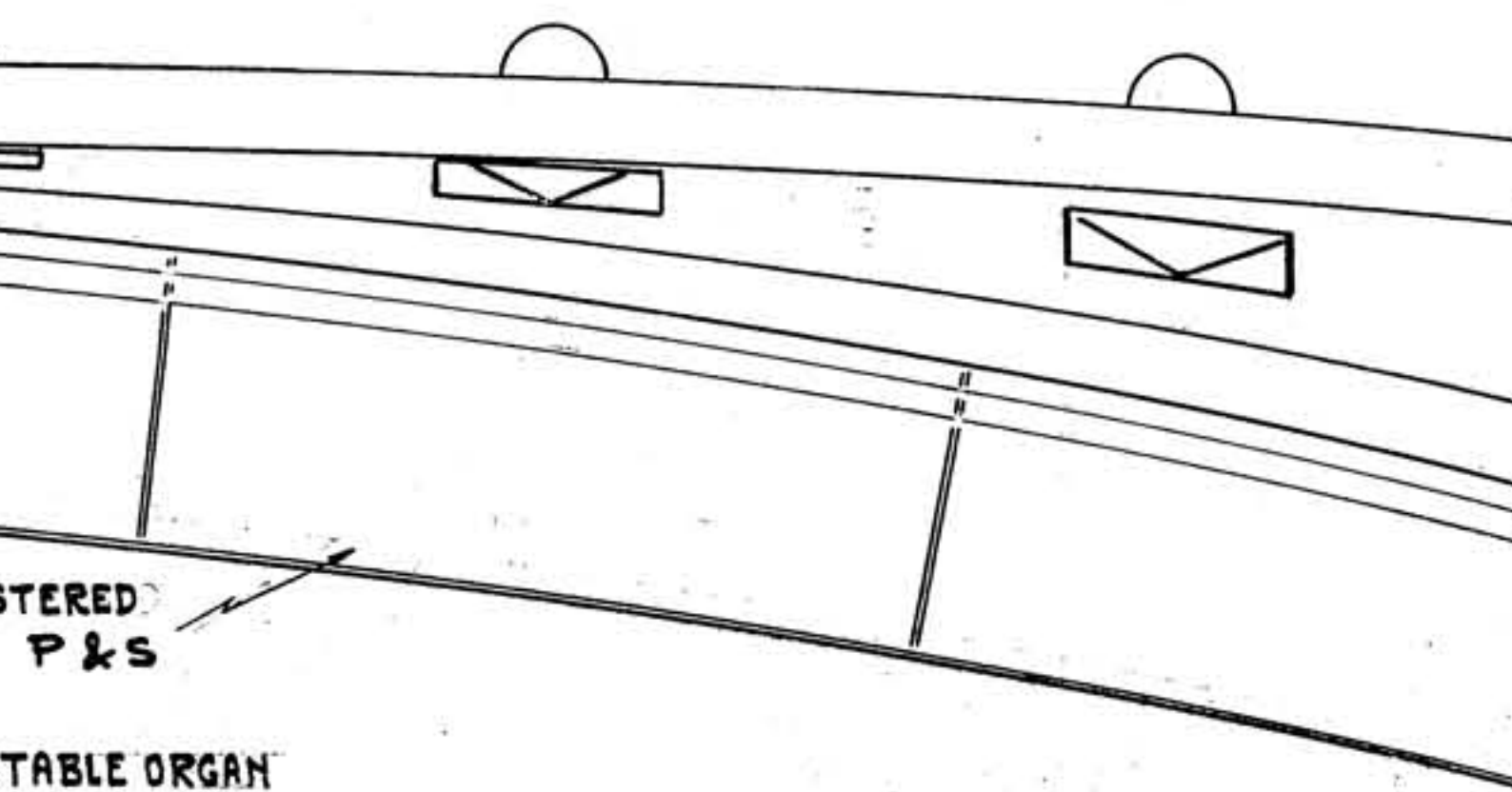


50

55

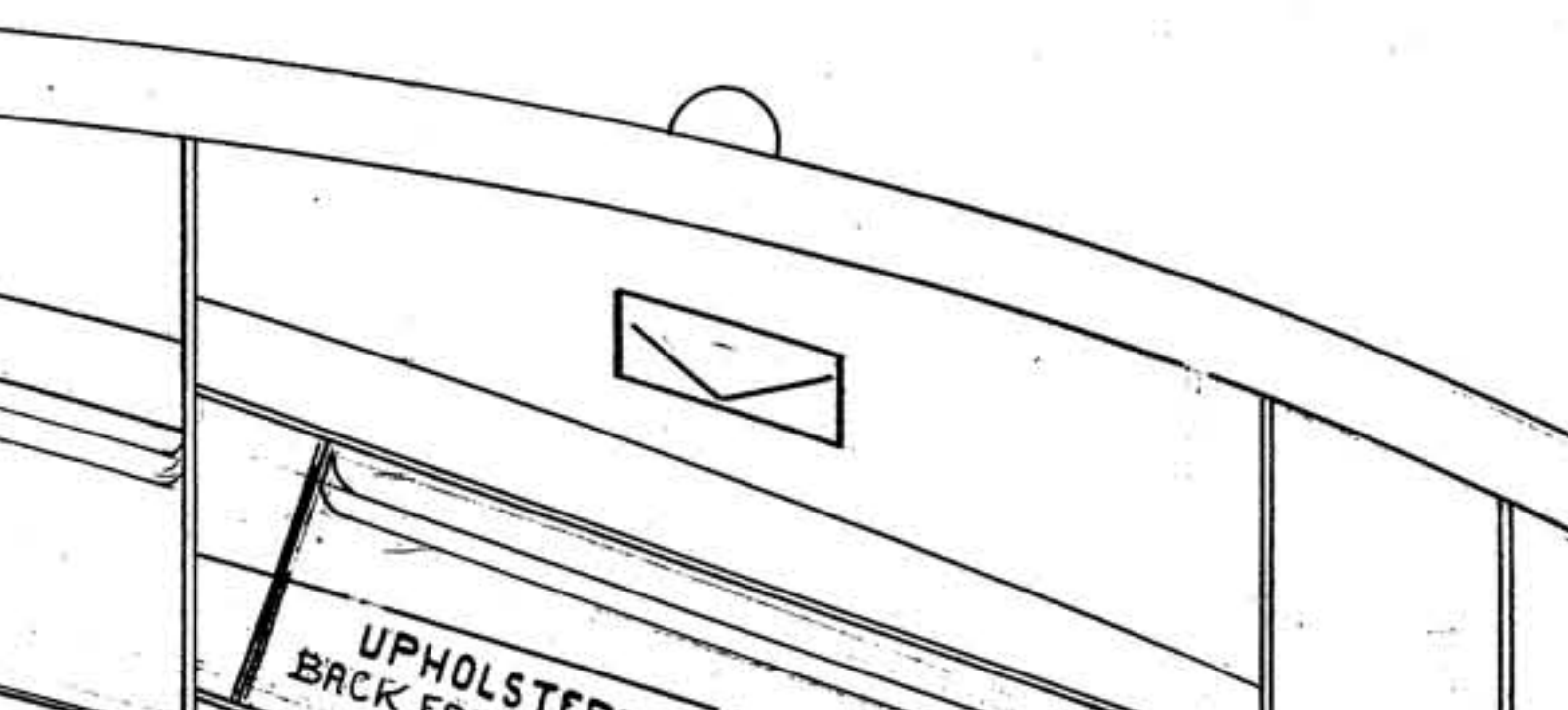
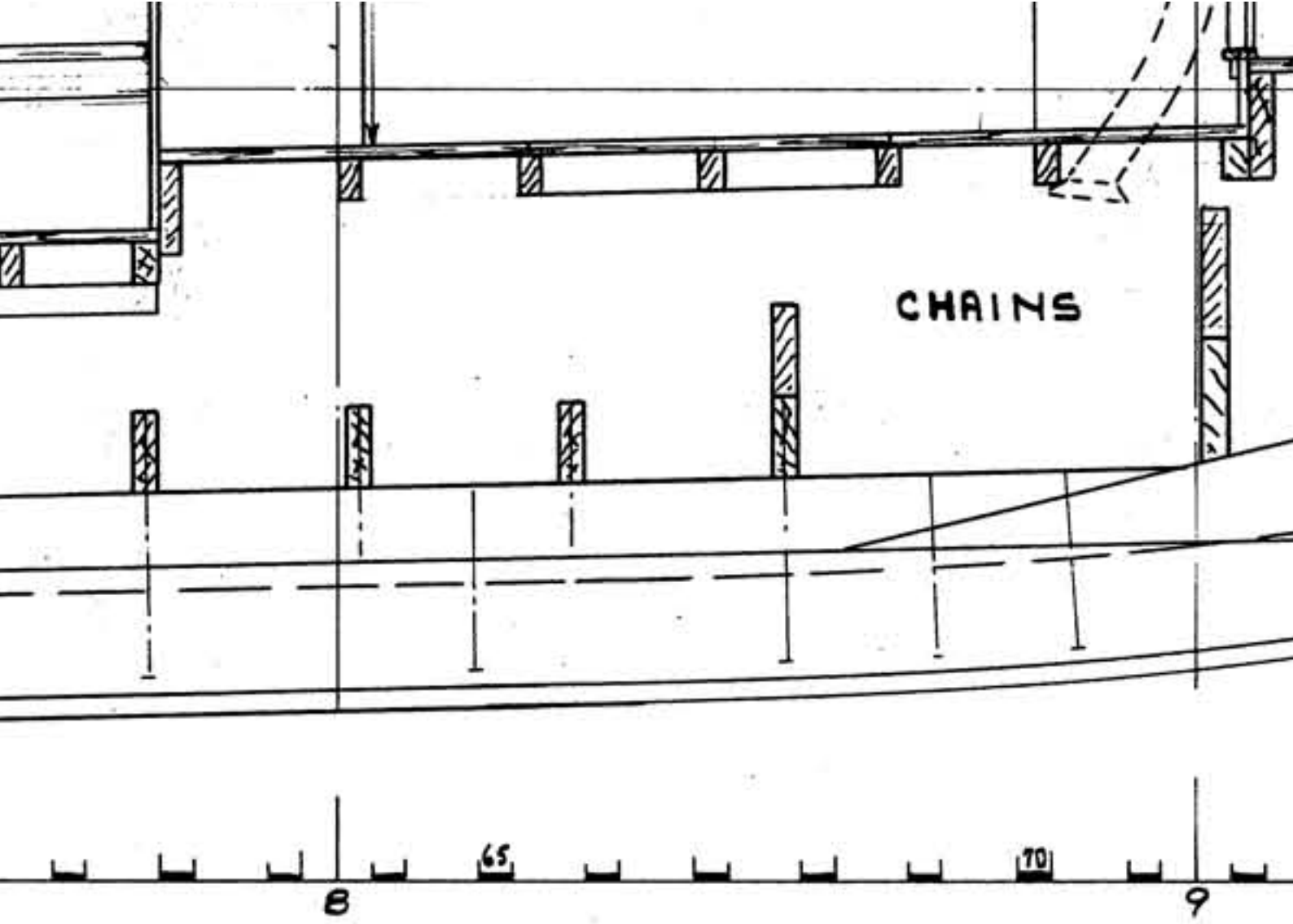
60

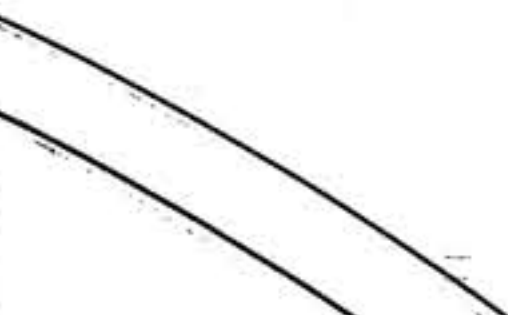
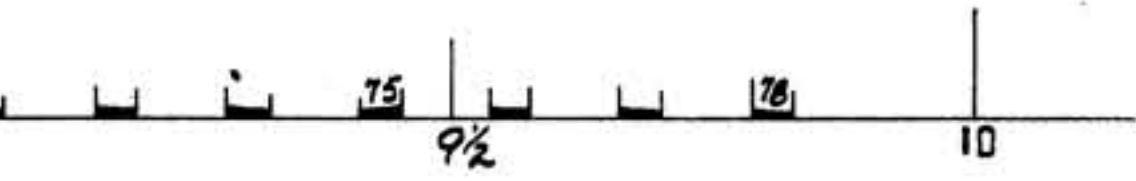
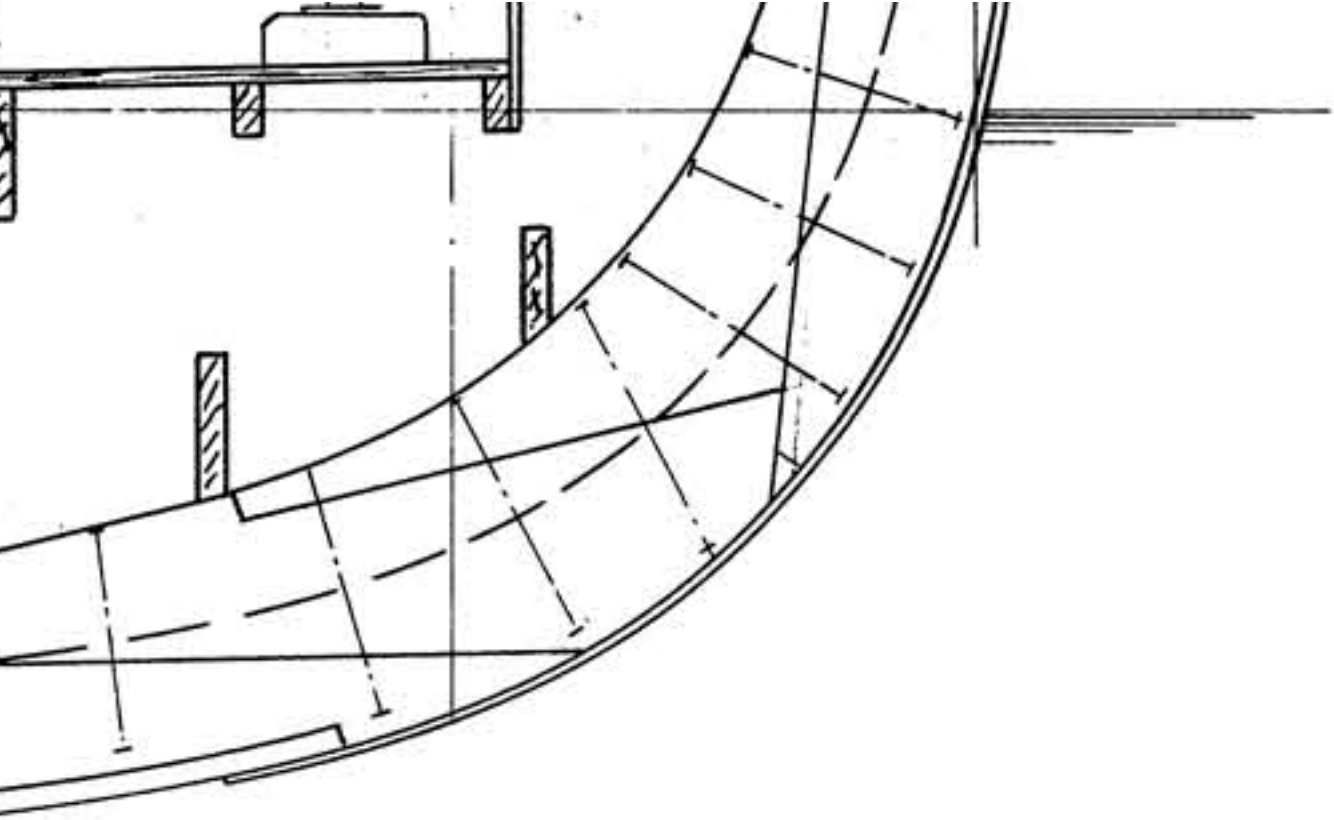
7



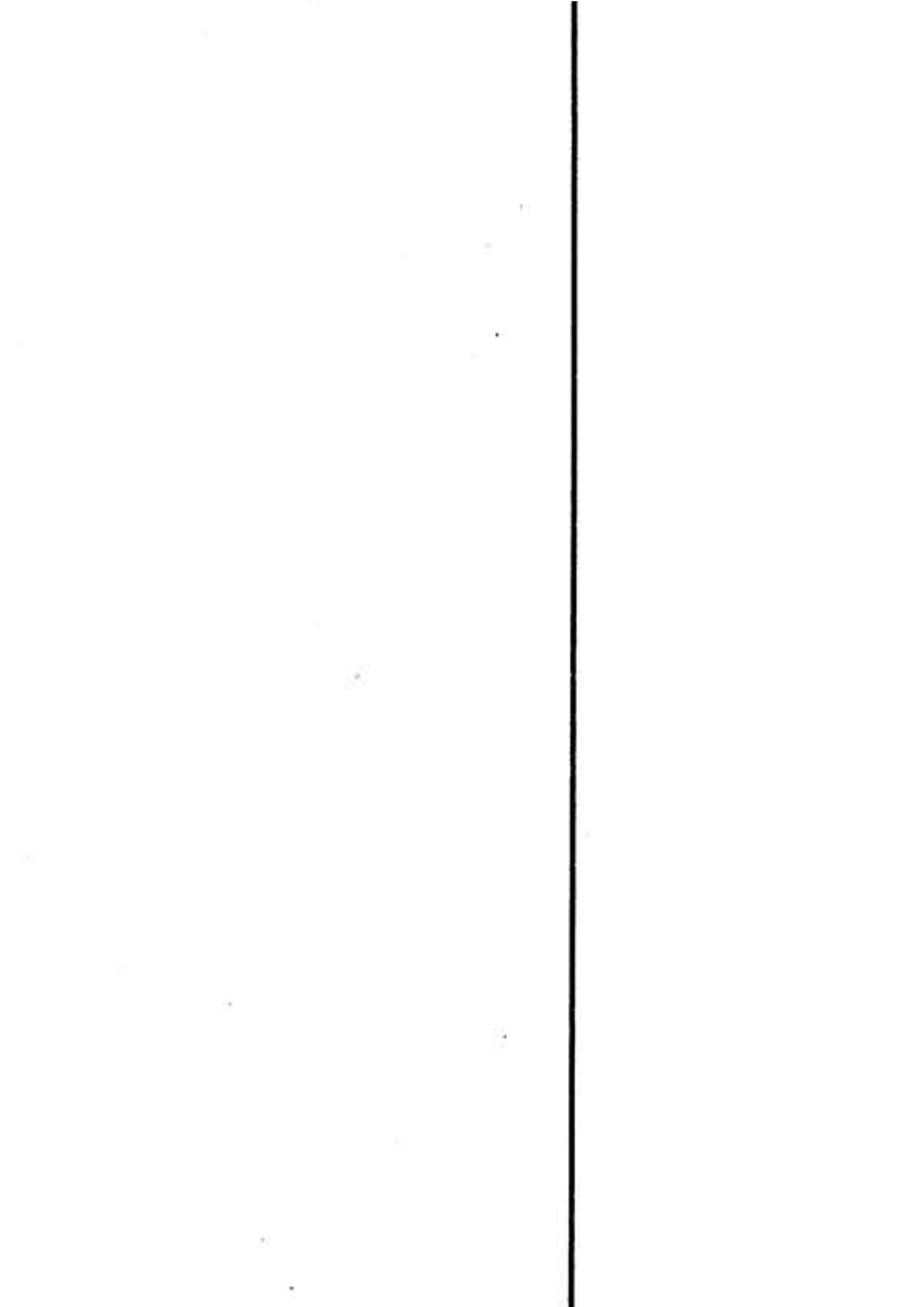
STERED  
P&S

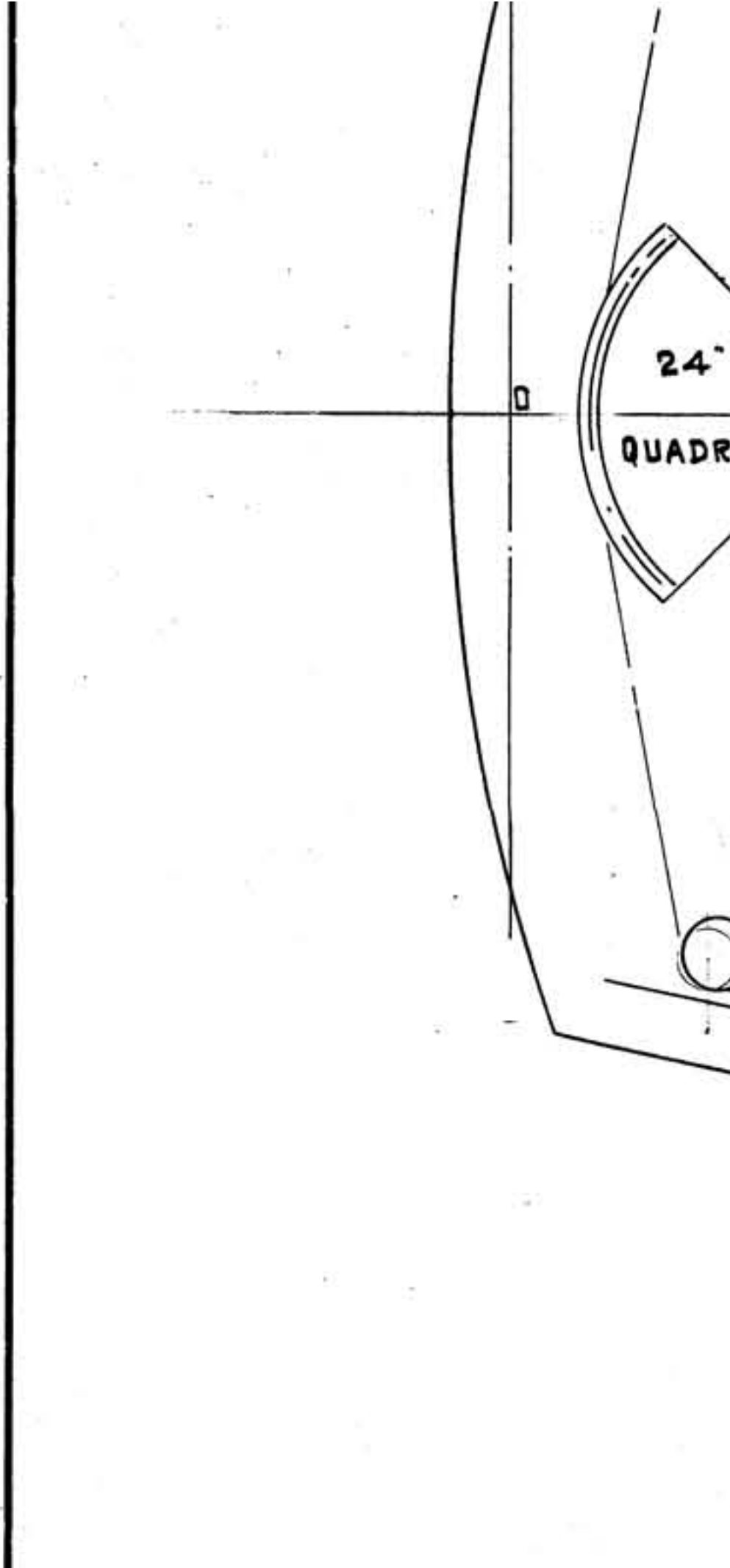
TABLE ORGAN











300 GALS.  
F.W.

DRESSING  
TABLE

MIRROR

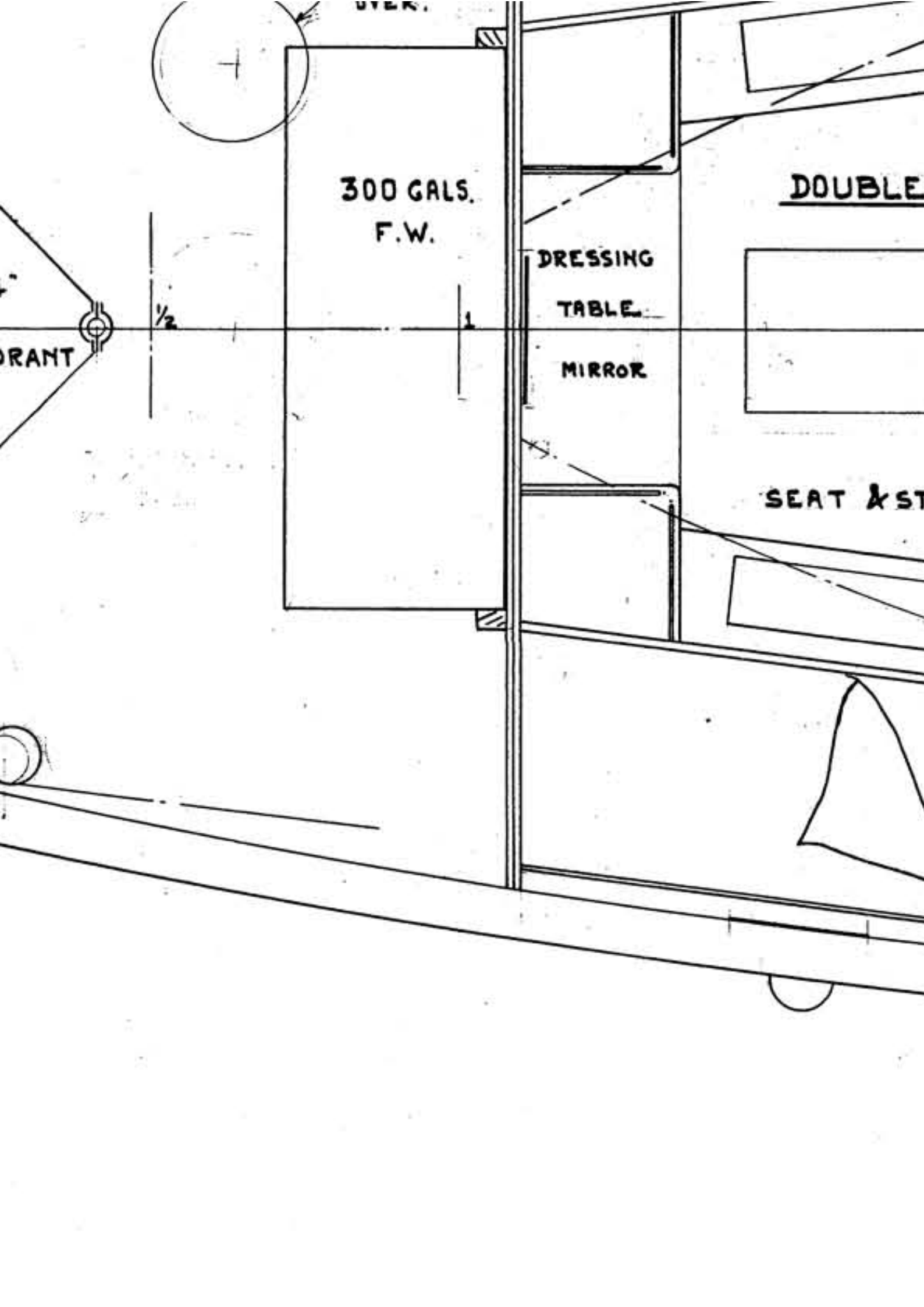
DOUBLE

SEAT & ST

RANT

$\frac{1}{2}$

1





E STATEROOM

LOBBY

UP

RAD. 31 9

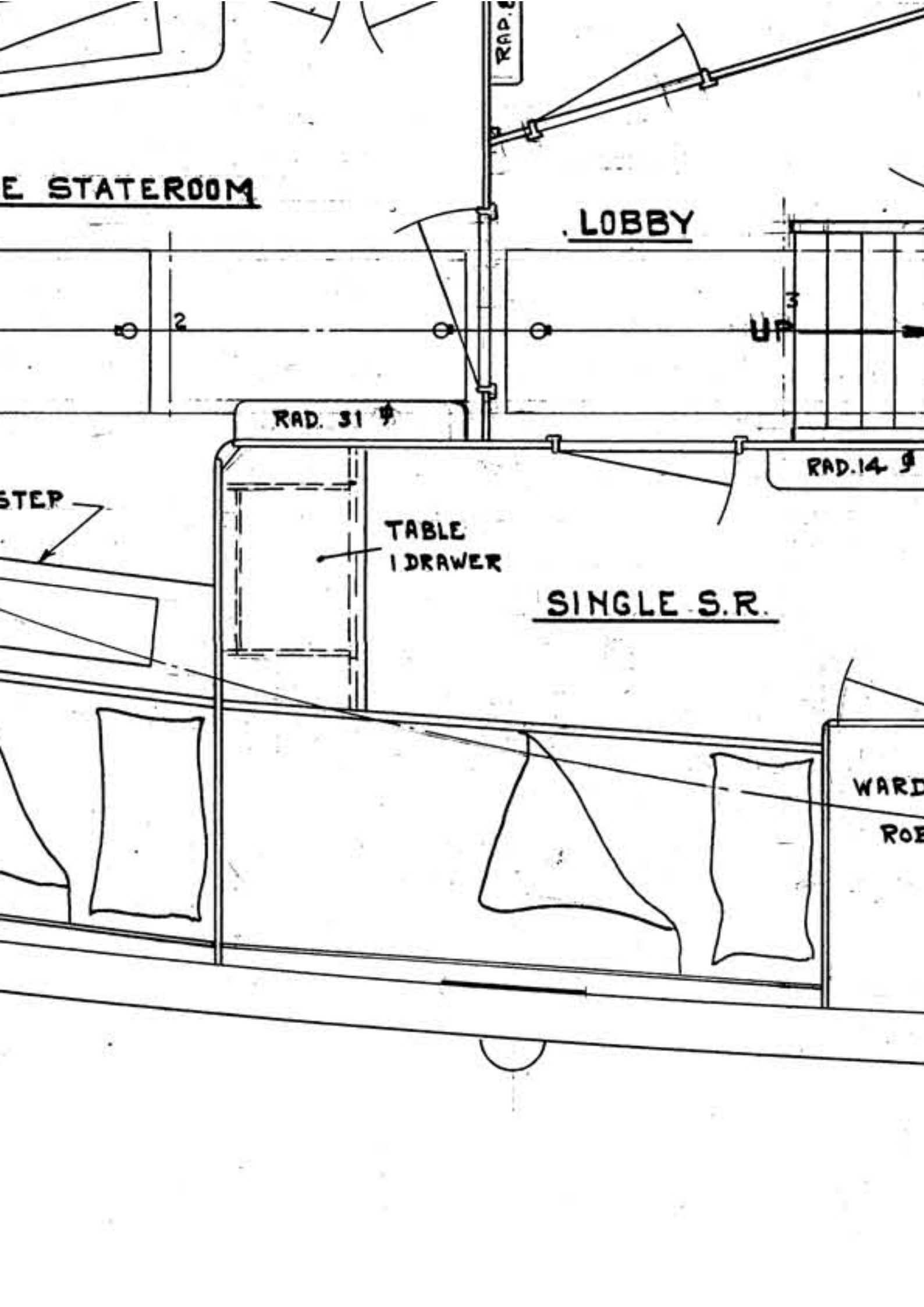
RAD. 14 9

STEP

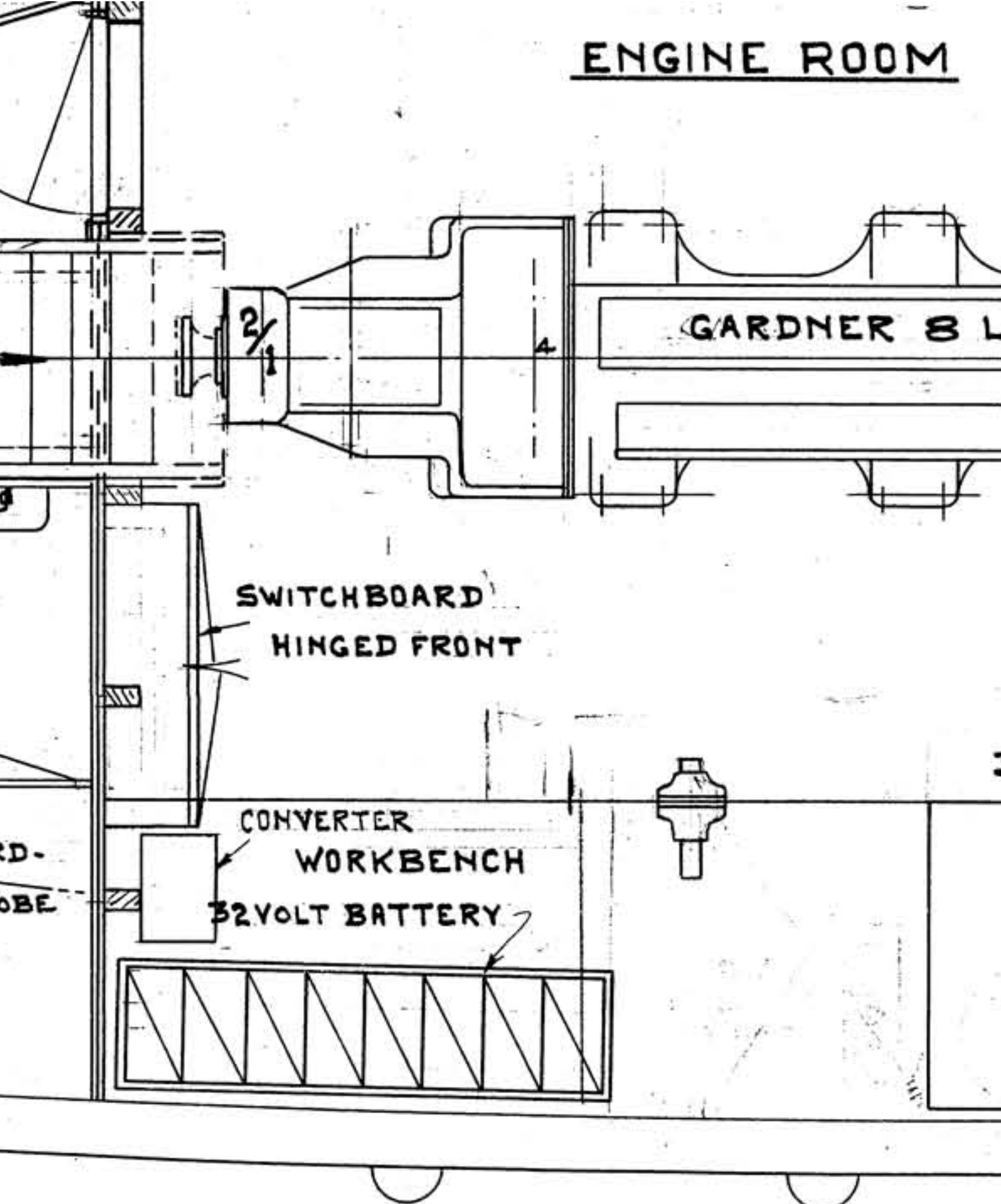
TABLE  
1 DRAWER

SINGLE S.R.

WARD  
ROE



ENGINE ROOM

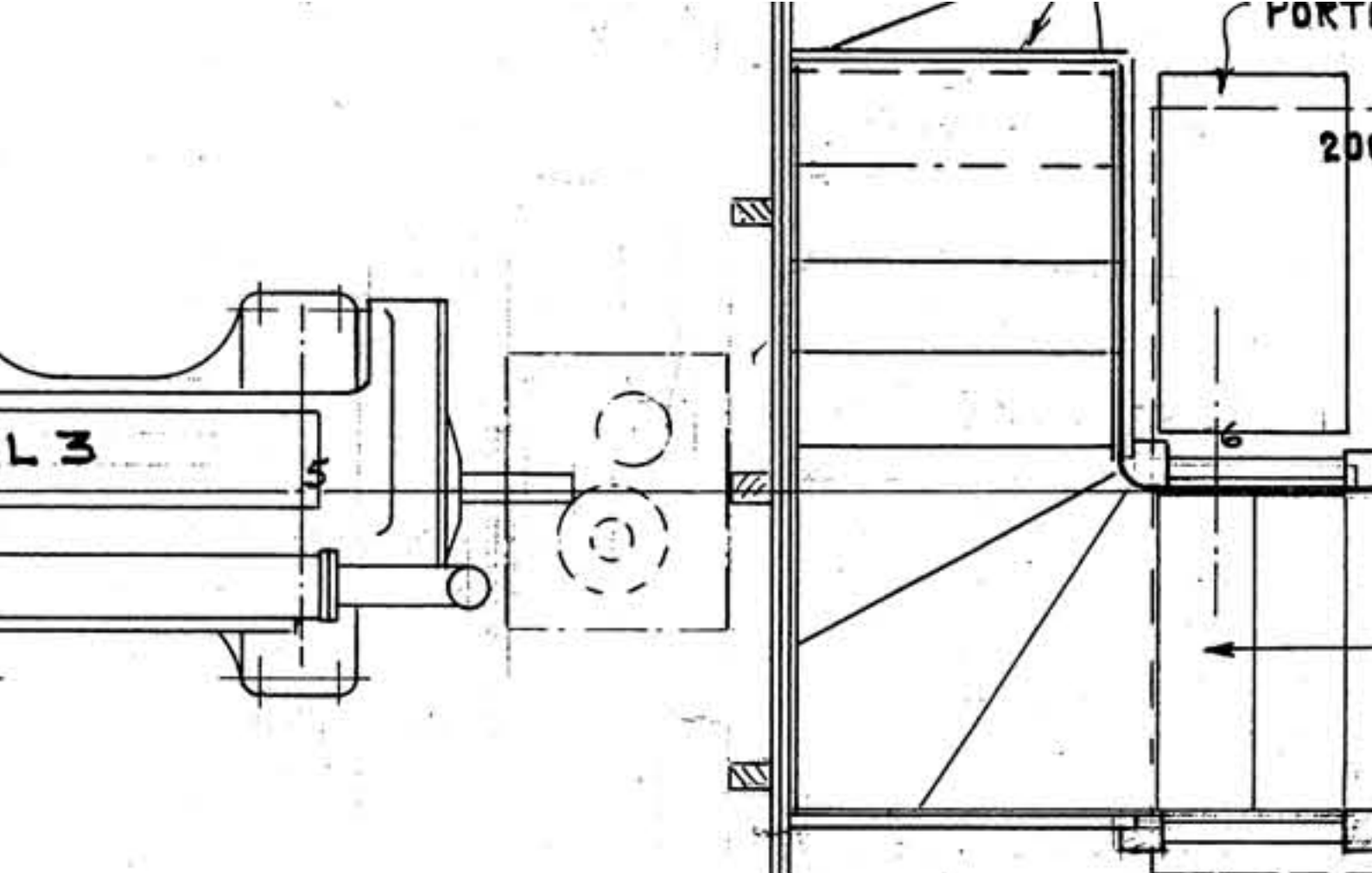


GARDNER 8 L

SWITCHBOARD  
HINGED FRONT

CONVERTER  
WORKBENCH  
32 VOLT BATTERY

D.  
OBE



**375 GALS. FUEL** → **RAD. 40°** →

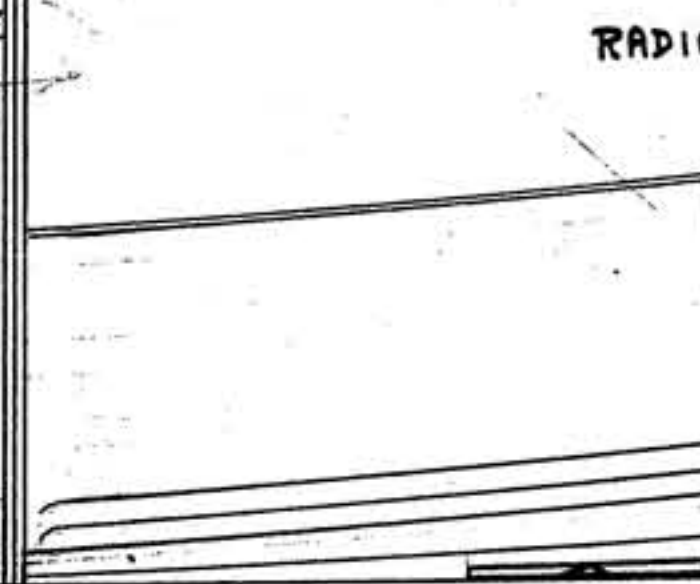
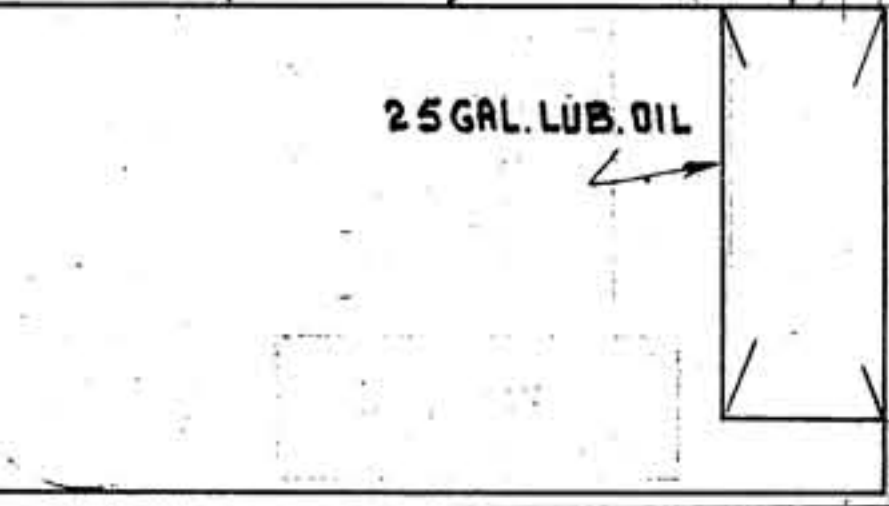


TABLE ORGAN

100 GALS. F.W. UNDER

F.H. ○

UP

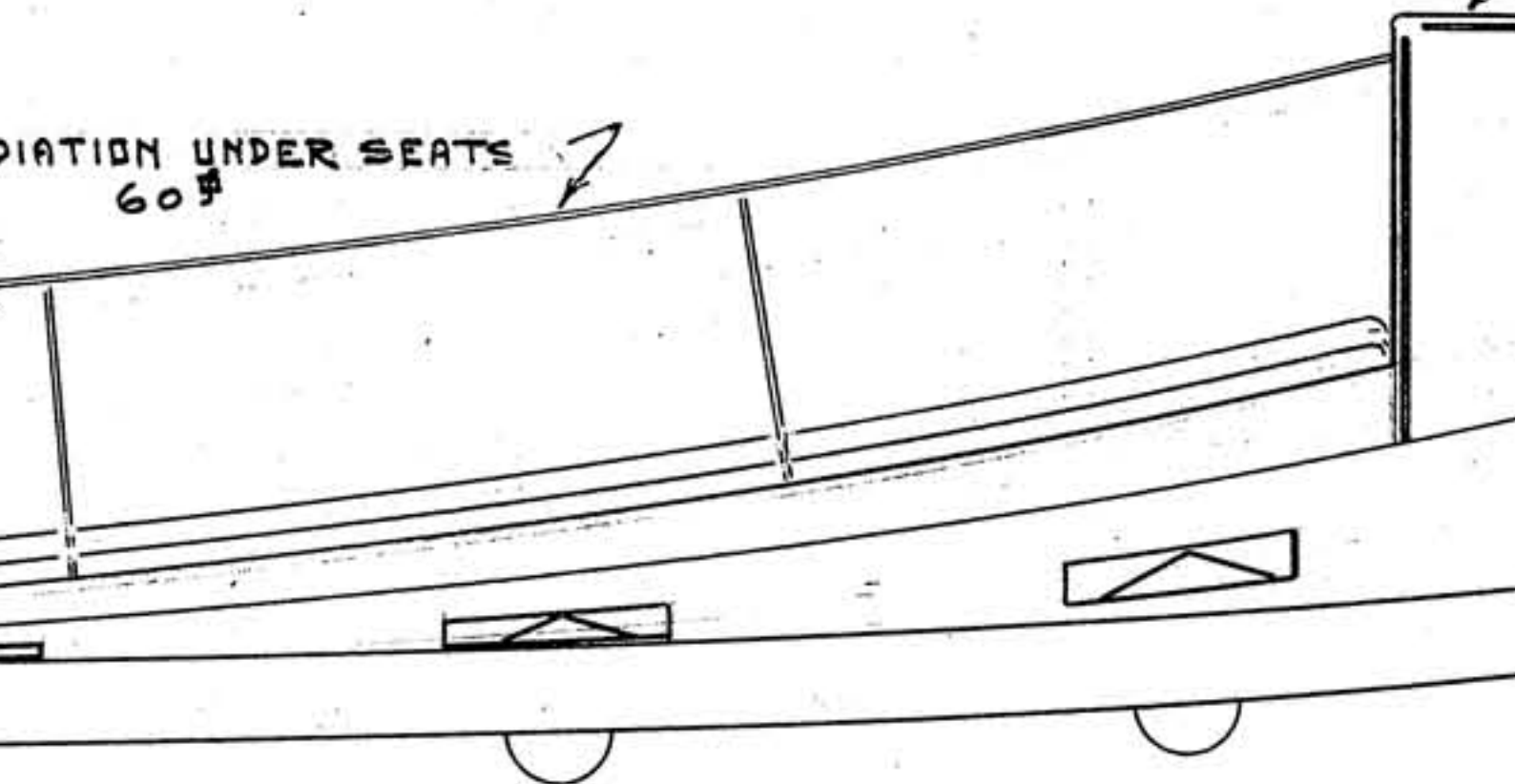
CHAPEL

PORTABLE  
ALTAR →

7

CUPBOARD FOR BOOKS  
PLATES ETC. →

VENTILATION UNDER SEATS  
60% →



UPHOLSTERED SETTEE  
BACK FORMED BY HINGED TUBULAR BERTH.

LOCKER

RAD 87

PADRE'S S.R.

DESK - 1 DRAWER

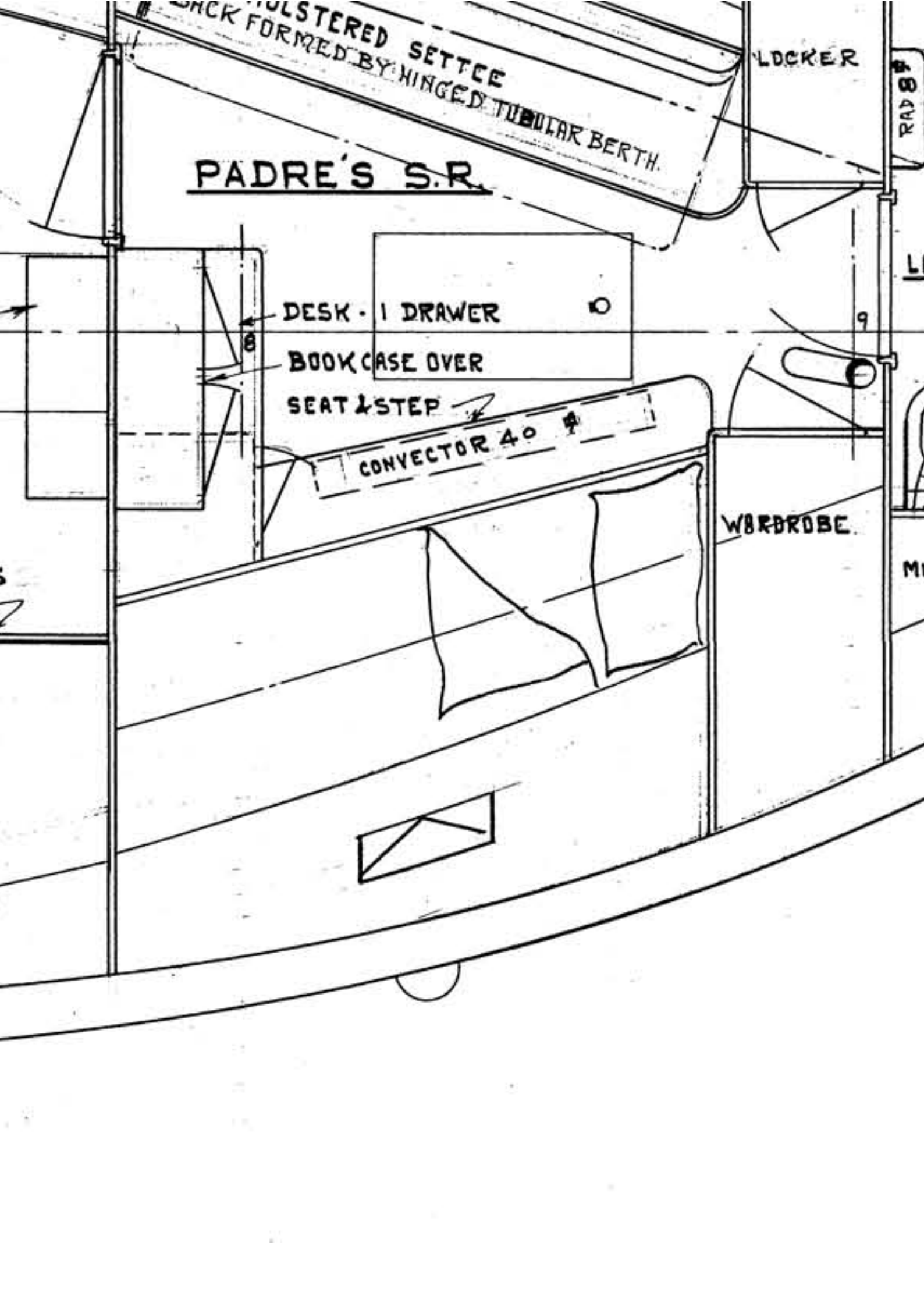
BOOK CASE OVER

SEAT & STEP

CONVECTOR 40

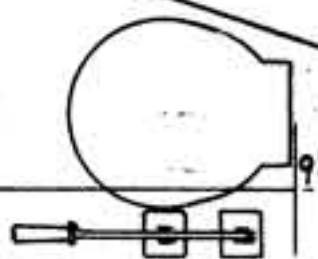
WARDROBE

M



RAD 87

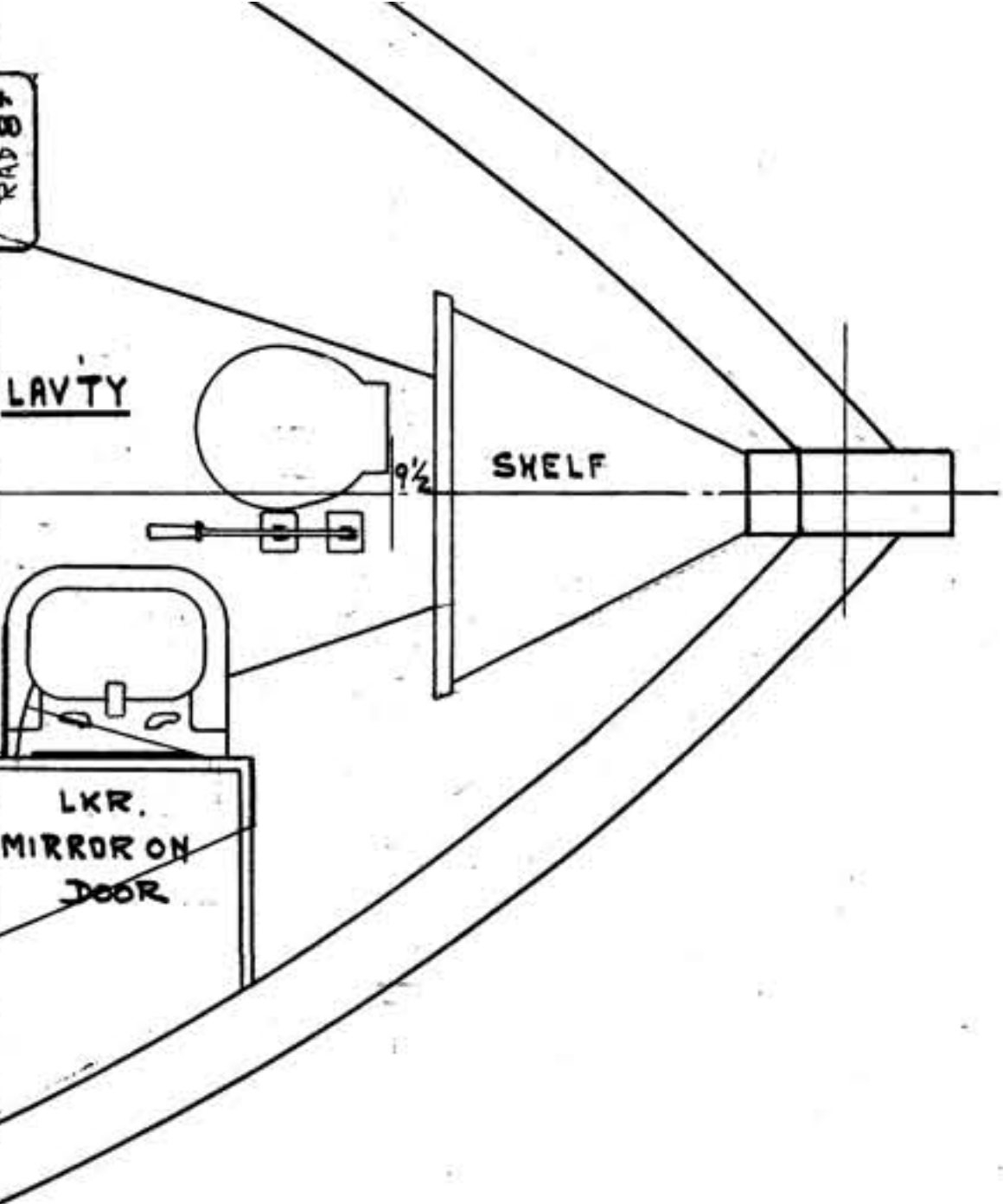
LAVTY



SHELF



LKR.  
MIRROR ON  
DOOR



# COLUMBIA MISSION

66'-5" X 16'-0"

## INBOARD PROFILE & H

$\frac{1}{2}'' = 1 \text{ FT.}$

ROBERT ALLAN BSC.  
NAVAL ARCHITECT  
VANCOUVER, B.C.

JULY 19, 1955

DWG. NO

BOAT

HOLD PLAN

10. 3-55-4

10. 3-55-4