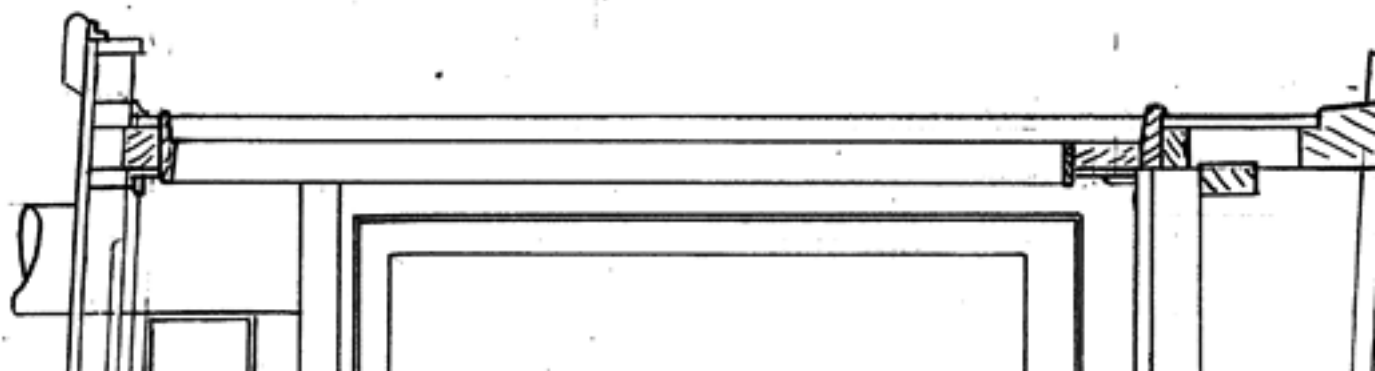
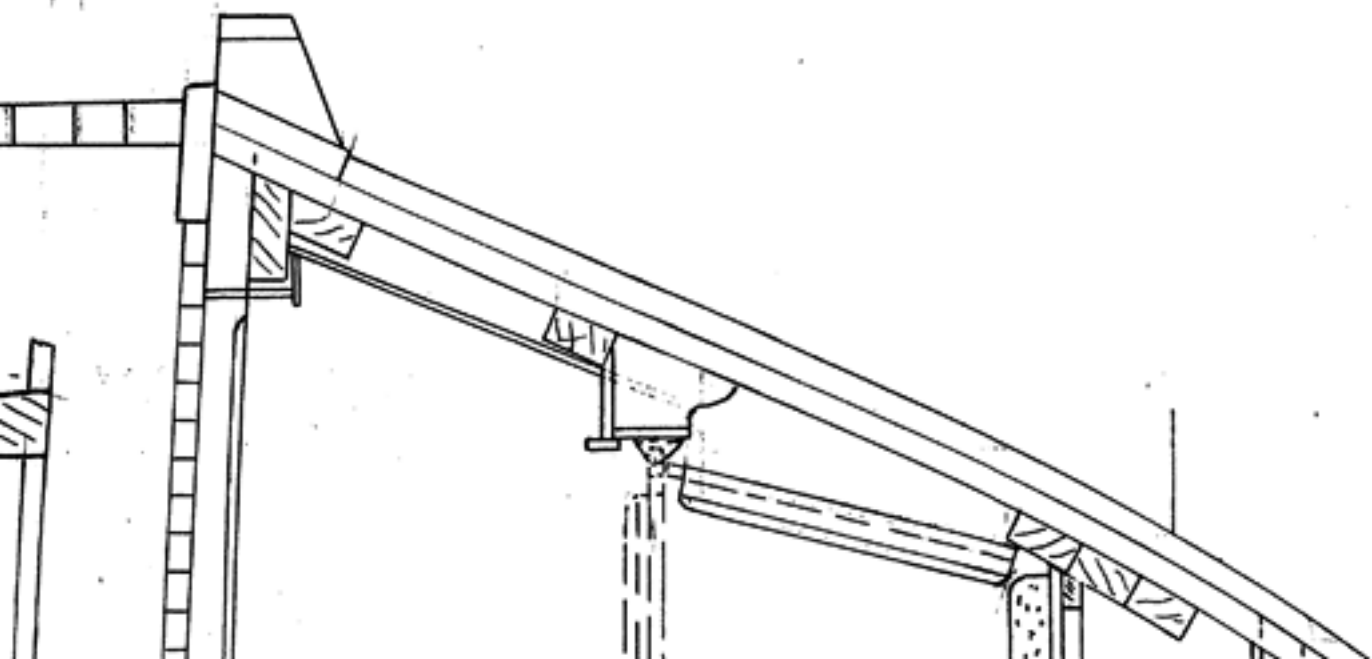


SECTION THRU WHEELHOUSE

LOOKING AFT





M.V. "COLUMBIA"

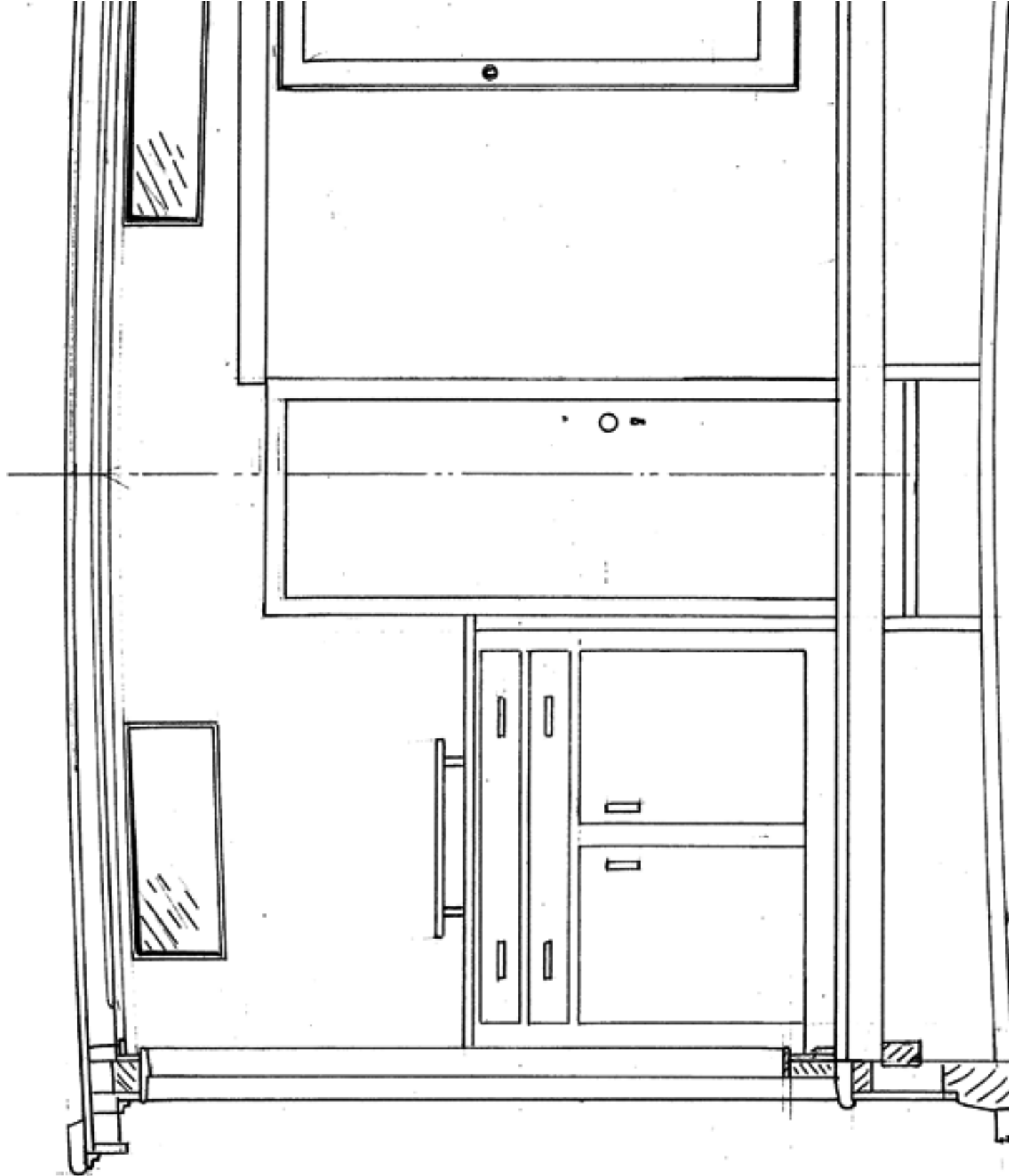
66'5" x 16'0" x 9'0"

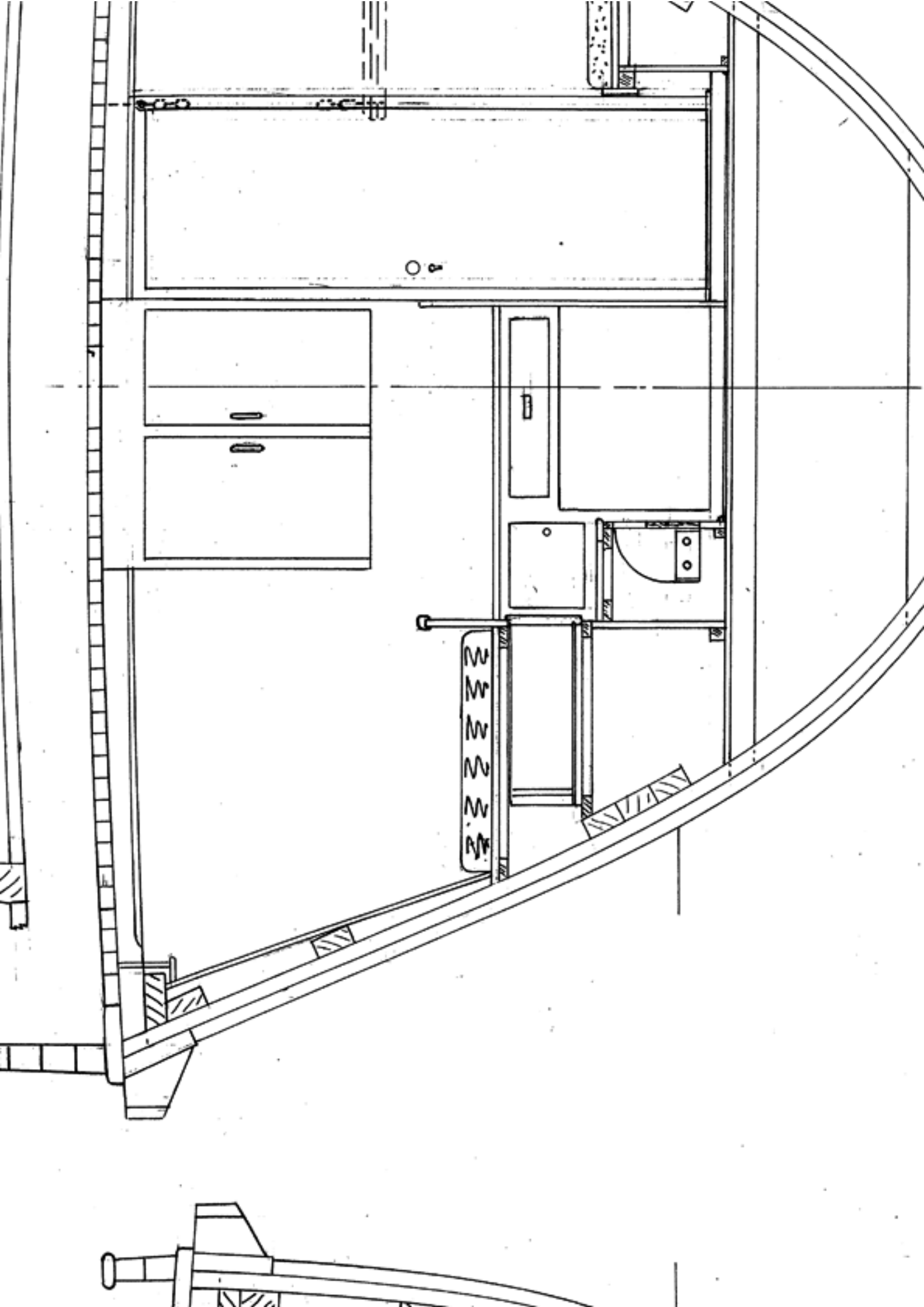
JOINER SECTIONS

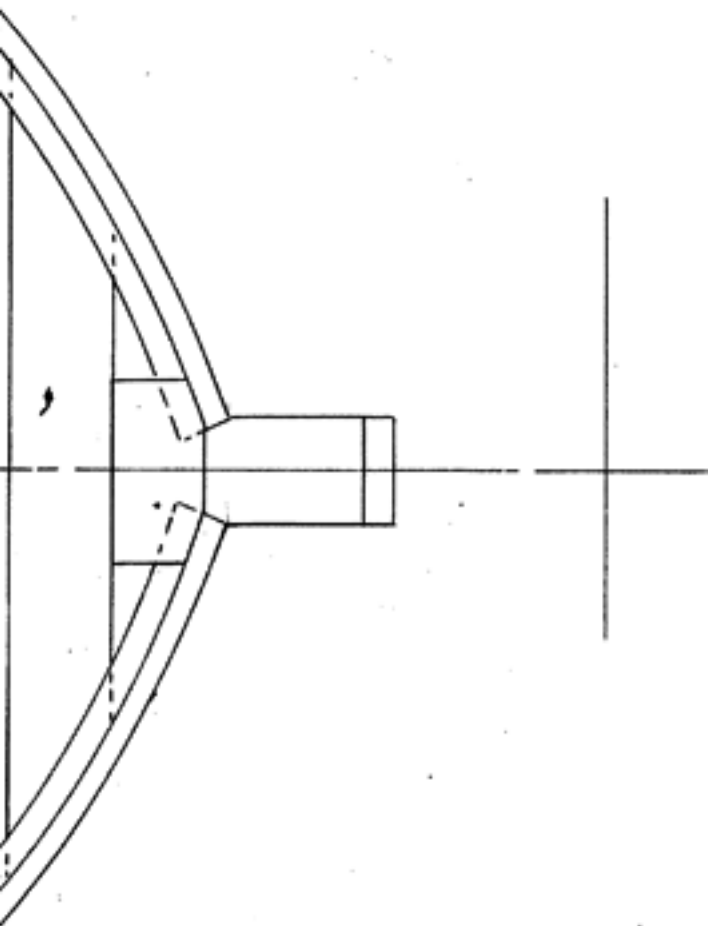
$\frac{3}{4}$ " = 1 FT

ROBERT ALLAN BSc
NAVAL ARCHITECT
VANCOUVER B.C.

DEC. 10. 1955 DWG NO 3.55.7

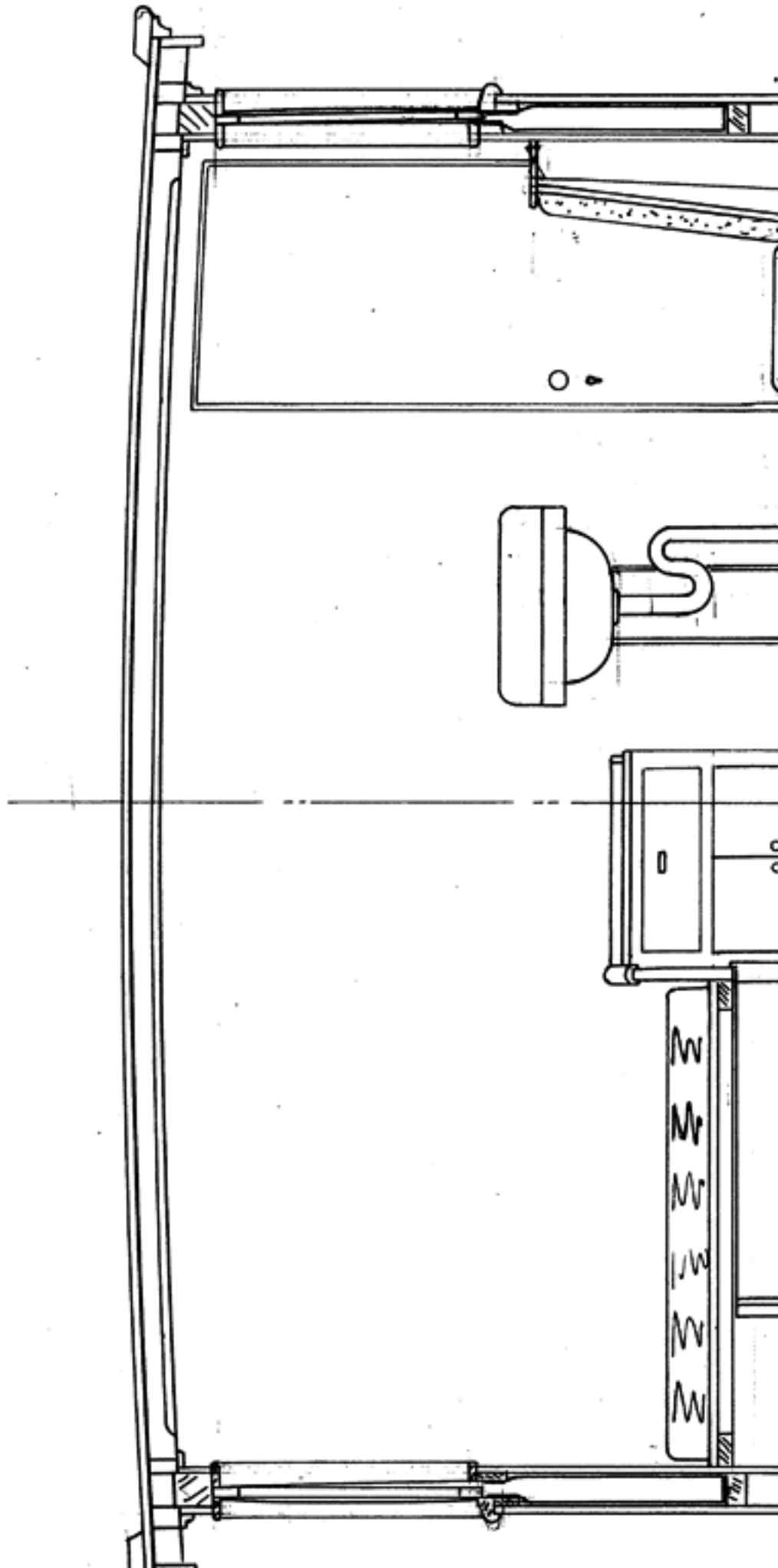


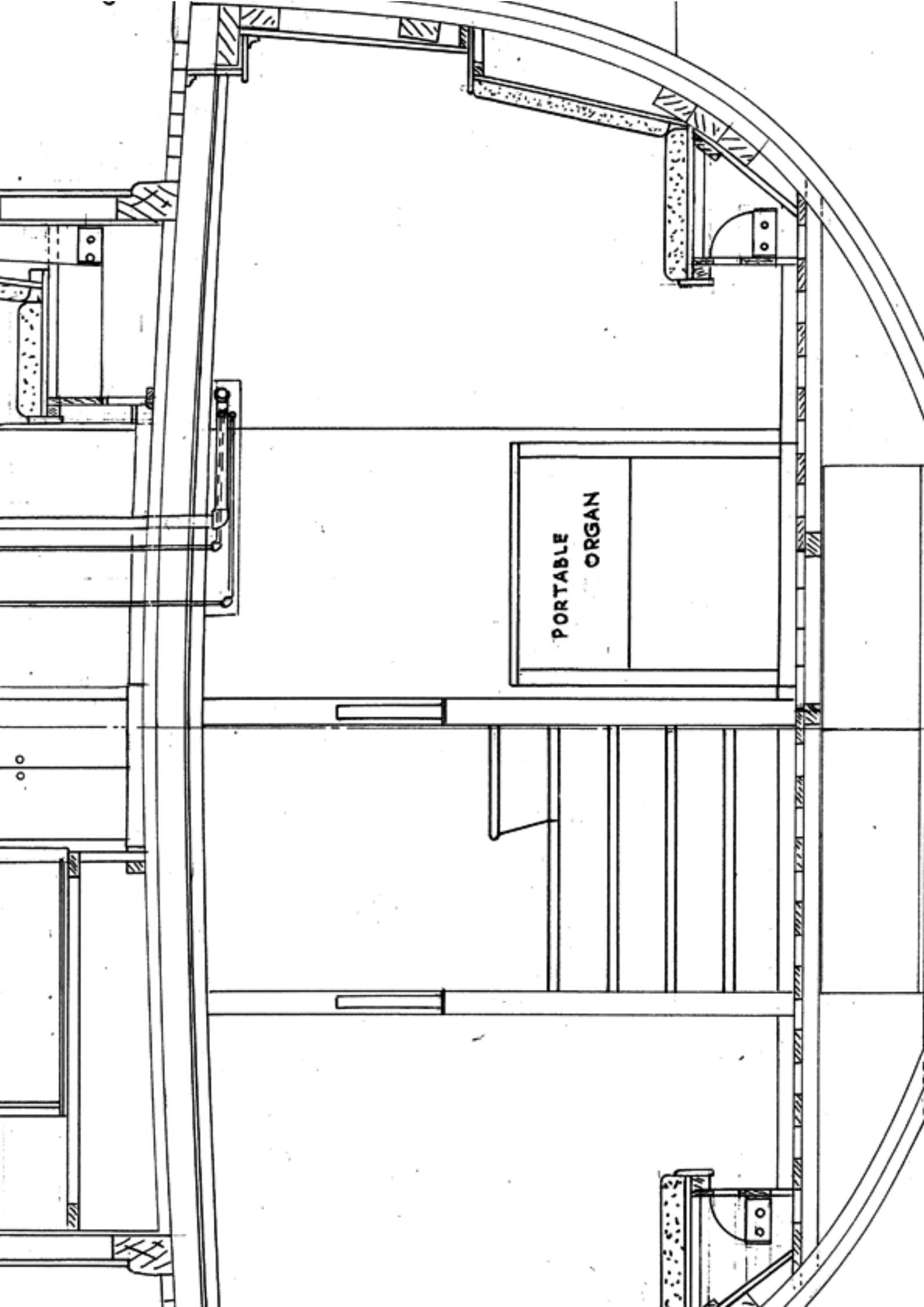




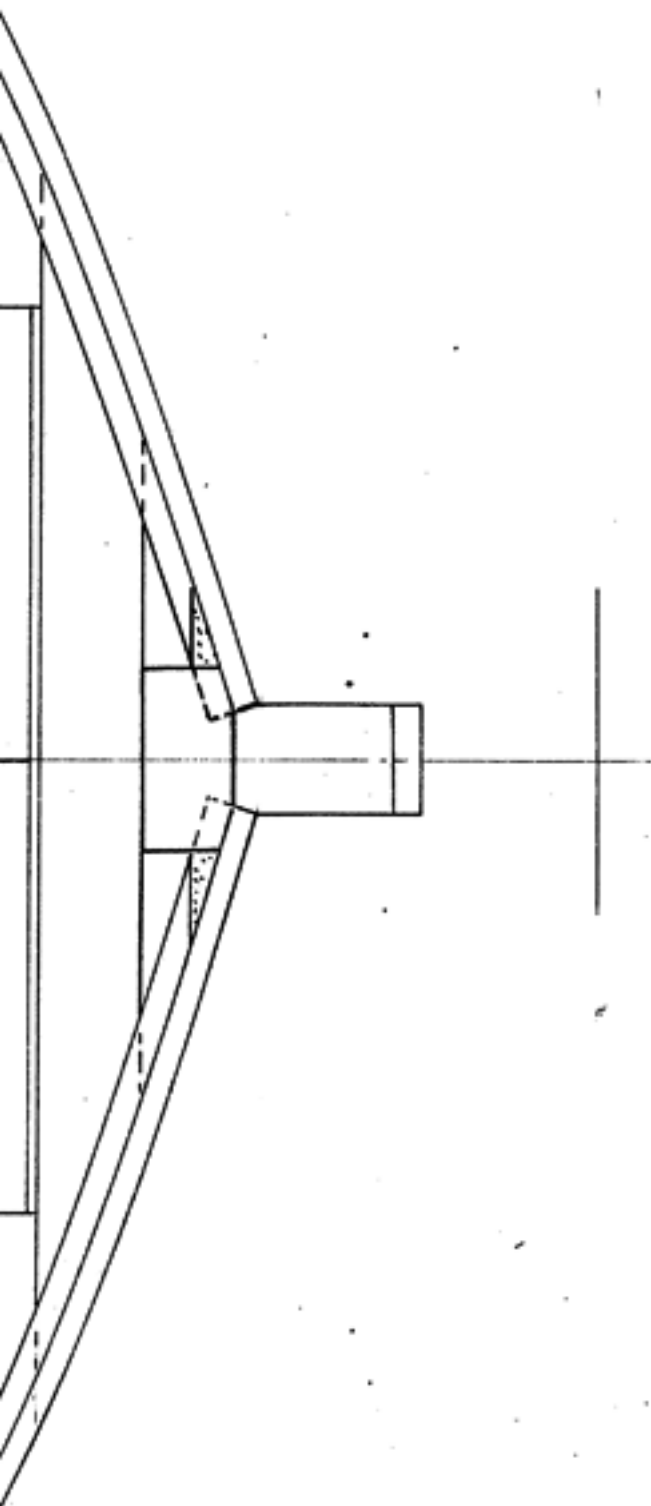
SECTION AT 8

LOOKING AFT



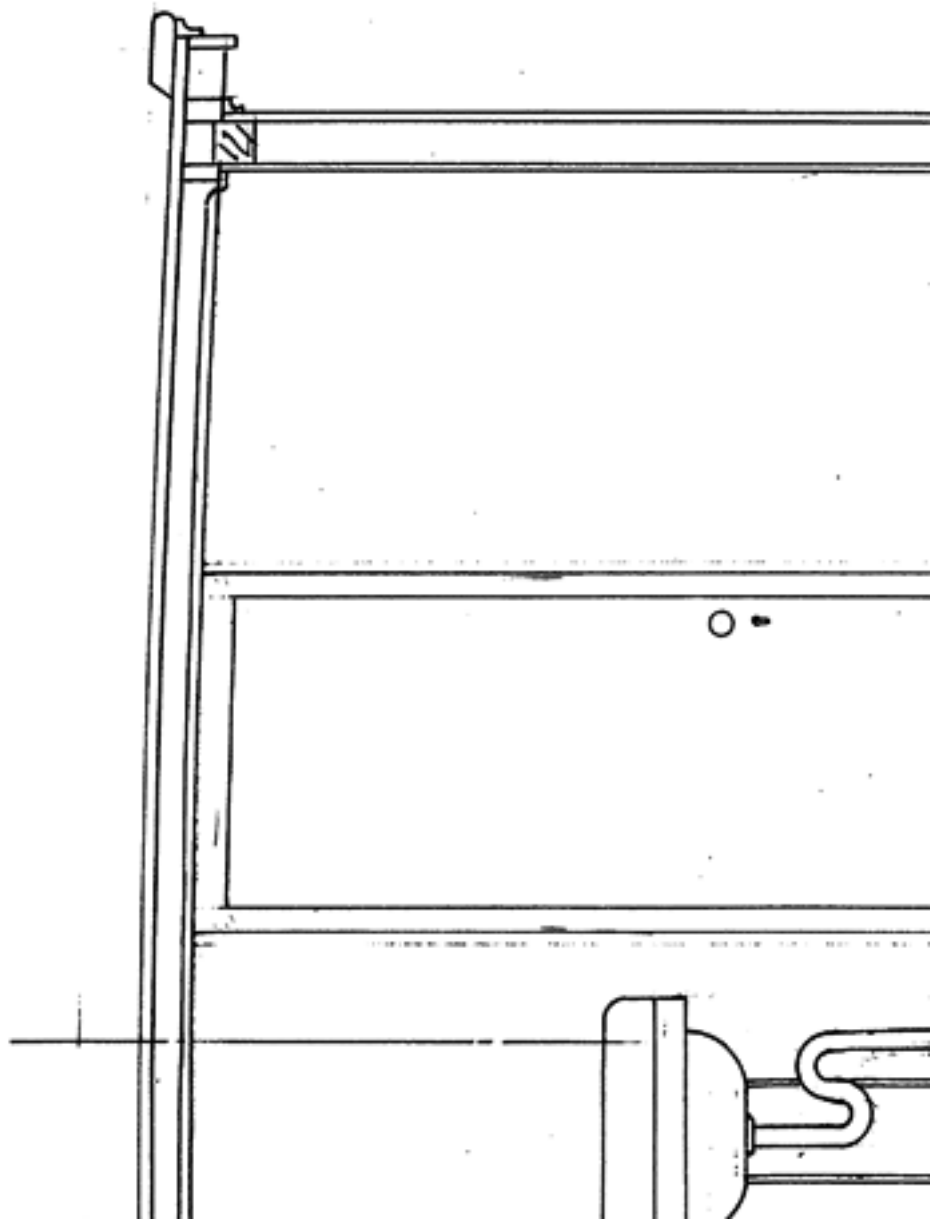
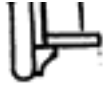


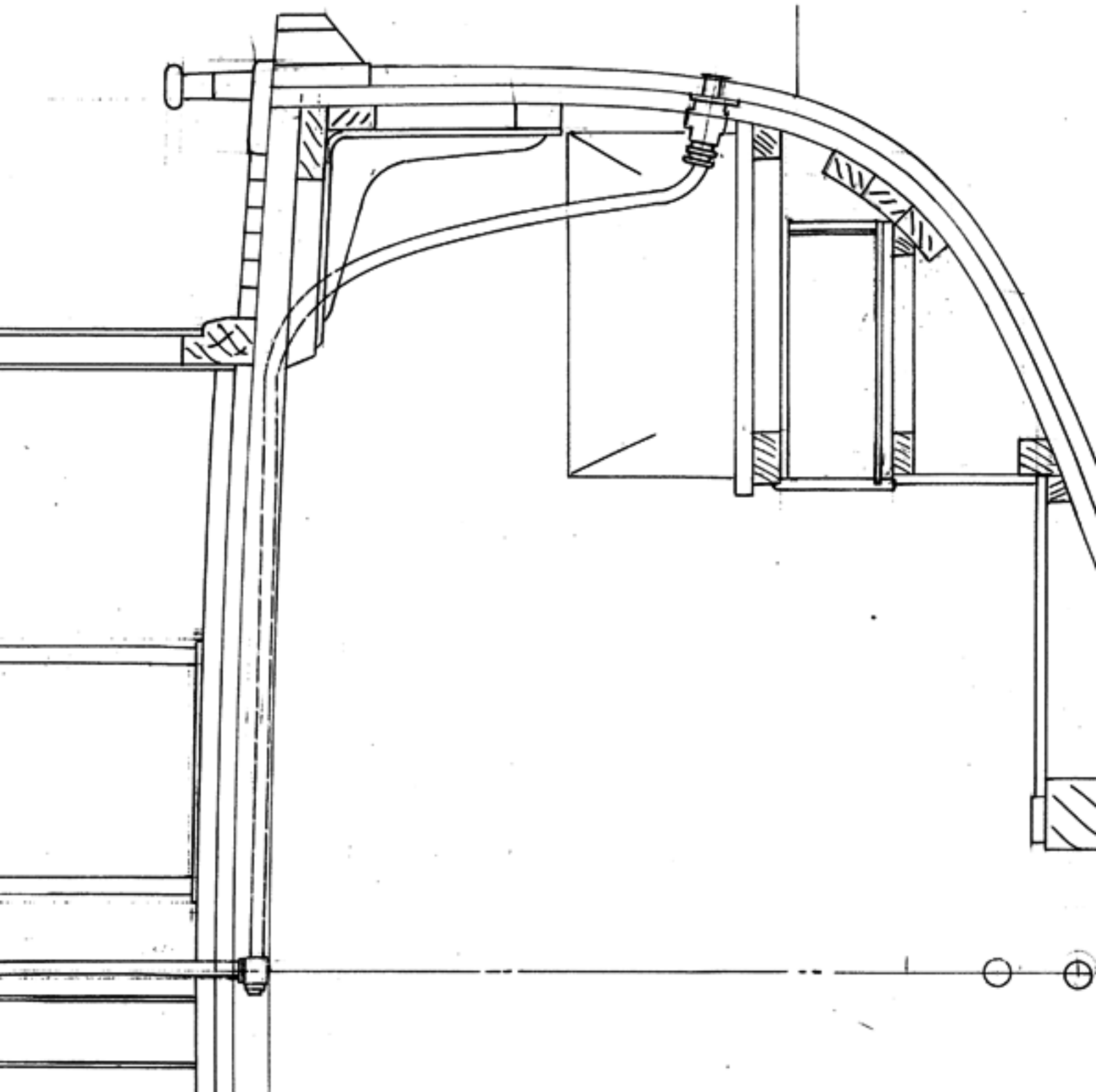
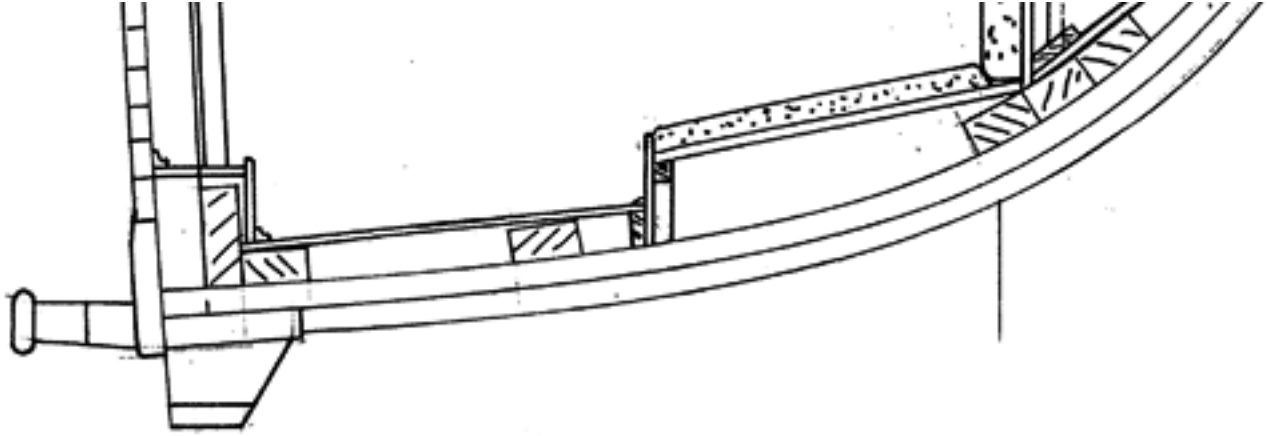
PORTABLE
ORGAN

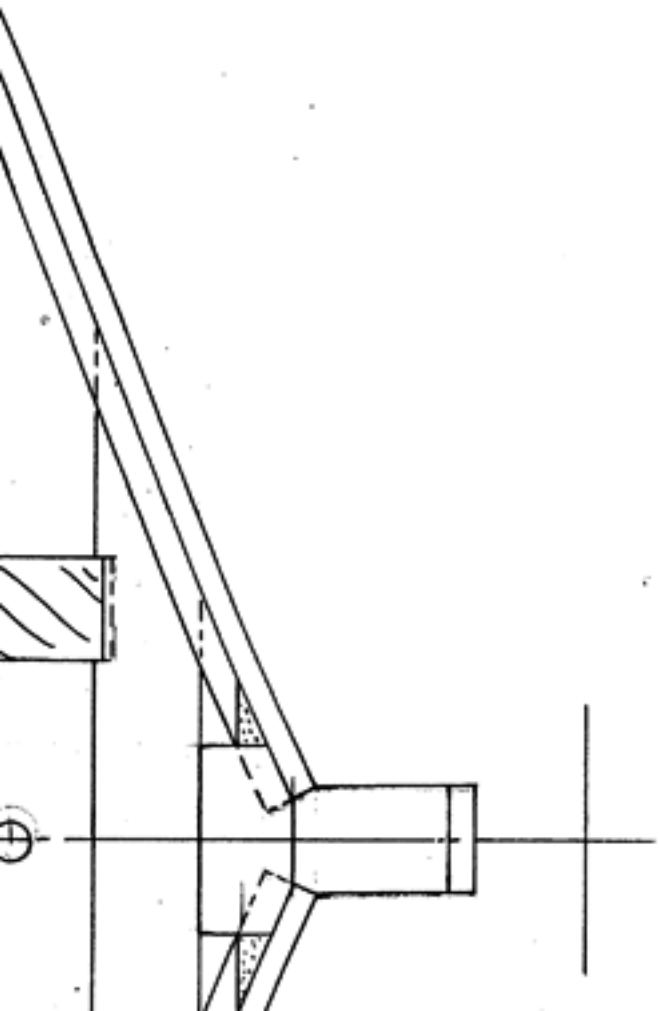


SECTION AT 6½

LOOKING AFT

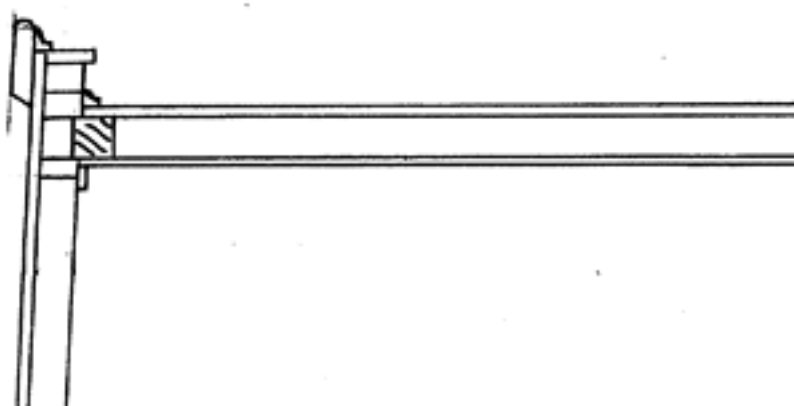
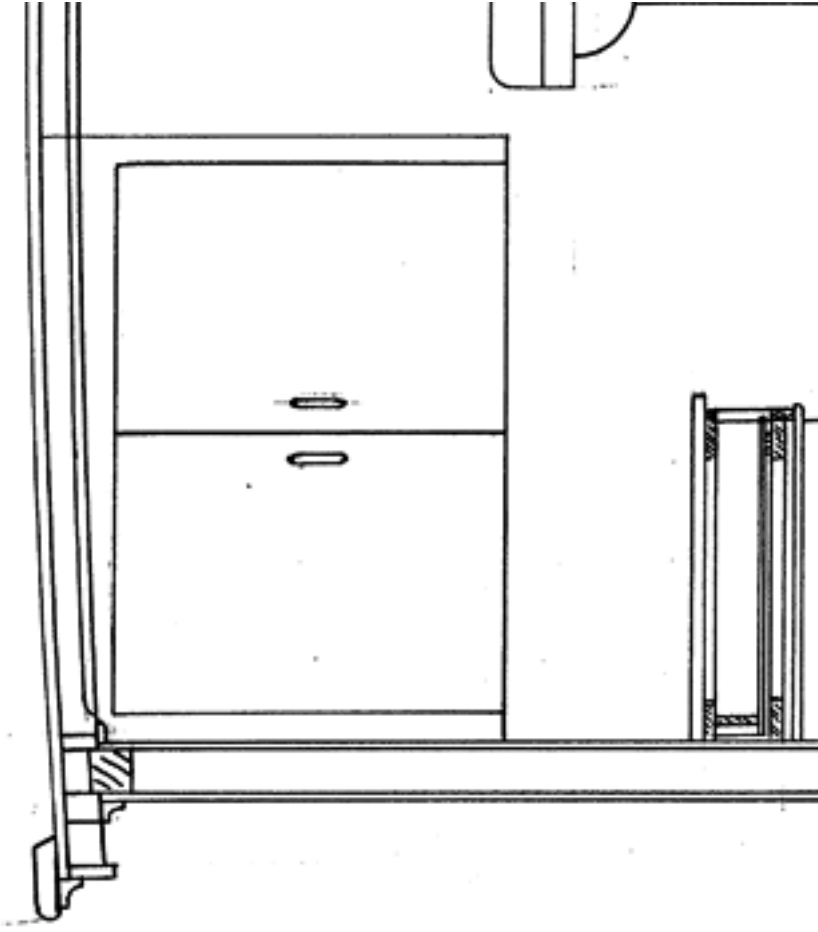


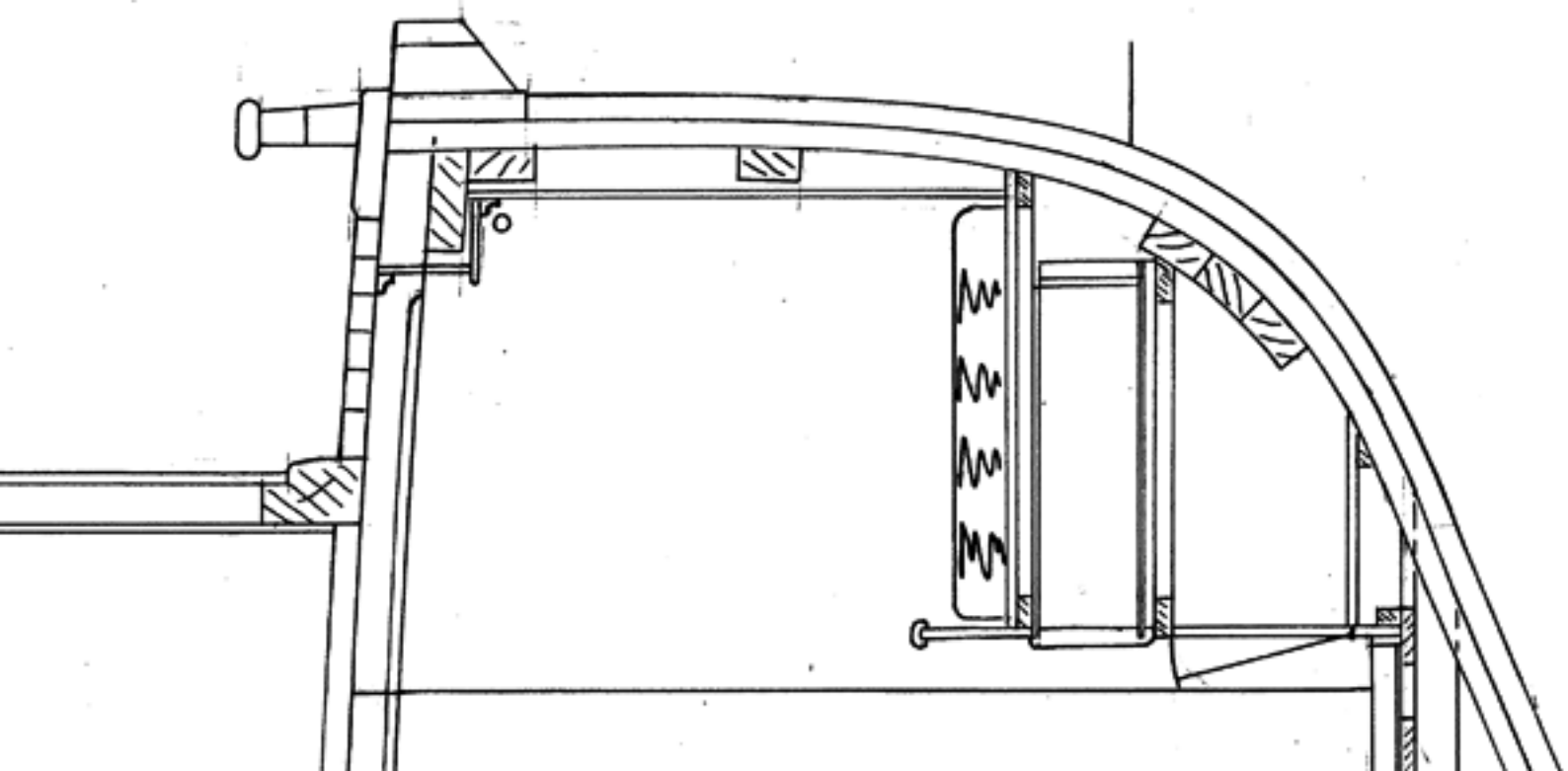
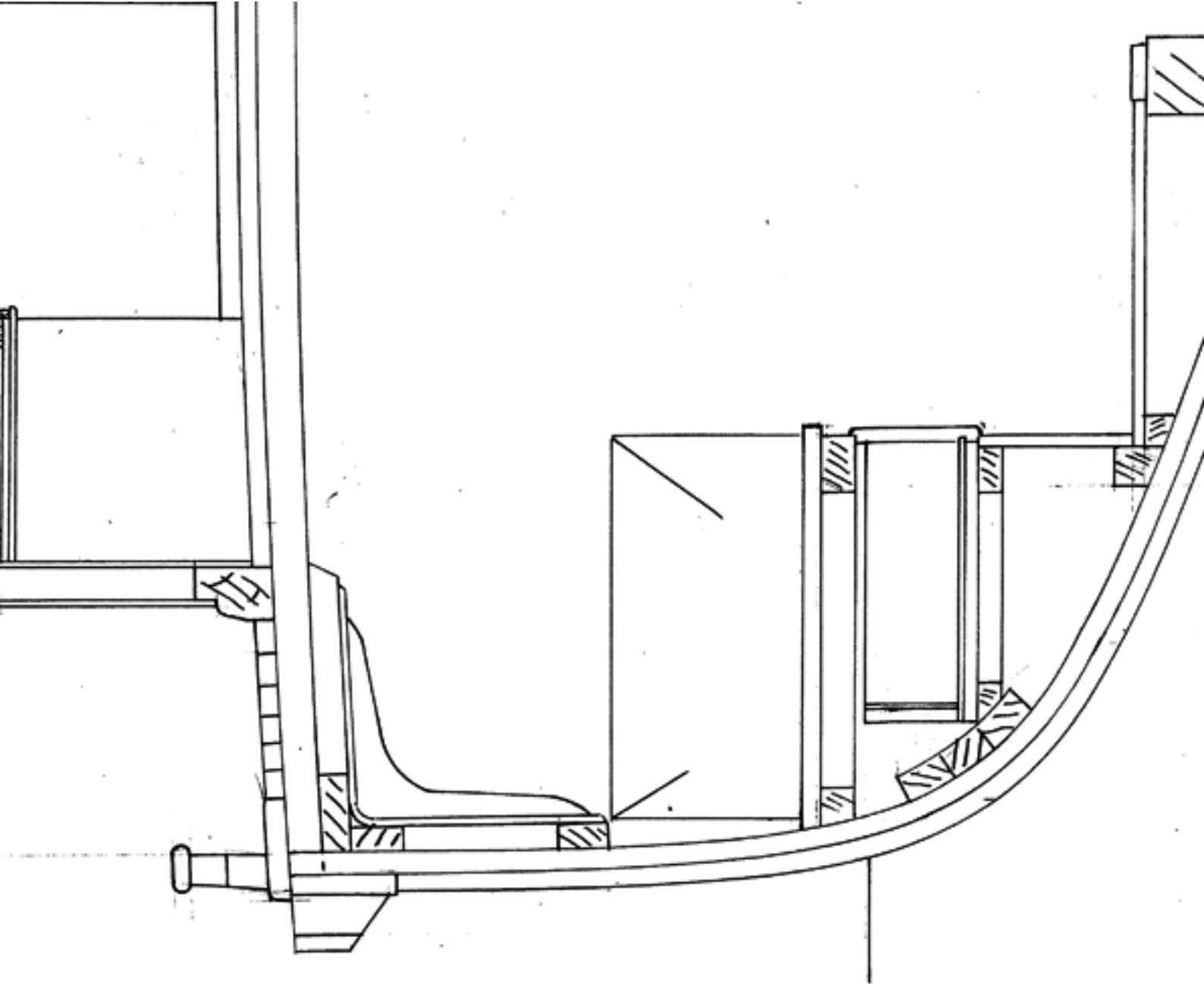


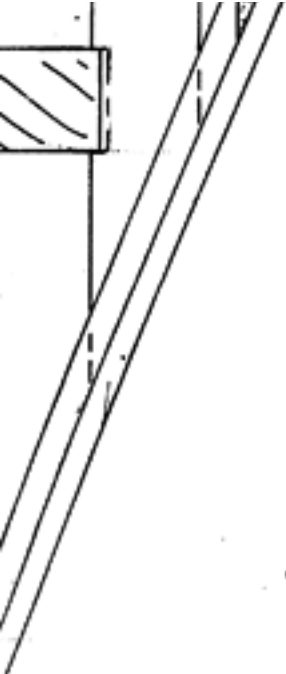


SECTION AT 4

LOOKING FORP

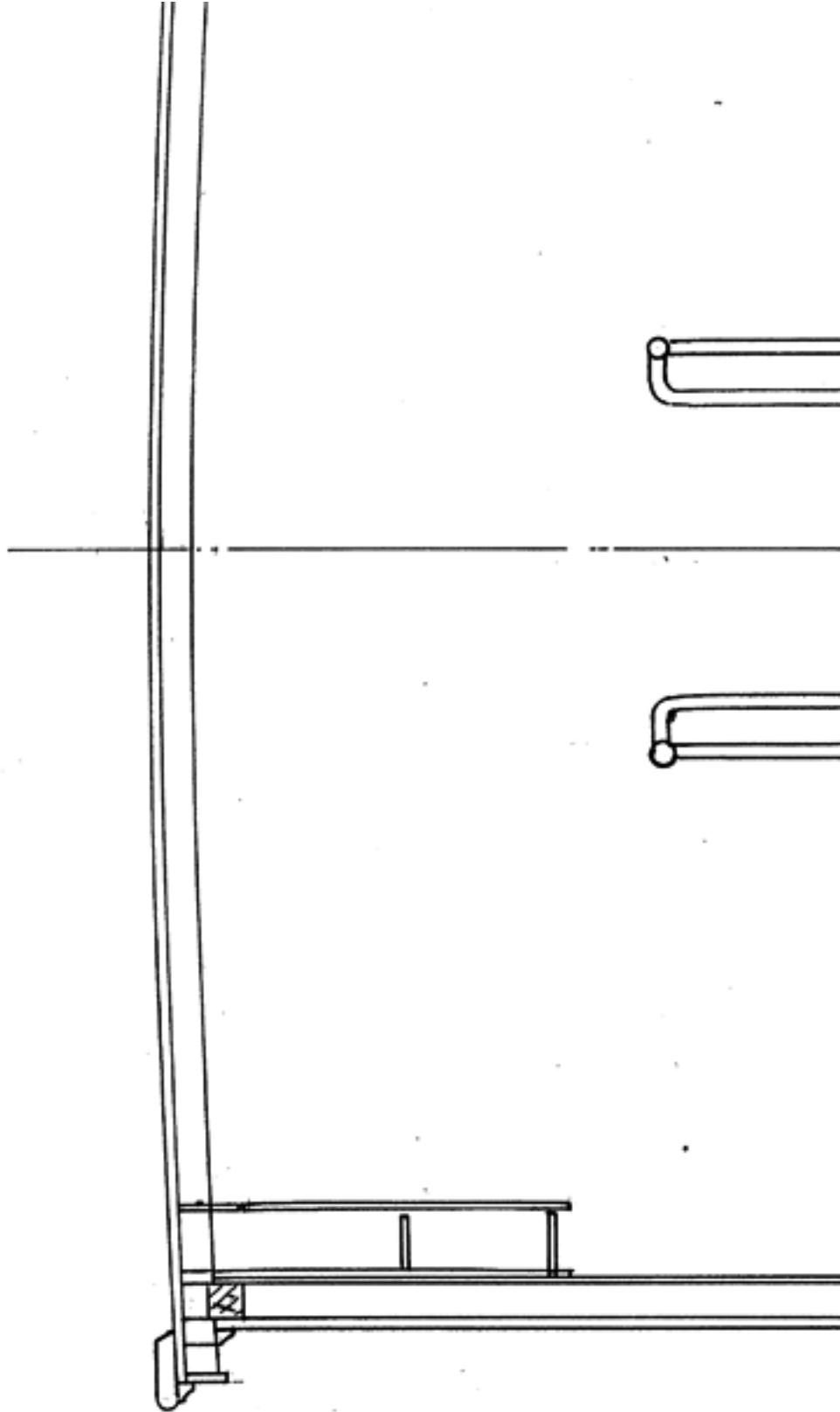


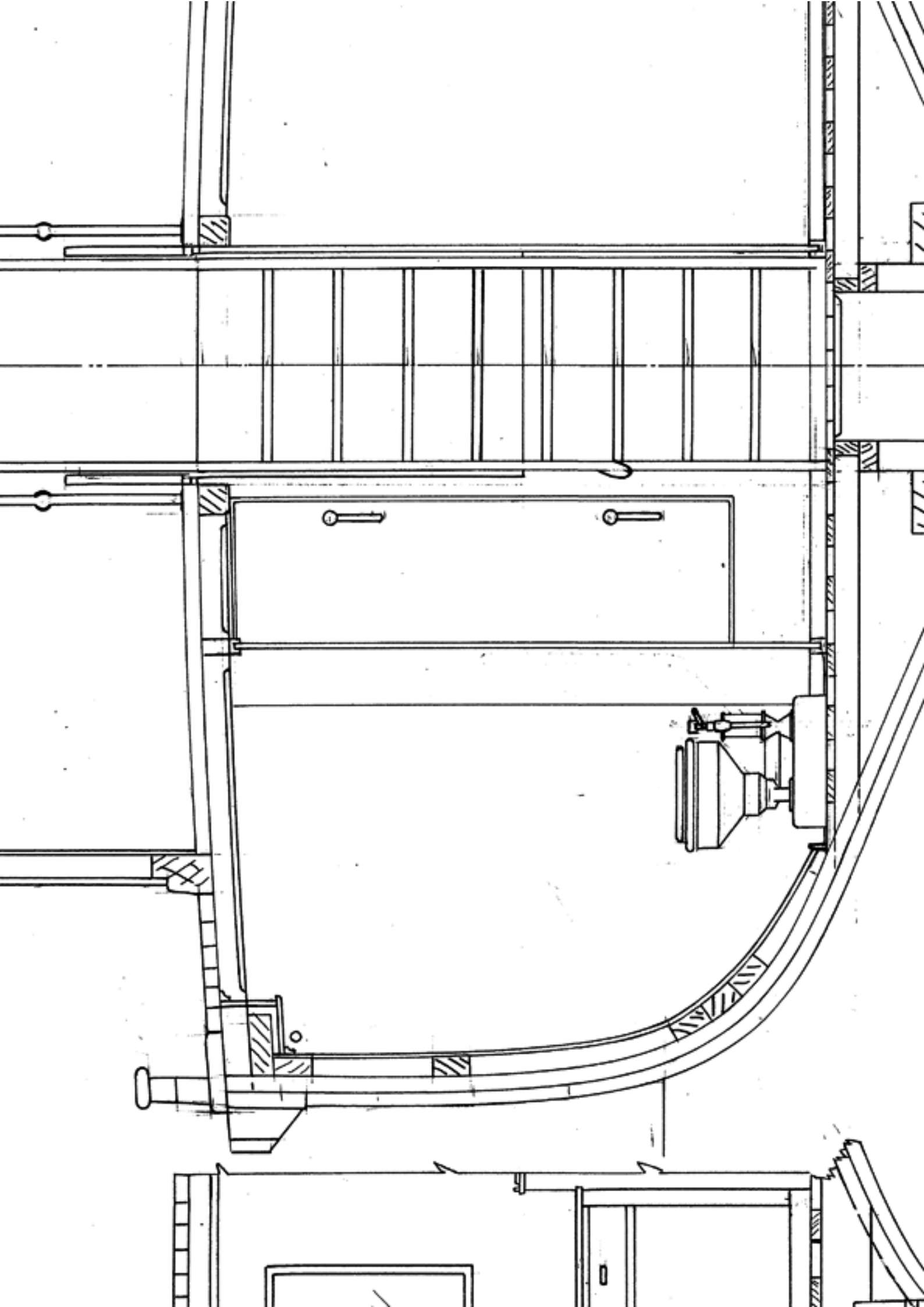


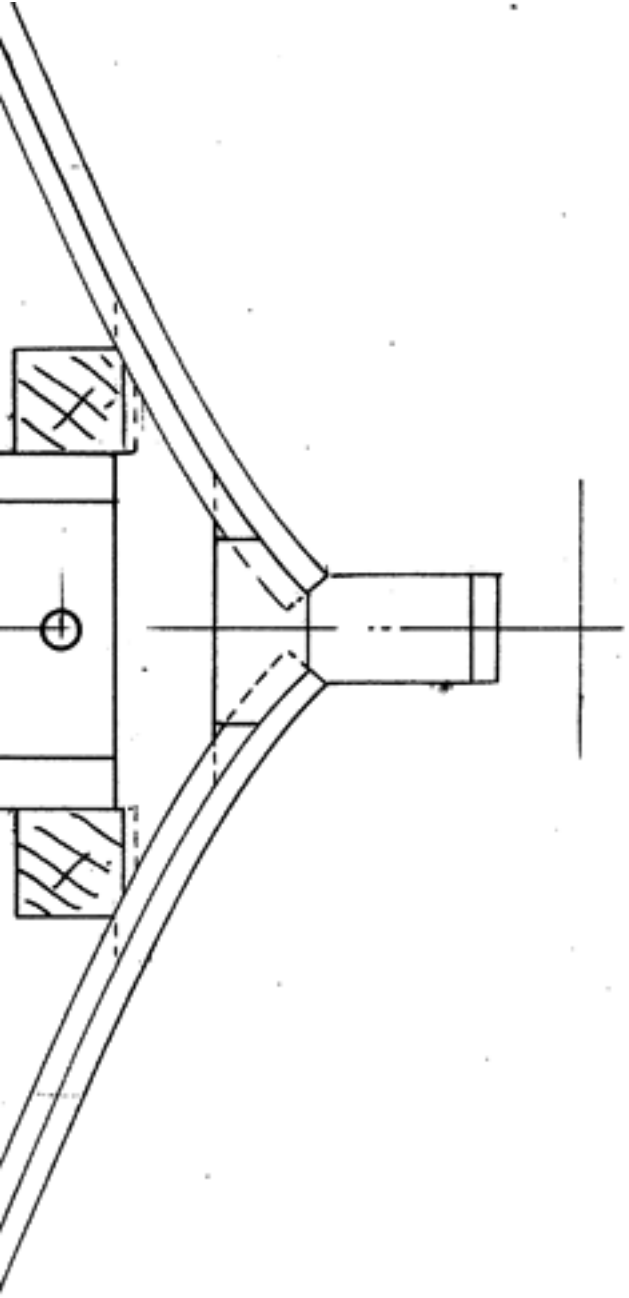


**NOTE: DRAWER FRONTS SOLID PHIL MAHOAG ANY
LEEBOARDS FIRPLY WITH MAHY. CONVEX MOULDING
LINING $\frac{1}{8}$ FIRPLY**

SEC
LC

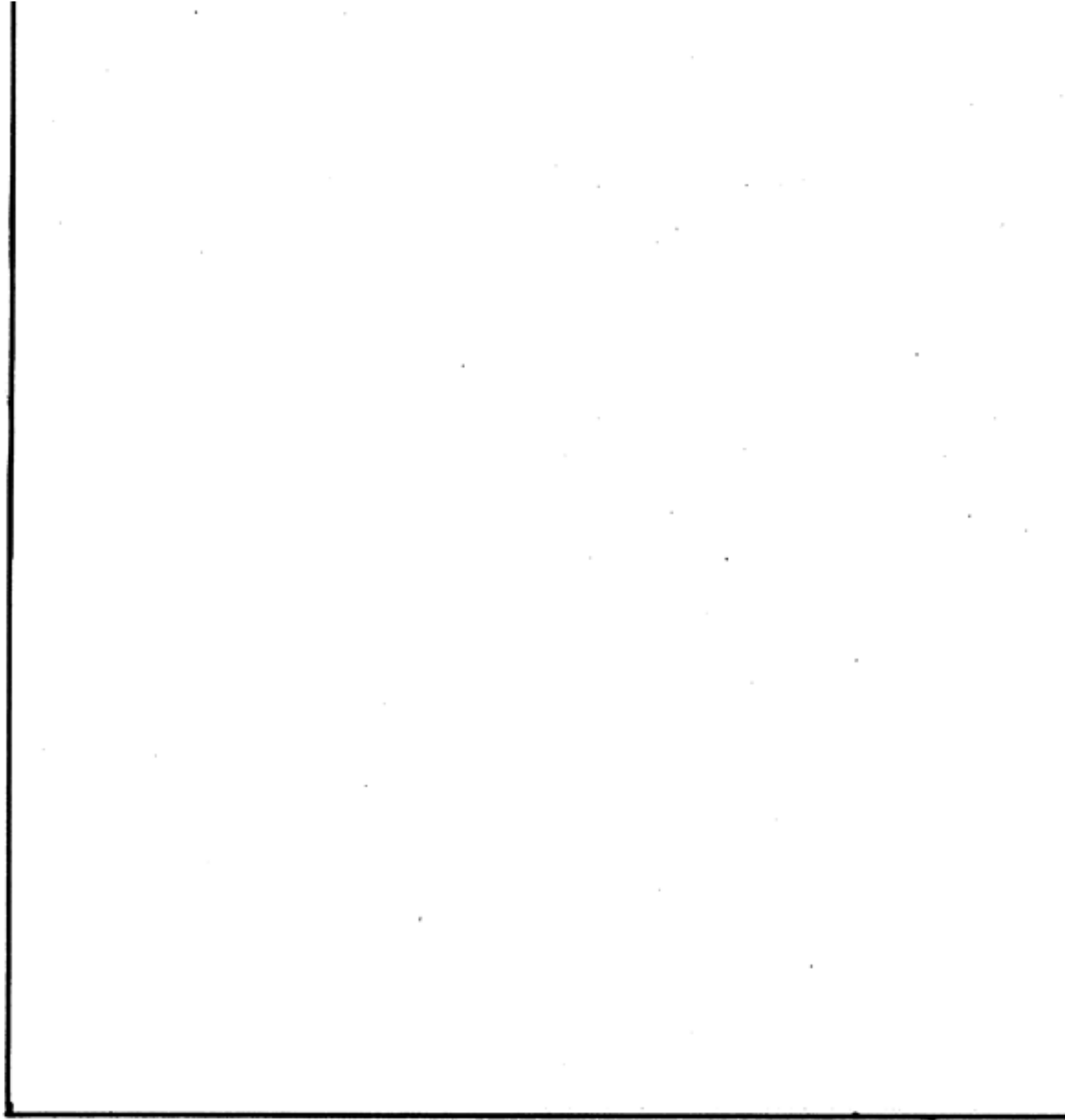


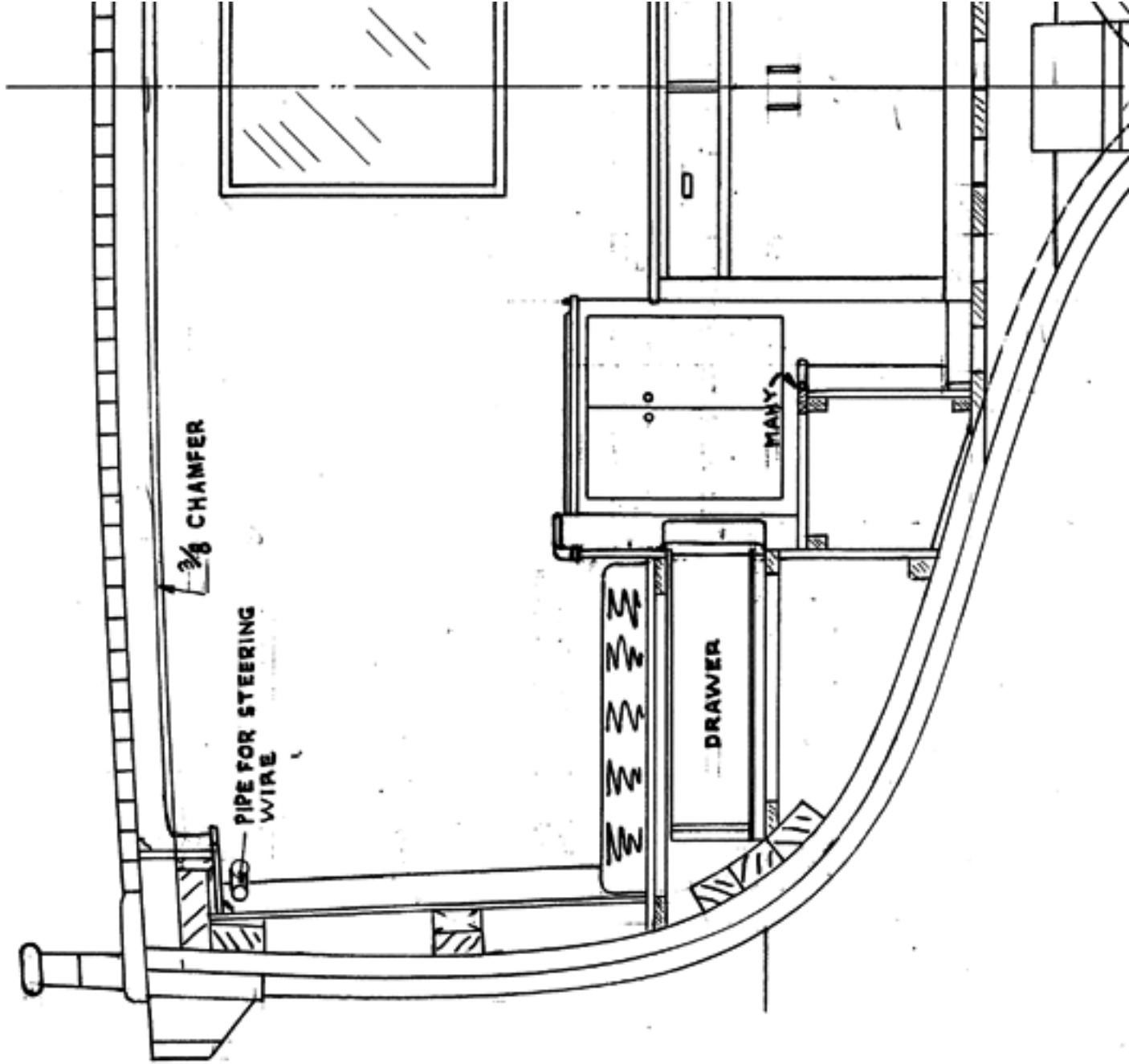


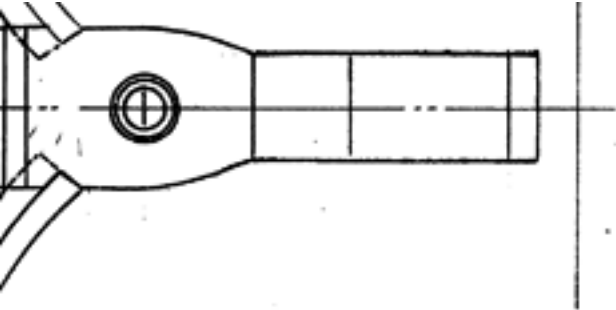


SECTION AT 3

LOOKING FOR P







SECTION AT 1½

LOOKING AFT