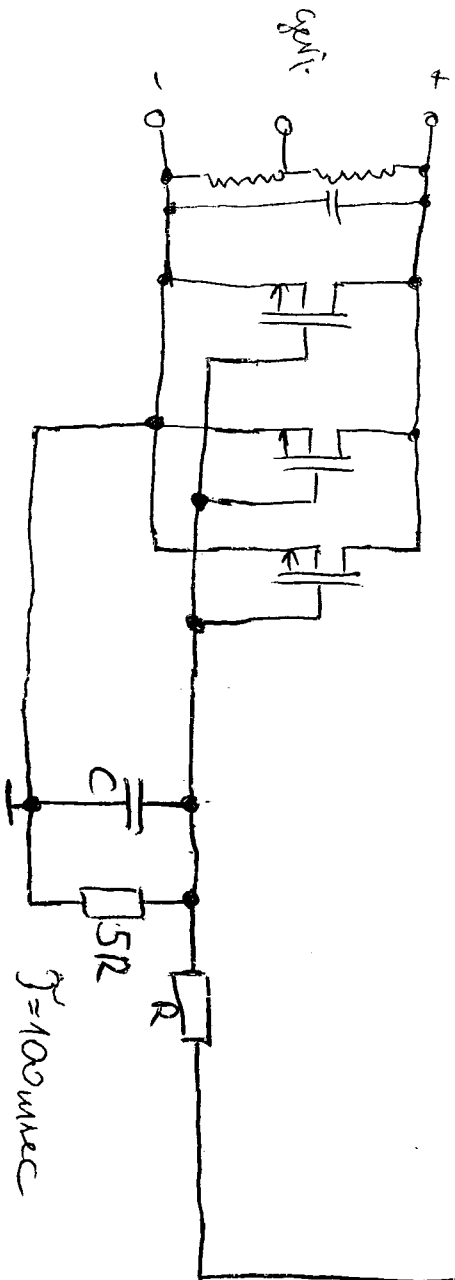


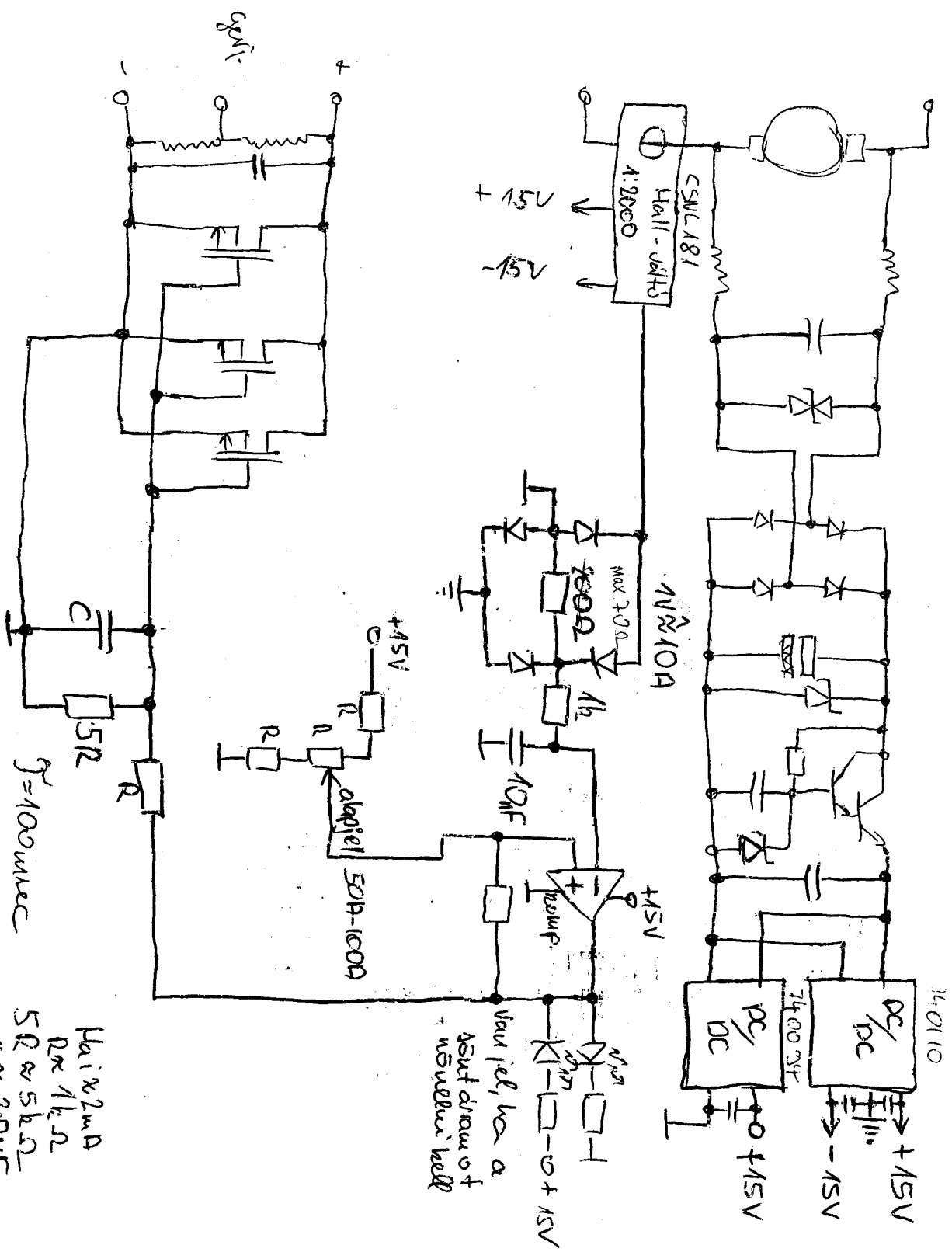
Varied, but a  
 about draw of  
 microamp level



$f = 100 \text{ wsec}$

Hall  $\approx 2 \text{ mA}$   
 $R \approx 1 \text{ k}\Omega$   
 $5R \approx 5 \text{ k}\Omega$   
 $C \approx 20 \text{ pF}$

3 watt  
 100A = 10V  
 $R = 64,6666 \Omega$



$H_{a1} \times 2 \mu D$   
 $R_2 \approx 1 k \Omega$   
 $5 R \approx 5 k \Omega$   
 $C \approx 20 \mu F$

$f = 100 \text{ wsec}$

$V_{out} \approx 14 \text{ V}$   
 $I_{out} \approx 10 \text{ mA}$   
 $\eta \approx 80\%$

$14 \text{ w A} + \text{res}$   
 $\approx 150 \text{ mA}$