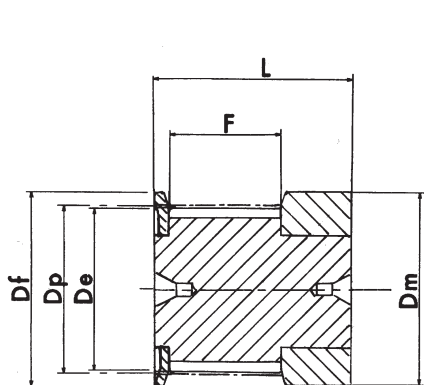
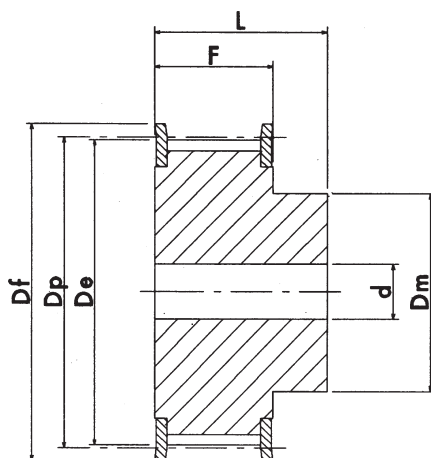


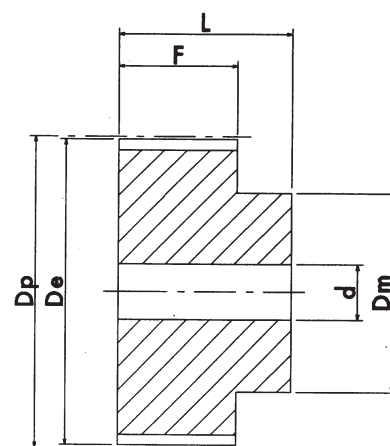
POWERGRIP® TOOTHED PULLEYS FOR SYNCHRONOUS BELTS



execution 0F



execution 1F

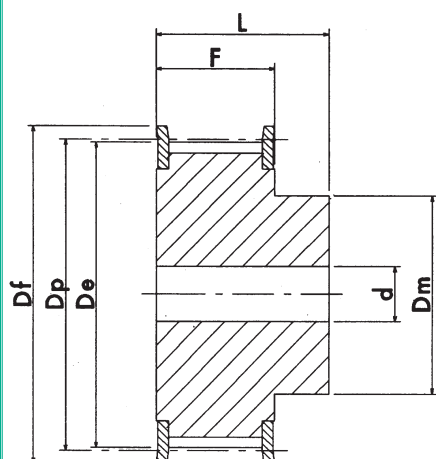


execution 2

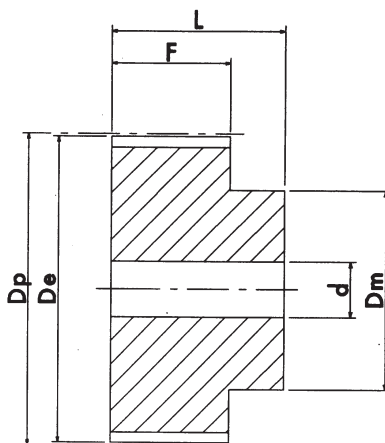
MXL 025 PITCH 0.080" (2.032 mm.)

| CHARACTERISTICS | TYPE | EXEC. | No. of TEETH | Dp PITCH LINE | De EXTERNAL | Df FLANGE | Dm HUB | F | L | d | FLANGE No. | | |
|-----------------|-------------|------------|----------------|------------------|----------------|--------------|-----------|-----|----|----|---------------|-----|---|
| ALUMINIUM | WITH FLANGE | 16 MXL 025 | 16 | 10.35 | 9.84 | 15 | 15 | 8.5 | 16 | - | 502 | | |
| | | 18 MXL 025 | 18 | 11.64 | 11.12 | 16 | 16 | 8.5 | 16 | - | 503 | | |
| | | 20 MXL 025 | 20 | 12.94 | 12.43 | 16 | 16 | 8.5 | 16 | - | 503 | | |
| | | 22 MXL 025 | 1F | 22 | 14.23 | 13.72 | 17 | 10 | 11 | 16 | 3 | 504 | |
| | | 24 MXL 025 | 1F | 24 | 15.52 | 15.01 | 20 | 10 | 11 | 16 | 3 | 505 | |
| | | 28 MXL 025 | 1F | 28 | 18.11 | 17.60 | 25 | 11 | 11 | 16 | 3 | 506 | |
| | | 30 MXL 025 | 1F | 30 | 19.40 | 18.90 | 25 | 12 | 11 | 16 | 4 | 506 | |
| | | 32 MXL 025 | 1F | 32 | 20.70 | 20.19 | 26 | 14 | 11 | 16 | 4 | 507 | |
| | | 36 MXL 025 | 1F | 36 | 23.29 | 22.78 | 28 | 16 | 11 | 16 | 4 | 508 | |
| | | 40 MXL 025 | 1F | 40 | 25.87 | 25.37 | 32 | 18 | 11 | 16 | 4 | 509 | |
| | | 42 MXL 025 | 1F | 42 | 27.17 | 26.67 | 32 | 18 | 11 | 16 | 5 | 509 | |
| | | 44 MXL 025 | 1F | 44 | 28.46 | 27.95 | 36 | 18 | 11 | 16 | 5 | 510 | |
| | | ALUMINIUM | WITHOUT FLANGE | 48 MXL 025 | 2 | 31.05 | 30.54 | - | 20 | 11 | 16 | 5 | - |
| | | | | 60 MXL 025 | 2 | 38.81 | 38.30 | - | 24 | 11 | 16 | 5 | - |
| 72 MXL 025 | 2 | | | 46.57 | 46.06 | - | 25 | 11 | 16 | 6 | - | | |

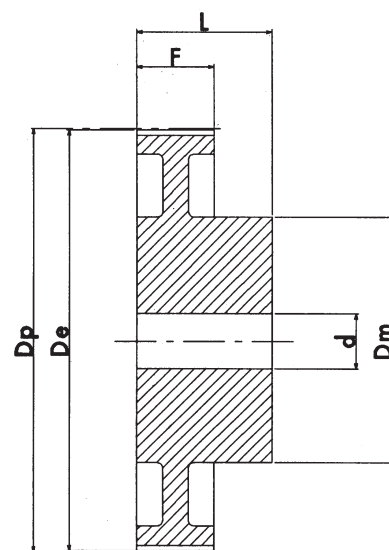
POWERGRIP® TOOTHED PULLEYS FOR SYNCHRONOUS BELTS



execution 1F



execution 2

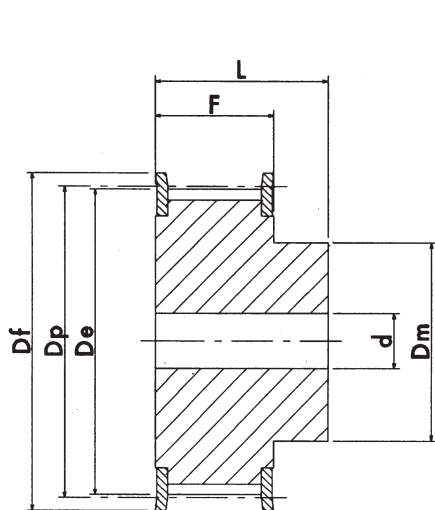


execution 3

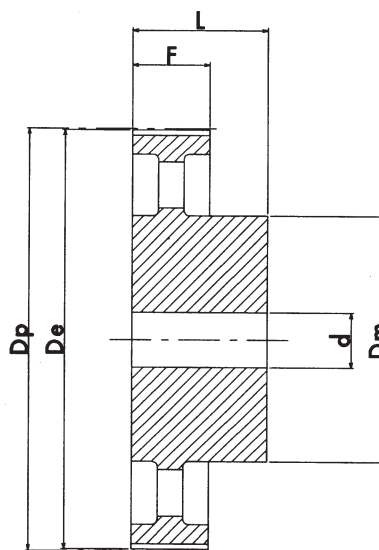
XL 037 PITCH 1/5" (5.08 mm.)

| CHARACTERISTICS | TYPE | EXEC. | No. of TEETH | Dp PITCH LINE | De EXTERNAL | Df FLANGE | Dm HUB | F | L | d | FLANGE No. | |
|-----------------|----------------|-----------|--------------|---------------|-------------|-----------|--------|------|------|----|------------|----|
| STEEL/ALUMINIUM | WITH FLANGE | 10 XL 037 | 10 | 16.17 | 15.66 | 23.0 | 9.5 | 14.3 | 20 | - | 1 | |
| | | 11 XL 037 | 11 | 17.79 | 17.28 | 23.0 | 9.5 | 14.3 | 20 | - | 1 | |
| | | 12 XL 037 | 12 | 19.40 | 18.90 | 25.0 | 10 | 14.3 | 20 | - | 2 | |
| | | 13 XL 037 | 13 | 21.02 | 20.51 | 25.0 | 10 | 14.3 | 20 | - | 2 | |
| | | 14 XL 037 | 14 | 22.64 | 22.13 | 28.0 | 15 | 14.3 | 20 | - | 4 | |
| | | 15 XL 037 | 15 | 24.26 | 23.75 | 28.0 | 15 | 14.3 | 20 | - | 4 | |
| | | 16 XL 037 | 16 | 25.87 | 25.36 | 32.0 | 16 | 14.3 | 20 | - | 5 | |
| | | 17 XL 037 | 17 | 27.49 | 26.98 | 32.0 | 20 | 14.3 | 20 | - | 6 | |
| | | 18 XL 037 | 18 | 29.11 | 28.60 | 35.0 | 20 | 14.3 | 20 | - | 7 | |
| | | 19 XL 037 | 19 | 30.72 | 30.22 | 35.0 | 20 | 14.3 | 22 | - | 7 | |
| | | 20 XL 037 | 1F | 20 | 32.34 | 31.83 | 38.0 | 23.5 | 14.3 | 22 | - | 9 |
| | | 21 XL 037 | 1F | 21 | 33.96 | 33.45 | 38.0 | 23.5 | 14.3 | 22 | - | 9 |
| | | 22 XL 037 | 1F | 22 | 35.57 | 35.07 | 41.0 | 25 | 14.3 | 22 | 6 | 10 |
| | | 24 XL 037 | 1F | 24 | 38.81 | 38.30 | 44.0 | 30 | 14.3 | 22 | 6 | 12 |
| | | 26 XL 037 | 1F | 26 | 42.04 | 41.53 | 48.0 | 30 | 14.3 | 22 | 8 | 11 |
| | | 27 XL 037 | 1F | 27 | 43.66 | 43.15 | 48.0 | 30 | 14.3 | 22 | 8 | 11 |
| | | 28 XL 037 | 1F | 28 | 45.28 | 44.77 | 51.0 | 34 | 14.3 | 22 | 8 | 16 |
| | | 30 XL 037 | 1F | 30 | 48.51 | 48.00 | 54.0 | 38 | 14.3 | 22 | 8 | 18 |
| | | 32 XL 037 | 1F | 32 | 51.74 | 51.24 | 57.0 | 38 | 14.3 | 25 | 8 | 20 |
| 34 XL 037 | 1F | 34 | 54.98 | 54.47 | 61.0 | 38 | 14.3 | 25 | 8 | 22 | | |
| 35 XL 037 | 1F | 35 | 56.60 | 56.09 | 61.0 | 38 | 14.3 | 25 | 8 | 22 | | |
| ALUMINIUM | WITHOUT FLANGE | 36 XL 037 | 2 | 36 | 58.21 | 57.70 | - | 45 | 14.3 | 25 | 8 | - |
| | | 38 XL 037 | 2 | 38 | 61.45 | 60.94 | - | 45 | 14.3 | 25 | 8 | - |
| | | 40 XL 037 | 2 | 40 | 64.68 | 64.17 | - | 45 | 14.3 | 25 | 8 | - |
| | | 42 XL 037 | 2 | 42 | 67.91 | 67.41 | - | 45 | 14.3 | 25 | 8 | - |
| | | 44 XL 037 | 2 | 44 | 71.15 | 70.64 | - | 45 | 14.3 | 25 | 8 | - |
| | | 48 XL 037 | 3 | 48 | 77.62 | 77.11 | - | 45 | 14.3 | 25 | 10 | - |
| | | 60 XL 037 | 3 | 60 | 97.02 | 96.51 | - | 45 | 14.3 | 25 | 10 | - |
| | | 72 XL 037 | 3 | 72 | 116.42 | 115.92 | - | 45 | 14.3 | 25 | 10 | - |

POWERGRIP® TOOTHED PULLEYS FOR SYNCHRONOUS BELTS



execution 1F

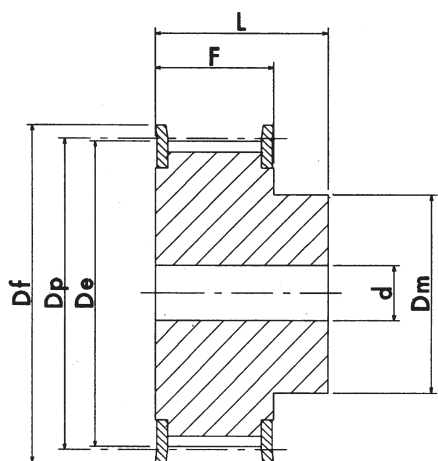


execution 4

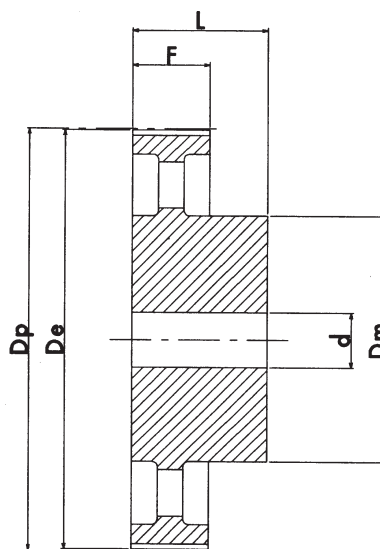
L 050 PITCH 3/8" (9.52 mm.)

| CHARACTERISTICS | TYPE | EXEC. | No. of TEETH | Dp PITCH LINE | De EXTERNAL | Df FLANGE | Dm HUB | F | L | d | FLANGE No. | |
|-----------------|----------------|----------|--------------|---------------|-------------|-----------|--------|----|------|----|------------|----|
| STEEL | WITH FLANGE | 10 L 050 | 1F | 10 | 30.33 | 29.56 | 37.00 | 20 | 19.0 | 28 | 8 | 50 |
| | | 11 L 050 | 1F | 11 | 33.35 | 32.59 | 37.00 | 22 | 19.0 | 30 | 8 | 50 |
| | | 12 L 050 | 1F | 12 | 36.37 | 35.62 | 43.00 | 24 | 19.0 | 30 | 8 | 52 |
| | | 13 L 050 | 1F | 13 | 39.41 | 38.65 | 44.00 | 28 | 19.0 | 30 | 8 | 83 |
| | | 14 L 050 | 1F | 14 | 42.44 | 41.68 | 48.00 | 28 | 19.0 | 30 | 8 | 54 |
| | | 15 L 050 | 1F | 15 | 45.48 | 44.72 | 51.00 | 34 | 19.0 | 30 | 8 | 55 |
| | | 16 L 050 | 1F | 16 | 48.51 | 47.75 | 54.00 | 36 | 19.0 | 32 | 8 | 56 |
| | | 17 L 050 | 1F | 17 | 51.54 | 50.78 | 57.00 | 36 | 19.0 | 32 | 10 | 57 |
| | | 18 L 050 | 1F | 18 | 54.59 | 53.81 | 60.00 | 40 | 19.0 | 32 | 10 | 58 |
| | | 19 L 050 | 1F | 19 | 57.61 | 56.84 | 64.00 | 40 | 19.0 | 32 | 10 | 59 |
| | | 20 L 050 | 1F | 20 | 60.63 | 59.88 | 66.50 | 40 | 19.0 | 32 | 10 | 60 |
| | | 21 L 050 | 1F | 21 | 63.68 | 62.91 | 70.00 | 45 | 19.0 | 32 | 10 | 61 |
| | | 22 L 050 | 1F | 22 | 66.70 | 65.94 | 75.00 | 45 | 19.0 | 32 | 10 | 62 |
| | | 23 L 050 | 1F | 23 | 69.73 | 68.97 | 79.00 | 55 | 19.0 | 32 | 10 | 63 |
| | | 24 L 050 | 1F | 24 | 72.77 | 72.00 | 79.00 | 55 | 19.0 | 32 | 10 | 63 |
| | | 25 L 050 | 1F | 25 | 75.80 | 75.04 | 82.50 | 58 | 19.0 | 32 | 10 | 64 |
| | | 26 L 050 | 1F | 26 | 78.84 | 78.07 | 86.00 | 58 | 19.0 | 32 | 11 | 65 |
| | | 27 L 050 | 1F | 27 | 81.86 | 81.10 | 86.00 | 58 | 19.0 | 32 | 11 | 65 |
| | | 28 L 050 | 1F | 28 | 84.89 | 84.13 | 91.00 | 58 | 19.0 | 32 | 11 | 66 |
| | | 30 L 050 | 1F | 30 | 90.96 | 90.20 | 97.00 | 70 | 19.0 | 32 | 11 | 68 |
| | | 32 L 050 | 1F | 32 | 97.03 | 96.26 | 102.00 | 70 | 19.0 | 32 | 11 | 70 |
| | | 33 L 050 | 1F | 33 | 100.05 | 99.29 | 106.00 | 70 | 19.0 | 32 | 11 | 71 |
| | | 34 L 050 | 1F | 34 | 103.08 | 102.32 | 112.00 | 70 | 19.0 | 32 | 11 | 72 |
| | | 35 L 050 | 1F | 35 | 106.12 | 105.35 | 112.00 | 70 | 19.0 | 32 | 11 | 72 |
| 36 L 050 | 1F | 36 | 109.14 | 108.39 | 115.00 | 70 | 19.0 | 32 | 11 | 74 | | |
| 40 L 050 | 1F | 40 | 121.29 | 120.51 | 128.00 | 70 | 19.0 | 32 | 11 | 78 | | |
| 42 L 050 | 1F | 42 | 127.34 | 126.57 | 135.00 | 70 | 19.0 | 32 | 11 | 80 | | |
| 44 L 050 | 1F | 44 | 133.40 | 132.64 | 142.00 | 70 | 19.0 | 32 | 11 | 81 | | |
| 45 L 050 | 1F | 45 | 136.44 | 135.67 | 142.00 | 70 | 19.0 | 32 | 11 | 81 | | |
| 48 L 050 | 1F | 48 | 145.54 | 144.77 | 150.00 | 70 | 19.0 | 32 | 11 | 85 | | |
| CAST-IRON | WITHOUT FLANGE | 50 L 050 | 4 | 50 | 151.60 | 150.83 | - | 70 | 19.0 | 32 | 14 | - |
| | | 52 L 050 | 4 | 52 | 157.66 | 156.90 | - | 70 | 19.0 | 32 | 14 | - |
| | | 56 L 050 | 4 | 56 | 169.79 | 169.02 | - | 70 | 19.0 | 32 | 14 | - |
| | | 57 L 050 | 4 | 57 | 172.82 | 172.06 | - | 70 | 19.0 | 32 | 14 | - |
| | | 60 L 050 | 4 | 60 | 181.92 | 181.15 | - | 75 | 19.0 | 42 | 14 | - |
| | | 72 L 050 | 4 | 72 | 218.29 | 217.53 | - | 75 | 19.0 | 42 | 14 | - |
| | | 84 L 050 | 4 | 84 | 254.69 | 253.92 | - | 75 | 19.0 | 42 | 14 | - |
| | | 96 L 050 | 4 | 96 | 291.06 | 290.30 | - | 75 | 19.0 | 42 | 14 | - |

POWERGRIP® TOOTHED PULLEYS FOR SYNCHRONOUS BELTS



execution 1F

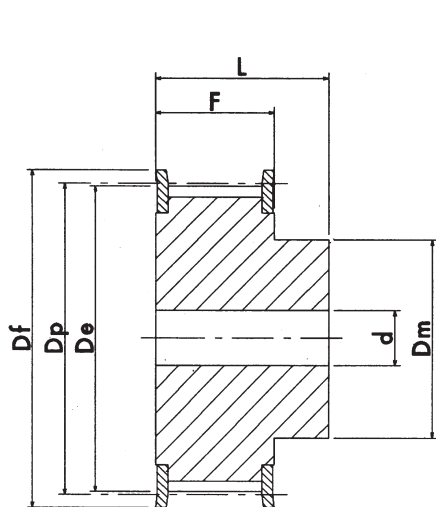


execution 4

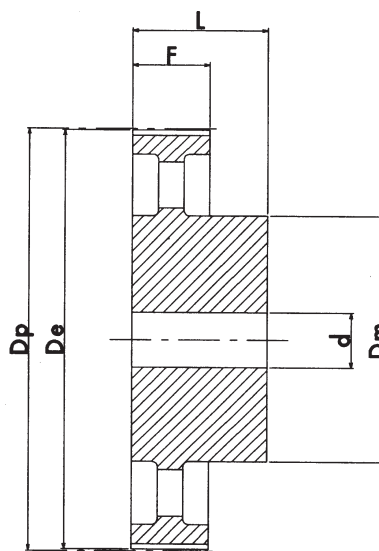
L 075 PITCH 3/8" (9.52 mm.)

| CHARACTERISTICS | TYPE | EXEC. | No. of TEETH | Dp PITCH LINE | De EXTERNAL | Df FLANGE | Dm HUB | F | L | d | FLANGE No. | |
|-----------------|----------------|----------|--------------|---------------|-------------|-----------|--------|----|------|----|------------|----|
| STEEL | WITH FLANGE | 10 L 075 | 1F | 10 | 30.33 | 29.56 | 37.0 | 20 | 25.4 | 38 | 8 | 50 |
| | | 11 L 075 | 1F | 11 | 33.35 | 32.59 | 37.0 | 22 | 25.4 | 38 | 8 | 50 |
| | | 12 L 075 | 1F | 12 | 36.37 | 35.62 | 43.0 | 24 | 25.4 | 38 | 8 | 52 |
| | | 13 L 075 | 1F | 13 | 39.41 | 38.65 | 44.0 | 28 | 25.4 | 38 | 8 | 83 |
| | | 14 L 075 | 1F | 14 | 42.44 | 41.68 | 48.0 | 28 | 25.4 | 38 | 11 | 54 |
| | | 15 L 075 | 1F | 15 | 45.48 | 44.72 | 51.0 | 34 | 25.4 | 38 | 11 | 55 |
| | | 16 L 075 | 1F | 16 | 48.51 | 47.75 | 54.0 | 36 | 25.4 | 38 | 11 | 56 |
| | | 17 L 075 | 1F | 17 | 51.54 | 50.78 | 57.0 | 36 | 25.4 | 38 | 11 | 57 |
| | | 18 L 075 | 1F | 18 | 54.59 | 53.81 | 60.0 | 40 | 25.4 | 38 | 11 | 58 |
| | | 19 L 075 | 1F | 19 | 57.61 | 56.84 | 64.0 | 40 | 25.4 | 38 | 11 | 59 |
| | | 20 L 075 | 1F | 20 | 60.63 | 59.88 | 66.5 | 40 | 25.4 | 38 | 11 | 60 |
| | | 21 L 075 | 1F | 21 | 63.68 | 62.91 | 70.0 | 45 | 25.4 | 38 | 11 | 61 |
| | | 22 L 075 | 1F | 22 | 66.70 | 65.94 | 75.0 | 45 | 25.4 | 38 | 11 | 62 |
| | | 23 L 075 | 1F | 23 | 69.73 | 68.97 | 79.0 | 55 | 25.4 | 38 | 11 | 63 |
| | | 24 L 075 | 1F | 24 | 72.77 | 72.00 | 79.0 | 55 | 25.4 | 38 | 11 | 63 |
| | | 25 L 075 | 1F | 25 | 75.80 | 75.04 | 82.5 | 58 | 25.4 | 38 | 11 | 64 |
| | | 26 L 075 | 1F | 26 | 78.84 | 78.07 | 86.0 | 58 | 25.4 | 38 | 11 | 65 |
| | | 27 L 075 | 1F | 27 | 81.86 | 81.10 | 86.0 | 58 | 25.4 | 38 | 11 | 65 |
| | | 28 L 075 | 1F | 28 | 84.89 | 84.13 | 91.0 | 58 | 25.4 | 38 | 11 | 66 |
| | | 30 L 075 | 1F | 30 | 90.96 | 90.20 | 97.0 | 70 | 25.4 | 38 | 11 | 68 |
| | | 32 L 075 | 1F | 32 | 97.03 | 96.26 | 102.0 | 70 | 25.4 | 38 | 11 | 70 |
| | | 33 L 075 | 1F | 33 | 100.05 | 99.29 | 106.0 | 70 | 25.4 | 38 | 11 | 71 |
| | | 34 L 075 | 1F | 34 | 103.08 | 102.32 | 112.0 | 70 | 25.4 | 38 | 11 | 72 |
| | | 35 L 075 | 1F | 35 | 106.12 | 105.35 | 112.0 | 70 | 25.4 | 38 | 11 | 72 |
| 36 L 075 | 1F | 36 | 109.14 | 108.39 | 115.0 | 70 | 25.4 | 38 | 11 | 74 | | |
| 40 L 075 | 1F | 40 | 121.29 | 120.51 | 128.0 | 70 | 25.4 | 38 | 11 | 78 | | |
| 42 L 075 | 1F | 42 | 127.34 | 126.57 | 135.0 | 70 | 25.4 | 38 | 11 | 80 | | |
| 44 L 075 | 1F | 44 | 133.40 | 132.64 | 142.0 | 70 | 25.4 | 38 | 11 | 81 | | |
| 45 L 075 | 1F | 45 | 136.44 | 135.67 | 142.0 | 70 | 25.4 | 38 | 11 | 81 | | |
| 48 L 075 | 1F | 48 | 145.54 | 144.77 | 150.0 | 70 | 25.4 | 38 | 11 | 85 | | |
| CAST-IRON | WITHOUT FLANGE | 50 L 075 | 4 | 50 | 151.60 | 150.83 | - | 70 | 25.4 | 38 | 14 | - |
| | | 52 L 075 | 4 | 52 | 157.66 | 156.90 | - | 70 | 25.4 | 38 | 14 | - |
| | | 56 L 075 | 4 | 56 | 169.79 | 169.02 | - | 70 | 25.4 | 38 | 14 | - |
| | | 57 L 075 | 4 | 57 | 172.82 | 172.06 | - | 70 | 25.4 | 38 | 14 | - |
| | | 60 L 075 | 4 | 60 | 181.92 | 181.15 | - | 75 | 25.4 | 45 | 14 | - |
| | | 72 L 075 | 4 | 72 | 218.29 | 217.53 | - | 75 | 25.4 | 45 | 14 | - |
| | | 84 L 075 | 4 | 84 | 254.69 | 253.92 | - | 75 | 25.4 | 45 | 14 | - |
| | | 96 L 075 | 4 | 96 | 291.06 | 290.30 | - | 75 | 25.4 | 45 | 14 | - |

POWERGRIP® TOOTHED PULLEYS FOR SYNCHRONOUS BELTS



execution 1F

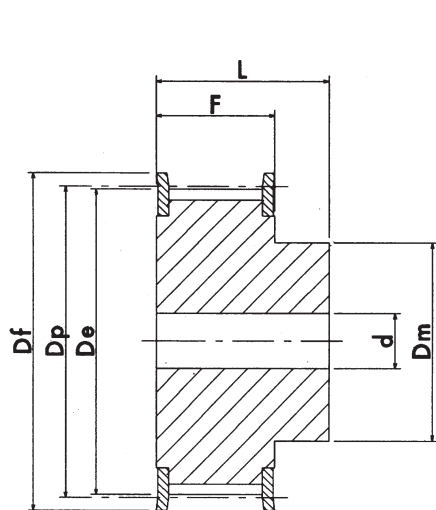


execution 4

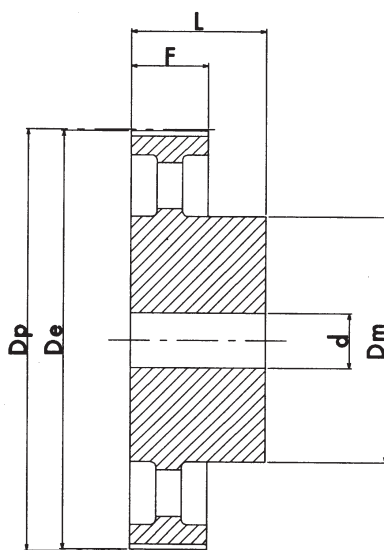
L 100 PITCH 3/8" (9.52 mm.)

| CHARACTERISTICS | TYPE | EXEC. | No. of TEETH | Dp PITCH LINE | De EXTERNAL | Df FLANGE | Dm HUB | F | L | d | FLANGE No. | |
|-----------------|----------------|----------|--------------|---------------|-------------|-----------|--------|----|------|----|------------|----|
| STEEL | WITH FLANGE | 10 L 100 | 1F | 10 | 30.33 | 29.56 | 37.0 | 20 | 31.8 | 45 | 8 | 50 |
| | | 11 L 100 | 1F | 11 | 33.35 | 32.59 | 37.0 | 22 | 31.8 | 45 | 8 | 50 |
| | | 12 L 100 | 1F | 12 | 36.37 | 35.62 | 43.0 | 24 | 31.8 | 45 | 8 | 52 |
| | | 13 L 100 | 1F | 13 | 39.41 | 38.65 | 44.0 | 28 | 31.8 | 45 | 8 | 83 |
| | | 14 L 100 | 1F | 14 | 42.44 | 41.68 | 48.0 | 28 | 31.8 | 45 | 11 | 54 |
| | | 15 L 100 | 1F | 15 | 45.48 | 44.72 | 51.0 | 34 | 31.8 | 45 | 11 | 55 |
| | | 16 L 100 | 1F | 16 | 48.51 | 47.75 | 54.0 | 36 | 31.8 | 45 | 11 | 56 |
| | | 17 L 100 | 1F | 17 | 51.54 | 50.78 | 57.0 | 36 | 31.8 | 45 | 11 | 57 |
| | | 18 L 100 | 1F | 18 | 54.59 | 53.81 | 60.0 | 40 | 31.8 | 45 | 11 | 58 |
| | | 19 L 100 | 1F | 19 | 57.61 | 56.84 | 64.0 | 40 | 31.8 | 45 | 11 | 59 |
| | | 20 L 100 | 1F | 20 | 60.63 | 59.88 | 66.5 | 40 | 31.8 | 45 | 11 | 60 |
| | | 21 L 100 | 1F | 21 | 63.68 | 62.91 | 70.0 | 45 | 31.8 | 45 | 11 | 61 |
| | | 22 L 100 | 1F | 22 | 66.70 | 65.94 | 75.0 | 45 | 31.8 | 45 | 11 | 62 |
| | | 23 L 100 | 1F | 23 | 69.73 | 68.97 | 79.0 | 55 | 31.8 | 45 | 11 | 63 |
| | | 24 L 100 | 1F | 24 | 72.77 | 72.00 | 79.0 | 55 | 31.8 | 45 | 11 | 63 |
| | | 25 L 100 | 1F | 25 | 75.80 | 75.04 | 82.5 | 58 | 31.8 | 45 | 11 | 64 |
| | | 26 L 100 | 1F | 26 | 78.84 | 78.07 | 86.0 | 58 | 31.8 | 45 | 11 | 65 |
| | | 27 L 100 | 1F | 27 | 81.86 | 81.10 | 86.0 | 58 | 31.8 | 45 | 11 | 65 |
| | | 28 L 100 | 1F | 28 | 84.89 | 84.13 | 91.0 | 58 | 31.8 | 45 | 11 | 66 |
| | | 30 L 100 | 1F | 30 | 90.96 | 90.20 | 97.0 | 70 | 31.8 | 45 | 11 | 68 |
| | | 32 L 100 | 1F | 32 | 97.03 | 96.26 | 102.0 | 70 | 31.8 | 45 | 11 | 70 |
| | | 33 L 100 | 1F | 33 | 100.05 | 99.29 | 106.0 | 70 | 31.8 | 45 | 11 | 71 |
| | | 34 L 100 | 1F | 34 | 103.08 | 102.32 | 112.0 | 70 | 31.8 | 45 | 11 | 72 |
| | | 35 L 100 | 1F | 35 | 106.12 | 105.35 | 112.0 | 70 | 31.8 | 45 | 11 | 72 |
| 36 L 100 | 1F | 36 | 109.14 | 108.39 | 115.0 | 70 | 31.8 | 45 | 11 | 74 | | |
| 40 L 100 | 1F | 40 | 121.29 | 120.51 | 128.0 | 70 | 31.8 | 45 | 11 | 78 | | |
| 42 L 100 | 1F | 42 | 127.34 | 126.57 | 135.0 | 70 | 31.8 | 45 | 11 | 80 | | |
| 44 L 100 | 1F | 44 | 133.40 | 132.64 | 142.0 | 70 | 31.8 | 45 | 11 | 81 | | |
| 45 L 100 | 1F | 45 | 136.44 | 135.67 | 142.0 | 70 | 31.8 | 45 | 11 | 81 | | |
| 48 L 100 | 1F | 48 | 145.54 | 144.77 | 150.0 | 70 | 31.8 | 45 | 11 | 85 | | |
| CAST-IRON | WITHOUT FLANGE | 50 L 100 | 4 | 50 | 151.60 | 150.83 | - | 70 | 31.8 | 45 | 14 | - |
| | | 52 L 100 | 4 | 52 | 157.66 | 156.90 | - | 70 | 31.8 | 45 | 14 | - |
| | | 56 L 100 | 4 | 56 | 169.79 | 169.02 | - | 70 | 31.8 | 45 | 14 | - |
| | | 57 L 100 | 4 | 57 | 172.82 | 172.06 | - | 70 | 31.8 | 45 | 14 | - |
| | | 60 L 100 | 4 | 60 | 181.92 | 181.15 | - | 75 | 31.8 | 45 | 14 | - |
| | | 72 L 100 | 4 | 72 | 218.29 | 217.53 | - | 75 | 31.8 | 45 | 14 | - |
| | | 84 L 100 | 4 | 84 | 254.69 | 253.92 | - | 75 | 31.8 | 45 | 14 | - |
| | | 96 L 100 | 4 | 96 | 291.06 | 290.30 | - | 75 | 31.8 | 45 | 14 | - |

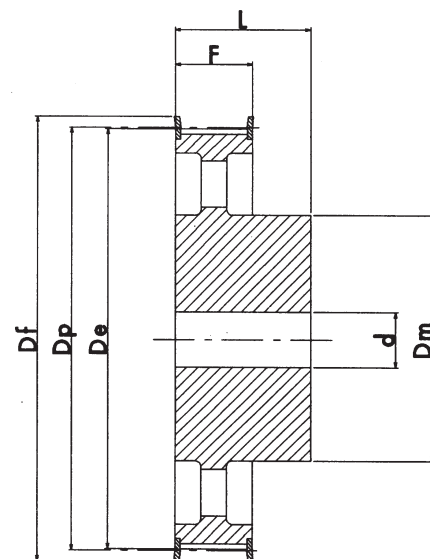
POWERGRIP® TOOTHED PULLEYS FOR SYNCHRONOUS BELTS



execution 1F



execution 4

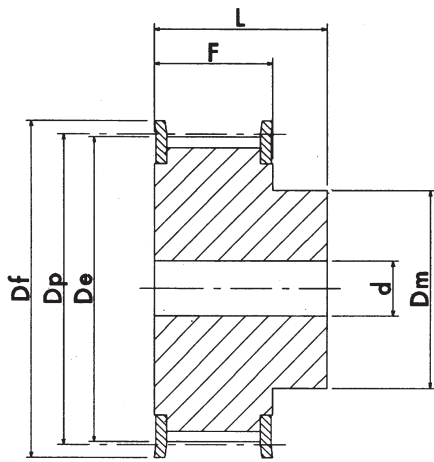


execution 5F

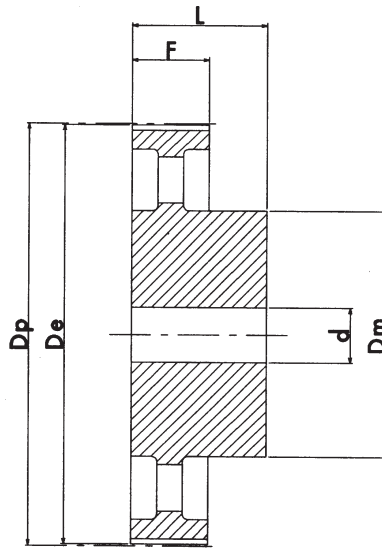
TIPO: H 075 PASSO 1/2" (12.7 mm.)

| CHARACTERISTICS | TYPE | EXEC. | No. of TEETH | Dp PITCH LINE | De EXTERNAL | Df FLANGE | Dm HUB | F | L | d | FLANGE No. |
|-----------------|----------------|----------|--------------|---------------|-------------|-----------|--------|------|------|----|------------|
| STEEL | WITH FLANGE | 14 H 075 | 14 | 56.59 | 55.22 | 64.0 | 40 | 26.4 | 40 | - | 59 |
| | | 15 H 075 | 15 | 60.64 | 59.27 | 66.5 | 45 | 26.4 | 40 | - | 60 |
| | | 16 H 075 | 16 | 64.67 | 63.31 | 70.0 | 45 | 26.4 | 40 | - | 61 |
| | | 17 H 075 | 17 | 68.72 | 67.35 | 75.0 | 45 | 26.4 | 40 | - | 62 |
| | | 18 H 075 | 18 | 72.77 | 71.39 | 79.0 | 55 | 26.4 | 40 | - | 63 |
| | | 19 H 075 | 19 | 76.81 | 75.44 | 82.5 | 60 | 26.4 | 40 | 11 | 64 |
| | | 20 H 075 | 20 | 80.85 | 79.48 | 87.0 | 62 | 26.4 | 40 | 11 | 76 |
| | | 21 H 075 | 21 | 84.89 | 83.52 | 91.0 | 65 | 26.4 | 40 | 11 | 66 |
| | | 22 H 075 | 22 | 88.93 | 87.56 | 94.0 | 68 | 26.4 | 40 | 11 | 67 |
| | | 23 H 075 | 23 | 92.98 | 91.61 | 97.0 | 72 | 26.4 | 40 | 11 | 68 |
| | | 24 H 075 | 24 | 97.03 | 95.65 | 102.0 | 72 | 26.4 | 40 | 11 | 70 |
| | | 25 H 075 | 25 | 101.06 | 99.69 | 106.0 | 72 | 26.4 | 40 | 11 | 71 |
| | | 26 H 075 | 26 | 105.11 | 103.73 | 112.0 | 80 | 26.4 | 40 | 11 | 72 |
| | | 27 H 075 | 27 | 109.15 | 107.78 | 115.0 | 80 | 26.4 | 40 | 11 | 74 |
| | | 28 H 075 | 28 | 113.18 | 111.82 | 120.0 | 80 | 26.4 | 40 | 11 | 75 |
| | | 30 H 075 | 30 | 121.29 | 119.90 | 128.0 | 80 | 26.4 | 40 | 11 | 78 |
| | | 32 H 075 | 32 | 129.30 | 127.99 | 135.0 | 80 | 26.4 | 40 | 11 | 80 |
| | | 33 H 075 | 33 | 133.40 | 132.03 | 142.0 | 80 | 26.4 | 40 | 11 | 81 |
| | | 34 H 075 | 34 | 137.45 | 136.07 | 142.0 | 80 | 26.4 | 40 | 11 | 81 |
| | | 35 H 075 | 35 | 141.49 | 140.12 | 150.0 | 80 | 26.4 | 40 | 11 | 85 |
| 36 H 075 | 36 | 145.54 | 144.16 | 150.0 | 80 | 26.4 | 40 | 11 | 85 | | |
| 38 H 075 | 38 | 153.62 | 152.24 | 158.0 | 80 | 26.4 | 40 | 11 | 86 | | |
| 40 H 075 | 40 | 161.70 | 160.33 | 168.0 | 80 | 26.4 | 40 | 11 | 90 | | |
| 42 H 075 | 42 | 169.79 | 168.41 | 184.0 | 80 | 26.4 | 40 | 11 | 94 | | |
| CAST-IRON | WITHOUT FLANGE | 44 H 075 | 44 | 177.80 | 176.50 | 184.0 | 80 | 26.4 | 40 | 14 | 95 |
| | | 48 H 075 | 48 | 194.03 | 192.67 | 200.0 | 90 | 26.4 | 45 | 14 | 100 |
| | | 50 H 075 | 4 | 50 | 202.13 | 200.75 | - | 90 | 26.4 | 45 | 14 |

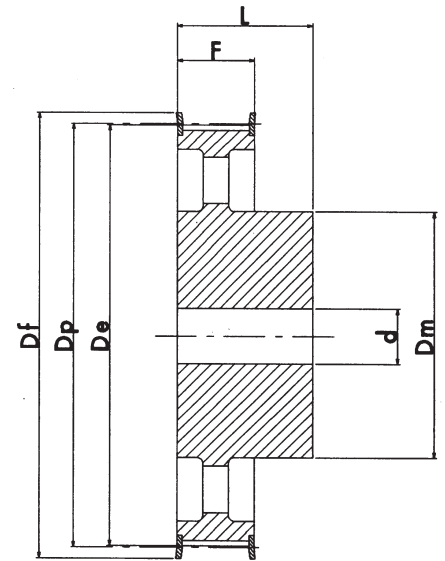
POWERGRIP® TOOTHED PULLEYS FOR SYNCHRONOUS BELTS



esecuzione 1F



esecuzione 4

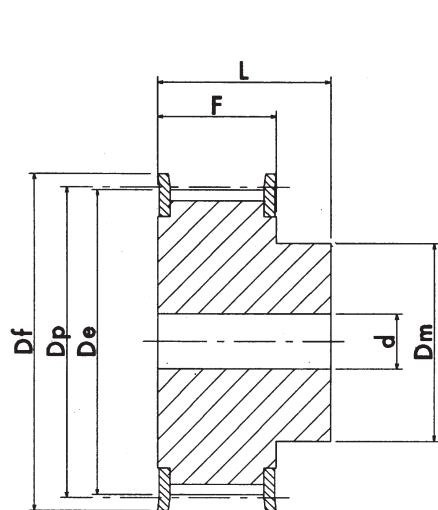


esecuzione 5F

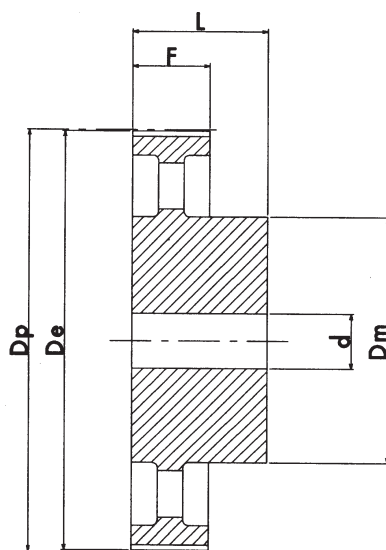
H 100 PITCH 1/2" (12.7 mm.)

| CHARACTERISTICS | TYPE | EXEC. | No. of TEETH | Dp PITCH LINE | De EXTERNAL | Df FLANGE | Dm HUB | F | L | d | FLANGE No. | |
|-----------------|----------------|-----------|--------------|---------------|-------------|-----------|--------|-----|------|----|------------|-----|
| STEEL | WITH FLANGE | 14 H 100 | 1F | 14 | 56.59 | 55.22 | 64.0 | 40 | 31.8 | 45 | - | 59 |
| | | 15 H 100 | 1F | 15 | 60.64 | 59.27 | 66.5 | 45 | 31.8 | 45 | - | 60 |
| | | 16 H 100 | 1F | 16 | 64.67 | 63.31 | 70.0 | 45 | 31.8 | 45 | - | 61 |
| | | 17 H 100 | 1F | 17 | 68.72 | 67.35 | 75.0 | 45 | 31.8 | 45 | - | 62 |
| | | 18 H 100 | 1F | 18 | 72.77 | 71.39 | 79.0 | 55 | 31.8 | 45 | - | 63 |
| | | 19 H 100 | 1F | 19 | 76.81 | 75.44 | 82.5 | 60 | 31.8 | 45 | 14 | 64 |
| | | 20 H 100 | 1F | 20 | 80.85 | 79.48 | 87.0 | 62 | 31.8 | 45 | 14 | 76 |
| | | 21 H 100 | 1F | 21 | 84.89 | 83.52 | 91.0 | 65 | 31.8 | 45 | 14 | 66 |
| | | 22 H 100 | 1F | 22 | 88.93 | 87.56 | 94.0 | 68 | 31.8 | 45 | 14 | 67 |
| | | 23 H 100 | 1F | 23 | 92.98 | 91.61 | 97.0 | 72 | 31.8 | 45 | 14 | 68 |
| | | 24 H 100 | 1F | 24 | 97.03 | 95.65 | 102.0 | 72 | 31.8 | 45 | 14 | 70 |
| | | 25 H 100 | 1F | 25 | 101.06 | 99.69 | 106.0 | 72 | 31.8 | 45 | 14 | 71 |
| | | 26 H 100 | 1F | 26 | 105.11 | 103.73 | 112.0 | 80 | 31.8 | 45 | 14 | 72 |
| | | 27 H 100 | 1F | 27 | 109.15 | 107.78 | 115.0 | 80 | 31.8 | 45 | 14 | 74 |
| | | 28 H 100 | 1F | 28 | 113.18 | 111.82 | 120.0 | 80 | 31.8 | 45 | 14 | 75 |
| | | 29 H 100 | 1F | 29 | 117.23 | 115.86 | 120.0 | 80 | 31.8 | 45 | 14 | 75 |
| | | 30 H 100 | 1F | 30 | 121.29 | 119.90 | 128.0 | 80 | 31.8 | 45 | 14 | 78 |
| | | 32 H 100 | 1F | 32 | 129.30 | 127.99 | 135.0 | 80 | 31.8 | 45 | 14 | 80 |
| | | 33 H 100 | 1F | 33 | 133.40 | 132.03 | 142.0 | 80 | 31.8 | 45 | 14 | 81 |
| | | 34 H 100 | 1F | 34 | 137.45 | 136.07 | 142.0 | 80 | 31.8 | 45 | 14 | 81 |
| | | 35 H 100 | 1F | 35 | 141.49 | 140.12 | 150.0 | 80 | 31.8 | 45 | 14 | 85 |
| 36 H 100 | 1F | 36 | 145.54 | 144.16 | 150.0 | 80 | 31.8 | 45 | 14 | 85 | | |
| 38 H 100 | 1F | 38 | 153.62 | 152.24 | 158.0 | 80 | 31.8 | 45 | 14 | 86 | | |
| 40 H 100 | 1F | 40 | 161.70 | 160.33 | 168.0 | 80 | 31.8 | 45 | 14 | 90 | | |
| 42 H 100 | 1F | 42 | 169.79 | 168.41 | 180.0 | 80 | 31.8 | 45 | 14 | 94 | | |
| CAST-IRON | WITH FLANGE | 44 H 100 | 5F | 44 | 177.88 | 176.50 | 184.0 | 80 | 31.8 | 50 | 14 | 95 |
| | | 45 H 100 | 5F | 45 | 181.91 | 180.54 | 192.0 | 80 | 31.8 | 50 | 14 | 96 |
| | | 48 H 100 | 5F | 48 | 194.03 | 192.67 | 200.0 | 90 | 31.8 | 50 | 14 | 100 |
| | WITHOUT FLANGE | 50 H 100 | 4 | 50 | 202.13 | 200.75 | - | 90 | 31.8 | 50 | 19 | - |
| | | 52 H 100 | 4 | 52 | 210.21 | 208.84 | - | 90 | 31.8 | 50 | 19 | - |
| | | 58 H 100 | 4 | 58 | 234.47 | 233.09 | - | 90 | 31.8 | 50 | 19 | - |
| | | 60 H 100 | 4 | 60 | 242.55 | 241.18 | - | 120 | 31.8 | 50 | 19 | - |
| | | 70 H 100 | 4 | 70 | 282.98 | 281.61 | - | 120 | 31.8 | 55 | 19 | - |
| | | 72 H 100 | 4 | 72 | 291.06 | 289.69 | - | 120 | 31.8 | 55 | 19 | - |
| | | 84 H 100 | 4 | 84 | 339.57 | 338.20 | - | 120 | 31.8 | 55 | 19 | - |
| | | 96 H 100 | 4 | 96 | 388.09 | 386.71 | - | 120 | 31.8 | 60 | 19 | - |
| | | 120 H 100 | 4 | 120 | 485.12 | 483.73 | - | 120 | 31.8 | 60 | 19 | - |

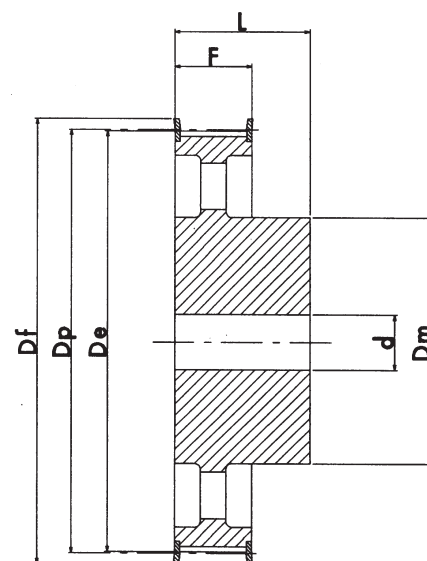
POWERGRIP® TOOTHED PULLEYS FOR SYNCHRONOUS BELTS



esecuzione 1F



esecuzione 4

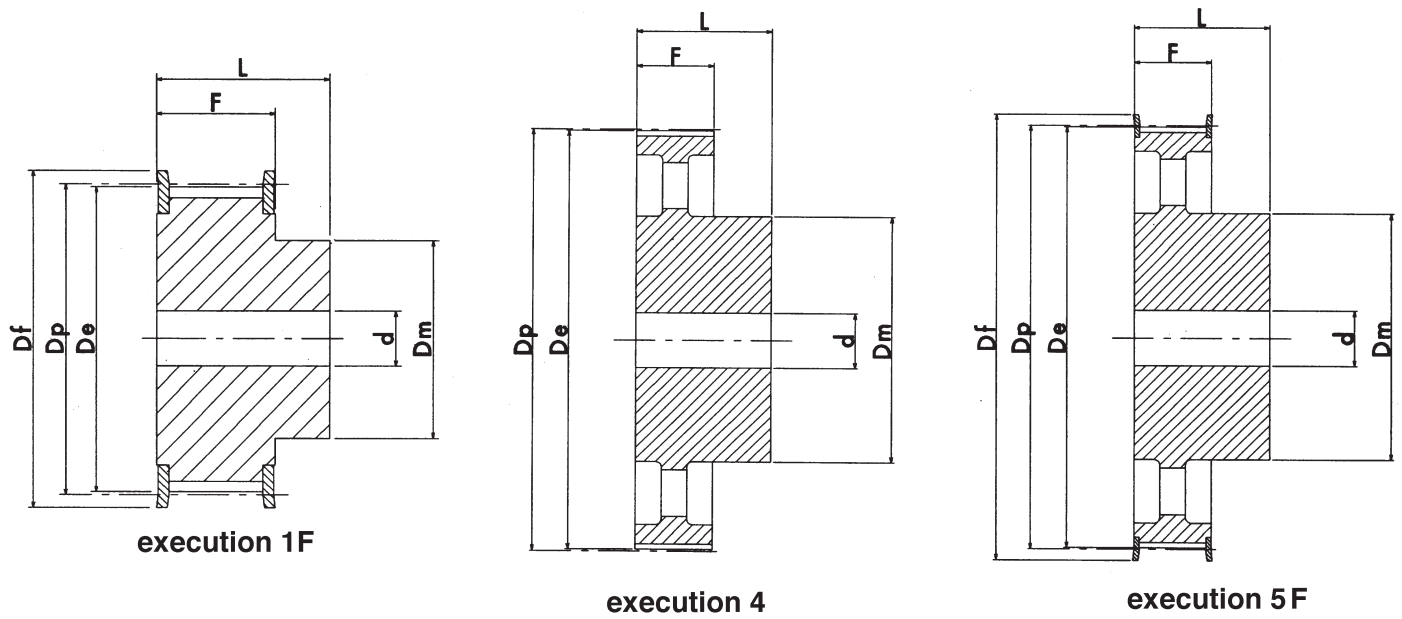


esecuzione 5F

H 150 PITCH 1/2" (12.7 mm.)

| CARATTERISTICHE | TYPE | EXEC. | No. of TEETH | Dp PITCH LINE | De EXTERNAL | Df FLANGE | Dm HUB | F | L | d | FLANGE No. | | | |
|-----------------|-------------|-----------|----------------|---------------|-------------|-----------|--------|--------|--------|-----|------------|----|----|-----|
| STEEL | WITH FLANGE | 14 H 150 | 14 | 56.59 | 55.22 | 64.0 | 42 | 46.0 | 58 | - | 59 | | | |
| | | 15 H 150 | 15 | 60.64 | 59.27 | 66.5 | 45 | 46.0 | 58 | - | 60 | | | |
| | | 16 H 150 | 16 | 64.67 | 63.31 | 70.0 | 45 | 46.0 | 58 | - | 61 | | | |
| | | 17 H 150 | 17 | 68.72 | 67.35 | 75.0 | 45 | 46.0 | 58 | - | 62 | | | |
| | | 18 H 150 | 18 | 72.77 | 71.39 | 79.0 | 55 | 46.0 | 58 | - | 63 | | | |
| | | 19 H 150 | 19 | 76.81 | 75.44 | 82.5 | 60 | 46.0 | 58 | - | 64 | | | |
| | | 20 H 150 | 20 | 80.85 | 79.48 | 87.0 | 62 | 46.0 | 58 | - | 76 | | | |
| | | 21 H 150 | 21 | 84.89 | 83.52 | 91.0 | 65 | 46.0 | 58 | - | 66 | | | |
| | | 22 H 150 | 22 | 88.93 | 87.56 | 94.0 | 68 | 46.0 | 58 | - | 67 | | | |
| | | 23 H 150 | 23 | 92.98 | 91.61 | 97.0 | 72 | 46.0 | 58 | - | 68 | | | |
| | | 24 H 150 | 24 | 97.03 | 95.65 | 102.0 | 72 | 46.0 | 58 | - | 70 | | | |
| | | 25 H 150 | 25 | 101.06 | 99.69 | 106.0 | 72 | 46.0 | 58 | - | 71 | | | |
| | | 26 H 150 | 26 | 105.11 | 103.73 | 112.0 | 80 | 46.0 | 58 | - | 72 | | | |
| | | 27 H 150 | 27 | 109.15 | 107.78 | 115.0 | 80 | 46.0 | 58 | - | 74 | | | |
| | | 28 H 150 | 28 | 113.18 | 111.82 | 120.0 | 80 | 46.0 | 58 | - | 75 | | | |
| | | 29 H 150 | 29 | 117.23 | 115.86 | 120.0 | 80 | 46.0 | 58 | - | 75 | | | |
| | | 30 H 150 | 30 | 121.29 | 119.90 | 128.0 | 80 | 46.0 | 58 | - | 78 | | | |
| | | 32 H 150 | 32 | 129.30 | 127.99 | 135.0 | 80 | 46.0 | 58 | - | 80 | | | |
| | | 33 H 150 | 33 | 133.40 | 132.03 | 142.0 | 80 | 46.0 | 58 | - | 81 | | | |
| | | 34 H 150 | 34 | 137.45 | 136.07 | 142.0 | 80 | 46.0 | 58 | - | 81 | | | |
| | | 35 H 150 | 35 | 141.49 | 140.12 | 150.0 | 80 | 46.0 | 58 | - | 85 | | | |
| | | 36 H 150 | 36 | 145.54 | 144.16 | 150.0 | 80 | 46.0 | 58 | - | 85 | | | |
| | | 38 H 150 | 38 | 153.62 | 152.24 | 158.0 | 80 | 46.0 | 58 | - | 86 | | | |
| | | 40 H 150 | 40 | 161.70 | 160.33 | 168.0 | 80 | 46.0 | 58 | - | 90 | | | |
| | | 42 H 150 | 42 | 169.79 | 168.41 | 180.0 | 80 | 46.0 | 58 | - | 94 | | | |
| | | CAST-IRON | WITHOUT FLANGE | 44 H 150 | 5F | 44 | 177.88 | 176.50 | 184.00 | 80 | 46.0 | 58 | 19 | 95 |
| | | | | 45 H 150 | 5F | 45 | 181.91 | 180.54 | 192.00 | 80 | 46.0 | 58 | 19 | 96 |
| | | | | 48 H 150 | 5F | 48 | 194.03 | 192.67 | 200.00 | 90 | 46.0 | 65 | 19 | 100 |
| | | | | 50 H 150 | 4 | 50 | 202.13 | 200.75 | - | 90 | 46.0 | 65 | 19 | - |
| | | | | 52 H 150 | 4 | 52 | 210.21 | 208.84 | - | 90 | 46.0 | 65 | 19 | - |
| | | | | 58 H 150 | 4 | 58 | 234.47 | 233.09 | - | 90 | 46.0 | 65 | 19 | - |
| | | | | 60 H 150 | 4 | 60 | 242.55 | 241.18 | - | 120 | 46.0 | 65 | 19 | - |
| | | | | 70 H 150 | 4 | 70 | 282.98 | 281.61 | - | 120 | 46.0 | 65 | 24 | - |
| | | | | 72 H 150 | 4 | 72 | 291.06 | 289.69 | - | 120 | 46.0 | 65 | 24 | - |
| | | | | 84 H 150 | 4 | 84 | 339.57 | 338.20 | - | 120 | 46.0 | 65 | 24 | - |
| | | 96 H 150 | 4 | 96 | 388.09 | 386.71 | - | 120 | 46.0 | 65 | 24 | - | | |
| | | 120 H 150 | 4 | 120 | 485.12 | 483.73 | - | 120 | 46.0 | 65 | 24 | - | | |

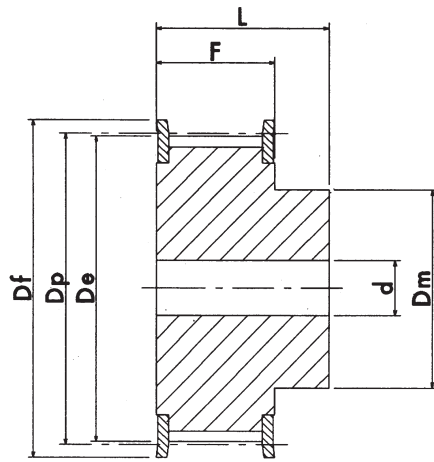
POWERGRIP® TOOTHED PULLEYS FOR SYNCHRONOUS BELTS



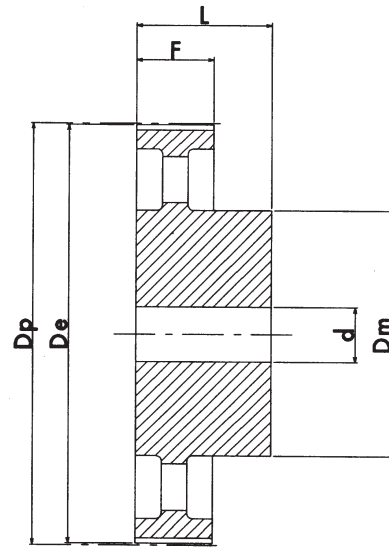
H 200 PITCH 1/2" (12.7 mm.)

| CHARACTERISTICS | TYPE | EXEC. | No. of TEETH | Dp PITCH LINE | De EXTERNAL | Df FLANGE | Dm HUB | F | L | d | FLANGE No. | |
|-----------------|----------------|-----------|--------------|---------------|-------------|-----------|--------|-----|------|----|------------|-----|
| STEEL | WITH FLANGE | 14 H 200 | 1F | 14 | 56.59 | 55.22 | 64.0 | 42 | 58.7 | 70 | - | 59 |
| | | 15 H 200 | 1F | 15 | 60.64 | 59.27 | 66.5 | 45 | 58.7 | 70 | - | 60 |
| | | 16 H 200 | 1F | 16 | 64.67 | 63.31 | 70.0 | 45 | 58.7 | 70 | - | 61 |
| | | 17 H 200 | 1F | 17 | 68.72 | 67.35 | 75.0 | 45 | 58.7 | 70 | - | 62 |
| | | 18 H 200 | 1F | 18 | 72.77 | 71.39 | 79.0 | 55 | 58.7 | 70 | - | 63 |
| | | 19 H 200 | 1F | 19 | 76.81 | 75.44 | 82.5 | 60 | 58.7 | 70 | - | 64 |
| | | 20 H 200 | 1F | 20 | 80.85 | 79.48 | 87.0 | 62 | 58.7 | 70 | - | 76 |
| | | 21 H 200 | 1F | 21 | 84.89 | 83.52 | 91.0 | 65 | 58.7 | 70 | - | 66 |
| | | 22 H 200 | 1F | 22 | 88.93 | 87.56 | 94.0 | 68 | 58.7 | 70 | - | 67 |
| | | 23 H 200 | 1F | 23 | 92.98 | 91.61 | 97.0 | 72 | 58.7 | 70 | - | 68 |
| | | 24 H 200 | 1F | 24 | 97.03 | 95.65 | 102.0 | 72 | 58.7 | 70 | - | 70 |
| | | 25 H 200 | 1F | 25 | 101.06 | 99.69 | 106.0 | 72 | 58.7 | 70 | - | 71 |
| | | 26 H 200 | 1F | 26 | 105.11 | 103.73 | 112.0 | 80 | 58.7 | 70 | - | 72 |
| | | 27 H 200 | 1F | 27 | 109.15 | 107.78 | 115.0 | 80 | 58.7 | 70 | - | 74 |
| | | 28 H 200 | 1F | 28 | 113.18 | 111.82 | 120.0 | 80 | 58.7 | 70 | - | 75 |
| | | 29 H 200 | 1F | 29 | 117.23 | 115.86 | 120.0 | 80 | 58.7 | 70 | - | 75 |
| | | 30 H 200 | 1F | 30 | 121.29 | 119.90 | 128.0 | 80 | 58.7 | 70 | - | 78 |
| | | 32 H 200 | 1F | 32 | 129.30 | 127.99 | 135.0 | 80 | 58.7 | 70 | - | 80 |
| | | 33 H 200 | 1F | 33 | 133.40 | 132.03 | 142.0 | 80 | 58.7 | 70 | - | 81 |
| | | 34 H 200 | 1F | 34 | 137.45 | 136.07 | 142.0 | 80 | 58.7 | 70 | - | 81 |
| | | 35 H 200 | 1F | 35 | 141.49 | 140.12 | 150.0 | 80 | 58.7 | 70 | - | 85 |
| | | 36 H 200 | 1F | 36 | 145.54 | 144.16 | 150.0 | 80 | 58.7 | 70 | - | 85 |
| | | 38 H 200 | 1F | 38 | 153.62 | 152.24 | 158.0 | 80 | 58.7 | 70 | - | 86 |
| | | 40 H 200 | 1F | 40 | 161.70 | 160.33 | 168.0 | 80 | 58.7 | 70 | - | 90 |
| 42 H 200 | 1F | 42 | 169.79 | 168.41 | 180.0 | 80 | 58.7 | 70 | - | 94 | | |
| CAST-IRON | WITH FLANGE | 44 H 200 | 5F | 44 | 177.88 | 176.50 | 184.0 | 80 | 58.7 | 70 | 19 | 95 |
| | | 45 H 200 | 5F | 45 | 181.91 | 180.54 | 192.0 | 80 | 58.7 | 70 | 19 | 96 |
| | | 48 H 200 | 5F | 48 | 194.03 | 192.67 | 200.0 | 90 | 58.7 | 75 | 24 | 100 |
| | WITHOUT FLANGE | 50 H 200 | 4 | 50 | 202.13 | 200.75 | - | 90 | 58.7 | 75 | 24 | - |
| | | 52 H 200 | 4 | 52 | 210.21 | 208.84 | - | 90 | 58.7 | 75 | 24 | - |
| | | 58 H 200 | 4 | 58 | 234.47 | 233.09 | - | 90 | 58.7 | 75 | 24 | - |
| | | 60 H 200 | 4 | 60 | 242.55 | 241.18 | - | 120 | 58.7 | 75 | 24 | - |
| | | 70 H 200 | 4 | 70 | 282.98 | 281.61 | - | 120 | 58.7 | 75 | 28 | - |
| | | 72 H 200 | 4 | 72 | 291.06 | 289.69 | - | 120 | 58.7 | 75 | 28 | - |
| | | 84 H 200 | 4 | 84 | 339.57 | 338.20 | - | 120 | 58.7 | 75 | 28 | - |
| | | 96 H 200 | 4 | 96 | 388.09 | 386.71 | - | 120 | 58.7 | 75 | 28 | - |
| | | 120 H 200 | 4 | 120 | 485.12 | 483.73 | - | 120 | 58.7 | 75 | 28 | - |

POWERGRIP® TOOTHED PULLEYS FOR SYNCHRONOUS BELTS



execution 1F

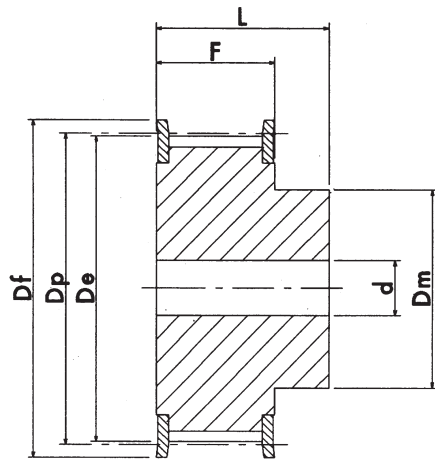


execution 4

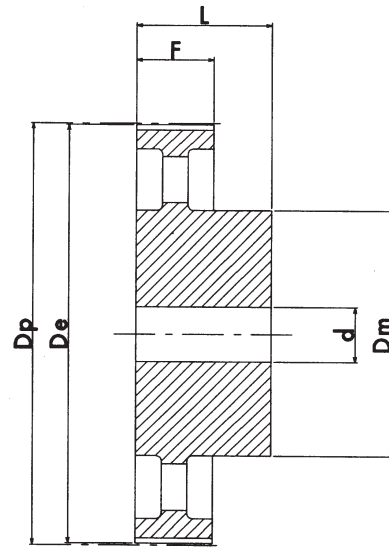
TIPO: H 300 PASSO 1/2" (12.7 mm.)

| CHARACTERISTICS | TYPE | EXEC. | No. of TEETH | Dp PITCH LINE | De EXTERNAL | Df FLANGE | Dm HUB | F | L | d | FLANGE No. | |
|-----------------|----------------|-----------|--------------|---------------|-------------|-----------|--------|-----|------|-----|------------|----|
| STEEL | WITH FLANGE | 14 H 300 | 1F | 14 | 56.59 | 55.22 | 64.0 | 42 | 85.7 | 100 | - | 59 |
| | | 15 H 300 | 1F | 15 | 60.64 | 59.27 | 66.5 | 45 | 85.7 | 100 | - | 60 |
| | | 16 H 300 | 1F | 16 | 64.67 | 63.31 | 70.0 | 45 | 85.7 | 100 | - | 61 |
| | | 17 H 300 | 1F | 17 | 68.72 | 67.35 | 75.0 | 45 | 85.7 | 100 | - | 62 |
| | | 18 H 300 | 1F | 18 | 72.77 | 71.39 | 79.0 | 55 | 85.7 | 100 | - | 63 |
| | | 19 H 300 | 1F | 19 | 76.81 | 75.44 | 82.5 | 60 | 85.7 | 100 | - | 64 |
| | | 20 H 300 | 1F | 20 | 80.85 | 79.48 | 87.0 | 62 | 85.7 | 100 | - | 76 |
| | | 21 H 300 | 1F | 21 | 84.89 | 83.52 | 91.0 | 65 | 85.7 | 100 | - | 66 |
| | | 22 H 300 | 1F | 22 | 88.93 | 87.56 | 94.0 | 68 | 85.7 | 100 | - | 67 |
| | | 23 H 300 | 1F | 23 | 92.98 | 91.61 | 97.0 | 72 | 85.7 | 100 | - | 68 |
| | | 24 H 300 | 1F | 24 | 97.03 | 95.65 | 102.0 | 72 | 85.7 | 100 | - | 70 |
| | | 25 H 300 | 1F | 25 | 101.06 | 99.69 | 106.0 | 72 | 85.7 | 100 | - | 71 |
| | | 26 H 300 | 1F | 26 | 105.11 | 103.73 | 112.0 | 80 | 85.7 | 100 | - | 72 |
| | | 27 H 300 | 1F | 27 | 109.15 | 107.78 | 115.0 | 80 | 85.7 | 100 | - | 74 |
| | | 28 H 300 | 1F | 28 | 113.18 | 111.82 | 120.0 | 80 | 85.7 | 100 | - | 75 |
| | | 30 H 300 | 1F | 30 | 121.29 | 119.90 | 128.0 | 80 | 85.7 | 100 | - | 78 |
| | | 32 H 300 | 1F | 32 | 129.30 | 127.99 | 135.0 | 80 | 85.7 | 100 | - | 80 |
| | | 33 H 300 | 1F | 33 | 133.40 | 132.03 | 142.0 | 80 | 85.7 | 100 | - | 81 |
| | | 34 H 300 | 1F | 34 | 137.45 | 136.07 | 142.0 | 80 | 85.7 | 100 | - | 81 |
| | | 35 H 300 | 1F | 35 | 141.49 | 140.12 | 150.0 | 80 | 85.7 | 100 | - | 85 |
| 36 H 300 | 1F | 36 | 145.54 | 144.16 | 150.0 | 80 | 85.7 | 100 | - | 85 | | |
| 38 H 300 | 1F | 38 | 153.62 | 152.24 | 158.0 | 80 | 85.7 | 100 | - | 86 | | |
| 40 H 300 | 1F | 40 | 161.70 | 160.33 | 168.0 | 80 | 85.7 | 100 | - | 90 | | |
| 42 H 300 | 1F | 42 | 169.79 | 168.41 | 180.0 | 80 | 85.7 | 100 | - | 94 | | |
| CAST-IRON | WITHOUT FLANGE | 44 H 300 | 4 | 44 | 177.88 | 176.50 | - | 80 | 85.7 | 100 | 24 | - |
| | | 48 H 300 | 4 | 48 | 194.03 | 192.67 | - | 90 | 85.7 | 100 | 24 | - |
| | | 50 H 300 | 4 | 50 | 202.13 | 200.75 | - | 90 | 85.7 | 100 | 24 | - |
| | | 58 H 300 | 4 | 58 | 234.47 | 233.09 | - | 90 | 85.7 | 100 | 24 | - |
| | | 60 H 300 | 4 | 60 | 242.55 | 241.18 | - | 120 | 85.7 | 100 | 24 | - |
| | | 72 H 300 | 4 | 72 | 291.06 | 289.69 | - | 120 | 85.7 | 100 | 28 | - |
| | | 84 H 300 | 4 | 84 | 339.57 | 338.20 | - | 120 | 85.7 | 100 | 28 | - |
| | | 96 H 300 | 4 | 96 | 388.09 | 386.71 | - | 120 | 85.7 | 100 | 28 | - |
| | | 120 H 300 | 4 | 120 | 485.12 | 483.73 | - | 120 | 85.7 | 100 | 28 | - |

POWERGRIP® TOOTHED PULLEYS FOR SYNCHRONOUS BELTS



execution 1F



execution 4

* Toothings marked with an asterisk are produced on request

XH 200 PITCH 7/8" (22.22mm.)

| CHARACTERISTICS | | TYPE | EXEC. | No. of TEETH | Dp PITCH LINE | De EXTERNAL | Df FLANGE | Dm HUB | F | L | d | FLANGE No. |
|-----------------|-------------|-----------|----------------|--------------|---------------|-------------|-----------|--------|----|-----|----|------------|
| STEEL | WITH FLANGE | 18 XH 200 | 1F | 18 | 127.34 | 124.55 | 140.0 | 100 | 65 | 80 | 24 | 155 |
| | | 19 XH 200 | 1F | 19 | 134.41 | 131.62 | 146.0 | 100 | 65 | 80 | 24 | 156 |
| | | 20 XH 200 | 1F | 20 | 141.49 | 138.69 | 155.0 | 100 | 65 | 80 | 24 | 157 |
| | | 21 XH 200 | 1F | 21 | 148.56 | 145.77 | 160.0 | 110 | 65 | 80 | 24 | 158 |
| | | 22 XH 200 | 1F | 22 | 155.64 | 152.84 | 170.0 | 110 | 65 | 80 | 24 | 159 |
| | | 24 XH 200 | 1F | 24 | 169.79 | 166.99 | 184.0 | 120 | 65 | 80 | 24 | 161 |
| | | 25 XH 200 | 1F | 25 | 176.86 | 174.07 | 188.0 | 120 | 65 | 80 | 24 | 162 |
| | | 26 XH 200 | 1F | 26 | 183.93 | 181.14 | 198.0 | 120 | 65 | 80 | 24 | 163 |
| | | 27 XH 200 | 1F | 27 | 191.01 | 188.22 | 205.0 | 120 | 65 | 80 | 24 | 164 |
| | | 28 XH 200 | 1F | 28 | 198.09 | 195.29 | 212.0 | 120 | 65 | 80 | 24 | 165 |
| | | 30 XH 200 | 1F | 30 | 212.23 | 209.44 | 227.0 | 120 | 65 | 80 | 24 | 167 |
| | | 32 XH 200 | 1F | 32 | 226.38 | 223.59 | 240.0 | 120 | 65 | 80 | 24 | 169 |
| | | 34 XH 200 | 1F | 34 | 240.53 | 237.74 | 256.0 | 120 | 65 | 80 | 24 | 170 |
| | | CAST-IRON | WITHOUT FLANGE | *38 XH 200 | 4 | 38 | 268.83 | 266.03 | - | 150 | 65 | 80 |
| *40 XH 200 | 4 | | | 40 | 282.98 | 280.18 | - | 150 | 65 | 100 | 28 | - |
| *48 XH 200 | 4 | | | 48 | 339.57 | 336.78 | - | 150 | 65 | 100 | 28 | - |
| *60 XH 200 | 4 | | | 60 | 424.47 | 421.67 | - | 150 | 65 | 100 | 28 | - |
| *72 XH 200 | 4 | | | 72 | 509.36 | 506.56 | - | 160 | 65 | 100 | 28 | - |
| *84 XH 200 | 4 | | | 84 | 594.25 | 591.46 | - | 160 | 65 | 100 | 28 | - |
| *96 XH 200 | 4 | | | 96 | 679.15 | 676.35 | - | 160 | 65 | 100 | 28 | - |
| *120 XH 200 | 4 | | | 120 | 848.93 | 846.14 | - | 160 | 65 | 100 | 28 | - |

POWERGRIP® TOOTHED PULLEYS FOR SYNCHRONOUS BELTS

XH 300 PITCH 7/8" (22.22mm.)

| CHARACTERISTICS | | TYPE | EXEC. | No. of TEETH | Dp PITCH LINE | De EXTERNAL | Df FLANGE | Dm HUB | F | L | d | FLANGE No. |
|-----------------|-------------|-----------|----------------|--------------|---------------|-------------|-----------|--------|------|-----|------|------------|
| STEEL | WITH FLANGE | 18 XH 300 | 1F | 18 | 127.34 | 124.55 | 140.0 | 100 | 90.5 | 110 | 28 | 155 |
| | | 19 XH 300 | 1F | 19 | 134.41 | 131.62 | 146.0 | 100 | 90.5 | 110 | 28 | 156 |
| | | 20 XH 300 | 1F | 20 | 141.49 | 138.69 | 155.0 | 100 | 90.5 | 110 | 28 | 157 |
| | | 21 XH 300 | 1F | 21 | 148.56 | 145.77 | 160.0 | 110 | 90.5 | 110 | 28 | 158 |
| | | 22 XH 300 | 1F | 22 | 155.64 | 152.84 | 170.0 | 110 | 90.5 | 110 | 28 | 159 |
| | | 24 XH 300 | 1F | 24 | 169.79 | 166.99 | 184.0 | 120 | 90.5 | 110 | 28 | 161 |
| | | 25 XH 300 | 1F | 25 | 176.86 | 174.07 | 188.0 | 120 | 90.5 | 110 | 28 | 162 |
| | | 26 XH 300 | 1F | 26 | 183.93 | 181.14 | 198.0 | 120 | 90.5 | 110 | 28 | 163 |
| | | 27 XH 300 | 1F | 27 | 191.01 | 188.22 | 205.0 | 120 | 90.5 | 110 | 28 | 164 |
| | | 28 XH 300 | 1F | 28 | 198.09 | 195.29 | 212.0 | 150 | 90.5 | 110 | 28 | 165 |
| | | 30 XH 300 | 1F | 30 | 212.23 | 209.44 | 227.0 | 150 | 90.5 | 110 | 28 | 167 |
| | | 32 XH 300 | 1F | 32 | 226.38 | 223.59 | 240.0 | 150 | 90.5 | 110 | 28 | 169 |
| | | 34 XH 300 | 1F | 34 | 240.53 | 237.74 | 256.0 | 150 | 90.5 | 110 | 28 | 170 |
| | | CAST-IRON | WITHOUT FLANGE | *38 XH 300 | 4 | 38 | 268.83 | 266.03 | - | 150 | 90.5 | 120 |
| *40 XH 300 | 4 | | | 40 | 282.98 | 280.18 | - | 150 | 90.5 | 120 | 32 | - |
| *48 XH 300 | 4 | | | 48 | 339.57 | 336.78 | - | 175 | 90.5 | 120 | 32 | - |
| *60 XH 300 | 4 | | | 60 | 424.47 | 421.67 | - | 175 | 90.5 | 120 | 32 | - |
| *72 XH 300 | 4 | | | 72 | 509.36 | 506.56 | - | 175 | 90.5 | 120 | 32 | - |
| *84 XH 300 | 4 | | | 84 | 594.25 | 591.46 | - | 175 | 90.5 | 120 | 32 | - |
| *96 XH 300 | 4 | | | 96 | 679.15 | 676.35 | - | 175 | 90.5 | 120 | 32 | - |
| *120 XH 300 | 4 | | | 120 | 848.93 | 846.14 | - | 175 | 90.5 | 120 | 32 | - |

* Tothing marked with an asterisk are produced on request

XH 400 PITCH 7/8" (22.22mm.)

| CHARACTERISTICS | | TYPE | EXEC. | No. of TEETH | Dp PITCH LINE | De EXTERNAL | Df FLANGE | Dm HUB | F | L | d | FLANGE No. |
|-----------------|-------------|-----------|----------------|--------------|---------------|-------------|-----------|--------|-----|-----|-----|------------|
| STEEL | WITH FLANGE | 18 XH 400 | 1F | 18 | 127.34 | 124.55 | 140.0 | 100 | 118 | 132 | 32 | 155 |
| | | 19 XH 400 | 1F | 19 | 134.41 | 131.62 | 146.0 | 100 | 118 | 132 | 32 | 156 |
| | | 20 XH 400 | 1F | 20 | 141.49 | 138.69 | 155.0 | 100 | 118 | 132 | 32 | 157 |
| | | 21 XH 400 | 1F | 21 | 148.56 | 145.77 | 160.0 | 110 | 118 | 132 | 32 | 158 |
| | | 22 XH 400 | 1F | 22 | 155.64 | 152.84 | 170.0 | 110 | 118 | 132 | 32 | 159 |
| | | 24 XH 400 | 1F | 24 | 169.79 | 166.99 | 184.0 | 120 | 118 | 132 | 32 | 161 |
| | | 25 XH 400 | 1F | 25 | 176.86 | 174.07 | 188.0 | 120 | 118 | 132 | 32 | 162 |
| | | 26 XH 400 | 1F | 26 | 183.93 | 181.14 | 198.0 | 120 | 118 | 132 | 32 | 163 |
| | | 27 XH 400 | 1F | 27 | 191.01 | 188.22 | 205.0 | 120 | 118 | 132 | 32 | 164 |
| | | 28 XH 400 | 1F | 28 | 198.09 | 195.29 | 212.0 | 150 | 118 | 132 | 32 | 165 |
| | | 30 XH 400 | 1F | 30 | 212.23 | 209.44 | 227.0 | 150 | 118 | 132 | 32 | 167 |
| | | 32 XH 400 | 1F | 32 | 226.38 | 223.59 | 240.0 | 150 | 118 | 132 | 32 | 169 |
| | | 34 XH 400 | 1F | 34 | 240.53 | 237.74 | 256.0 | 150 | 118 | 132 | 32 | 170 |
| | | CAST-IRON | WITHOUT FLANGE | *38 XH 400 | 4 | 38 | 268.83 | 266.03 | - | 150 | 118 | 132 |
| *40 XH 400 | 4 | | | 40 | 282.98 | 280.18 | - | 150 | 118 | 132 | 32 | - |
| *48 XH 400 | 4 | | | 48 | 339.57 | 336.78 | - | 175 | 118 | 132 | 32 | - |
| *60 XH 400 | 4 | | | 60 | 424.47 | 421.67 | - | 175 | 118 | 132 | 32 | - |
| *72 XH 400 | 4 | | | 72 | 509.36 | 506.56 | - | 175 | 118 | 132 | 32 | - |
| *84 XH 400 | 4 | | | 84 | 594.25 | 591.46 | - | 175 | 118 | 132 | 32 | - |
| *96 XH 400 | 4 | | | 96 | 679.15 | 676.35 | - | 175 | 118 | 132 | 32 | - |
| *120 XH 400 | 4 | | | 120 | 848.93 | 846.14 | - | 175 | 118 | 132 | 32 | - |

POWERGRIP® TOOTHED PULLEYS FOR SYNCHRONOUS BELTS

XXH 200 PITCH 1" 1/4 (31.75mm.)

| CHARACTERISTICS | | TYPE | EXEC. | No. of TEETH | Dp PITCH LINE | De EXTERNAL | Df FLANGE | Dm HUB | F | L | d | FLANGE No. |
|-----------------|----------------|-------------|-------|--------------|---------------|-------------|-----------|--------|------|-----|----|------------|
| STEEL | WITH FLANGE | 18 XXH 200 | 1F | 18 | 181.91 | 178.87 | 198.0 | 140 | 64.2 | 100 | 28 | 163 |
| | | 20 XXH 200 | 1F | 20 | 202.13 | 199.08 | 212.0 | 150 | 64.2 | 100 | 28 | 165 |
| | | 22 XXH 200 | 1F | 22 | 222.34 | 219.29 | 240.0 | 150 | 64.2 | 100 | 28 | 169 |
| | | 24 XXH 200 | 1F | 24 | 242.55 | 239.50 | 267.0 | 150 | 64.2 | 100 | 28 | 173 |
| | | 26 XXH 200 | 1F | 26 | 262.76 | 259.79 | 290.0 | 150 | 64.2 | 100 | 28 | 178 |
| CAST-IRON | WITHOUT FLANGE | *30 XXH 200 | 4 | 30 | 303.19 | 300.14 | - | 150 | 64.2 | 100 | 28 | - |
| | | *40 XXH 200 | 4 | 40 | 404.25 | 401.21 | - | 150 | 64.2 | 100 | 28 | - |
| | | *48 XXH 200 | 4 | 48 | 485.10 | 482.06 | - | 175 | 64.2 | 120 | 32 | - |
| | | *60 XXH 200 | 4 | 60 | 606.38 | 603.33 | - | 175 | 64.2 | 120 | 32 | - |
| | | *72 XXH 200 | 4 | 72 | 727.66 | 724.61 | - | 175 | 64.2 | 120 | 38 | - |
| | | *90 XXH 200 | 4 | 90 | 909.57 | 906.52 | - | 175 | 64.2 | 120 | 38 | - |

* Toothings marked with the asterisk are produced on request

XXH 300 PITCH 1" 1/4 (mm 31.75)

| CHARACTERISTICS | | TYPE | EXEC. | No. of TEETH | Dp PITCH LINE | De EXTERNAL | Df FLANGE | Dm HUB | F | L | d | FLANGE No. |
|-----------------|----------------|-------------|-------|--------------|---------------|-------------|-----------|--------|------|-----|----|------------|
| STEEL | WITH FLANGE | 18 XXH 300 | 1F | 18 | 181.91 | 178.87 | 198.0 | 140 | 91.4 | 110 | 28 | 163 |
| | | 20 XXH 300 | 1F | 20 | 202.13 | 199.08 | 212.0 | 150 | 91.4 | 110 | 28 | 165 |
| | | 22 XXH 300 | 1F | 22 | 222.34 | 219.29 | 240.0 | 150 | 91.4 | 110 | 28 | 169 |
| | | 24 XXH 300 | 1F | 24 | 242.55 | 239.50 | 267.0 | 150 | 91.4 | 110 | 28 | 173 |
| | | 26 XXH 300 | 1F | 26 | 262.76 | 259.79 | 290.0 | 150 | 91.4 | 110 | 28 | 178 |
| CAST-IRON | WITHOUT FLANGE | *30 XXH 300 | 4 | 30 | 303.19 | 300.14 | - | 150 | 91.4 | 110 | 28 | - |
| | | *40 XXH 300 | 4 | 40 | 404.25 | 401.21 | - | 150 | 91.4 | 110 | 28 | - |
| | | *48 XXH 300 | 4 | 48 | 485.10 | 482.06 | - | 175 | 91.4 | 120 | 32 | - |
| | | *60 XXH 300 | 4 | 60 | 606.38 | 603.33 | - | 175 | 91.4 | 120 | 32 | - |
| | | *72 XXH 300 | 4 | 72 | 727.66 | 724.61 | - | 175 | 91.4 | 120 | 38 | - |
| | | *90 XXH 300 | 4 | 90 | 909.57 | 906.52 | - | 175 | 91.4 | 120 | 38 | - |

POWERGRIP® TOOTHED PULLEYS FOR SYNCHRONOUS BELTS

XXH 400 PITCH 1" 1/4 (31.75mm.)

| CHARACTERISTICS | | TYPE | EXEC. | No. of TEETH | Dp PITCH LINE | De EXTERNAL | Df FLANGE | Dm HUB | F | L | d | FLANGE No. |
|-----------------|----------------|-------------|-------|--------------|---------------|-------------|-----------|--------|-------|-----|----|------------|
| STEEL | WITH FLANGE | 18 XXH 400 | 1F | 18 | 181.91 | 178.87 | 198.0 | 140 | 118.2 | 140 | 32 | 163 |
| | | 20 XXH 400 | 1F | 20 | 202.13 | 199.08 | 212.0 | 150 | 118.2 | 140 | 32 | 165 |
| | | 22 XXH 400 | 1F | 22 | 222.34 | 219.29 | 240.0 | 150 | 118.2 | 140 | 32 | 169 |
| | | 24 XXH 400 | 1F | 24 | 242.55 | 239.50 | 267.0 | 150 | 118.2 | 140 | 32 | 173 |
| | | 26 XXH 400 | 1F | 26 | 262.76 | 259.79 | 290.0 | 150 | 118.2 | 140 | 32 | 178 |
| CAST-IRON | WITHOUT FLANGE | *30 XXH 400 | 4 | 30 | 303.19 | 300.14 | - | 185 | 118.2 | 140 | 32 | - |
| | | *40 XXH 400 | 4 | 40 | 404.25 | 401.21 | - | 185 | 118.2 | 140 | 32 | - |
| | | *48 XXH 400 | 4 | 48 | 485.10 | 482.06 | - | 185 | 118.2 | 140 | 38 | - |
| | | *60 XXH 400 | 4 | 60 | 606.38 | 603.33 | - | 185 | 118.2 | 140 | 38 | - |
| | | *72 XXH 400 | 4 | 72 | 727.66 | 724.61 | - | 220 | 118.2 | 140 | 38 | - |
| | | *90 XXH 400 | 4 | 90 | 909.57 | 906.52 | - | 220 | 118.2 | 140 | 38 | - |

* Toothings marked with the asterisk are produced on request

XXH 500 PITCH 1" 1/4 (mm 31.75)

| CHARACTERISTICS | | TYPE | EXEC. | No. of TEETH | Dp PITCH LINE | De EXTERNAL | Df FLANGE | Dm HUB | F | L | d | FLANGE No. |
|-----------------|----------------|-------------|-------|--------------|---------------|-------------|-----------|--------|-------|-----|----|------------|
| STEEL | WITH FLANGE | 18 XXH 500 | 1F | 18 | 181.91 | 178.87 | 198.0 | 140 | 145.3 | 168 | 32 | 163 |
| | | 20 XXH 500 | 1F | 20 | 202.13 | 199.08 | 212.0 | 150 | 145.3 | 168 | 32 | 165 |
| | | 22 XXH 500 | 1F | 22 | 222.34 | 219.29 | 240.0 | 150 | 145.3 | 168 | 32 | 169 |
| | | 24 XXH 500 | 1F | 24 | 242.55 | 239.50 | 267.0 | 150 | 145.3 | 168 | 32 | 173 |
| | | 26 XXH 500 | 1F | 26 | 262.76 | 259.79 | 290.0 | 150 | 145.3 | 168 | 32 | 178 |
| CAST-IRON | WITHOUT FLANGE | *30 XXH 500 | 4 | 30 | 303.19 | 300.14 | - | 215 | 145.3 | 168 | 32 | - |
| | | *40 XXH 500 | 4 | 40 | 404.25 | 401.21 | - | 215 | 145.3 | 168 | 32 | - |
| | | *48 XXH 500 | 4 | 48 | 485.10 | 482.06 | - | 215 | 145.3 | 168 | 38 | - |
| | | *60 XXH 500 | 4 | 60 | 606.38 | 603.33 | - | 240 | 145.3 | 168 | 38 | - |
| | | *72 XXH 500 | 4 | 72 | 727.66 | 724.61 | - | 240 | 145.3 | 168 | 38 | - |
| | | *90 XXH 500 | 4 | 90 | 909.57 | 906.52 | - | 240 | 145.3 | 168 | 38 | - |