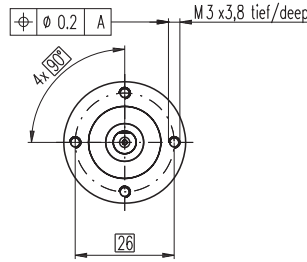
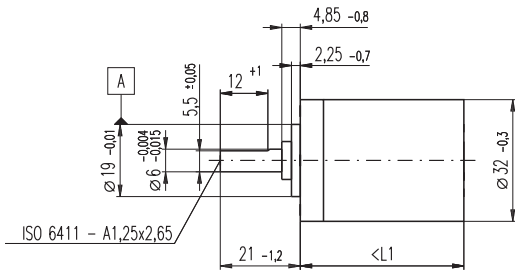


Planetary Gearhead GP 32 A $\varnothing 32$ mm, 0.75 - 4.5 Nm



M 1:2

Technical Data

Planetary Gearhead	straight teeth
Output shaft	stainless steel
Shaft diameter as option	8 mm
Bearing at output	ball bearing
Radial play, 5 mm from flange	max. 0.14 mm
Axial play	max. 0.4 mm
Max. radial load, 10 mm from flange	140 N
Max. permissible axial load	120 N
Max. permissible force for press fits	120 N
Sense of rotation, drive to output	=
Recommended input speed	< 6000 rpm
Recommended temperature range	-20 ... +100°C
Extended area as option	-35 ... +100°C

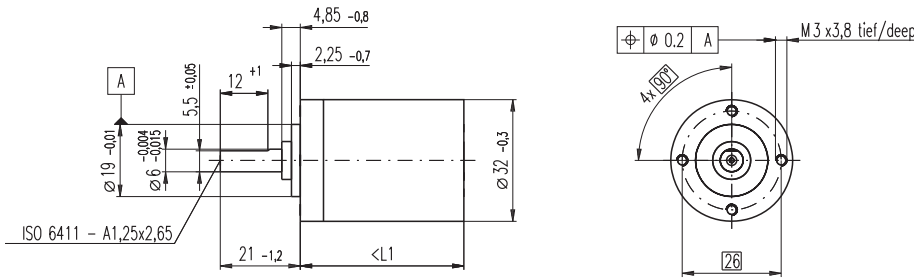
Option: Low-noise version

	Order Number											
	166155	166158	166163	166164	166169	166174	166179	166184	166187	166192	166197	166202
Stock program												
Standard program												
Special program (on request)												
Gearhead Data												
1 Reduction	3.7 : 1	14 : 1	33 : 1	51 : 1	111 : 1	246 : 1	492 : 1	762 : 1	1181 : 1	1972 : 1	2829 : 1	4380 : 1
2 Reduction absolute	26/7	676/49	529/16	17576/343	13824/125	421824/1715	86112/175	19044/25	1012376/6575	8626176/4375	495144/175	109503/25
3 Max. motor shaft diameter mm	6	6	3	6	4	4	3	3	4	4	3	3
Order Number	166156	166159		166165	166170	166175	166180	166185	166188	166193	166198	166203
1 Reduction	4.8 : 1	18 : 1		66 : 1	123 : 1	295 : 1	531 : 1	913 : 1	1414 : 1	2189 : 1	3052 : 1	5247 : 1
2 Reduction absolute	24/5	624/35		16224/245	6877/56	101062/343	331776/625	36501/40	2425488/1715	536406/245	1907712/625	839523/160
3 Max. motor shaft diameter mm	4	4		4	3	3	4	3	3	3	3	3
Order Number	166157	166160		166166	166171	166176	166181	166186	166189	166194	166199	166204
1 Reduction	5.8 : 1	21 : 1		79 : 1	132 : 1	318 : 1	589 : 1	1093 : 1	1526 : 1	2362 : 1	3389 : 1	6285 : 1
2 Reduction absolute	23/4	299/14		3887/49	3312/25	389376/1225	20631/35	279841/256	9345024/6125	2066688/375	474513/140	6436343/1024
3 Max. motor shaft diameter mm	3	3		3	3	4	3	3	4	3	3	3
Order Number		166161		166167	166172	166177	166182		166190	166195	166200	
1 Reduction		23 : 1		86 : 1	159 : 1	411 : 1	636 : 1		1694 : 1	2548 : 1	3656 : 1	
2 Reduction absolute		576/25		14976/175	1587/10	359424/875	79488/125		1162213/686	7962624/3125	457056/125	
3 Max. motor shaft diameter mm		4		4	3	4	3		3	4	3	
Order Number		166162		166168	166173	166178	166183		166191	166196	166201	
1 Reduction		28 : 1		103 : 1	190 : 1	456 : 1	706 : 1		1828 : 1	2623 : 1	4060 : 1	
2 Reduction absolute		138/5		3588/35	12167/64	89401/196	158171/224		2238912/1225	2056223/784	3637933/896	
3 Max. motor shaft diameter mm		3		3	3	3	3		3	3	3	
4 Number of stages		1		2	2	3	3		4	4	5	5
5 Max. continuous torque Nm		0.75		2.25	2.25	4.50	4.50		4.50	4.50	4.50	4.50
6 Intermittently permissible torque at gear output Nm		1.1		3.4	3.4	6.5	6.5		6.5	6.5	6.5	6.5
7 Max. efficiency %		80		75	75	70	70		60	60	50	50
8 Weight g		118		162	162	194	194		226	226	258	258
9 Average backlash no load °		0.7		0.8	0.8	1.0	1.0		1.0	1.0	1.0	1.0
10 Mass inertia gcm ²		1.5		0.8	0.8	0.7	0.7		0.7	0.7	0.7	0.7
11 Gearhead length L1 mm		26.4		36.3	36.3	43.0	43.0		49.7	49.7	56.4	56.4



maxon Modular System															
+ Motor	Page	+ Sensor / Brake	Page	Overall length [mm] = Motor length + gearhead length + (sensor / brake) + assembly parts											
RE 25	77/79			81.0	90.9	90.9	97.6	97.6	104.3	104.3	104.3	111.0	111.0	111.0	111.0
RE 25	77/79	MR	264	92.0	101.9	101.9	108.6	108.6	115.3	115.3	115.3	122.0	122.0	122.0	122.0
RE 25	77/79	Enc 22	266	95.1	105.0	105.0	111.7	111.7	118.4	118.4	118.4	125.1	125.1	125.1	125.1
RE 25	77/79	HED_ 5540	268/270	101.8	111.7	111.7	118.4	118.4	125.1	125.1	125.1	131.8	131.8	131.8	131.8
RE 25	77/79	DCT 22	277	103.3	113.2	113.2	119.9	119.9	126.6	126.6	126.6	133.3	133.3	133.3	133.3
RE 25, 20 W	78			69.5	79.4	79.4	86.1	86.1	92.8	92.8	92.8	99.5	99.5	99.5	99.5
RE 25, 20 W	78	MR	264	80.5	90.4	90.4	97.1	97.1	103.8	103.8	103.8	110.5	110.5	110.5	110.5
RE 25, 20 W	78	HED_ 5540	269/272	90.3	100.2	100.2	106.9	106.9	113.6	113.6	113.6	120.3	120.3	120.3	120.3
RE 25, 20 W	78	DCT22	277	91.8	101.7	101.7	108.4	108.4	115.1	115.1	115.1	121.8	121.8	121.8	121.8
RE 25, 20 W	78	AB 28	316	103.6	113.5	113.5	120.2	120.2	126.9	126.9	126.9	133.6	133.6	133.6	133.6
RE 25, 20 W	78	HED_ 5540 / AB 28	269/316	120.8	130.7	130.7	137.4	137.4	144.1	144.1	144.1	150.8	150.8	150.8	150.8
RE 25, 20 W	79	AB 28	316	115.1	125.0	125.0	131.7	131.7	138.4	138.4	138.4	145.1	145.1	145.1	145.1
RE 25, 20 W	79	HED_ 5540/AB 28	268/316	132.2	142.1	142.1	148.8	148.8	155.5	155.5	155.5	162.2	162.2	162.2	162.2
A-max 26	105-112			71.2	81.1	81.1	87.8	87.8	94.5	94.5	94.5	101.2	101.2	101.2	101.2
A-max 26	106-112	MEnc 13	276	78.3	88.2	88.2	94.9	94.9	101.6	101.6	101.6	108.3	108.3	108.3	108.3
A-max 26	106-112	MR	264	80.0	89.9	89.9	96.6	96.6	103.3	103.3	103.3	110.0	110.0	110.0	110.0
A-max 26	106-112	Enc 22	267	85.6	95.5	95.5	102.2	102.2	108.9	108.9	108.9	115.6	115.6	115.6	115.6
A-max 26	106-112	HED_ 5540	269/271	90.0	99.9	99.9	106.6	106.6	113.3	113.3	113.3	120.0	120.0	120.0	120.0
RE-max 29	135-138			71.2	81.1	81.1	87.8	87.8	94.5	94.5	94.5	101.2	101.2	101.2	101.2
RE-max 29	136/138	MR	264	80.0	89.9	89.9	96.6	96.6	103.3	103.3	103.3	110.0	110.0	110.0	110.0

Planetary Gearhead GP 32 A $\varnothing 32$ mm, 0.75 - 4.5 Nm



Technical Data

Planetary Gearhead	straight teeth
Output shaft	stainless steel
Shaft diameter as option	8 mm
Bearing at output	ball bearing
Radial play, 5 mm from flange	max. 0.14 mm
Axial play	max. 0.4 mm
Max. radial load, 10 mm from flange	140 N
Max. permissible axial load	120 N
Max. permissible force for press fits	120 N
Sense of rotation, drive to output	=
Recommended input speed	< 6000 rpm
Recommended temperature range	-20 ... +100°C
Extended area as option	-35 ... +100°C

M 1:2

Option: Low-noise version

Gearhead Data	Order Number											
	166155	166158	166163	166164	166169	166174	166179	166184	166187	166192	166197	166202
1 Reduction	3.7 : 1	14 : 1	33 : 1	51 : 1	111 : 1	246 : 1	492 : 1	762 : 1	1181 : 1	1972 : 1	2829 : 1	4380 : 1
2 Reduction absolute	26/7	676/49	529/16	17576/343	13824/125	421824/1715	86112/175	19044/25	1012376/6575	8626176/4375	495144/175	109503/25
3 Max. motor shaft diameter	mm 6	6	3	6	4	4	3	3	4	4	3	3
Order Number	166156	166159		166165	166170	166175	166180	166185	166188	166193	166198	166203
1 Reduction	4.8 : 1	18 : 1		66 : 1	123 : 1	295 : 1	531 : 1	913 : 1	1414 : 1	2189 : 1	3052 : 1	5247 : 1
2 Reduction absolute	24/5	624/35		16224/245	6877/56	101062/343	331776/625	36501/40	2425488/1715	536406/245	1907712/625	839523/160
3 Max. motor shaft diameter	mm 4	4		4	3	3	4	3	3	3	3	3
Order Number	166157	166160		166166	166171	166176	166181	166186	166189	166194	166199	166204
1 Reduction	5.8 : 1	21 : 1		79 : 1	132 : 1	318 : 1	589 : 1	1093 : 1	1526 : 1	2362 : 1	3389 : 1	6285 : 1
2 Reduction absolute	23/4	299/14		3887/49	3312/25	389376/1225	20631/35	279841/256	9345024/6125	2066688/875	474513/140	6436343/1024
3 Max. motor shaft diameter	mm 3	3		3	3	4	3	3	4	3	3	3
Order Number		166161		166167	166172	166177	166182		166190	166195	166200	
1 Reduction		23 : 1		86 : 1	159 : 1	411 : 1	636 : 1		1694 : 1	2548 : 1	3656 : 1	
2 Reduction absolute		576/25		14976/175	1587/10	359424/875	79488/125		1162213/686	7962624/3125	457056/125	
3 Max. motor shaft diameter	mm	4		4	3	4	3		3	4	3	
Order Number		166162		166168	166173	166178	166183		166191	166196	166201	
1 Reduction		28 : 1		103 : 1	190 : 1	456 : 1	706 : 1		1828 : 1	2623 : 1	4060 : 1	
2 Reduction absolute		138/5		3588/35	12167/64	89401/196	158171/224		2238912/1225	2056223/784	3637933/896	
3 Max. motor shaft diameter	mm	3		3	3	3	3		3	3	3	
4 Number of stages		1	2	2	3	3	4	4	4	5	5	5
5 Max. continuous torque	Nm	0.75	2.25	2.25	4.50	4.50	4.50	4.50	4.50	4.50	4.50	4.50
6 Intermittently permissible torque at gear output	Nm	1.1	3.4	3.4	6.5	6.5	6.5	6.5	6.5	6.5	6.5	6.5
7 Max. efficiency	%	80	75	75	70	70	60	60	60	50	50	50
8 Weight	g	118	162	162	194	194	226	226	226	258	258	258
9 Average backlash no load	°	0.7	0.8	0.8	1.0	1.0	1.0	1.0	1.0	1.0	1.0	1.0
10 Mass inertia	gcm ²	1.5	0.8	0.8	0.7	0.7	0.7	0.7	0.7	0.7	0.7	0.7
11 Gearhead length L1*	mm	26.4	36.3	36.3	43.0	43.0	49.7	49.7	49.7	56.4	56.4	56.4

* for EC 32 flat L1 is + 2.0 mm



maxon Modular System														
+ Motor	Page	+ Sensor / Brake	Page	Overall length [mm] = Motor length + gearhead length + (sensor / brake) + assembly parts										
RE 30, 60 W	80			94.5	104.4	104.4	111.1	111.1	117.8	117.8	117.8	124.5	124.5	124.5
RE 30, 60 W	80	MR	265	105.9	115.8	115.8	122.5	122.5	129.2	129.2	129.2	135.9	135.9	135.9
RE 35, 90 W	81			97.4	107.3	107.3	114.0	114.0	120.7	120.7	120.7	127.4	127.4	127.4
RE 35, 90 W	81	MR	265	108.8	118.7	118.7	125.4	125.4	132.1	132.1	132.1	138.8	138.8	138.8
RE 35, 90 W	81	HED_ 5540	268/270	118.4	128.3	128.3	135.0	135.0	141.7	141.7	141.7	148.4	148.4	148.4
RE 35, 90 W	81	DCT 22	277	115.5	125.4	125.4	132.1	132.1	138.8	138.8	138.8	145.5	145.5	145.5
RE 35, 90 W	81	AB 28	316	133.5	143.4	143.4	150.1	150.1	156.8	156.8	156.8	163.5	163.5	163.5
RE 35, 90 W	81	HEDS 5540 / AB 28	268/316	150.6	160.5	160.5	167.2	167.2	173.9	173.9	173.9	180.6	180.6	180.6
A-max 32	113/115			89.4	99.3	99.3	106.0	106.0	112.7	112.7	112.7	119.4	119.4	119.4
A-max 32	114/116			88.0	97.9	97.9	104.6	104.6	111.3	111.3	111.3	118.0	118.0	118.0
A-max 32	114/116	MR	265	99.2	109.1	109.1	115.8	115.8	122.5	122.5	122.5	129.2	129.2	129.2
A-max 32	114/116	HED_ 5540	268/270	108.8	118.7	118.7	125.4	125.4	132.1	132.1	132.1	138.8	138.8	138.8
EC 32, 80 W	156			86.5	96.4	96.4	103.1	103.1	109.8	109.8	109.8	116.5	116.5	116.5
EC 32, 80 W	156	HED_ 5540	269/271	104.9	114.8	114.8	121.5	121.5	128.2	128.2	128.2	134.9	134.9	134.9
EC 32, 80 W	156	Res 26	278	106.6	116.5	116.5	123.2	123.2	129.9	129.9	129.9	136.6	136.6	136.6
EC 32 flat, 15 W	190			44.4	54.3	54.3	61.0	61.0	67.7	67.7	67.7	74.4	74.4	74.4
EC 32 flat, IE, IP 00	191			54.5	64.4	64.4	71.1	71.1	77.8	77.8	77.8	84.5	84.5	84.5
EC 32 flat, IE, IP 40	191			56.2	66.1	66.1	72.8	72.8	79.5	79.5	79.5	86.2	86.2	86.2