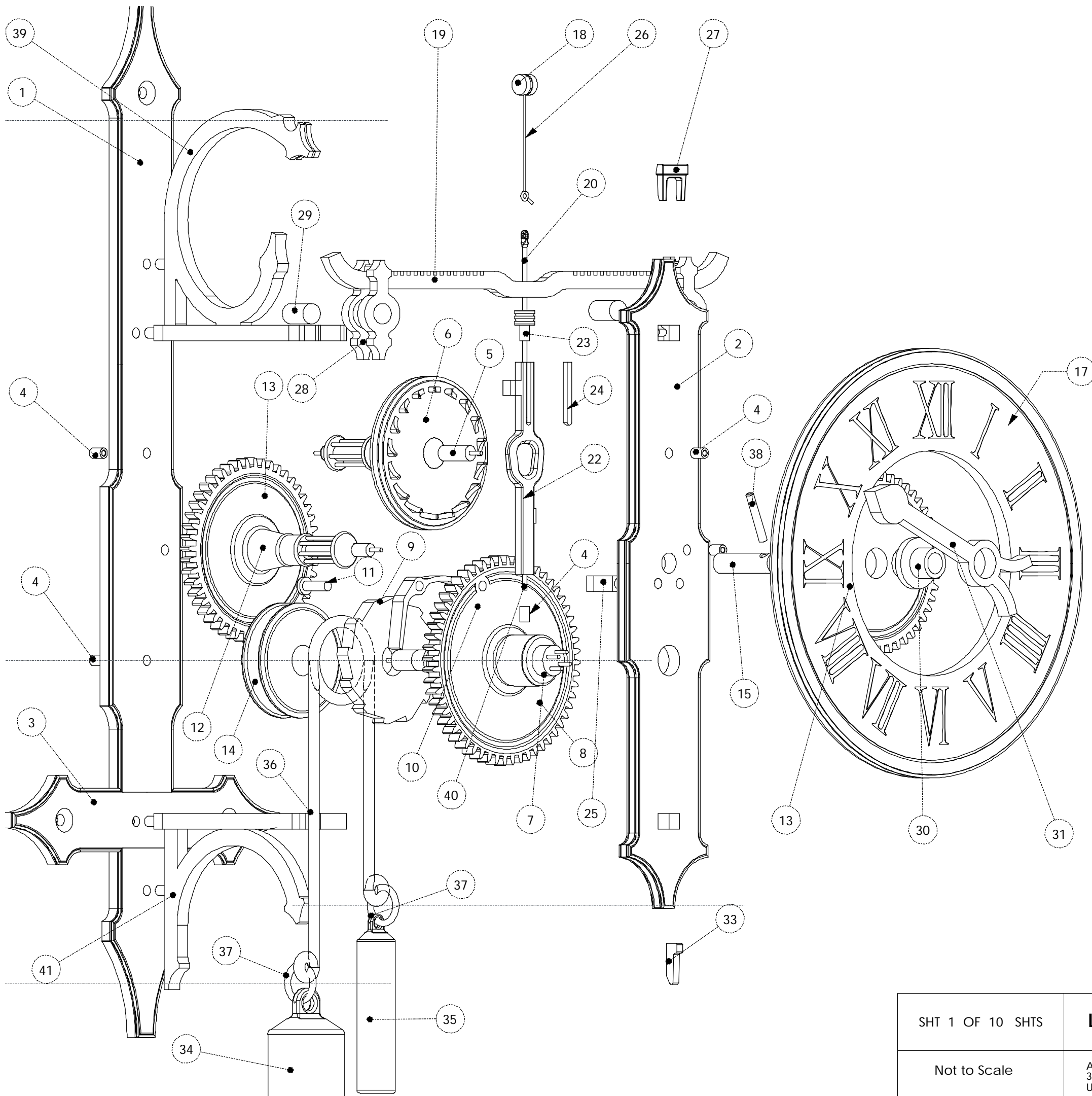


SHT 2 OF 10 SHTS	LAW WOODEN CLOCK 4	Assembly clock 4	
Scale 1:2 UOS	ALL DIMENSIONS IN MM 3rd ANGLE PROJECTION UNTOLERANCED DIMS +/- 0.5	JAN 2002	Designed by: BRLAW www.woodenclocks.co.uk



ITEM NO.	QTY.	PART NO.	DESCRIPTION
1	1	Back	
2	1	Front	
3	1	Cross bar	
4	6	Bush	
5	1	Escapement shaft	
6	1	Escapement wheel Flange with pins	
7	1	Spindle for Gear with 56 teeth	
8	1	Gear with 56 teeth	
9	1	Ratchet	
10	1	Pawl	
11	1	Ratchet pin	
12	1	Spindle for Gear with 48teeth	
13	2	Gear with 48 teeth	
14	1	Cordpulley	
15	1	Peg	
17	1	Clock dial	
18	1	Cord wrap	
19	1	Foliot	
20	1	Hanger	
22	1	Verge	
23	1	Verge bush	
24	1	Vergeinfill	
25	1	Verge support	
26	1	Cord	
27	1	Wedge	
28	2	Foliot weight	
29	2	Foliot weight insert	
30	1	Sleeve for 48T	
31	1	Hand	
33	1	Wedge small	
34	1	Big weight	
35	1	Small weight	
36	1	Rope	
37	2	Ring	
38	1	Pin for hand	
39	1	Top brace	
40	1	pin for verge	
41	1	Bottom brace	

SHT 1 OF 10 SHTS

LAW WOODEN CLOCK 4

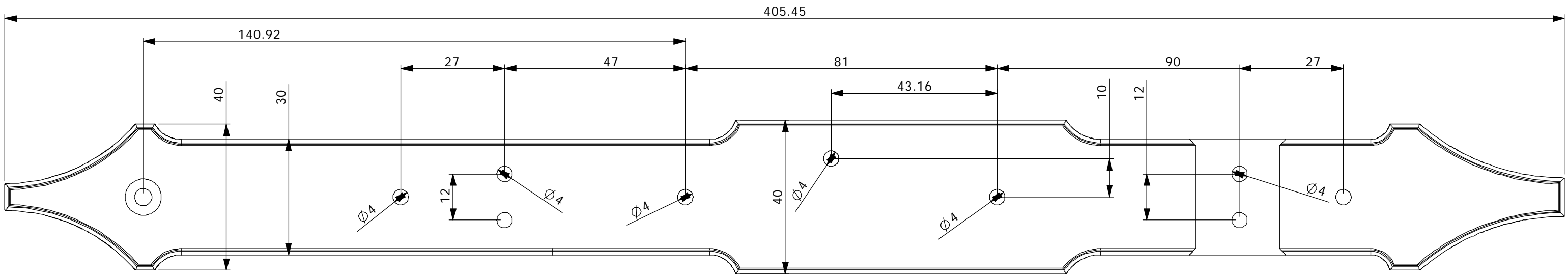
Exploded view

Not to Scale

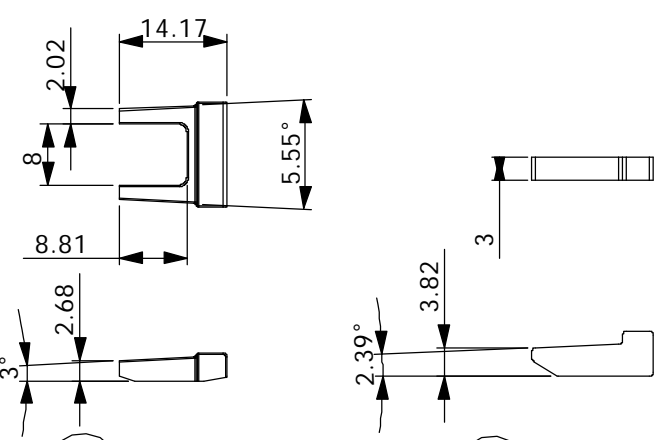
ALL DIMENSIONS IN MM
3rd ANGLE PROJECTION
UNTOLERANCED DIMS +/- 0.5

JAN 2002

Designed by:
BRLAW
www.woodenclocks.co.uk

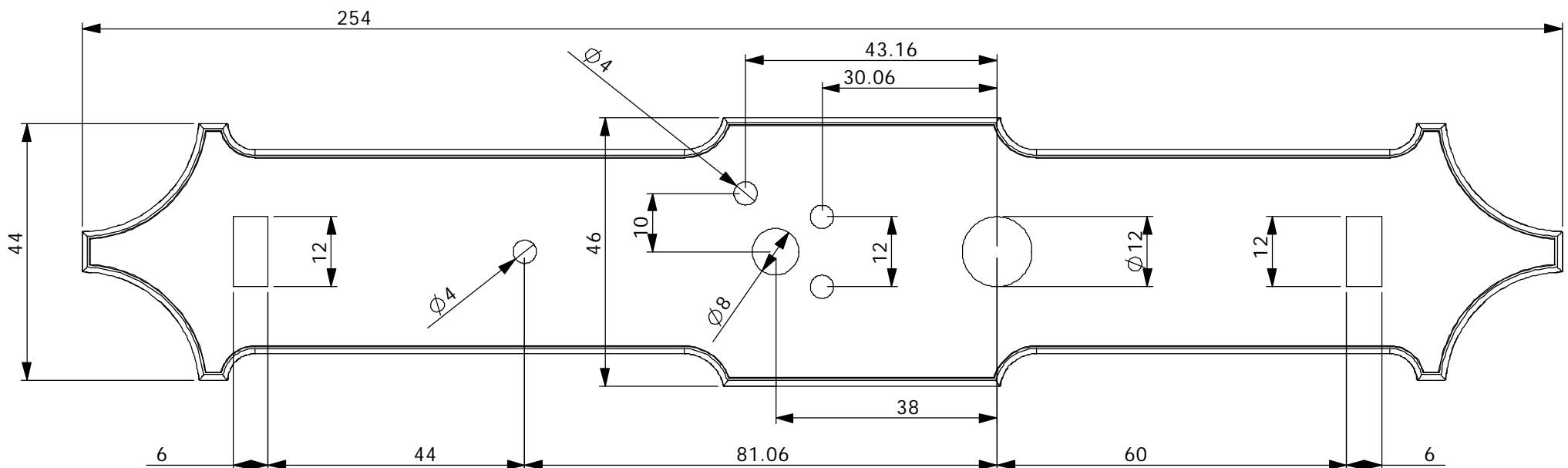


1 Back frame 1-off

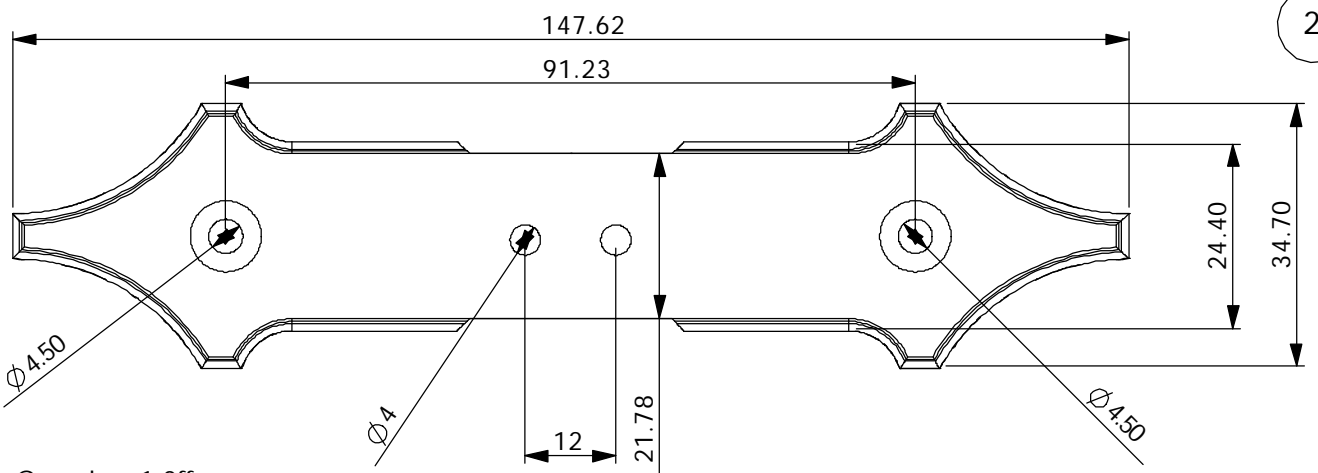


27 Wedge 1-off

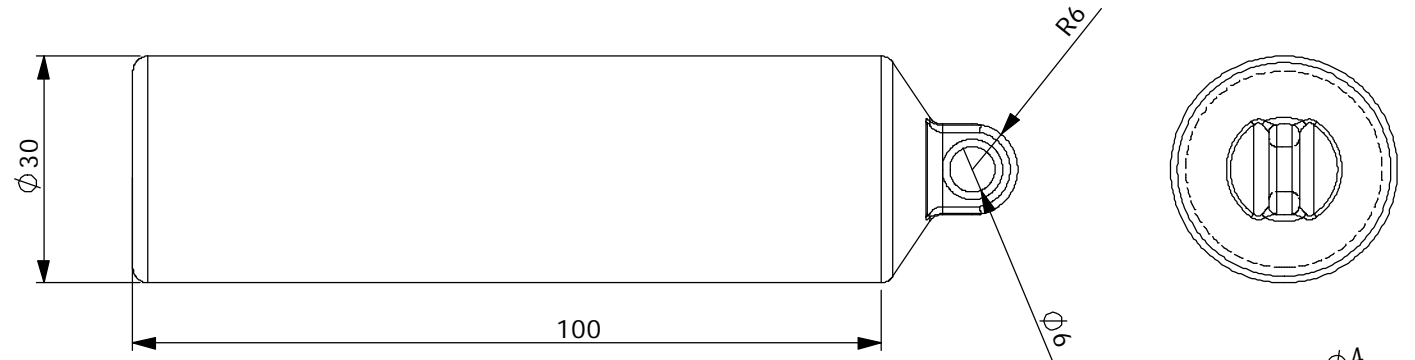
33 Small Wedge 2-off



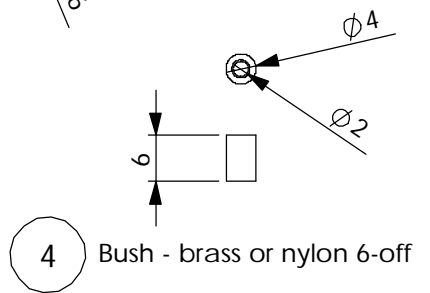
2 Front frame 1-off



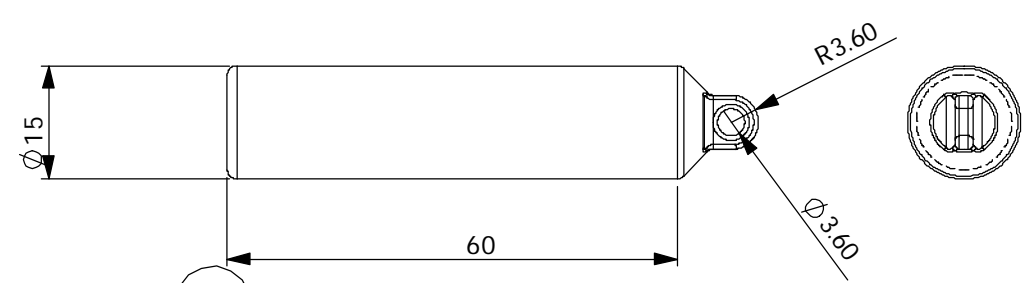
3 Cross bar 1-off



34 Large weight approx 600 gms 1-off

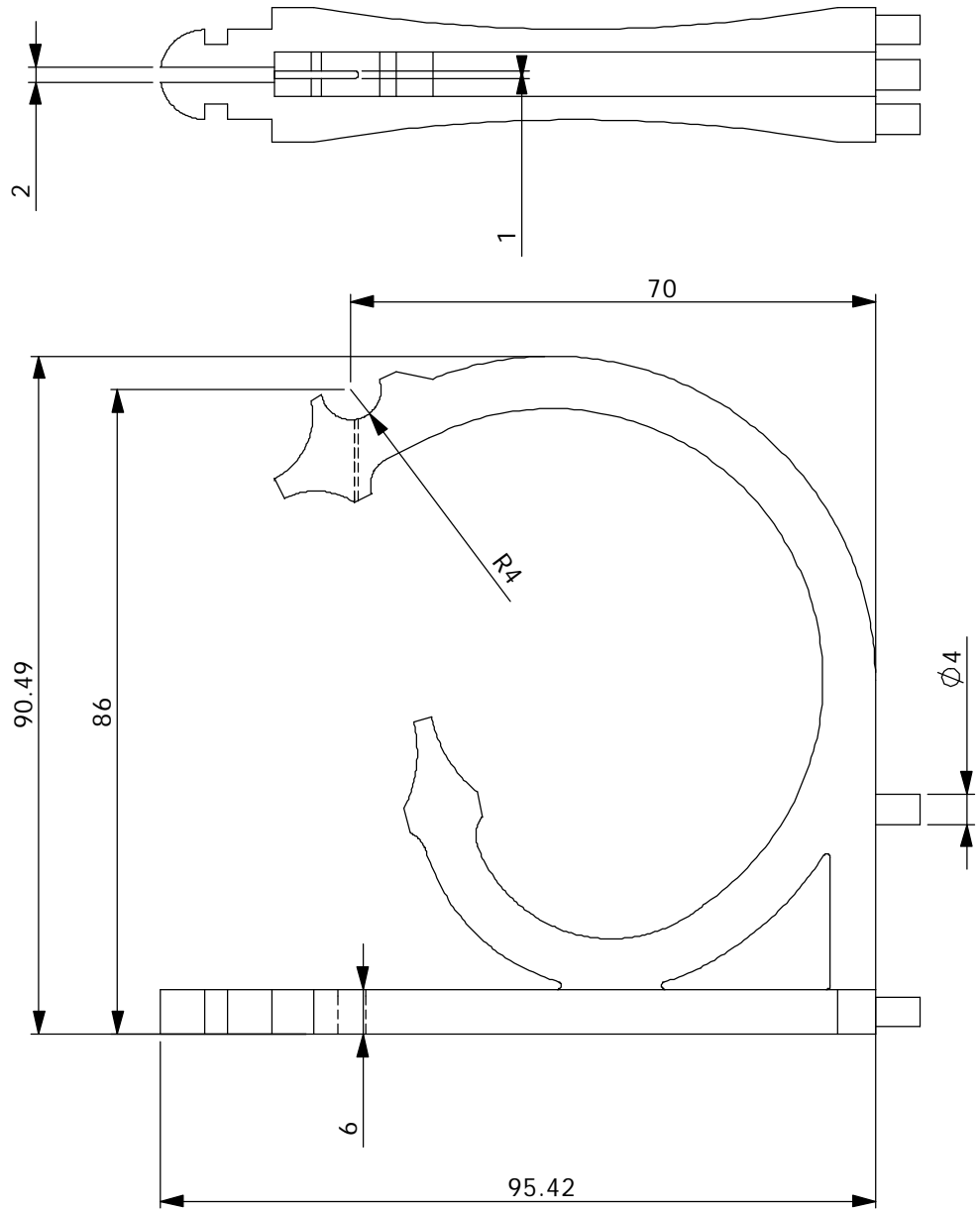


4 Bush - brass or nylon 6-off

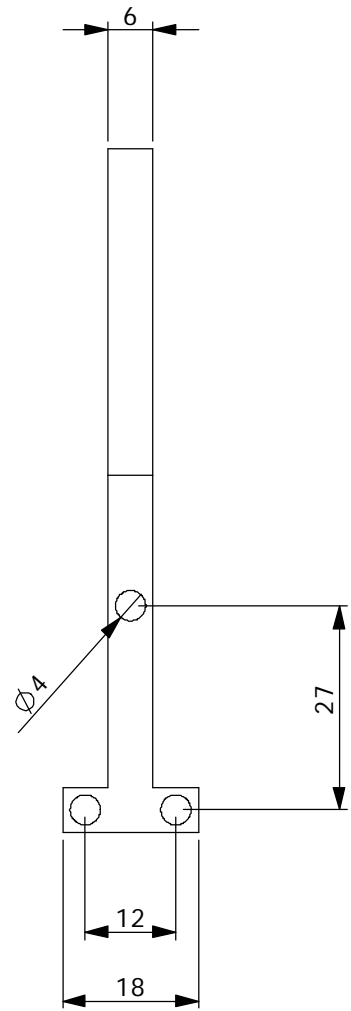


35 Small weight approx 110 gms 1-off

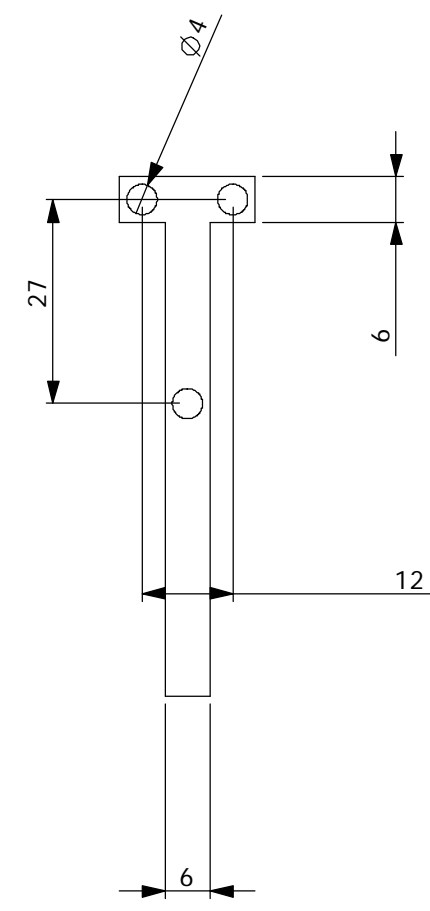
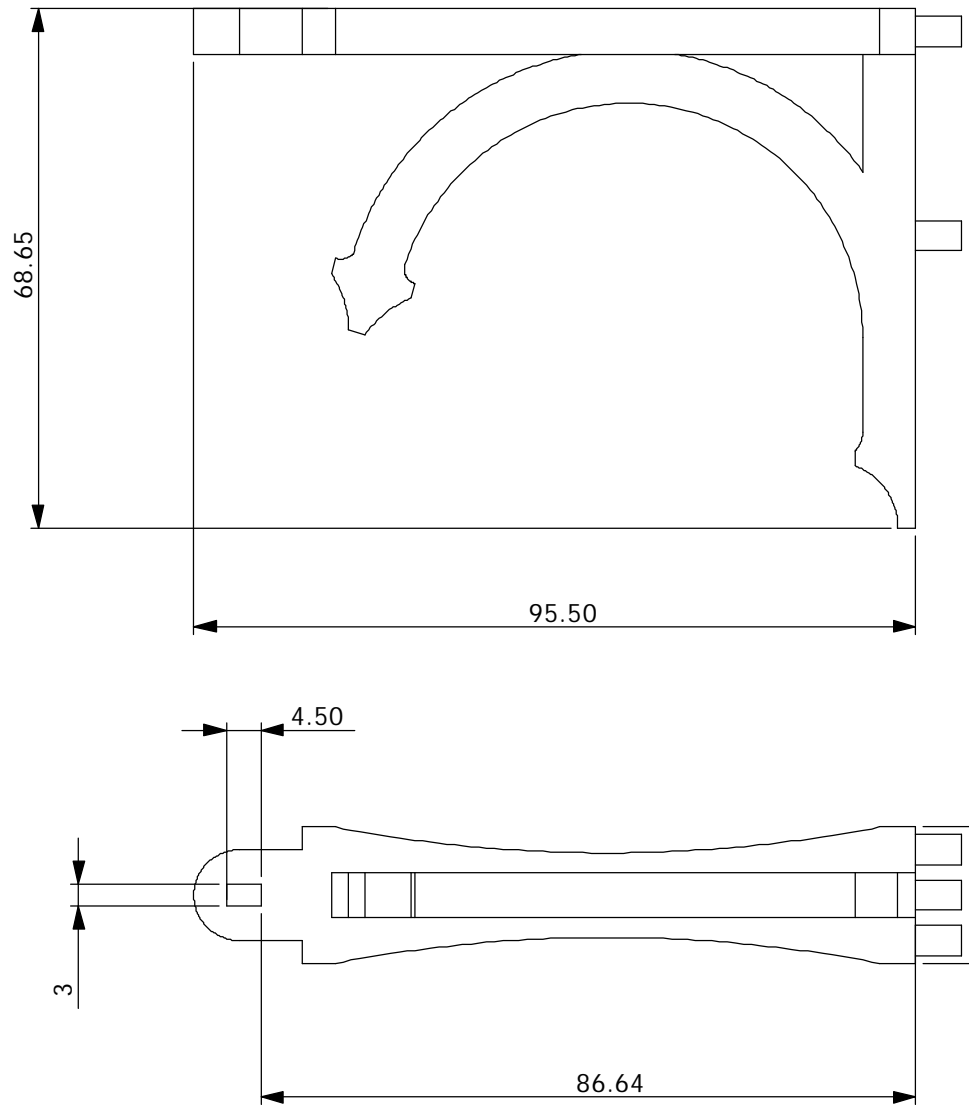
SHT 3 OF 10 SHTS	LAW WOODEN CLOCK 4	Frame details	
Scale 1:1 UOS	ALL DIMENSIONS IN MM 3rd ANGLE PROJECTION UNTOLERANCED DIMS +/- 0.5	JAN 2002	Designed by: BRLAW www.woodenclocks.co.uk



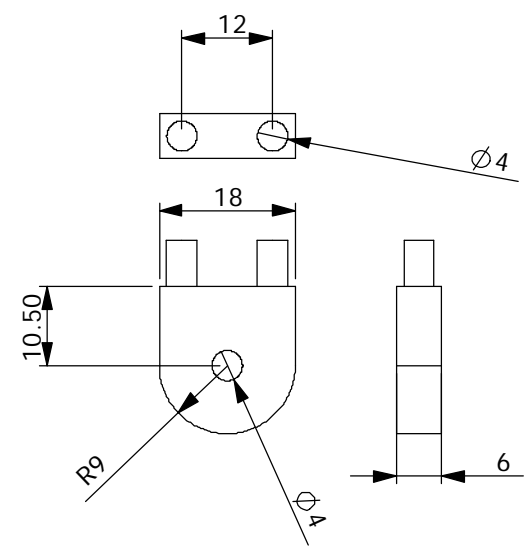
16 Top brace 1-off



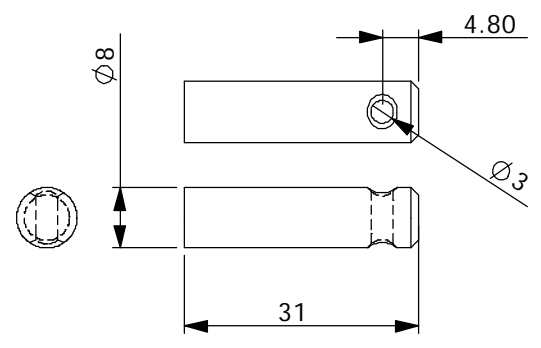
32 Bottom brace 1-off



38 Pin for hand 1-off

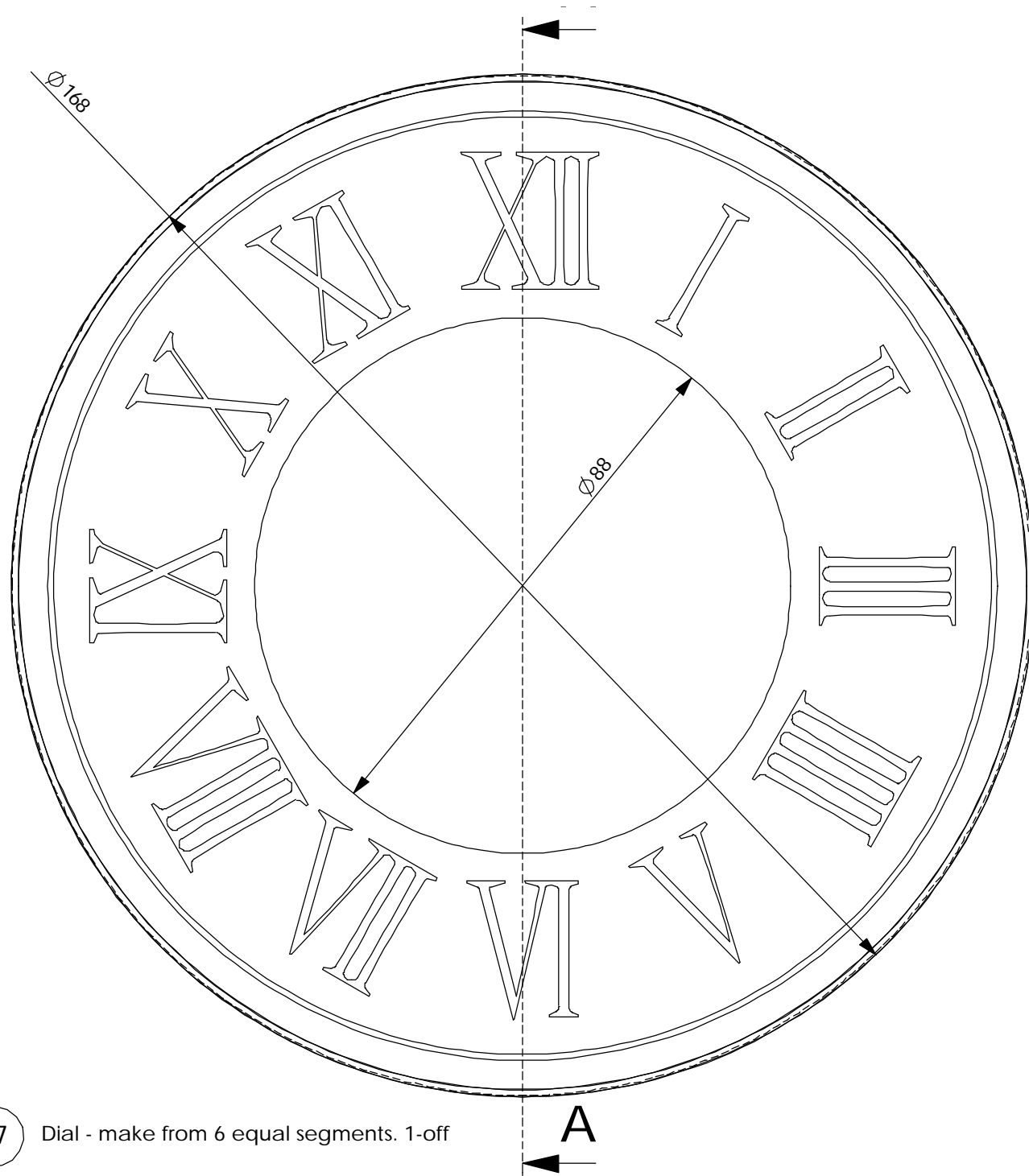


25 Verge support 1-off

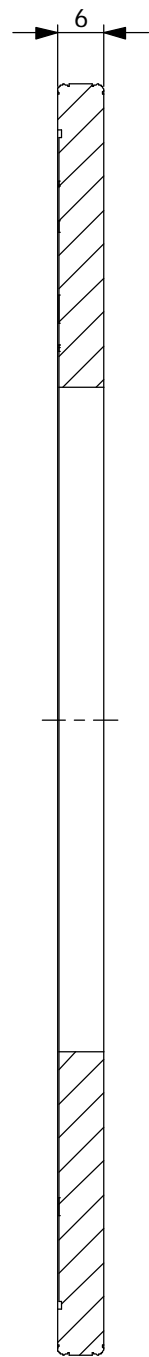


15 Peg 1-off

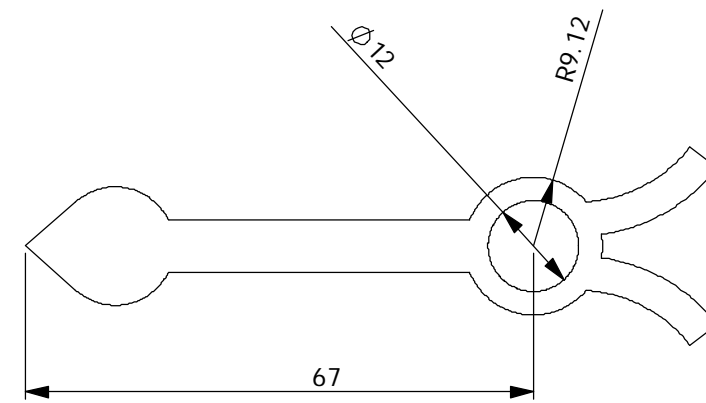
SHT 4 OF 10 SHTS	LAW WOODEN CLOCK 4	Braces	
Scale 1:1 UOS	ALL DIMENSIONS IN MM 3rd ANGLE PROJECTION UNTOLERANCED DIMS +/- 0.5	JAN 2002	Designed by: BRLAW www.woodenclocks.co.uk



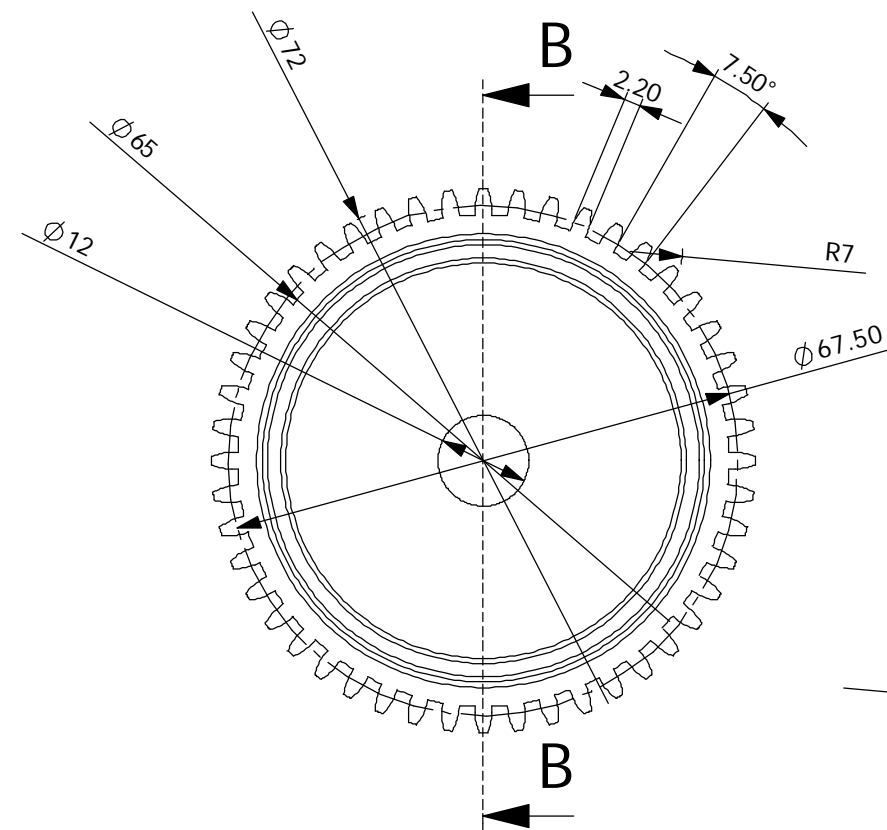
17 Dial - make from 6 equal segments. 1-off



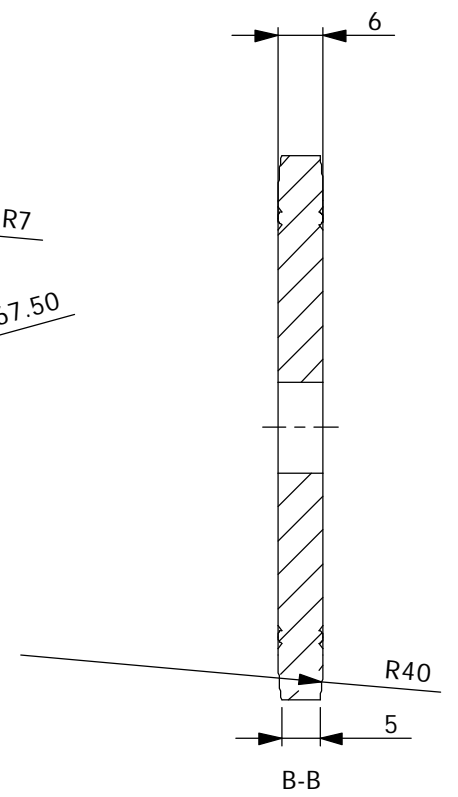
A-A



31 Hand 1-off

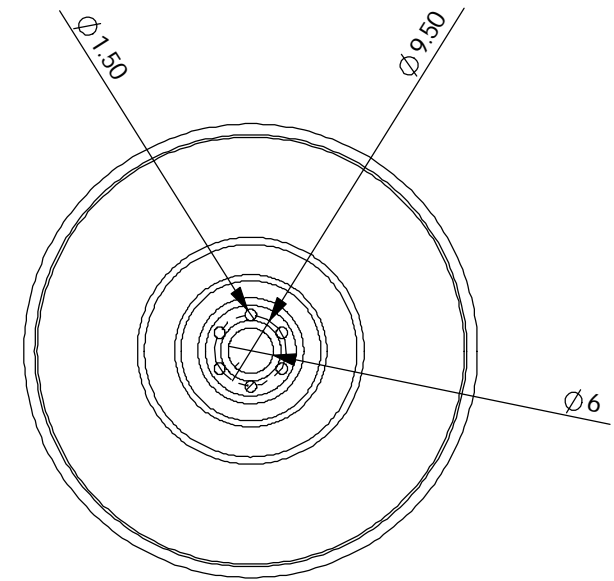
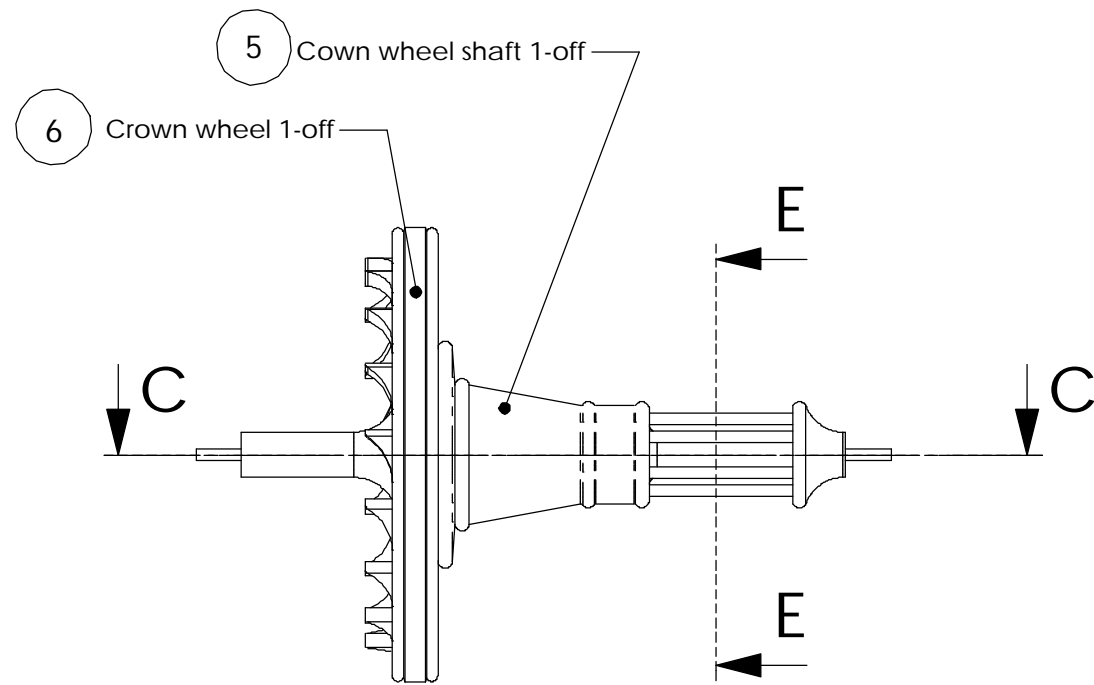
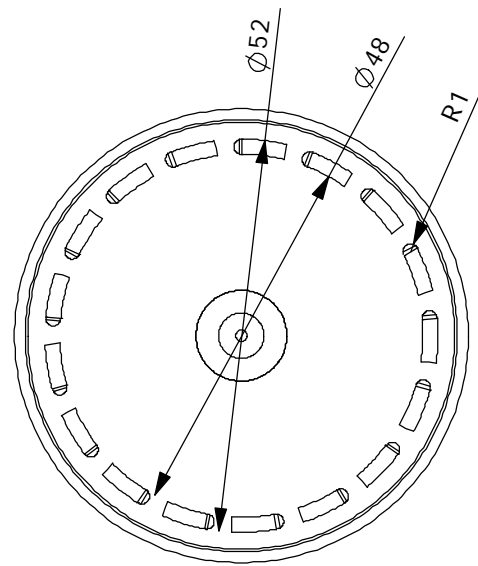


13 Gear with 48 teeth 2-off

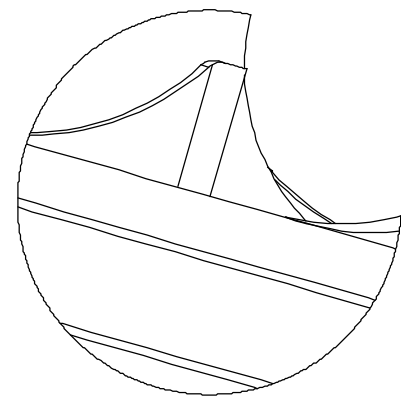


B-B

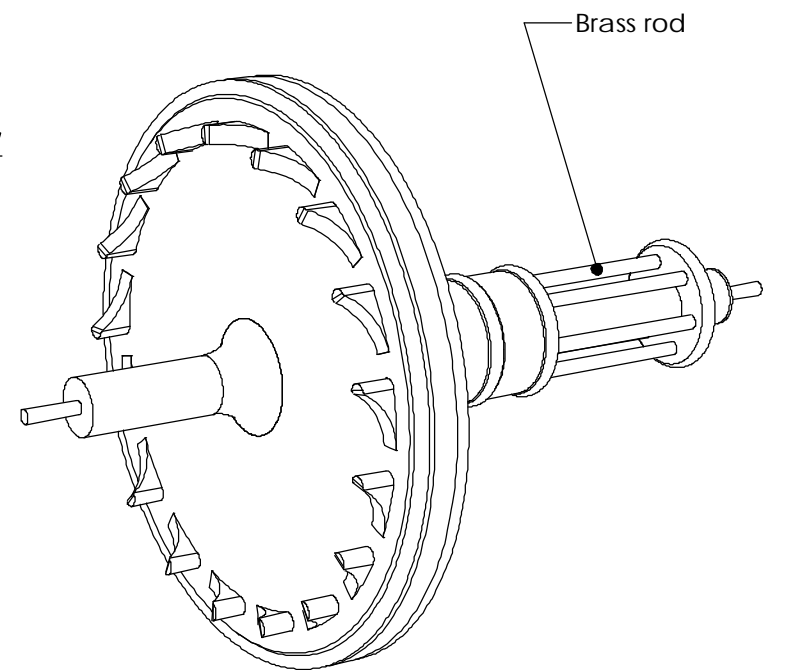
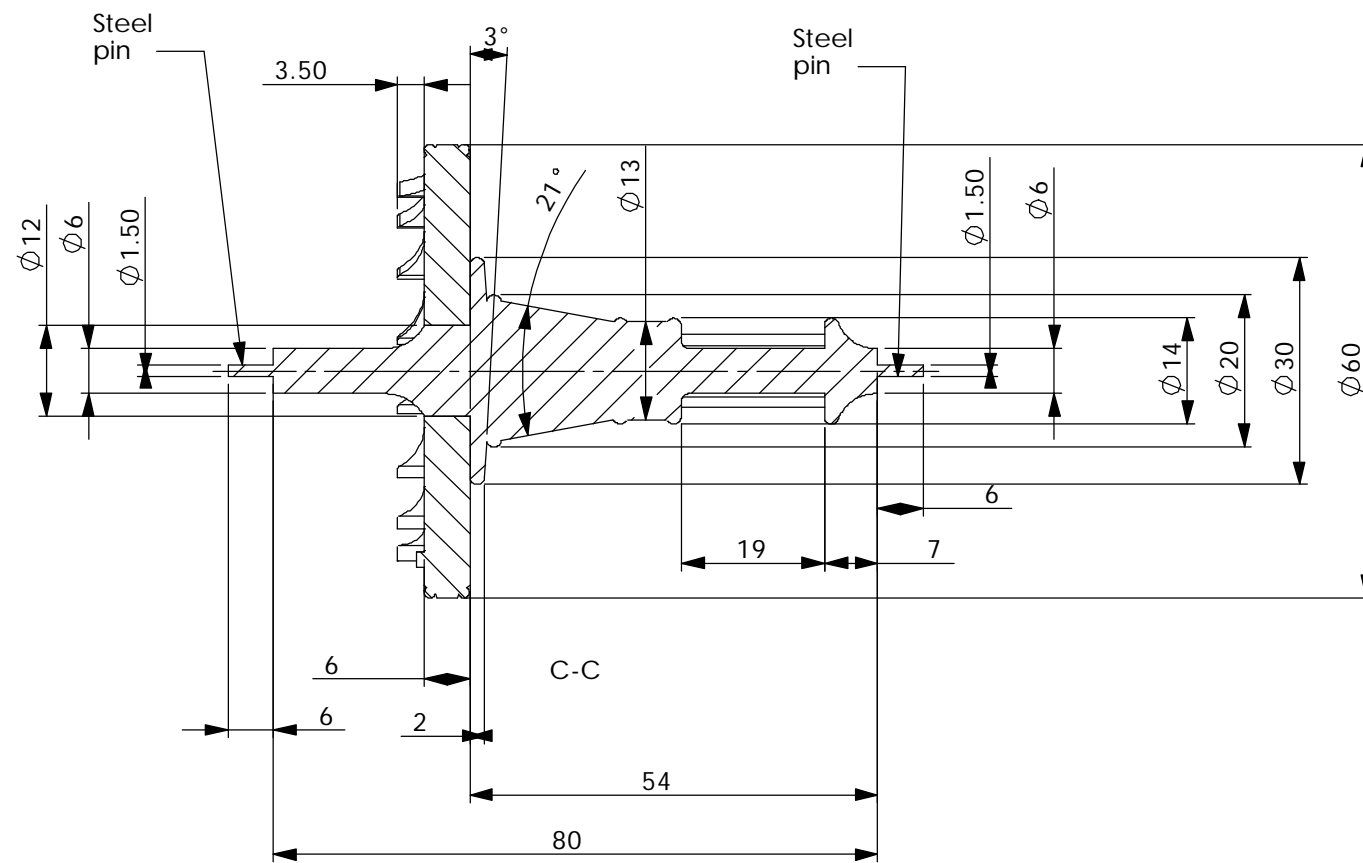
SHT 5 OF 10 SHTS	LAW WOODEN CLOCK 4	Dial	
Scale 1:1 UOS	ALL DIMENSIONS IN MM 3rd ANGLE PROJECTION UNTOLERANCED DIMS +/- 0.5	JAN 2002	Designed by: BRLAW www.woodenclocks.co.uk



E-E

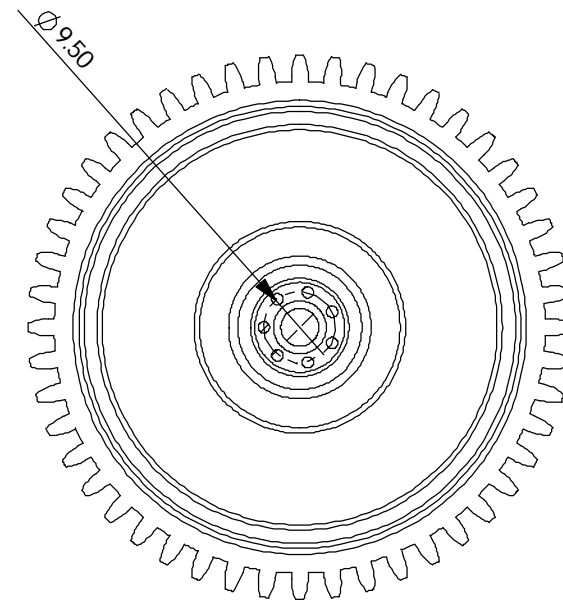
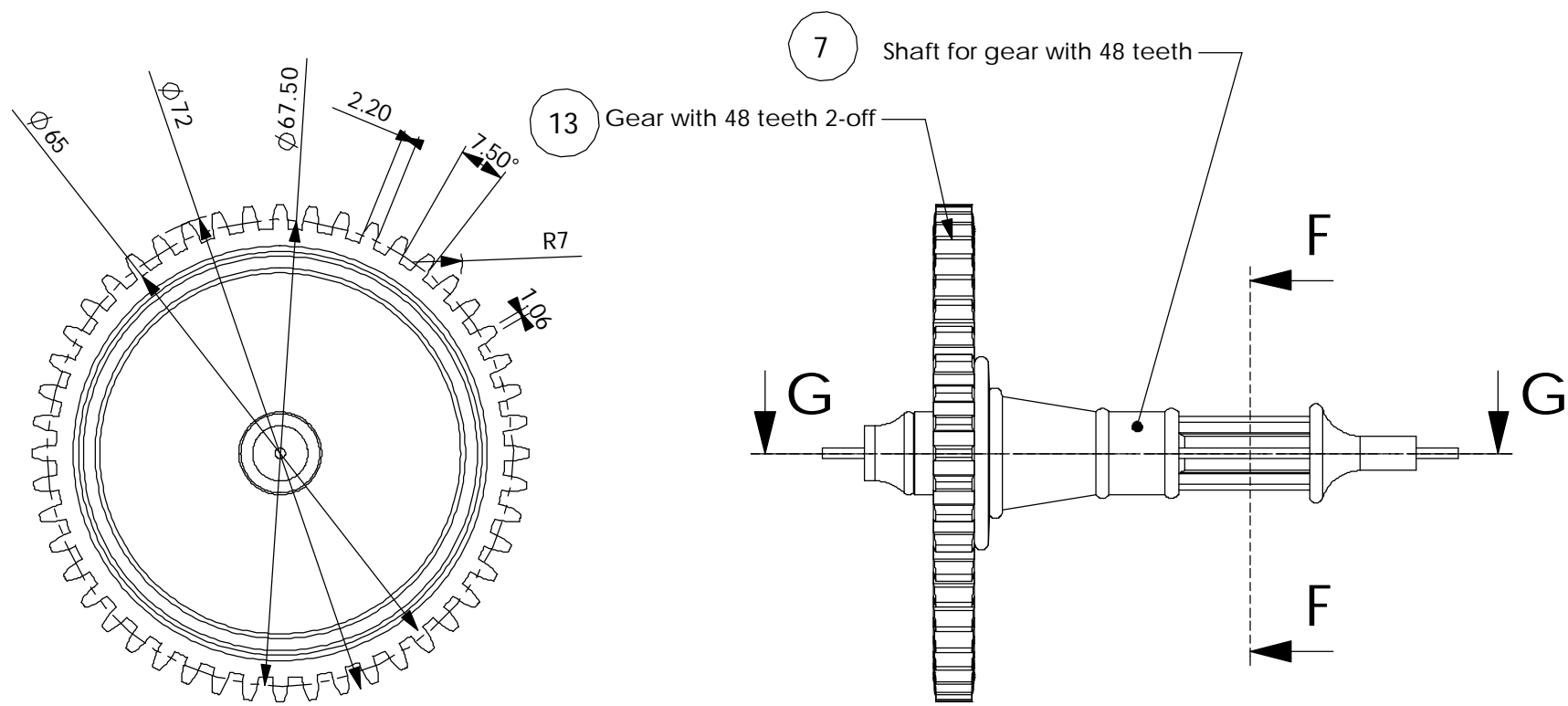


View on N

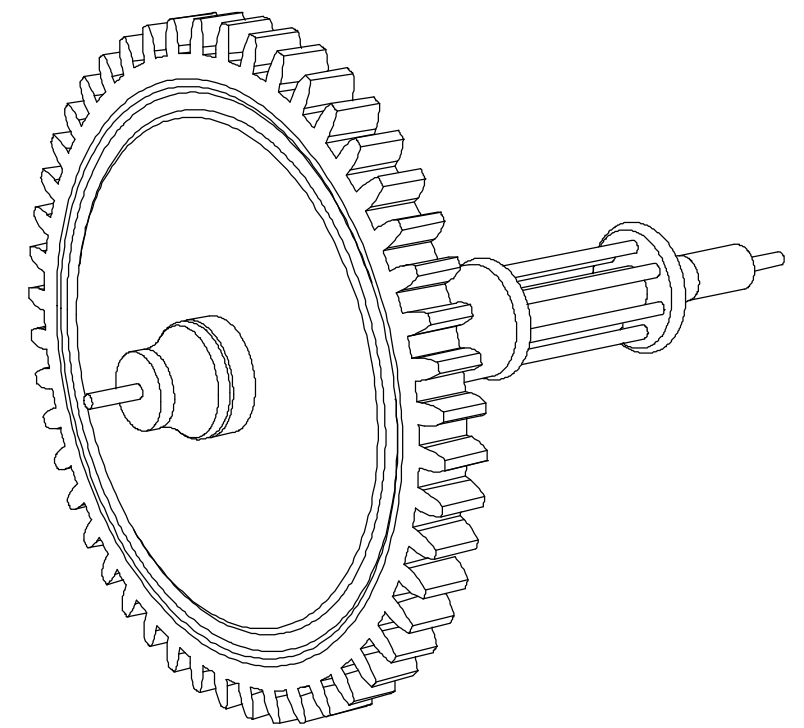
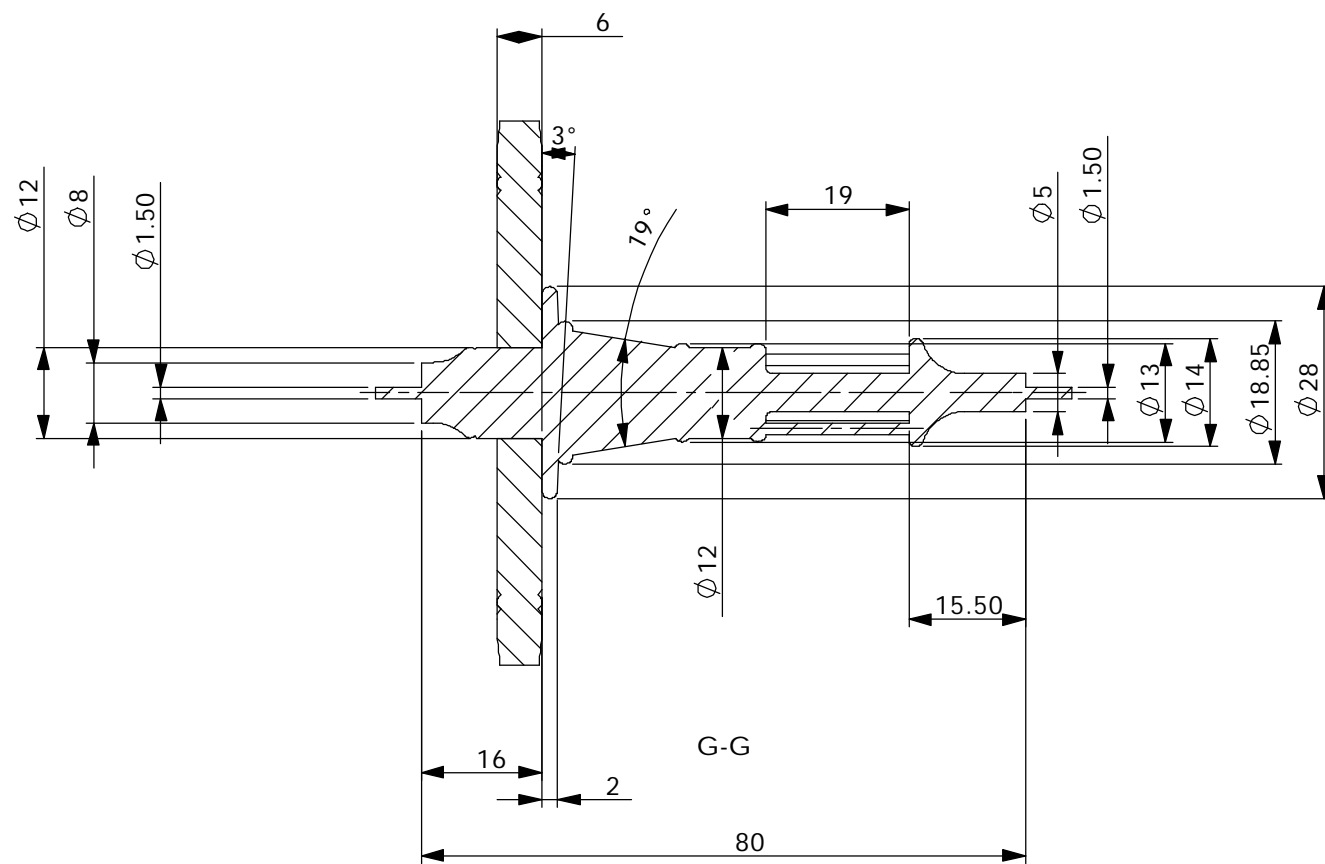


Brass rod

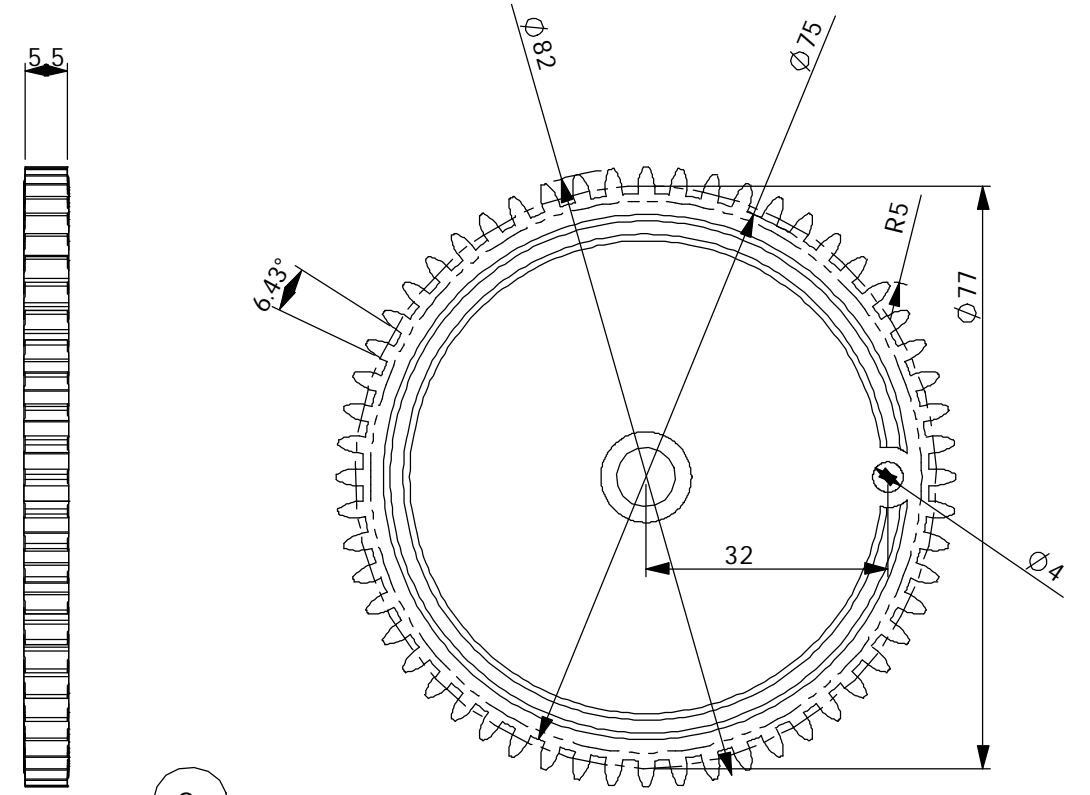
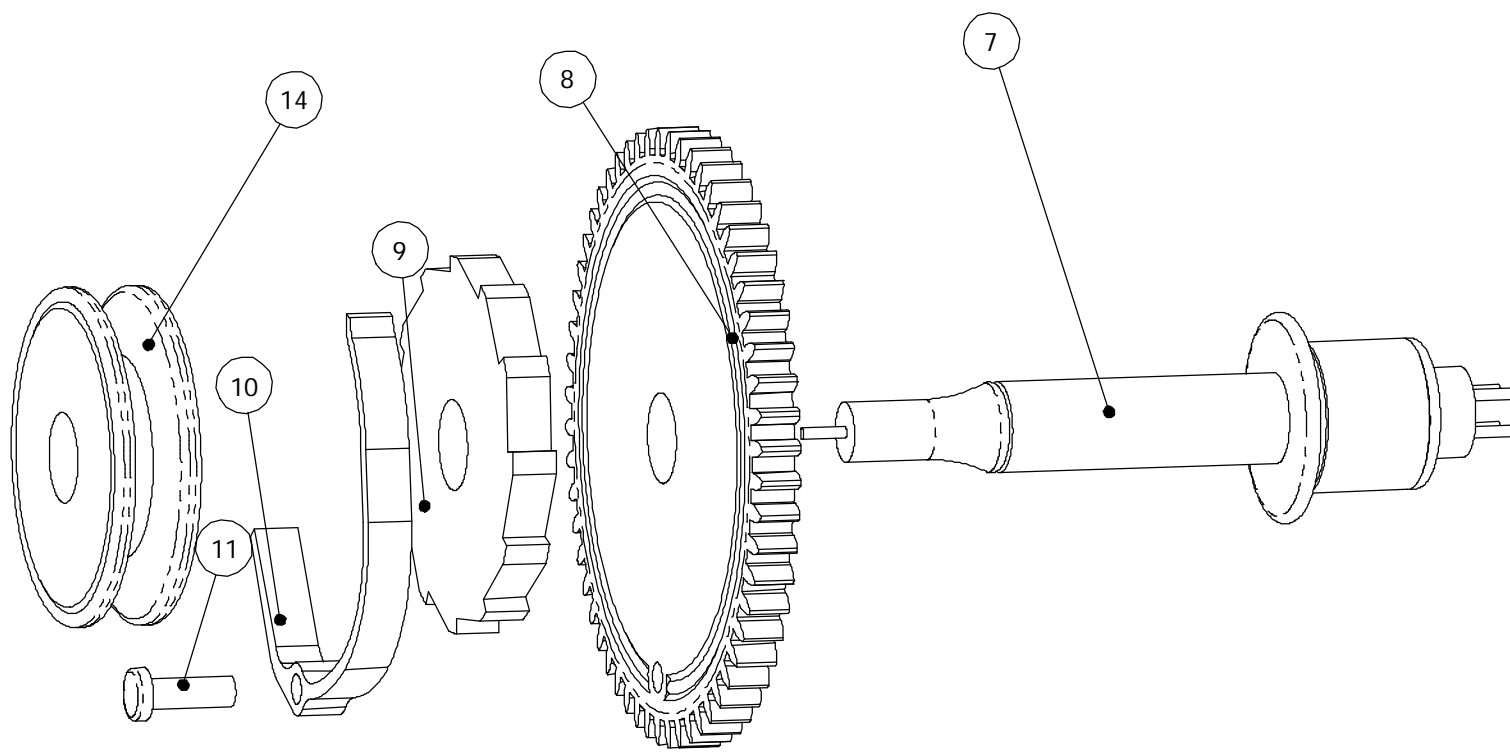
SHT 6 OF 10 SHTS	LAW WOODEN CLOCK 4	Crown wheel	
Scale 1:1 UOS	ALL DIMENSIONS IN MM 3rd ANGLE PROJECTION UNTOLERANCED DIMS +/- 0.5	JAN 2002	Designed by: BRLAW www.woodenclocks.co.uk



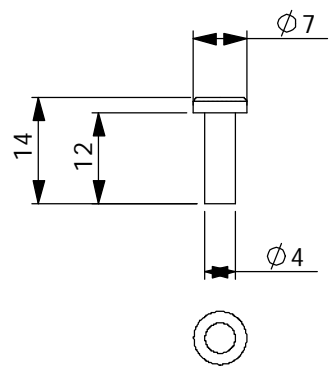
F-F



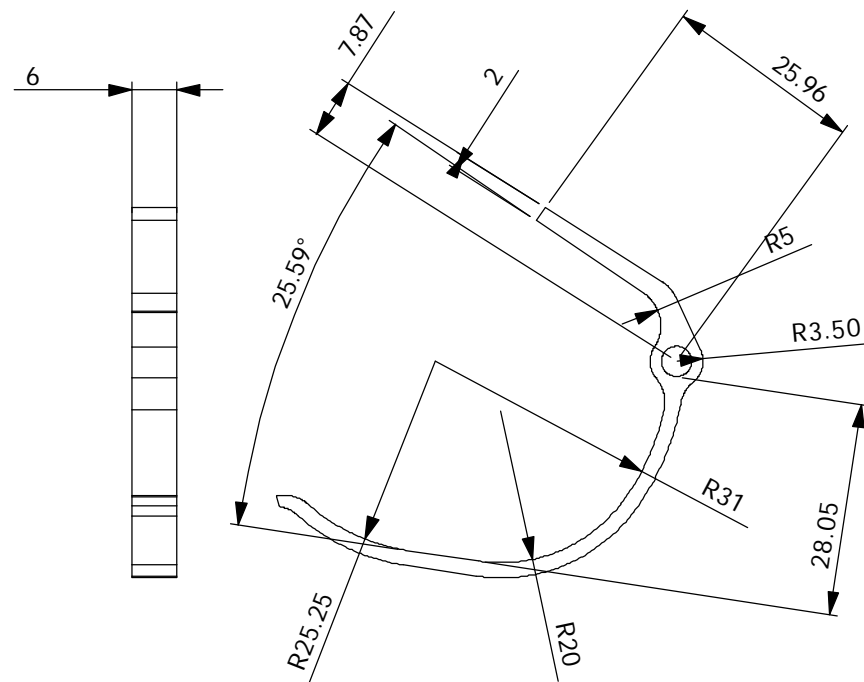
SHT 7 OF 10 SHTS	LAW WOODEN CLOCK 4	Centre wheel	
Scale 1:1 UOS	ALL DIMENSIONS IN MM 3rd ANGLE PROJECTION UNTOLERANCED DIMS +/- 0.5	JAN 2002	Designed by: BRLAW www.woodenclocks.co.uk



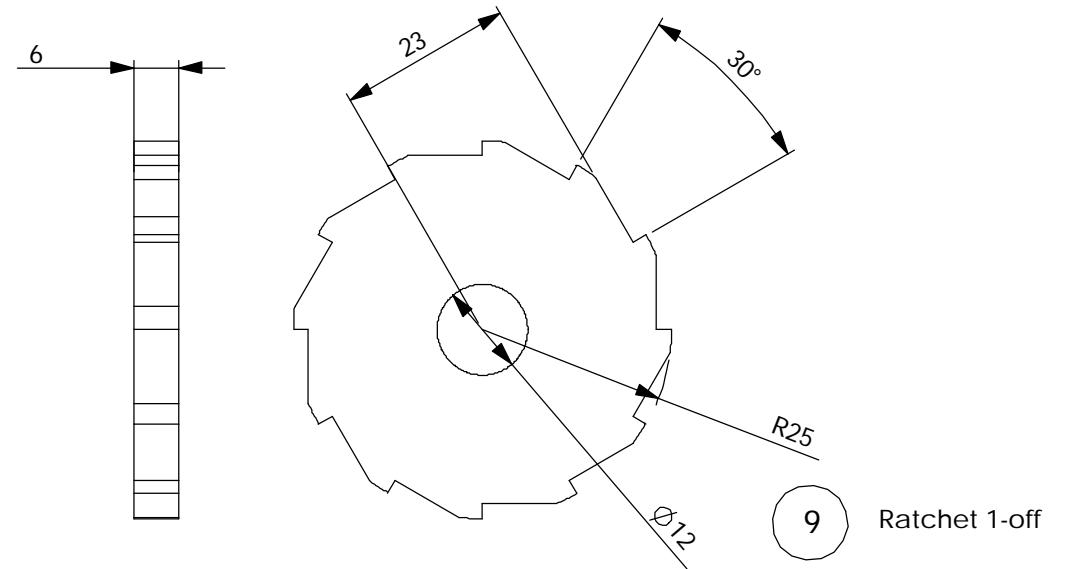
8 Gear with 56 teeth 1-off



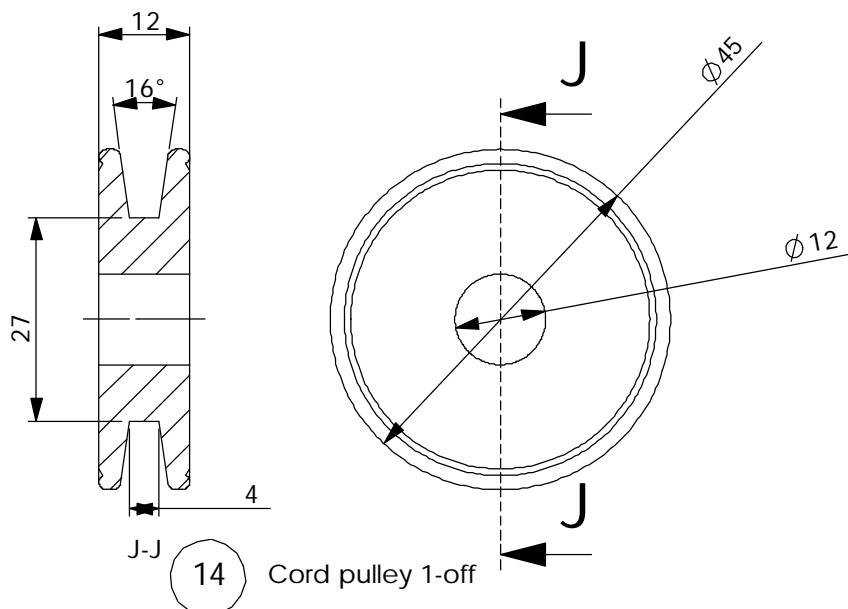
11 Ratchet pin 1-off



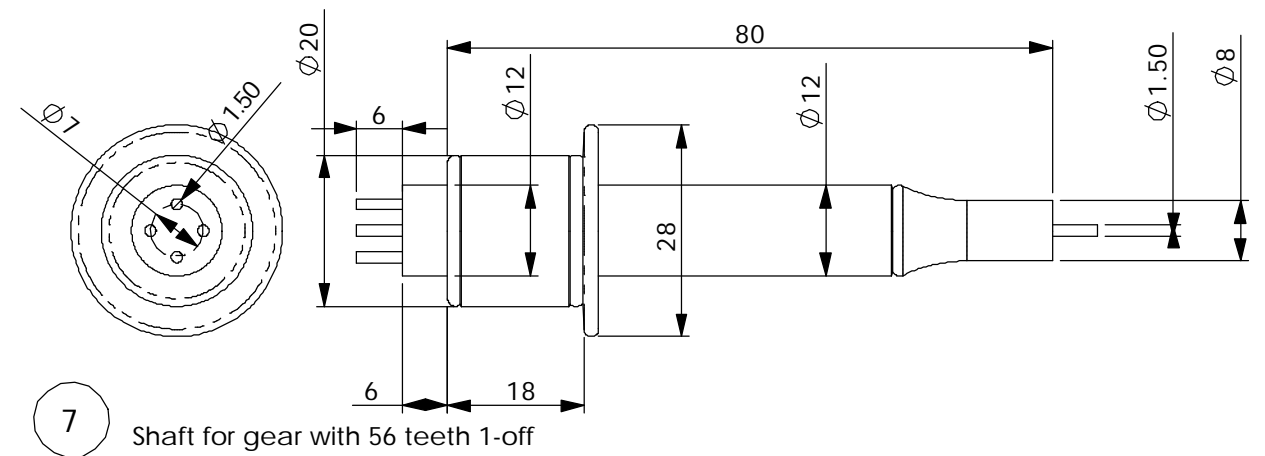
10 Pawl 1-off



9 Ratchet 1-off

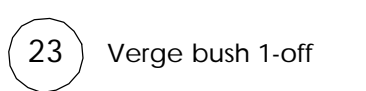
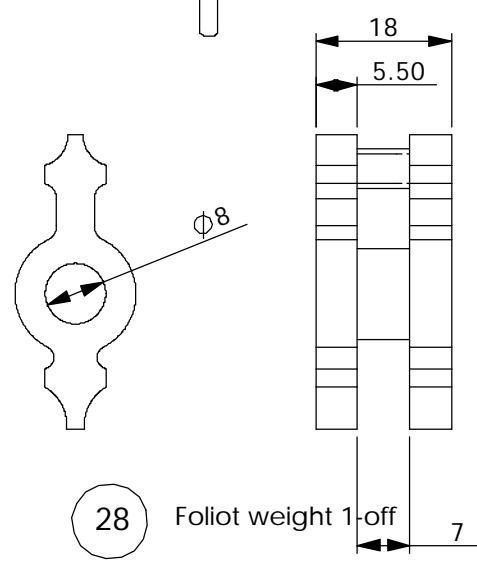
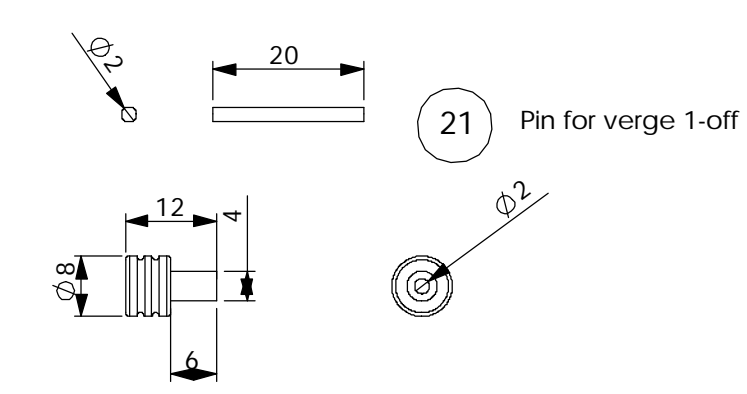
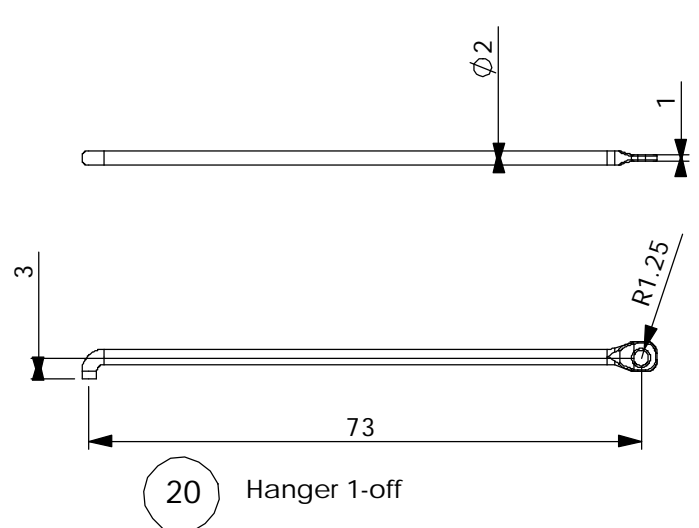
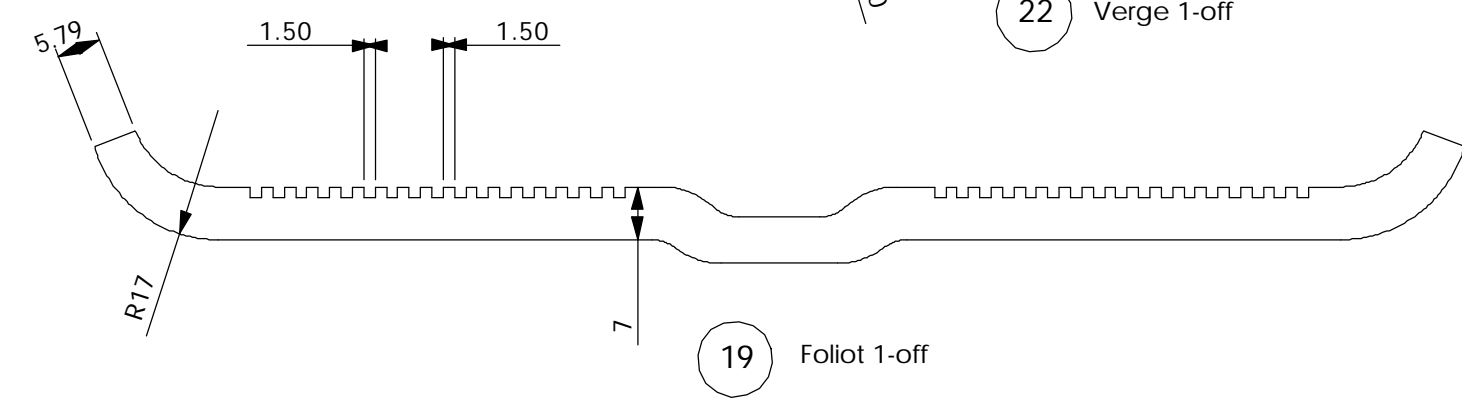
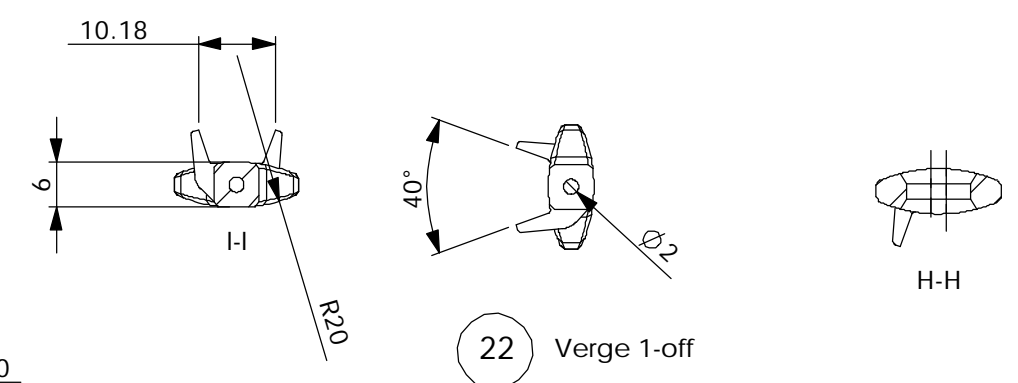
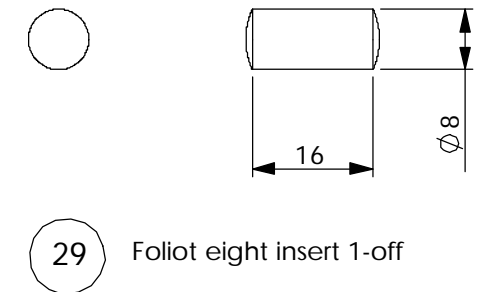
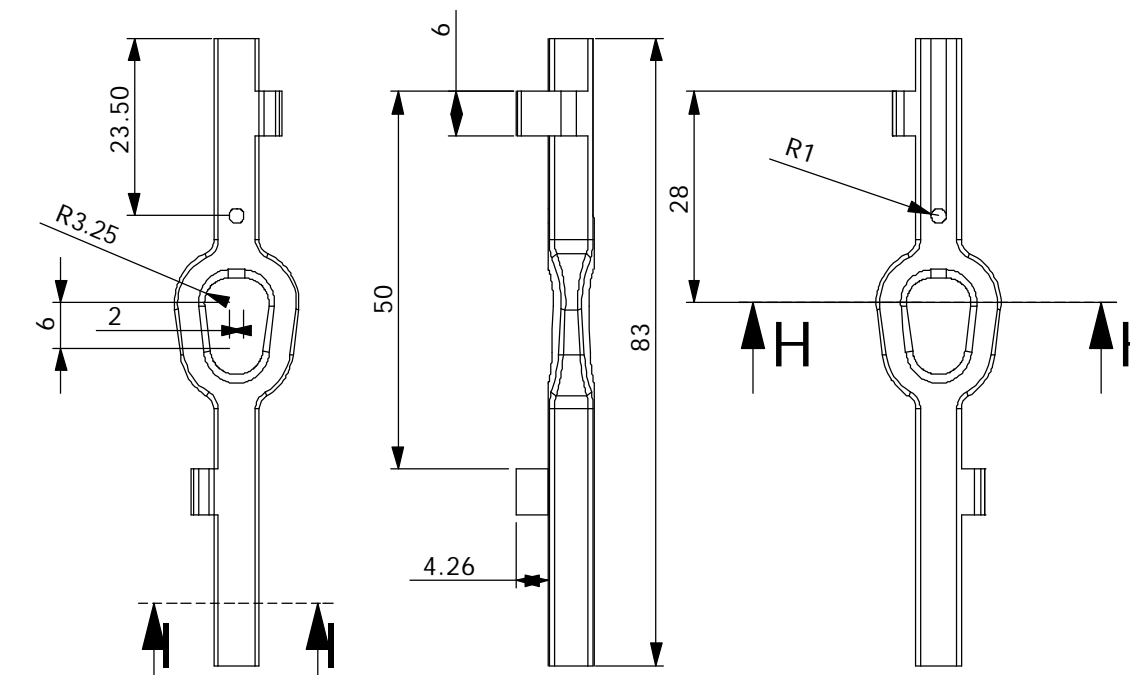
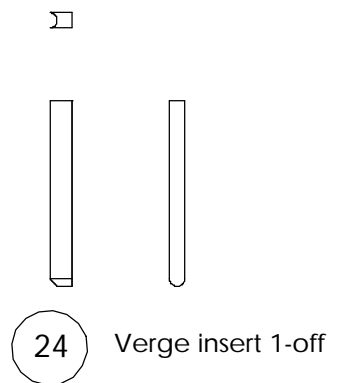
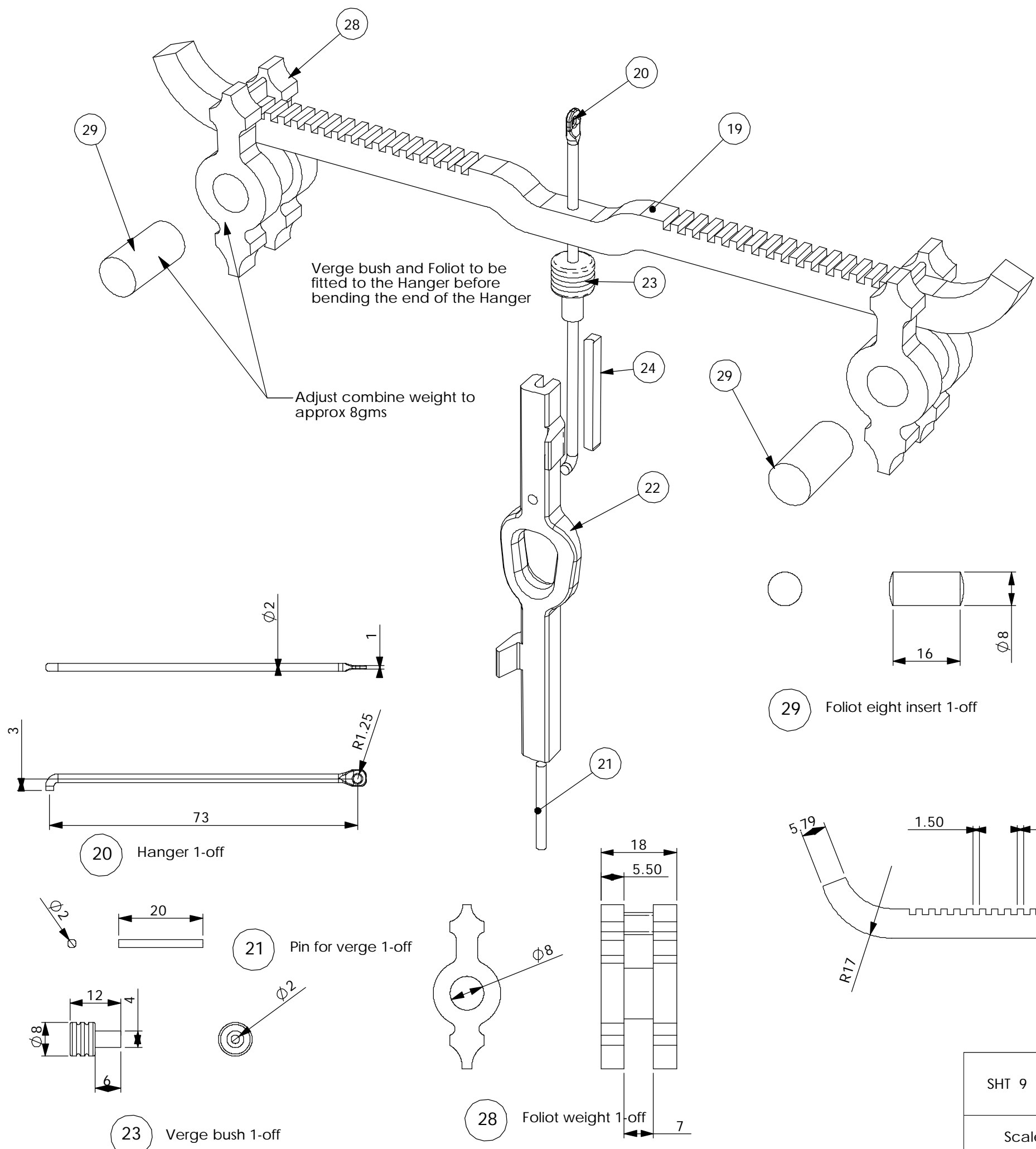


14 Cord pulley 1-off



7 Shaft for gear with 56 teeth 1-off

SHT 8 OF 10 SHTS	LAW WOODEN CLOCK 4	Drive wheel	
Scale 1:1 UOS	ALL DIMENSIONS IN MM 3rd ANGLE PROJECTION UNTOLERANCED DIMS +/- 0.5	JAN 2002	Designed by: BRLAW www.woodenclocks.co.uk

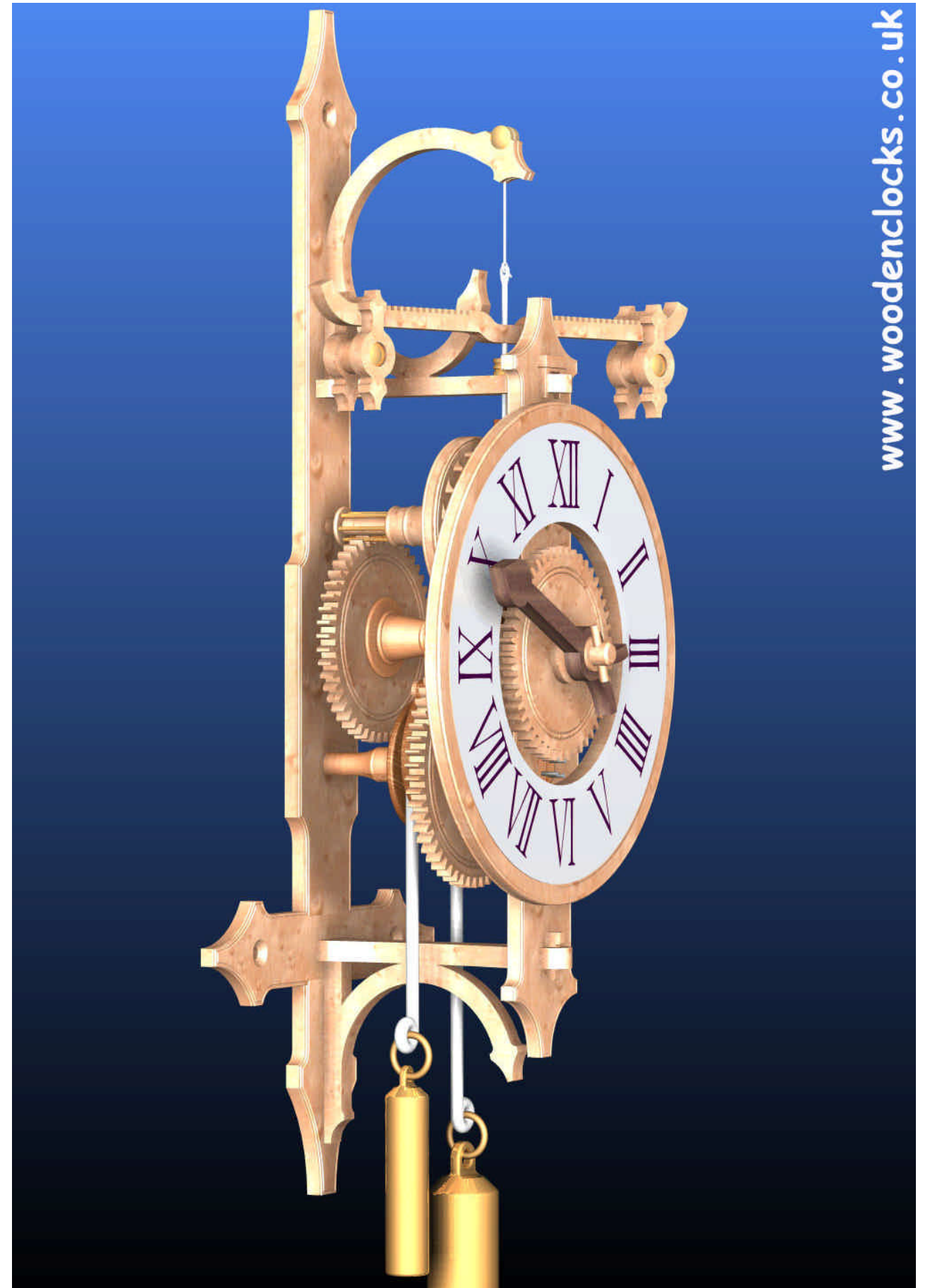


SHT 9 OF 10 SHTS	LAW WOODEN CLOCK 4	Verge	
Scale 1:1 UOS	ALL DIMENSIONS IN MM 3rd ANGLE PROJECTION UNTOLERANCED DIMS +/- 0.5	JAN 2002	Designed by: BRLAW www.woodenclocks.co.uk

Woodenclock Clock 4

Notes

1. Use close-grained timber such as Beech planed down to a thickness of 6 mm for all components unless otherwise stated.
2. Details of the dial numerals are shown for guidance only, the actual form of the numerals is left to your own discretion. They can be applied by painting or as relief numerals cut from thin sheet.
3. The hand is again given for guidance only, although in this instance it is drawn to size so that you can copy it if you wish. It should in any event be cut from thin sheet.
4. Where the components are drawn to 1:1 scale you can attach the drawing to the timber using a low tack adhesive, and cut around the profiles. Great care should be taken with this approach when cutting the gear teeth because they need to be cut very accurately to avoid problems when assembling the clock
5. The frame components i.e. Back, Cross bar, Top and Bottom braces should be glued together. The front, verge, and Dial should also be glued.
6. The clock is adjusted for accuracy by moving the Foliot weights in or out along Foliot until the best accuracy is achieved. Please note that the clock will never be more accurate than 1 hour per day.
7. The pitch of the gears is controlled by the drilling of the hole centres in the front and back frames. It may help to delay the drilling of these holes in the frames until after the gears are first cut and then finished to size. At this point it would help to mount them on two separate pieces of wood and test their free movement one to the other and measure the centre distance between them, so that the hole centres can be drilled at this dimension rather than the theoretical dimension on the drawing.
8. The profiling of the larger gears is not necessary to the functioning of the clock, and can be carried out at the discretion of the clock builder.
9. The verge construction has the Hanger formed with a bent end so as to secure it into the Verge in the correct position, because of this the Verge bush and the Foliot have to be fitted to the Hanger before it is bent. An alternative to this is to dispense with the bend altogether and simply drill a hole in the top of the Verge for the Hanger to fit in, and then pin the Verge and the Foliot in the correct positions. Dimensions are given for this on sheet 2. This also saves having to make and fit the verge in-fill piece.
10. The Verge assembly is fitted after the gears have been located on the back frame. It is fitted by lifting the verge bush and sliding the



SHT 10 OF 10 SHTS	LAW WOODEN CLOCK 4	Notes	
Scale 1:1 UOS	ALL DIMENSIONS IN MM 3rd ANGLE PROJECTION UNTOLERANCED DIMS +/- 0.5	JAN 2002	Designed by: BRLAW www.woodenclocks.co.uk